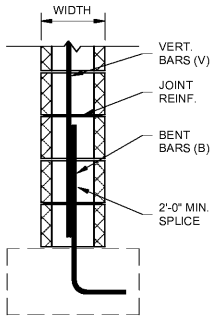


Mark	Width	Reinforcing
MFW8	8"	#5 @ 48" o.c. (V) - #5 @ 24" o.c. (B)
MFW10	10"	#5 @ 48" o.c. (V) - #5 @ 24" o.c. (B)



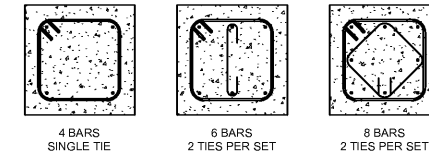
- NOTES:
- GROUT ALL CORES SOLID BELOW GRADE w/ 3,000 psi CONCRETE GROUT.
  - REINFORCING SHALL BE CENTERED IN WALL U.N.O.
  - PROVIDE HORIZONTAL JOINT REINFORCING PER SPECIFICATIONS - SPACING NOT TO EXCEED 16" o.c.
  - WALLS WITH MULTIPLE WYTHES SHALL HAVE (1) LAYER OF REINFORCING PER WYTHE

**Masonry Foundation Wall Schedule**

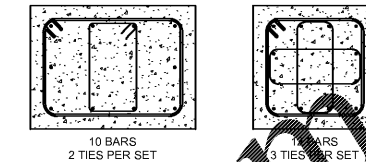
SCALE: 3/4" = 1'-0"

Mark	Width	Length	Thick.	Reinf.
F3.0	3'-0"	3'-0"	1'-0"	3 #5 (E.W.)
F4.0	4'-0"	4'-0"	1'-0"	4 #5 (E.W.)
F6.0	6'-0"	6'-0"	1'-6"	6 #6 (E.W.)
F6.5	6'-6"	6'-6"	1'-6"	7 #6 (E.W.)
F7.0	7'-0"	7'-0"	1'-8"	7 #6 (E.W.)
F7.5	7'-6"	7'-6"	1'-10"	8 #6 (E.W.)
F8.0	8'-0"	8'-0"	2'-0"	8 #6 (E.W.)
F8.5	8'-6"	8'-6"	2'-0"	8 #7 (E.W.)
F9.0	9'-0"	9'-0"	2'-0"	9 #7 (E.W.)

Mark	Size	Vertical Bars	Ties
P18	18"	(6) #6	(2) #3 @ 12" o.c.
P22	22"	(6) #6	(2) #3 @ 12" o.c.



Mark	Width	Length	Vertical Bars	Ties
P2436	24"	36"	(12) #6	(3) #3 @ 12" o.c.

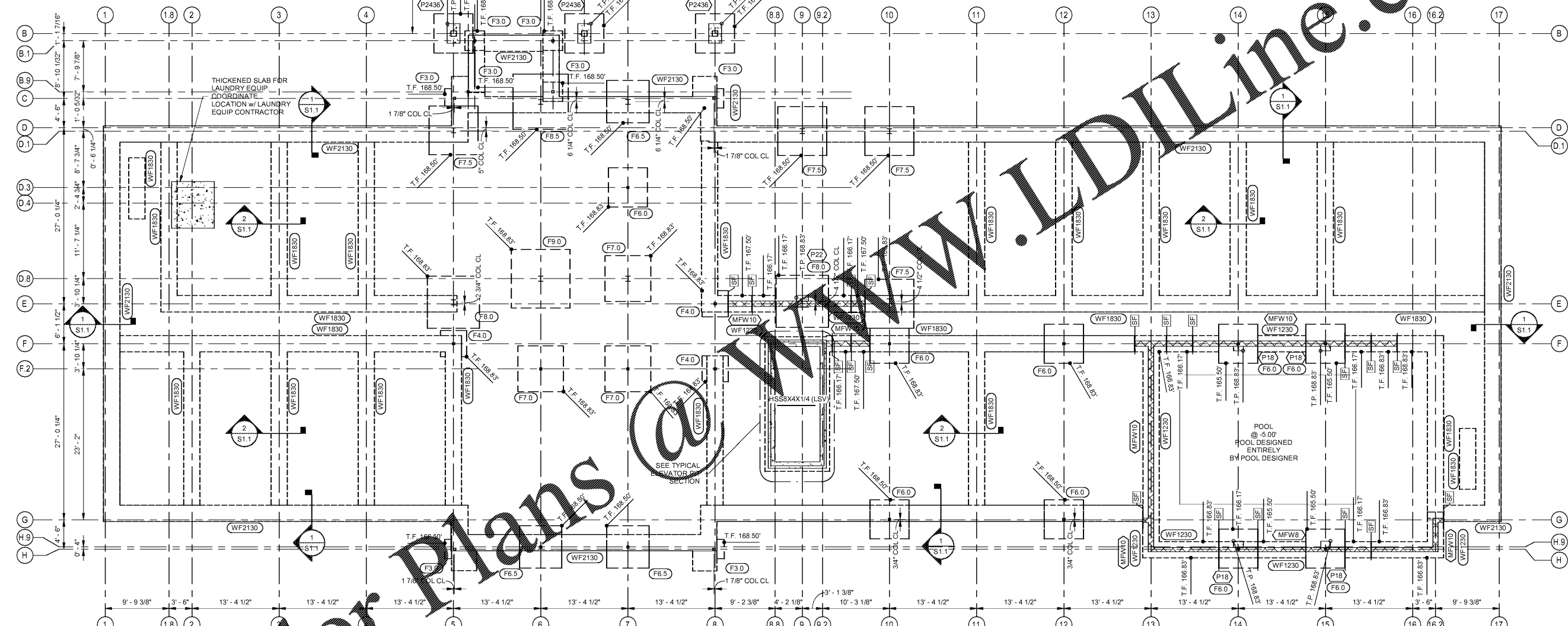


**CONTROL JOINT NOTE:**  
SLAB-ON-GRADE CONTROL JOINT SPACING AND LOCATIONS SHALL BE COORDINATED WITH ARCHITECTURAL DRAWINGS AND SPECIFICATIONS. A PLAN LAYOUT SHALL BE SUBMITTED TO THE ARCHITECT FOR REVIEW PRIOR TO CONSTRUCTION. THE MAXIMUM JOINT SPACING SHALL NOT EXCEED 15 FEET IN EITHER DIRECTION AND SHALL BE LOCATED TO CONFORM TO BAY SPACING WHEREVER POSSIBLE (AT COLUMN CENTERLINES, HALF-BAYS, THIRD-BAYS).

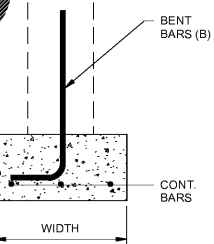
- NOTES:
- ALL TIE SIZES TO BE (3) - #3 BARS AT 1/2" o.c. (T&B) REMAINDER @ 12" o.c.
  - SEE FOUNDATION PLAN FOR PIER SIZES

**Square and Rectangular Concrete Pier Schedule**

SCALE: 3/4" = 1'-0"



Mark	Depth	Width	Reinforcing
WF1230	1'-0"	2'-6"	(3) #5 CONT.
WF1830	1'-6"	2'-6"	(4) #5 CONT.
WF2130	1'-9"	2'-6"	(4) #5 CONT.



- NOTES:
- CONTINUOUS BARS SHALL HAVE 3" MINIMUM COVER ON ALL SIDES.
  - BENT BARS SHALL BE PER THE FOUNDATION WALL SCHEDULE.

**Wall Footing Schedule with Masonry Foundation Walls**

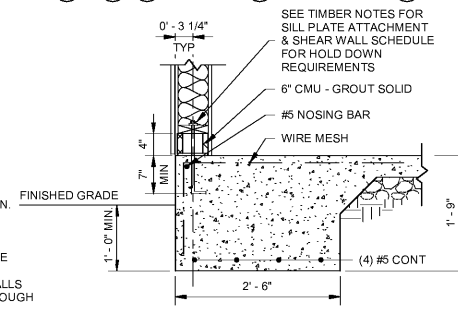
SCALE: 3/4" = 1'-0"

**Foundation Plan**

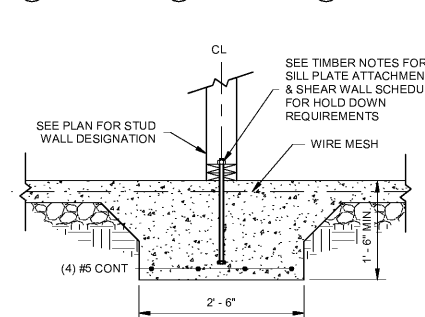
SCALE: 1/8" = 1'-0"

- NOTES:
- SEE CHART BELOW FOR FINISH FLOOR ELEVATION AND SLAB CONSTRUCTION.
  - TOP OF FOOTING ELEVATION (U.N.O.): 169' - 6"
  - COORDINATE BRICK SHELF ELEVATIONS WITH FINISH GRADE.
  - VERIFY ALL WALL LOCATIONS WITH ARCHITECTURAL DRAWINGS.
  - STEP FOOTINGS AS REQUIRED FOR UNDERGROUND PLUMBING. COORDINATE WITH MEP PLANS.
  - DENOTES SLEEVE LOCATIONS IN FOOTINGS/FOUNDATION WALLS FOR UNDERGROUND PIPING - SEE TYPICAL PIPE SLEEVE THROUGH FOUNDATION DETAIL

TYPE	SLAB REINFORCING	FINISH FLOOR
4" Concrete	66-W2 9xW2.9 WWF	169' - 6"
12" Concrete	66-W2 9xW2.9 WWF	169' - 6"



1 Typical Exterior Load Bearing Wall Footing SCALE: 3/4" = 1'-0"



2 Typical Interior Load Bearing Wall Footing SCALE: 3/4" = 1'-0"

Step Footing Marker	SF
Top of Pier Marker	T.P. ***
Top of Footing Marker	T.F. ***
Top of Wall Marker	T.W. ***
Square Pier Size Marker	P*
Rectangular Pier Size Marker	RP*
Column Footing Size Marker	F*
Combined Column Footing Size Marker	CF*
Foundation Wall Size Marker	W**
Retaining Wall Marker	RW*
Wall Footing Size Marker	WF***

**BARRY ISETT & ASSOCIATES**  
 610.398.0904  
 barryisett.com

**Holiday Inn Express & Suites**

**MEISTER COX ARCHITECTS**  
 INFO@MEISTER-COX.COM  
 PHONE: 610-375-1331 FAX: 610-375-4555  
 1522 PENN AVENUE WYOMISSING, PA 19310  
 WWW.MEISTER-COX.COM

**FOUNDATION PLAN AND SCHEDULES**

HOLIDAY INN EXPRESS & SUITES  
 INTERSECTION OF HAYNES PLACE & LAMM RD.  
 WILSON, NC 27783

STATUS: PERMIT  
 PROJ. DATE: 06-05-19  
 PROJ. NO. 1083218.000  
 PRINTED: 6/5/2019 4:24:08 PM  
 DRAWN BY: RPK  
 CHECKED BY: RMA  
 SHEET NO. S1.1  
 SCALE: As indicated

BIM 360/1083218.000\_HIEK-Wilson-NC\_R19/Struct\_1083218000\_HIEK-Wilson-NC\_R19.rvt