

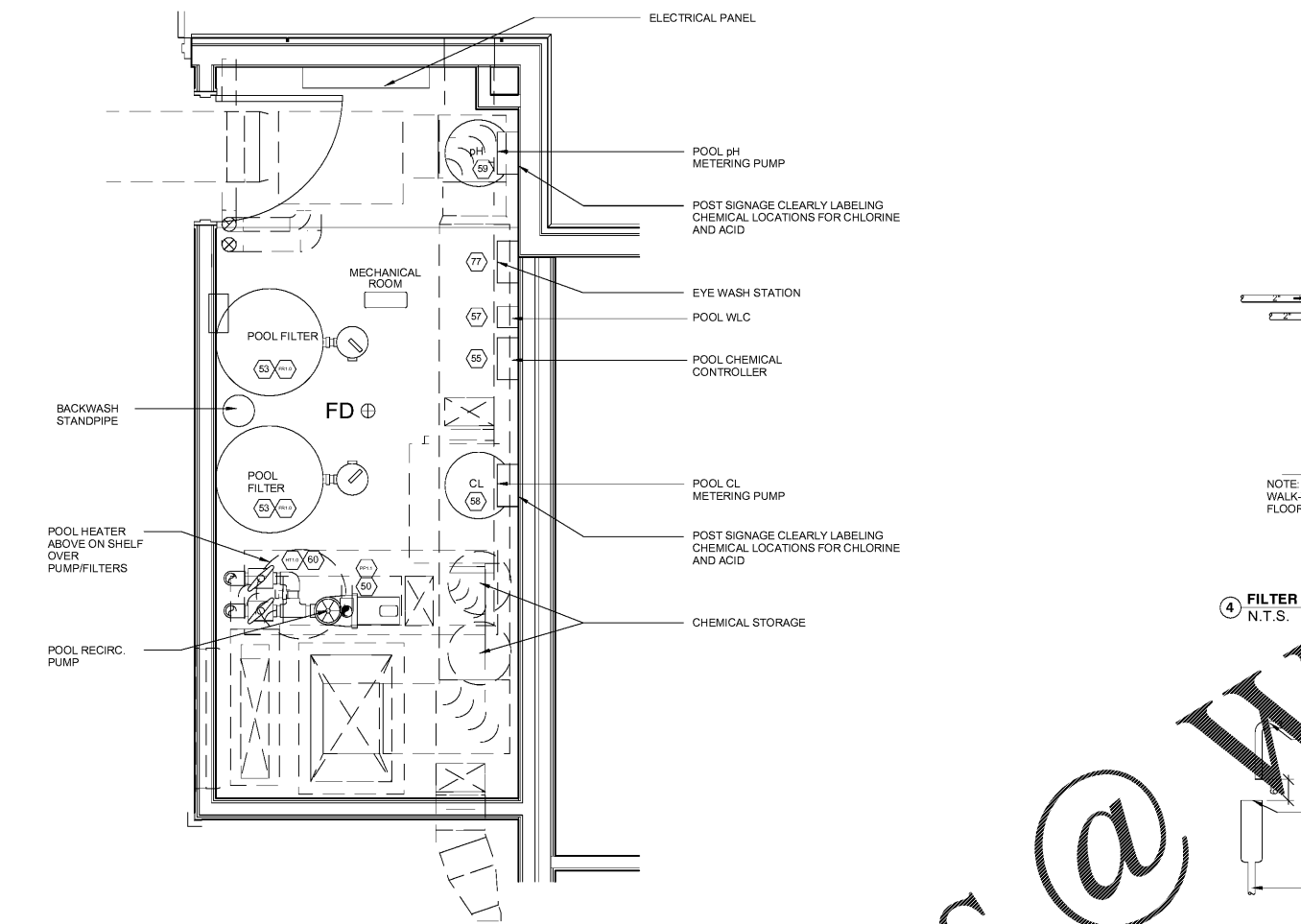
Pump Schedule												
Pool	Pump	Description	Model	Head	GPM	Discharge	Suction	Impeller	Strainer	HP	PH	Volt
P1.0	PP1.1	Fitness Pool Recirc	IntelliFlo VS+SVRS	56	130	2.0	2.0	NA	Integral	3.0	1	230

Filter Schedule													
Pool	Filter	Description	Flow	Model	Area	Num	Rate	BW	Dia	Length	Face	Man	Stack
			GPM		Sq. Ft.	#	GPM/SF	GPM	In	In	In	In	dwg
P1.0	FR1.0	Fitness Pool filter	130	TR100C	4.9	2	13	15	30	N/A	3	3	

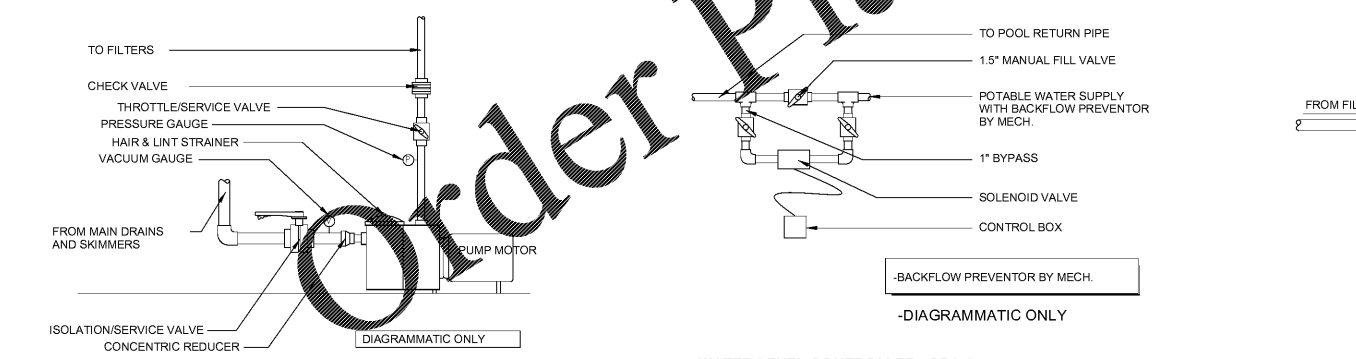
Sump Schedule										
Pool	Sump	Description	Flow	Size	Depth	Area Ea.	Open Ea.	Num	Vel. Ea.	Outlet
			GPM	In	In	Sq. Ft.	Sq. Ft.	#	FT/S	
P1.0	SCL1	Fitness Pool MD	130	18x18	8	2.25	1.27	2	0.11	3

Note: Areas used for velocity of flow are based on Lawson Aquatics V8G grates

Heater Schedule											
Pool	Heater	Description	Model	BTU	Flow	Demand	Warm-up	Num	Face	Bypass	Stack
					GPM	BTU	BTU	#	In	In	dwg
P1.0	HT1.0	Fitness Pool heater	Max E Therm	200000	65	7757	186767	1	2		

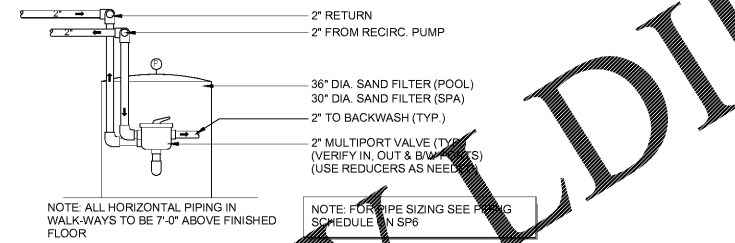


1 MECHANICAL ROOM PLAN
1/2" = 1'-0"

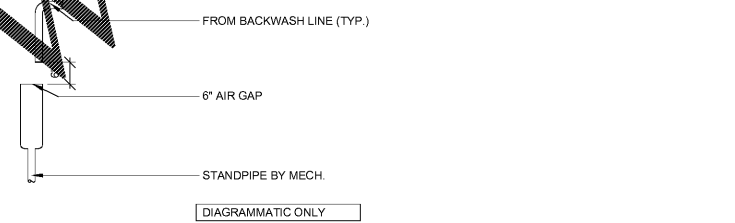


2 PUMP DETAIL - TYP.
N.T.S.

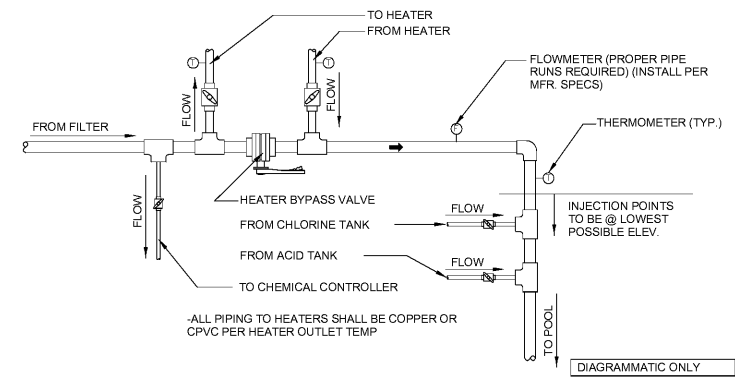
3 WATER LEVEL CONTROLLER - SPA & POOL
N.T.S.



4 FILTER ELEVATION
N.T.S.



5 BACKWASH STANDPIPE
N.T.S.



6 RETURN TO POOL
N.T.S.

Electrical contractor notes	
Electrical contractor shall be responsible for:	
1	Verify equipment location and coordinate electrical requirements with pool contractor
2	Electrical wiring to pumps, including starters and breakers
3	Electrical wiring shall conform to all applicable national, state and local electrical codes
4	All conductors for pump power or control shall be THHN/THWN stranded copper unless otherwise stated
5	Rigid conduit sch. 40 PVC - run one individual conduit per motor; minimum cover underground is 6"
6	All flexible conduit to be liquid tight non-metallic
7	Electrical wiring to chemical controllers and fee pumps
8	Electrical wiring to spa timer and spa emergency shutoff switches, where applicable
9	Electrical wiring & conduit to pool & spa lights

Mechanical contractor notes	
Mechanical contractor shall be responsible for:	
1	Provide gas service, combustion air, ventilation and exhaust piping to pool heaters
2	Provide equipment room and pool enclosure ventilation

Plumbing contractor notes	
Plumbing contractor shall be responsible for:	
1	Floor drains required in the equipment room
2	Hose bibbs required in equipment room and pool enclosure for convenient service of the pool area with a maximum 50' hose
3	Hub drain for filter backwash
4	2" protected water supply for pool fill

General Notes	
1	Pool contractor shall set pumps, electrical contractor shall provide starters and electrical service to pumps
2	Verify all electrical requirements with electrical contractor
3	Piping from pool heater/heat exchanger shall be CPVC piping
4	Equipment and piping shown for schematic purposes only; pool contractor shall locate equipment and piping in the field
5	See piping schematics for valve and other item locations; locations given are diagrammatic in relation to other items within the systems
6	All valves shall be numbered by the pool contractor and all pipes shown shall be labeled with the flow direction shown

No.	Description	Date

MECH. ROOM PLAN & DETAILS

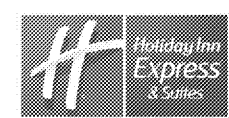
HOLIDAY INN EXPRESS & SUITES

INTERSECTION OF HAYNES PLACE & LAMM RD.
WILSON, NC 27783

MEISTER-COX ARCHITECTS

INFO@MEISTER-COX.COM
PHONE: 610-375-1331 FAX: 610-375-4665
1622 PENN AVENUE WYOMISSING, PA 19310
WWW.MEISTER-COX.COM

STATUS:	BIDDING
PROJ. DATE:	06-07-19
PROJ. NO.	18-176
PRINTED:	6/7/2019 7:12:47 PM
DRAWN BY:	RFF
CHECKED BY:	TGC
SHEET NO.	SP5
SCALE:	1/2" = 1'-0"



N:\Active Projects\hospitality\2018 Holiday Inn Express - Wilson, NC\Drawings CAD-Rev\18-176.rvt