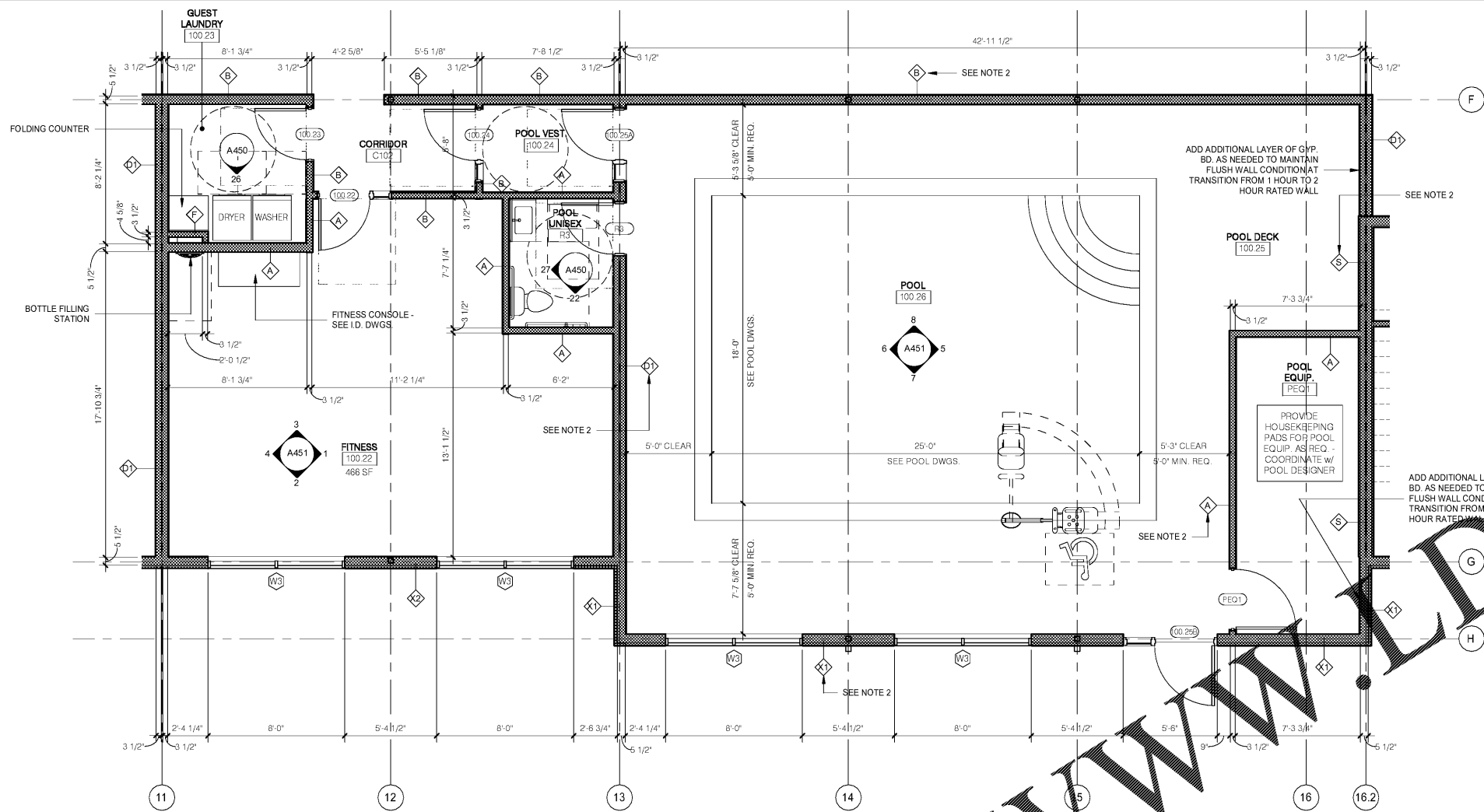
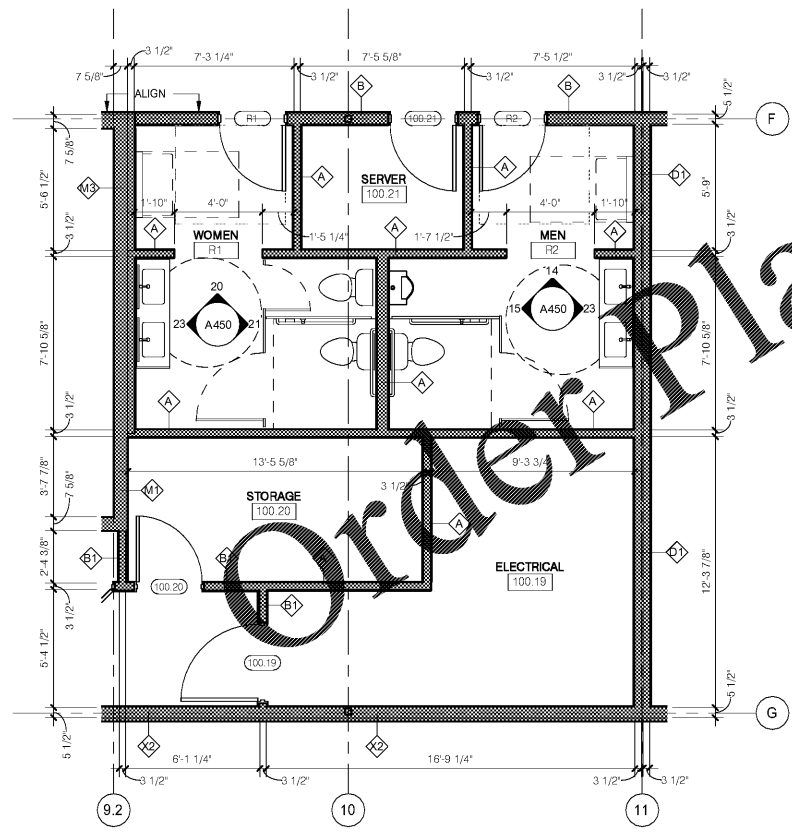


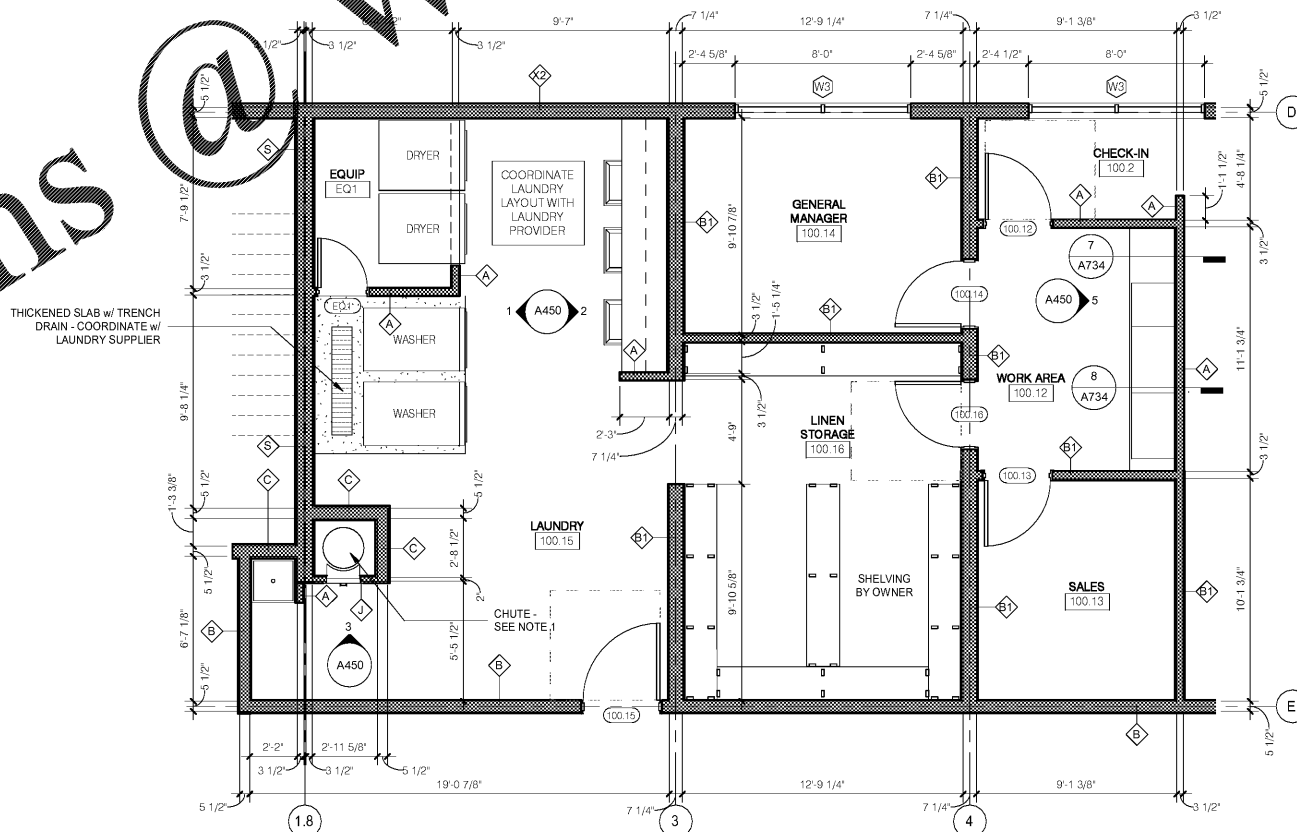
N:\Active Projects\Hospitality\018 Holiday Inn Express - Wilson, NC\Drawings CAD-Rev\18-176.rvt



1 ENLARGED FITNESS / POOL PLAN
1/4" = 1'-0"



2 ENLARGED PUBLIC RESTROOMS / STOR. / ELECTRICAL PLAN
1/4" = 1'-0"



3 ENLARGED BACK OF HOUSE PLAN
1/4" = 1'-0"

- NOTES**
- THE LINEN CHUTE SHALL BE VALIANT PRODUCTS .060 GAUGE COATED ALUMINUM AND SHALL EXTEND THROUGH ROOF PER MANUFACTURERS REQUIREMENTS. INTAKE DOORS TO BE 18" x 18" AND DISCHARGE DOOR TO BE 24" x 30". ALL DOORS SHALL BE 1 1/2 HOURS AND BE SELF CLOSING. OTHER MANUFACTURERS WILL BE ALLOWED.
 - USE OF BATT INSULATION OR LOOSE FILL INSULATION AT POOL IS PROHIBITED. USE MED. DENSITY CLOSED CELL SPRAY FOAM INSULATION AT POOL AND POOL EQUIPMENT ROOMS.

WWW.LDILine.com

No.	Description	Date

MEISTER COX ARCHITECTS
 INFO@MEISTER-COX.COM
 PHONE: 610-375-1331 FAX: 610-375-4665
 1522 PENN AVENUE WYOMISSING, PA 19380
 WWW.MEISTER-COX.COM

ENLARGED PUBLIC & BOH FLOOR PLANS
 HOLIDAY INN EXPRESS & SUITES
 INTERSECTION OF HAYNES PLACE & LAMM RD.
 WILSON, NC 27893

STATUS:	BIDDING
PROJ. DATE:	06-07-19
PROJ. NO.	18-176
PRINTED:	6/7/2019 7:11:31 PM
DRAWN BY:	RFF
CHECKED BY:	TGC
SHEET NO.	A441
SCALE:	1/4" = 1'-0"

