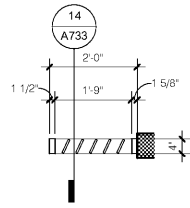


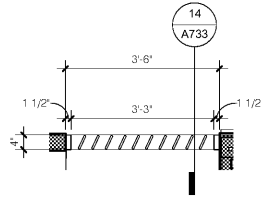
ALL FORMULA BLUE PRODUCTS MUST BE PROVIDED BY CONTRACTED VENDORS LISTED AND KNOCK-OFFS ARE NOT PERMITTED. ANY PRODUCTS FOUND TO BE KNOCK-OFFS SHALL BE REQUIRED FOR REPLACEMENT UPON INSPECTION.

EXP-WD1 FINISHED SLAT SCREEN BLADES. BLADE PATTERN LEFT TO RIGHT: A, B, C, D AND E. SEE A733/17 DETAIL.



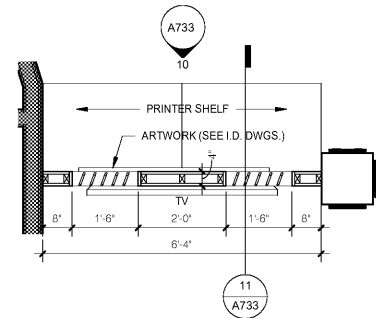
15 LOUNGE_SCREEN 2 @ MARKET PLAN
1/2" = 1'-0"

EXP-WD1 FINISHED SLAT SCREEN BLADES. BLADE PATTERN LEFT TO RIGHT: A, B, C, D, E, F, A, B, C AND D. SEE A733/17 DETAIL.

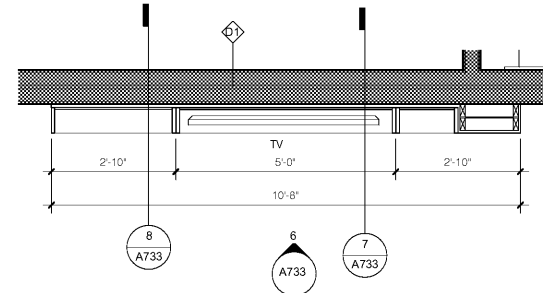


12 LOUNGE_SCREEN 1 @ MARKET PLAN
1/2" = 1'-0"

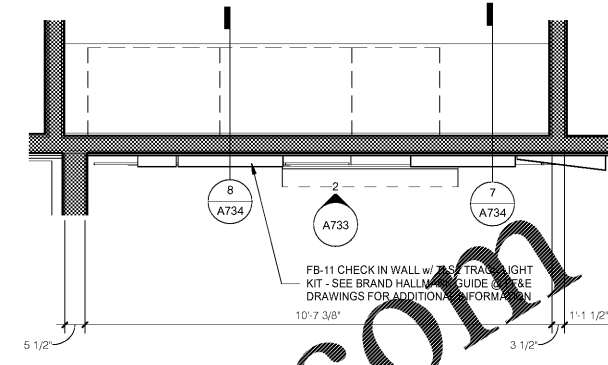
EXP-WD1 FINISHED SLAT SCREEN BLADES. BLADE PATTERN RIGHT TO LEFT: A, B, C, D AND E. SOLID WOOD PANEL A, B, C, D AND E. SEE A733/17 DETAIL.



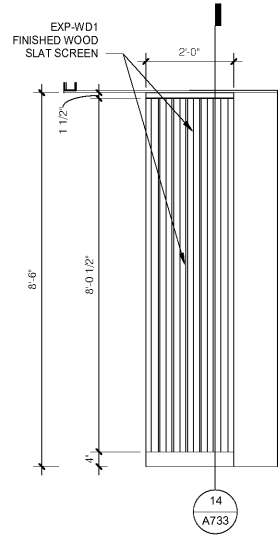
9 BUSINESS_TV_SCREEN_WALL_PLAN
1/2" = 1'-0"



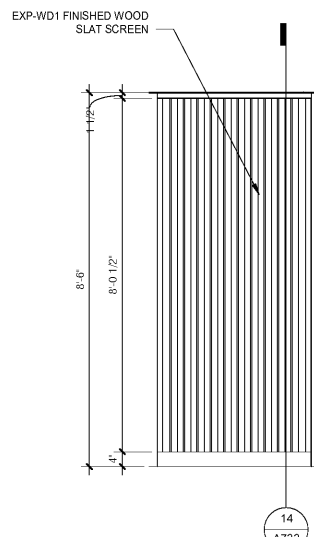
5 ENLARGED_TV_FEATURE_WALL_PLAN
1/2" = 1'-0"



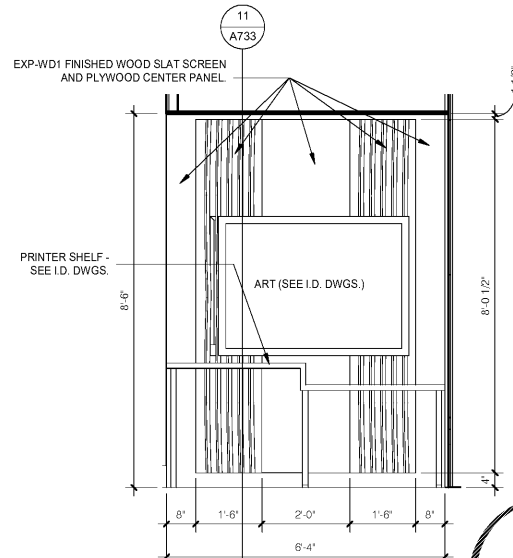
1 ENLARGED_CHECK-IN_WALL_PLAN
1/2" = 1'-0"



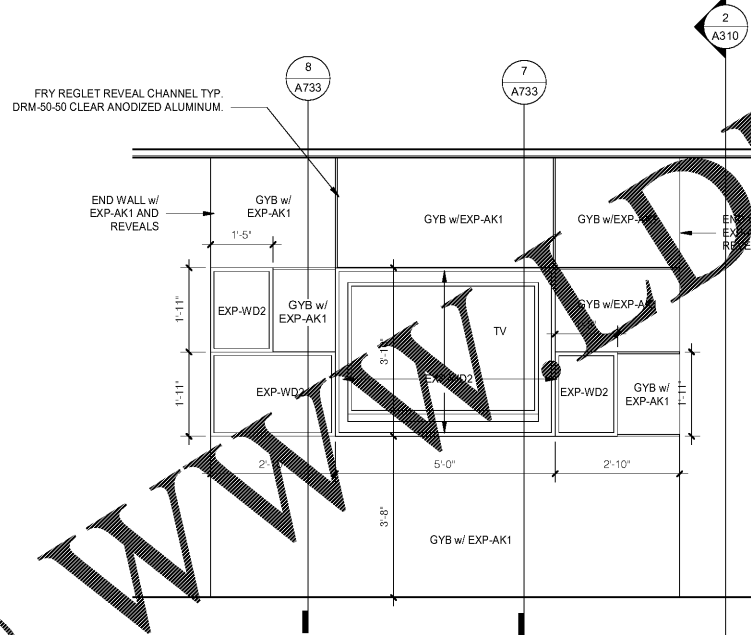
16 SCREEN 2 @ MARKET ELEVATION
1/2" = 1'-0"



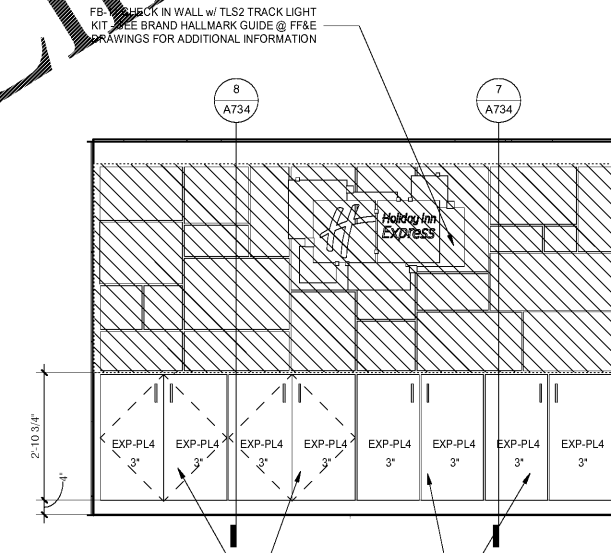
18 SCREEN 1 @ MARKET ELEVATION
1/2" = 1'-0"



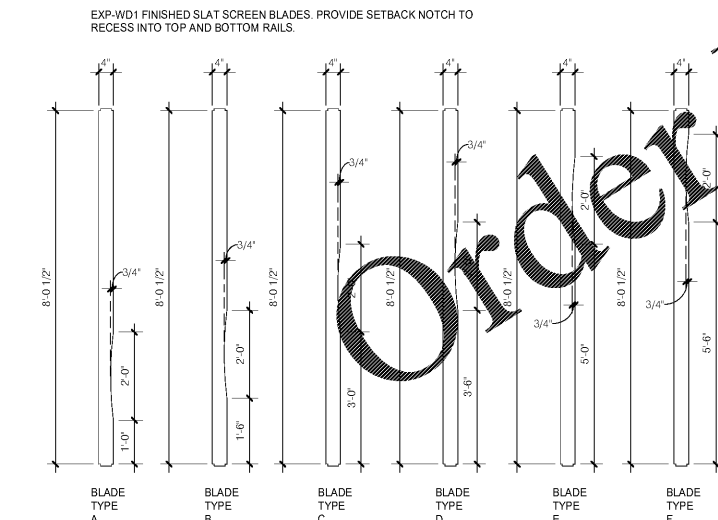
10 BUSINESS_SCREEN_ELEVATION
1/2" = 1'-0"



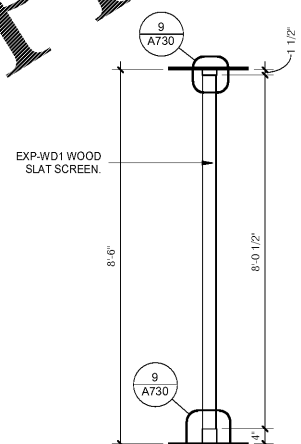
6 TV_FEATURE_WALL_ELEVATION
1/2" = 1'-0"



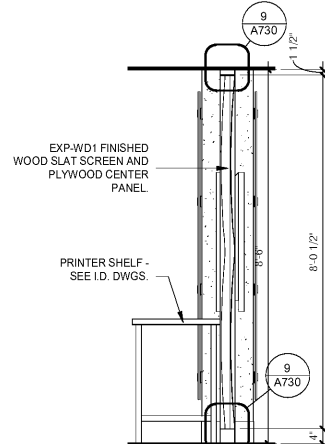
2 ENLARGED_CHECK-IN_WALL_ELEVATION
1/2" = 1'-0"



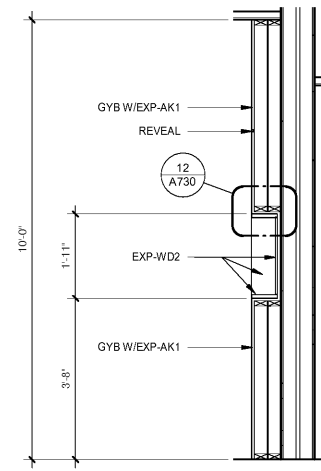
17 LOUNGE_SCREEN_BLADES
1/2" = 1'-0"



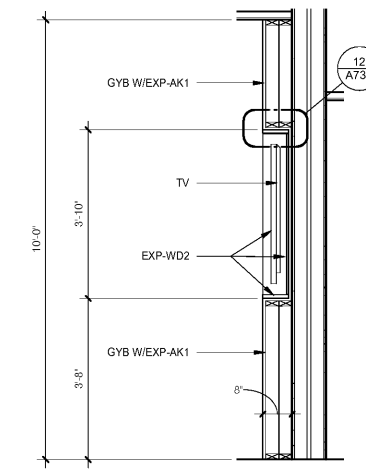
14 LOUNGE_SCREEN_1_SECTION
1/2" = 1'-0"



11 BUSINESS_DIVIDER_WALL_SECTION2
1/2" = 1'-0"



8 TV_FEATURE_WALL_SECTION_2
1/2" = 1'-0"



7 TV_FEATURE_WALL_SECTION_1
1/2" = 1'-0"

NOTE: EXP-AK1 MANUFACTURER CAN PROVIDE PRE FINISHED EXP-AK1 PANELS WHICH CAN BE USED IN LIEU OF GYP. BD. w/ FIELD APPLIED FINISH. COORDINATE w/ MANUFACTURER AND ADJUST CONSTRUCTION DETAILS AS REQ. TO ACCEPT PANELS.

NOTE: EXP-AK1 MANUFACTURER CAN PROVIDE PRE FINISHED EXP-AK1 PANELS WHICH CAN BE USED IN LIEU OF GYP. BD. w/ FIELD APPLIED FINISH. COORDINATE w/ MANUFACTURER AND ADJUST CONSTRUCTION DETAILS AS REQ. TO ACCEPT PANELS.

No.	Description	Date

MEISTER-COX ARCHITECTS
 INFO@MEISTER-COX.COM
 PHONE: 610-375-1331 FAX: 610-375-4655
 1522 PENN AVENUE WYOMISSING, PA 19610
 WWW.MEISTER-COX.COM

PUBLIC AREA CASEWORK AND MILLWORK DETAILS
HOLIDAY INN EXPRESS & SUITES
 INTERSECTION OF HAYNES PLACE & LAMM RD.
 WILSON, NC 27893

STATUS: BIDDING
 PROJ. DATE: 06-07-19
 PROJ. NO: 18-176
 PRINTED: 6/7/2019 7:12:25 PM
 DRAWN BY: RFF
 CHECKED BY: TGC
 SHEET NO. **A733**
 SCALE: 1/2" = 1'-0"



N:\Active Projects\hospitality\308 Holiday Inn Express - Wilson, NC\Drawings CAD-Rev\18-176.rvt