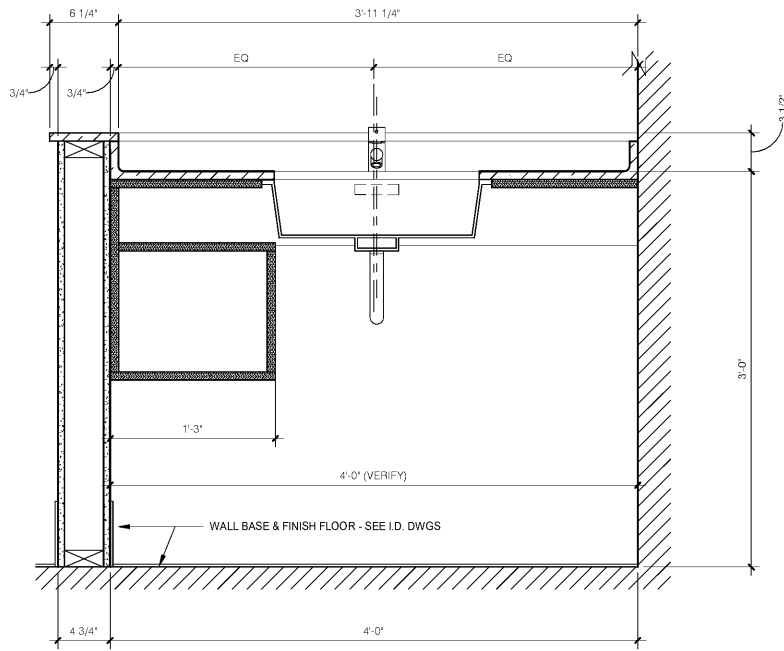
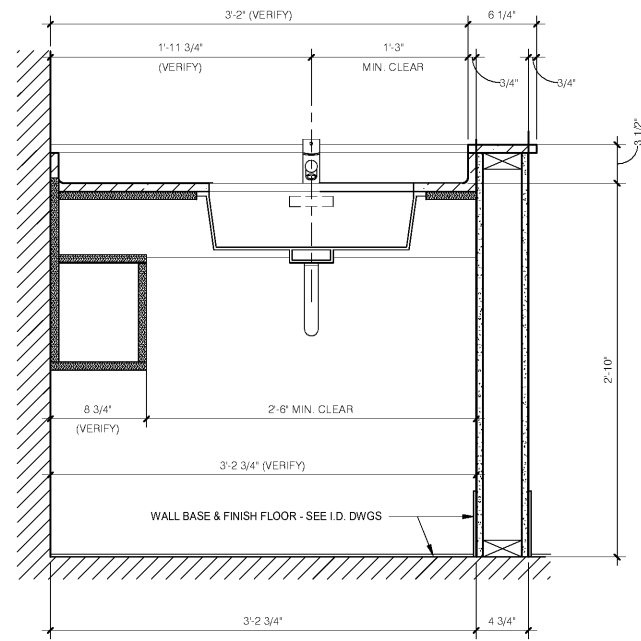


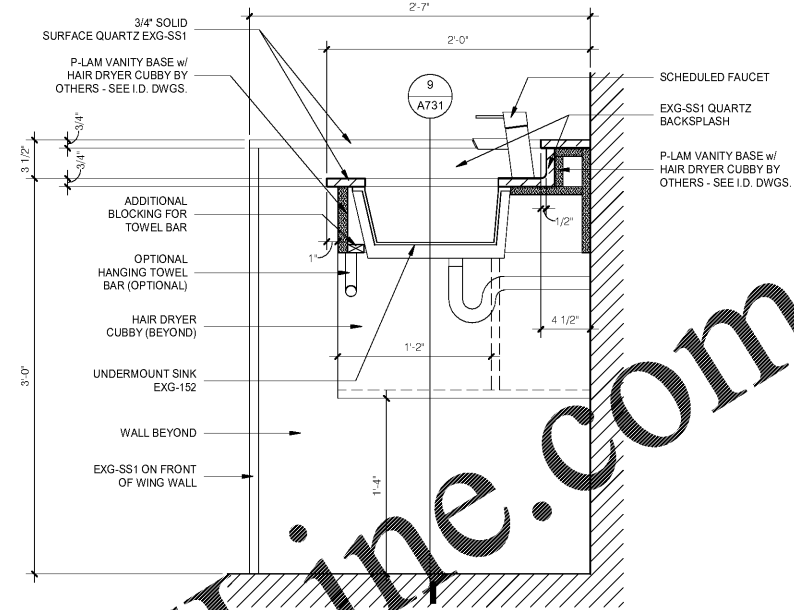
N:\Active Projects\hospitality\2018 Holiday Inn Express - Wilson, NC\Drawings CAD-Rev\18-176.rvt



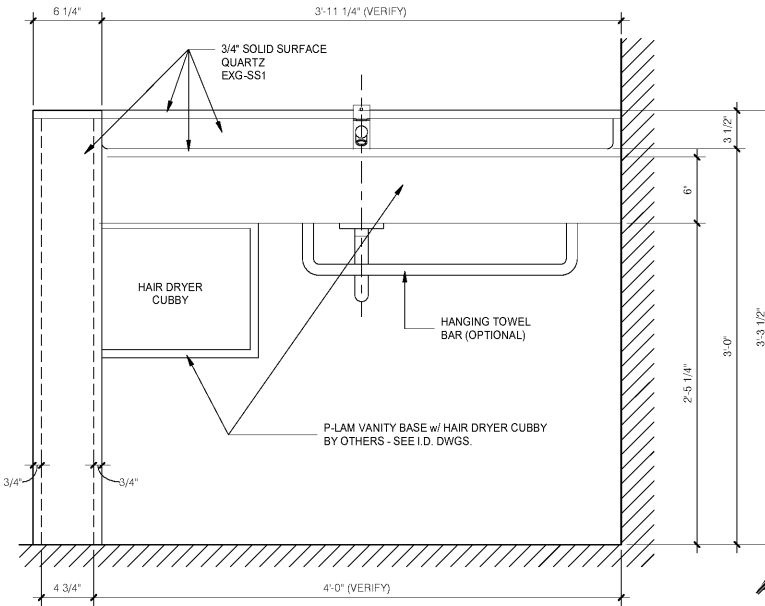
9 TYP. VANITY CABINET SECTION @ WING WALL
1 1/2" = 1'-0"



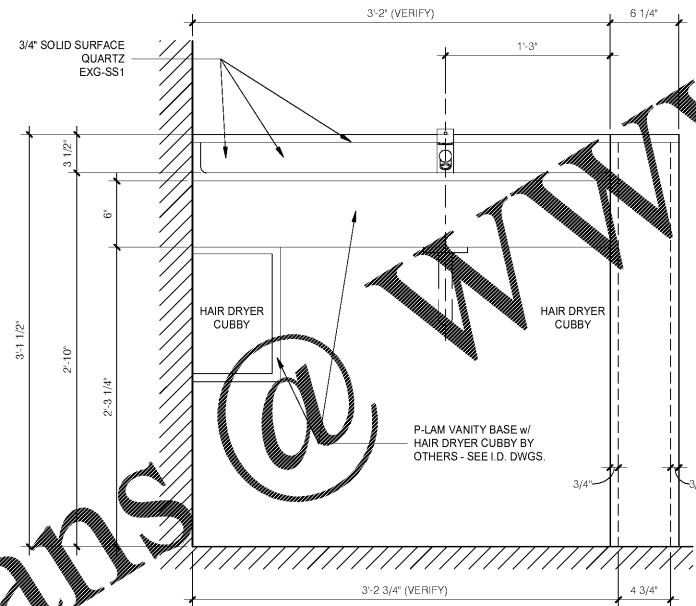
2 TYP. ADA VANITY CABINET SECTION @ WING WALL
1 1/2" = 1'-0"



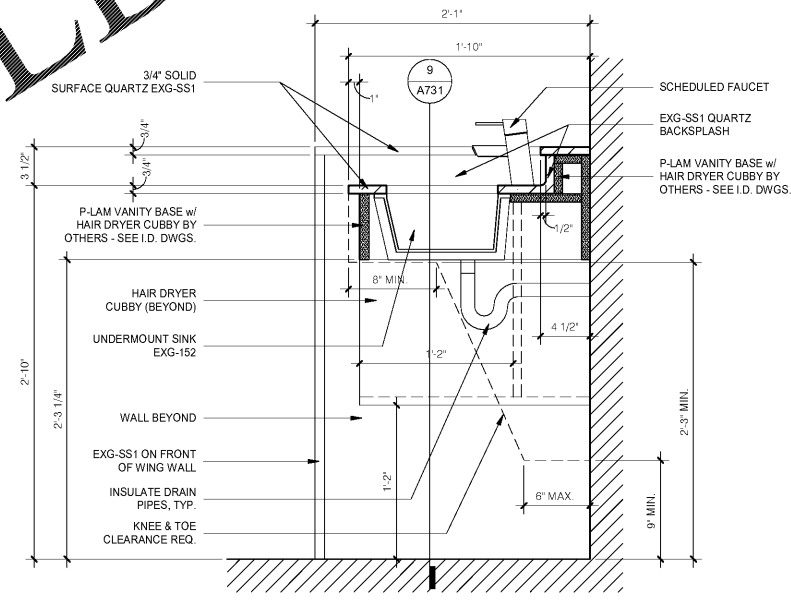
10 TYP. VANITY CROSS SECTION
1 1/2" = 1'-0"



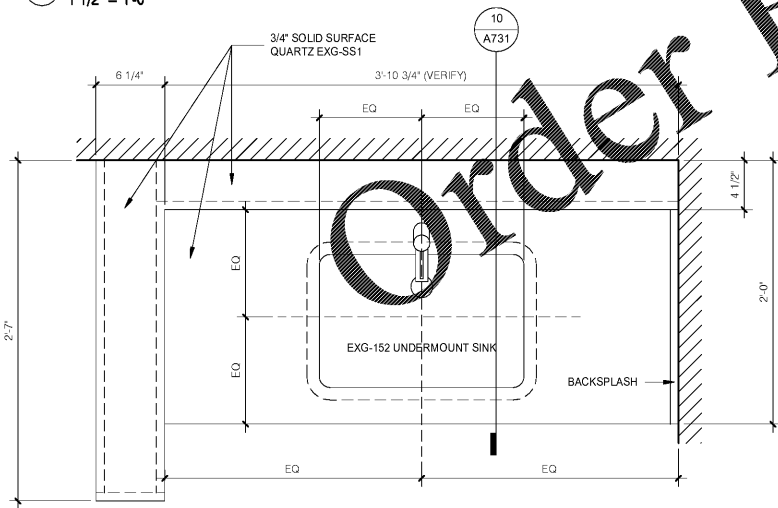
8 TYP. VANITY ELEVATION
1 1/2" = 1'-0"



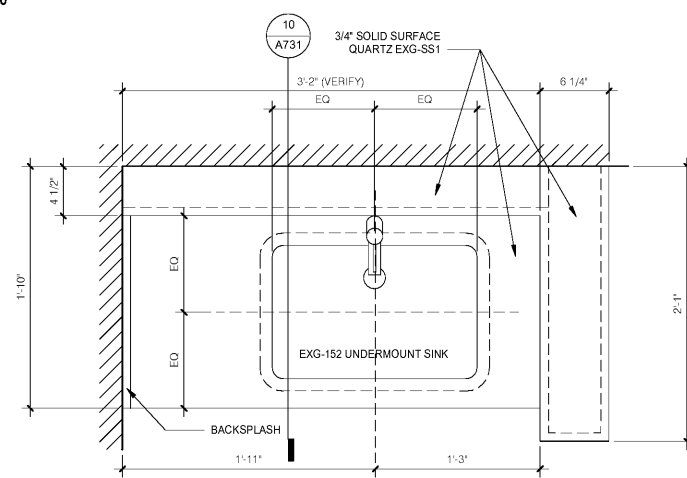
3 TYP. ADA VANITY ELEVATION @ WING WALL
1 1/2" = 1'-0"



11 TYP. ADA VANITY CROSS SECTION
1 1/2" = 1'-0"



7 TYP. VANITY CABINET PLAN
1 1/2" = 1'-0"



1 TYP. ADA VANITY CABINET PLAN
1 1/2" = 1'-0"

ALL FORMULA BLUE PRODUCTS MUST BE PROVIDED BY CONTRACTED VENDORS LISTED AND KNOCK-OFFS ARE NOT PERMITTED. ANY PRODUCTS FOUND TO BE KNOCK-OFFS SHALL BE REQUIRED FOR REPLACEMENT UPON INSPECTION.



No.	Description	Date

DISCLAIMER: PC is providing, by agreement with certain parties, materials stored electronically. The parties recognize that data, plans, specifications, reports, drawings, and other documents are subject to unauthorized alteration, copying, transmission, conversion, media degradation, software error or human alteration. Accordingly, all such documents are provided as a service and not as a record document. Any reliance thereon is deemed to be the responsibility of the user. Stripped hard copies of the Architect's instruments of service are the only true documents of record.

MEISTER COX ARCHITECTS
 INFO@MEISTER-COX.COM
 PHONE: 610-375-1331 FAX: 610-375-4655
 1522 PENN AVENUE WYOMISSING, PA 19610
 WWW.MEISTER-COX.COM

TYP. GUESTROOM VANITY DETAILS
 HOLIDAY INN EXPRESS & SUITES
 INTERSECTION OF HAYNES PLACE & LAMM RD.
 WILSON, NC 27893

STATUS:	BIDDING
PROJ. DATE:	06-07-19
PROJ. NO.:	18-176
PRINTED:	6/7/2019 7:12:20 PM
DRAWN BY:	RFF
CHECKED BY:	TGC
SHEET NO.:	A731
SCALE:	1 1/2" = 1'-0"