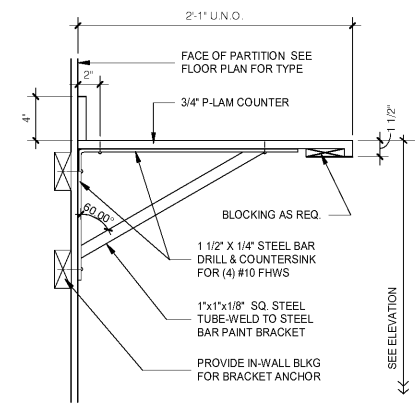
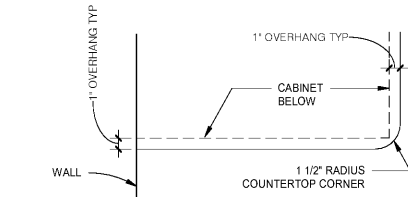


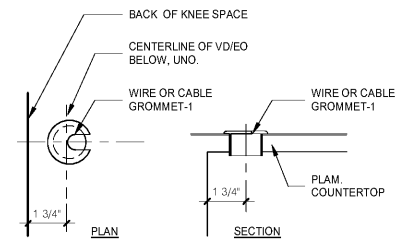
N:\Active Projects\hospitality\2018 Holiday Inn Express - Wilson, NC\Drawings CAD-Rev\18-176.rvt



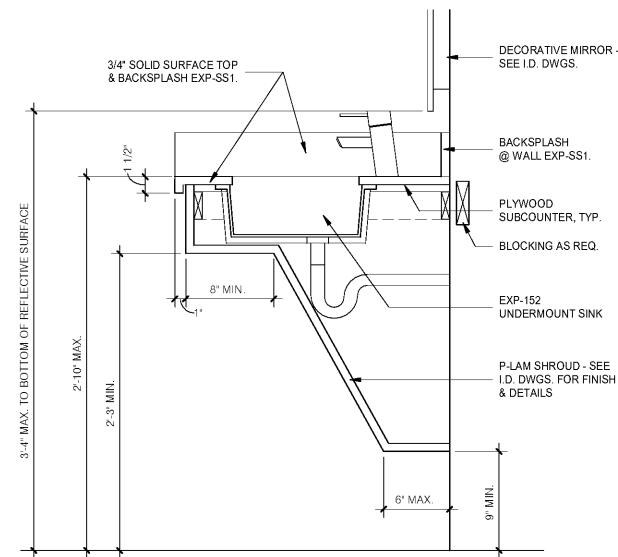
5 OPEN COUNTER W/ SUPPORT BRACKETS (CSB-M)
1 1/2\"/>



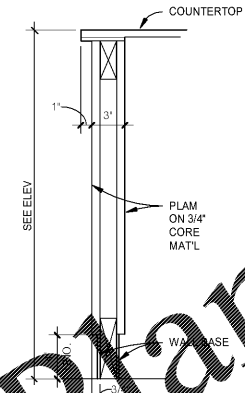
3 TYP. COUNTERTOP OPEN CORNER
1 1/2\"/>



4 COUNTERTOP GROMMETS
3\"/>



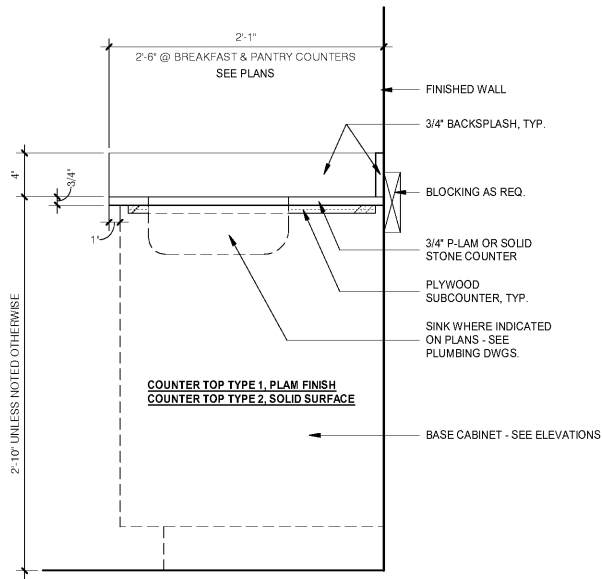
8 PUBLIC BATHROOM SINK SECTION
1 1/2\"/>



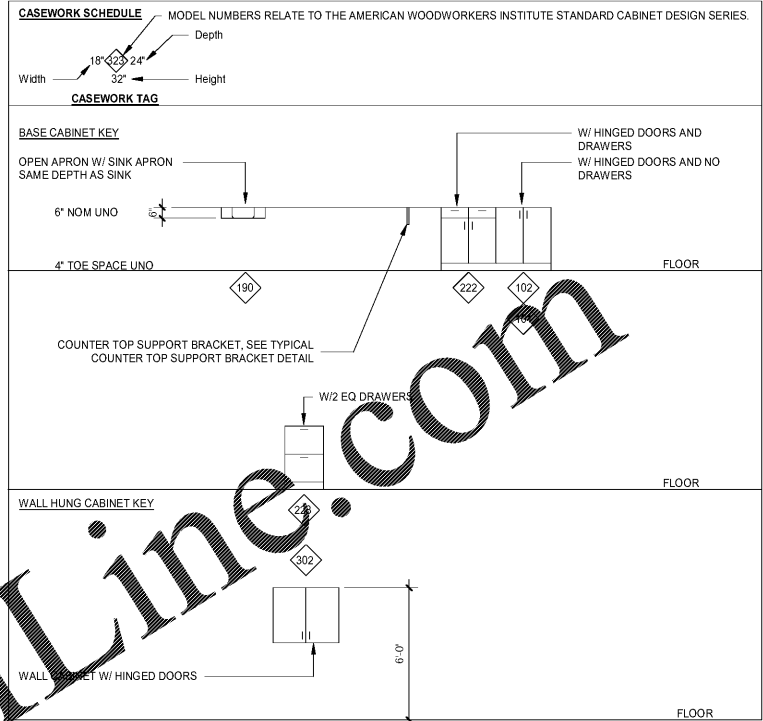
7 COUNTERTOP SUPPORT WALL (CSB-P)
1 1/2\"/>

COUNTERTOP NOTES

- FINISHES NOTES:
1. P-LAM TOP TYPES, P-LAM FINISH ALL EXPOSED SURFACES INCLUDING ENDS AND BACKSPLASHES.
 2. SOLID SURFACE TOP TYPES, FINISH ALL EXPOSED SURFACES OF SOLID SURFACE TOP AND BACKSPLASH.
 3. SEE I.D. DWGS. TYPICAL FINISH COLOR SELECTION.
 4. SEE PLANS/ELEVATIONS AND PLUMBING DWGS. FOR SINK TYPES AND LOCATIONS.



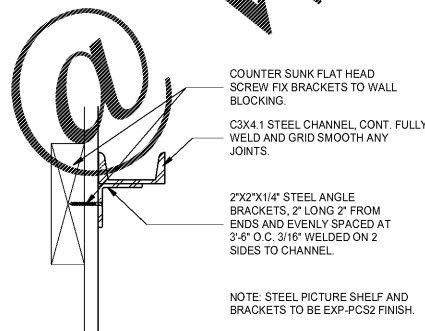
2 TYP. COUNTERTOP DETAIL
1 1/2\"/>



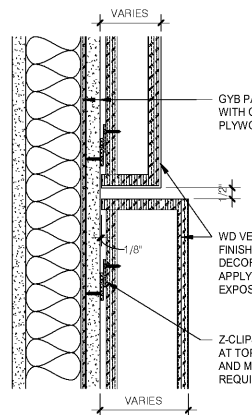
CASEWORK GENERAL NOTES

1. CASEWORK SUBCONTRACTOR SHOULD INSPECT THE ALIGNMENT OF ALL GYPSUM BOARD CONSTRUCTION AND SHOULD NOTIFY THE ARCHITECT OF ANY CONDITION THAT WOULD PREVENT THEM FROM COMPLETING THEIR WORK. CASEWORK SUBCONTRACTOR SHALL COORDINATE WITH THE GENERAL CONTRACTOR ON THE LOCATION AND INSTALLATION OF ALL SOUNDS AND SPOILING INSIDE THE WALL CONSTRUCTION RELATED TO CABINETWORK.
2. CASEWORK SHALL HAVE A FINE, SMOOTH FINISH, FREE FROM MACHINE OR TOOL MARKS, ABRASIONS OR RAISED GRAIN ON EXPOSED SURFACES. JOINTS SHALL BE TIGHT AND SO FORMED AS TO CONCEAL SHRINKAGE, MITERS OR MORE FROM HEEL TO POINT SHALL BE GLUED, 4\"/>
3. SCREW AND GLUE ALL JOINTS AND CONNECTIONS. NO NAILING PERMITTED.
4. ALL HIGH-PRESSURE PLASTIC LAMINATE WORK SHALL BE SOLID, IN ONE PIECE AND WITHOUT SPLICE JOINTS (EXCEPT WHERE PROHIBITED BY THE MAXIMUM AVAILABLE SIZE OF THE MANUFACTURED PLASTIC LAMINATE MATERIALS) AND SHALL BE BONDED TO THE CORE STOCK USING THE \"HOT PLATE\" PRESS METHOD. ALL EDGES AND EXPOSED CORNERS TO BE FINELY JOINED; UNSIGHTLY JOINTS, NICKS, SCRATCHES, CHOPS, DEFECTS, WAVY OR UNEVEN LAMINATION WILL BE REJECTED. IF JOINTS ARE REQUIRED DUE TO LENGTH OF UNIT, JOINTS TO BE CENTERED SYMMETRICALLY OVER THE LENGTH OF THE UNIT.
5. ALL SURFACES TO BE LAMINATED (PLASTIC LAMINATE OR VENEERED) SHALL BE WITH THE SAME TYPE OF MATERIAL ON THE BOTH SIDES (BACKING) WHETHER VISIBLE OR NOT. PANEL AND PLYWOOD BACKS NOT EXPOSED TO VIEW SHALL BE VENEERED WITH THE SAME SPECIES AND THICKNESS OF VENEER USED FOR THE FACES, FOR BALANCED CONSTRUCTION. HOWEVER, THE VENEERED SURFACES NOT EXPOSED TO VIEW NEED NOT BE MATCHED.
6. CASEWORK CABINETS WHERE THE DOORS HAVING PLASTIC LAMINATE FACES SHALL ALSO HAVE BACKS AND EDGES OF THE SAME PLASTIC LAMINATE AS THE FACE. DRAWERS HAVING PLASTIC LAMINATE FACES SHALL HAVE BIRCH VENEER SOLID CORE INTERIOR CONSTRUCTION (BOTTOM AND SIDES) WITH CLEAR LAQUER FINISH. DRAWER FRONT AND SIDES TO BE GROOVED TO RECEIVE (3) PLY BOTTOM PIECE.
7. WHERE ELECTRICAL WORK IS SPECIFIED IN CABINETS, LAMPS AND FIXTURES ARE TO BE PROVIDED BY THE GENERAL CONTRACTOR. CUTOUTS FOR SWITCHES, OUTLETS, AND WIRING DEVICES TO BE INSTALLED IN CABINETS IN THE FIELD ARE BY THE CASEWORK SUBCONTRACTOR AND ARE TO BE COORDINATED BY THE GENERAL CONTRACTOR.
8. CASEWORK SUBCONTRACTOR SHALL PROVIDE ALL HARDWARE REQUIRED FOR FINISHED INSTALLATION OF CABINETS.
9. FIELD VERIFY LOCATION OF ALL HOLES THROUGH ALL NEW COUNTERTOPS AND MILLWORK. PROVIDE A GROMMET INSERT AT EACH LOCATION WERE ELECTRICAL, VOICEDATA OUTLETS OCCUR. SEE DETAILS FOR SIZES, LOCATIONS AND FINISHES OF GROMMET.
10. CASEWORK SUBCONTRACTOR SHALL SHIM AND LEVEL ALL COUNTERS TO BE LOCATED OVER FILES, AND PROVIDE A STABLE TEMPORARY SUPPORT UNTIL FILES ARE DELIVERED FOR INSTALLATION. CONTRACTOR TO PROVIDE FILLER STRIPS AS REQUIRED BETWEEN FILE CABINETS AND COUNTERTOPS, AND BETWEEN CABINETS AND SURROUNDING WALLS AND CEILINGS.
11. CASEWORK SUBCONTRACTOR IS RESPONSIBLE TO CLEAN AND POLISH AND TOUCH UP AS REQUIRED ALL WOODWORK AFTER THE INSTALLATION IS COMPLETED.
12. CASEWORK FINISHES ARE INDICATED IN THE ROOM FINISHES SCHEDULE AND/OR INTERIOR ELEVATIONS.

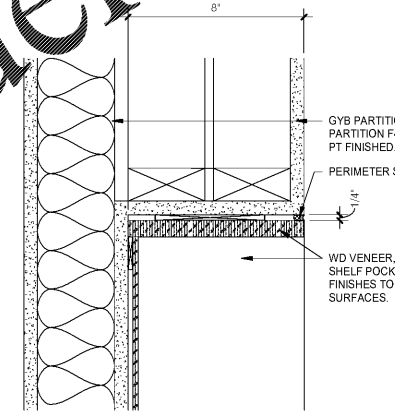
CABINET HARDWARE:
 CABINET DOOR HANDLE: JG Edelen #7600-320 (12 1/2\"/>



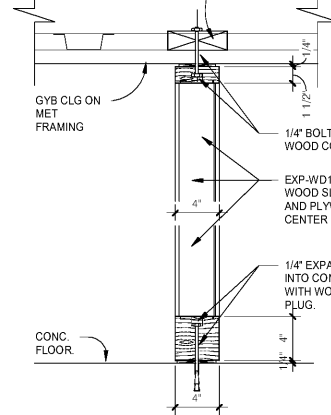
13 PICTURE SHELF DETAIL
3\"/>



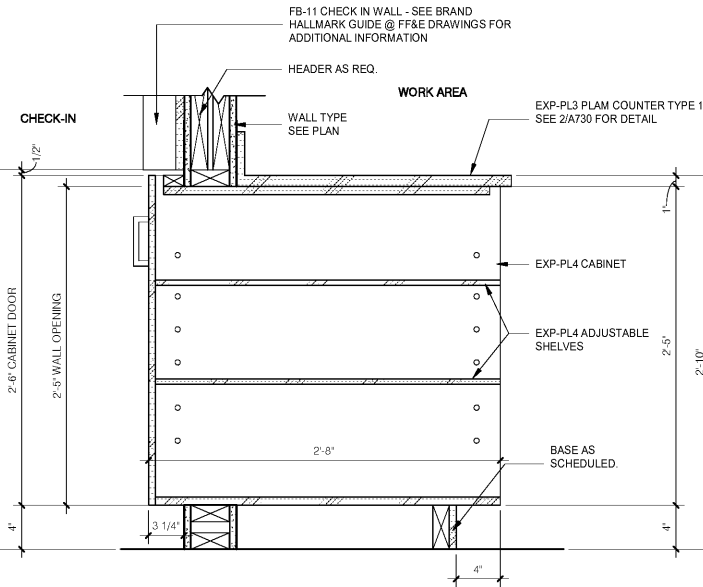
11 WALL PANEL SUPPORT
3\"/>



12 WALL SHELF POCKETS
3\"/>

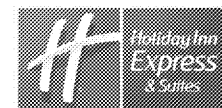


9 WOOD SLAT SCREEN SECTION
1 1/2\"/>



10 CHECK-IN WALL DRAWER DETAIL
1 1/2\"/>

ALL FORMULA BLUE PRODUCTS MUST BE PROVIDED BY CONTRACTED VENDORS LISTED AND KNOCK-OFFS ARE NOT PERMITTED. ANY PRODUCTS FOUND TO BE KNOCK-OFFS SHALL BE REQUIRED FOR REPLACEMENT UPON INSPECTION.



No.	Description	Date

MEISTER COX ARCHITECTS

INFO@MEISTERCOX.COM
 PHONE: 610-375-1331 FAX: 610-375-4655
 1522 PENN AVENUE WYOMISSING, PA 19380
 WWW.MEISTERCOX.COM

CASEWORK TYPES AND DETAILS

HOLIDAY INN EXPRESS & SUITES
 INTERSECTION OF HAYNES PLACE & LAMM RD.
 WILSON, NC 27893

STATUS:	BIDDING
PROJ. DATE:	06-07-19
PROJ. NO.:	18-176
PRINTED:	6/7/2019 7:12:19 PM
DRAWN BY:	RFF
CHECKED BY:	TGC
SHEET NO.:	A730
SCALE:	As indicated