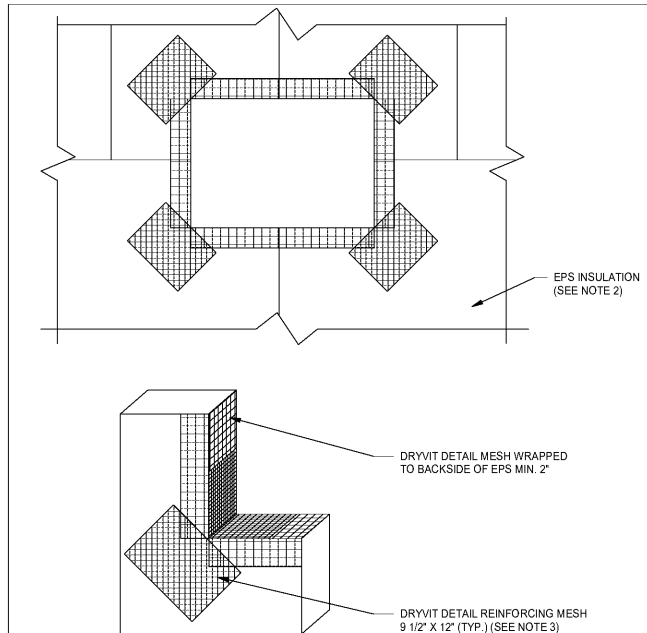


N:\Active Projects\hospitality\2018 Holiday Inn Express - Wilson, NC\Drawings CAD-Rev\18-176.rvt

### OPMD 0.0.25

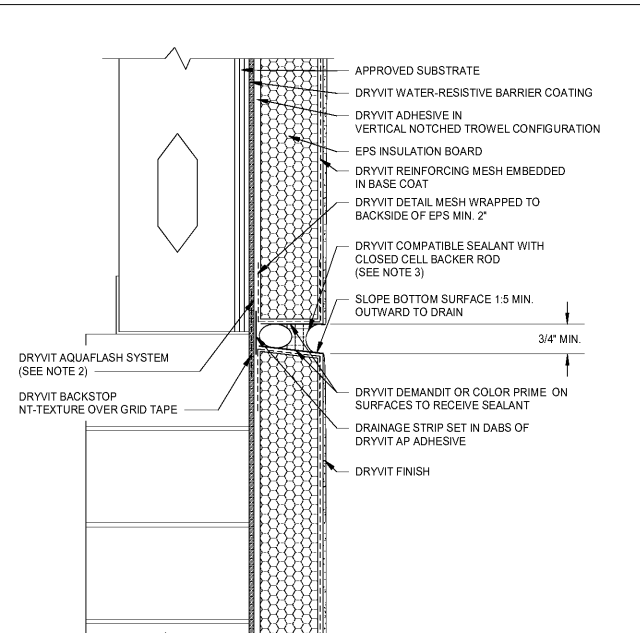


OUTSULATION@PLUS MD SYSTEM® EPS PREPARATION AT WALL PENETRATIONS

**NOTE:**

1. DRYVIT RECOMMENDS THAT GROUND FLOOR APPLICATIONS AND ALL FACADES EXPOSED TO NORMAL STRESS, HIGH TRAFFIC, OR DELIBERATE IMPACT HAVE THE BASE COAT REINFORCED WITH PANZER MESH PRIOR TO STANDARD OR STANDARD PLUS MESH LOCATION OF HIGH IMPACT ZONES SHOULD BE INDICATED ON CONTRACT DRAWINGS.
2. LOCATE INSULATION BOARDS SUCH THAT BOARD EDGES DO NOT ALIGN WITH CORNERS OF PENETRATION.
3. APPLY A PIECE OF 9 1/2" X 12" DETAIL REINFORCING MESH DIAGONALLY AT EACH CORNER.

### OPMD 0.0.19

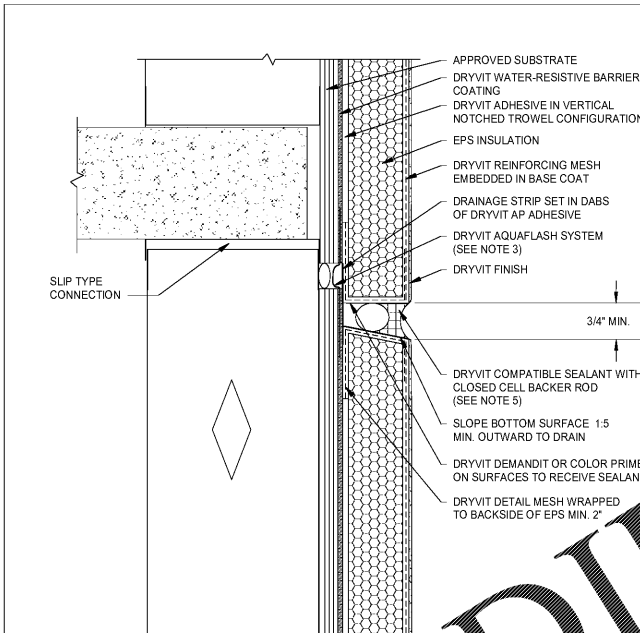


OUTSULATION@PLUS MD SYSTEM® HORIZONTAL JOINT - SUBSTRATE CHANGE

**NOTE:**

1. DRYVIT RECOMMENDS THAT GROUND FLOOR APPLICATIONS AND ALL FACADES EXPOSED TO NORMAL STRESS, HIGH TRAFFIC, OR DELIBERATE IMPACT HAVE THE BASE COAT REINFORCED WITH PANZER MESH PRIOR TO STANDARD OR STANDARD PLUS MESH LOCATION OF HIGH IMPACT ZONES SHOULD BE INDICATED ON CONTRACT DRAWINGS.
2. DRYVIT FLASHING TAPE SURFACE CONDITIONER AND DRYVIT FLASHING TAPE MAY BE USED IN LIEU OF DRYVIT AQUAFASH SYSTEM OVER PREPARED JOINT AT CHANGE IN SUBSTRATE.
3. SEALANT SHALL NOT BE IN DIRECT CONTACT WITH ASPHALTIC ADHESIVE ON DRYVIT FLASHING TAPE. COVER DRYVIT FLASHING TAPE LAPS WITH POLYETHYLENE TAPE OR BACKER ROD.

### OPMD 0.0.20

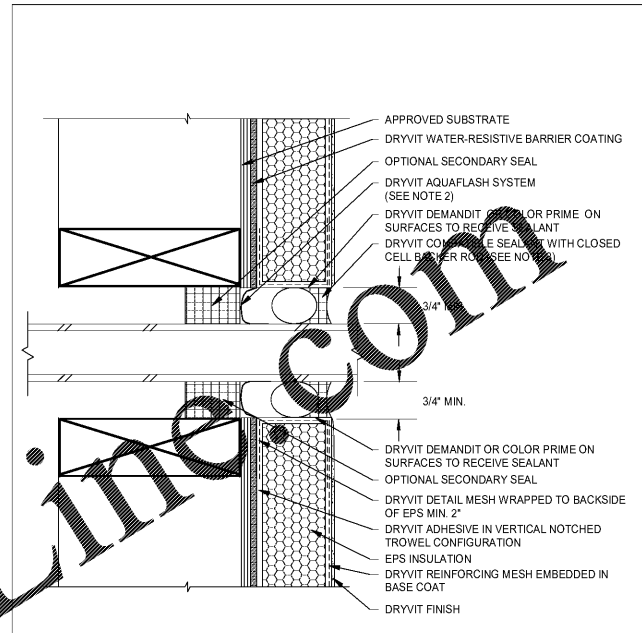


OUTSULATION@PLUS MD SYSTEM® HORIZONTAL SLIP JOINT

**NOTE:**

1. DRYVIT RECOMMENDS THAT GROUND FLOOR APPLICATIONS AND ALL FACADES EXPOSED TO NORMAL STRESS, HIGH TRAFFIC, OR DELIBERATE IMPACT HAVE THE BASE COAT REINFORCED WITH PANZER MESH PRIOR TO STANDARD OR STANDARD PLUS MESH LOCATION OF HIGH IMPACT ZONES SHOULD BE INDICATED ON CONTRACT DRAWINGS.
2. EXPANSION JOINT IN THE OUTSULATION@PLUS MD SYSTEM IS NECESSARY WHERE SIGNIFICANT DIFFERENTIAL MOVEMENT IS EXPECTED AT FLOOR LINE.
3. DRYVIT FLASHING TAPE SURFACE CONDITIONER AND DRYVIT FLASHING TAPE MAY BE USED IN LIEU OF DRYVIT AQUAFASH SYSTEM OVER PREPARED JOINT WITHIN 2" OF BREAK IN SHEATHING.
4. LOCATE EXTERNAL SEALANT JOINT WITHIN 2" OF BREAK IN SHEATHING.
5. SEALANT SHALL NOT BE IN DIRECT CONTACT WITH ASPHALTIC ADHESIVE ON DRYVIT FLASHING TAPE. COVER DRYVIT FLASHING TAPE LAPS WITH POLYETHYLENE TAPE OR BACKER ROD.

### OPMD 0.0.24



OUTSULATION@PLUS MD SYSTEM® PENETRATIONS

**NOTE:**

1. DRYVIT RECOMMENDS THAT GROUND FLOOR APPLICATIONS AND ALL FACADES EXPOSED TO NORMAL STRESS, HIGH TRAFFIC, OR DELIBERATE IMPACT HAVE THE BASE COAT REINFORCED WITH PANZER MESH PRIOR TO STANDARD OR STANDARD PLUS MESH LOCATION OF HIGH IMPACT ZONES SHOULD BE INDICATED ON CONTRACT DRAWINGS.
2. DRYVIT FLASHING TAPE SURFACE CONDITIONER AND DRYVIT FLASHING TAPE MAY BE USED IN LIEU OF DRYVIT AQUAFASH SYSTEM OVER PREPARED JOINT AT CHANGE IN SUBSTRATE.
3. SEALANT SHALL NOT BE IN DIRECT CONTACT WITH ASPHALTIC ADHESIVE ON DRYVIT FLASHING TAPE. COVER DRYVIT FLASHING TAPE LAPS WITH POLYETHYLENE TAPE OR BACKER ROD.

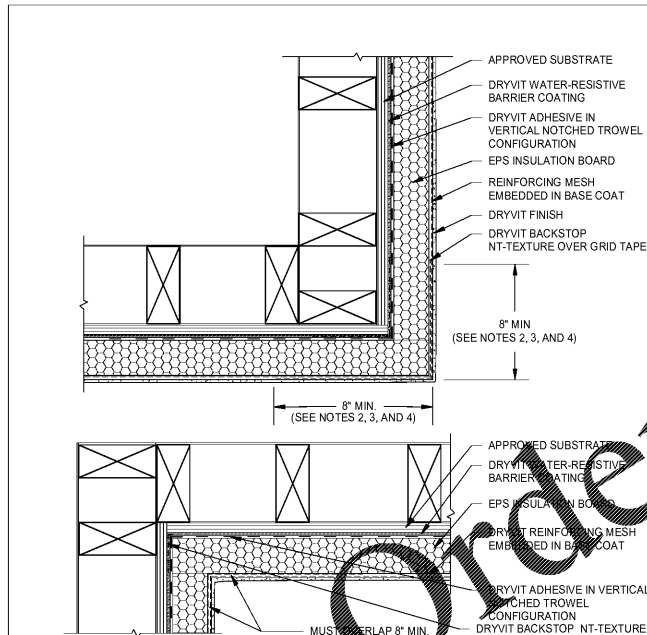
1 EPS PREPARATION AT WALL PENETRATIONS 12' = 1'-0"

2 HORIZONTAL JOINT - SUBSTRATE CHANGE 12' = 1'-0"

3 HORIZONTAL SLIP JOINT 12' = 1'-0"

4 PENETRATIONS 12' = 1'-0"

### OPMD 0.0.17

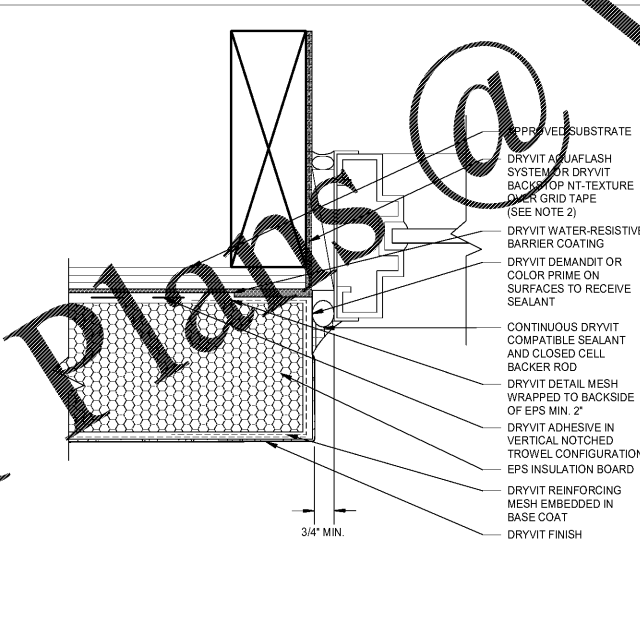


OUTSULATION@PLUS MD SYSTEM® INSIDE/OUTSIDE CORNERS

**NOTE:**

1. DRYVIT RECOMMENDS THAT GROUND FLOOR APPLICATIONS AND ALL FACADES EXPOSED TO NORMAL STRESS, HIGH TRAFFIC, OR DELIBERATE IMPACT HAVE THE BASE COAT REINFORCED WITH PANZER MESH PRIOR TO STANDARD OR STANDARD PLUS MESH LOCATION OF HIGH IMPACT ZONES SHOULD BE INDICATED ON CONTRACT DRAWINGS.
2. DOUBLE WRAP OUTSIDE CORNERS WITH REINFORCING MESH OR USE CORNER MESH.
3. DO NOT LAP REINFORCING MESH WITHIN 8" OF A CORNER.
4. OUTSIDE BOARD EDGES SHALL BE OFFSET

### OPMD 0.0.11

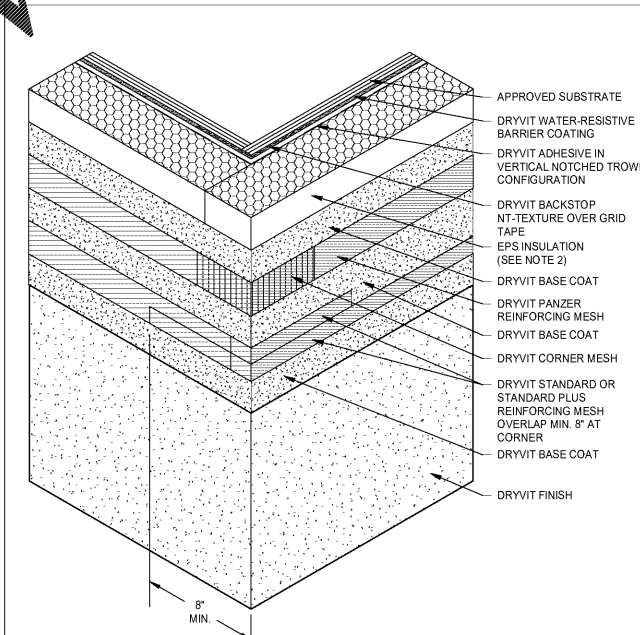


OUTSULATION@PLUS MD SYSTEM® JAMB

**NOTE:**

1. DRYVIT RECOMMENDS THAT GROUND FLOOR APPLICATIONS AND ALL FACADES EXPOSED TO ABNORMAL STRESS, HIGH TRAFFIC, OR DELIBERATE IMPACT HAVE THE BASE COAT REINFORCED WITH PANZER MESH PRIOR TO STANDARD OR STANDARD PLUS MESH LOCATION OF HIGH IMPACT ZONES SHOULD BE INDICATED ON CONTRACT DRAWINGS.
2. DRYVIT FLASHING TAPE SURFACE CONDITIONER AND DRYVIT FLASHING TAPE MAY BE USED IN LIEU OF DRYVIT AQUAFASH SYSTEM.

### OPMD 0.0.18



OUTSULATION@PLUS MD SYSTEM® OUTSIDE CORNER - HIGH IMPACT

**NOTE:**

1. DRYVIT RECOMMENDS THAT GROUND FLOOR APPLICATIONS AND ALL FACADES EXPOSED TO ABNORMAL STRESS, HIGH TRAFFIC, OR DELIBERATE IMPACT HAVE THE BASE COAT REINFORCED WITH PANZER MESH PRIOR TO STANDARD OR STANDARD PLUS MESH LOCATION OF HIGH IMPACT ZONES SHOULD BE INDICATED ON CONTRACT DRAWINGS.
2. OUTSIDE BOARD EDGES SHALL BE OFFSET

5 INSIDE/OUTSIDE CORNERS 12' = 1'-0"

6 JAMB 12' = 1'-0"

7 OUTSIDE CORNER - HIGH IMPACT 12' = 1'-0"

No.	Description	Date

DISCLAIMER: PC is providing, by agreement with certain parties, materials review electronically. The parties recognize that data, plans, specifications, reports, drawings, and other documents are subject to modification, deletion, or replacement without notice. All electronic documents are subject to verification, alteration, change, transmission, conversion, media degradation, software error or human alteration. Accordingly, all such documents are provided as a guide only and should not be used for legal purposes only and not as an end product or as a record document. Any reliance thereon is deemed to be solely the responsibility of the user. Strapped hard copies of the Architect's instruments of service are the only true documents of record.

**MEISTER COX ARCHITECTS**

INFO@MEISTERCOX.COM  
 PHONE: 610-375-1331 FAX: 610-375-4655  
 1522 PENN AVENUE WYOMISSING, PA 19310  
 WWW.MEISTERCOX.COM

TYPICAL EIFS DETAILS

HOLIDAY INN EXPRESS & SUITES

INTERSECTION OF HAYNES PLACE & LAMM RD.  
 WILSON, NC 27783

STATUS: BIDDING

PROJ. DATE: 06-07-19

PROJ. NO. 18-176

PRINTED: 6/7/2019 7:12:16 PM

DRAWN BY: RFF

CHECKED BY: TGC

SHEET NO. A702

SCALE: 1/2" = 1'-0"

