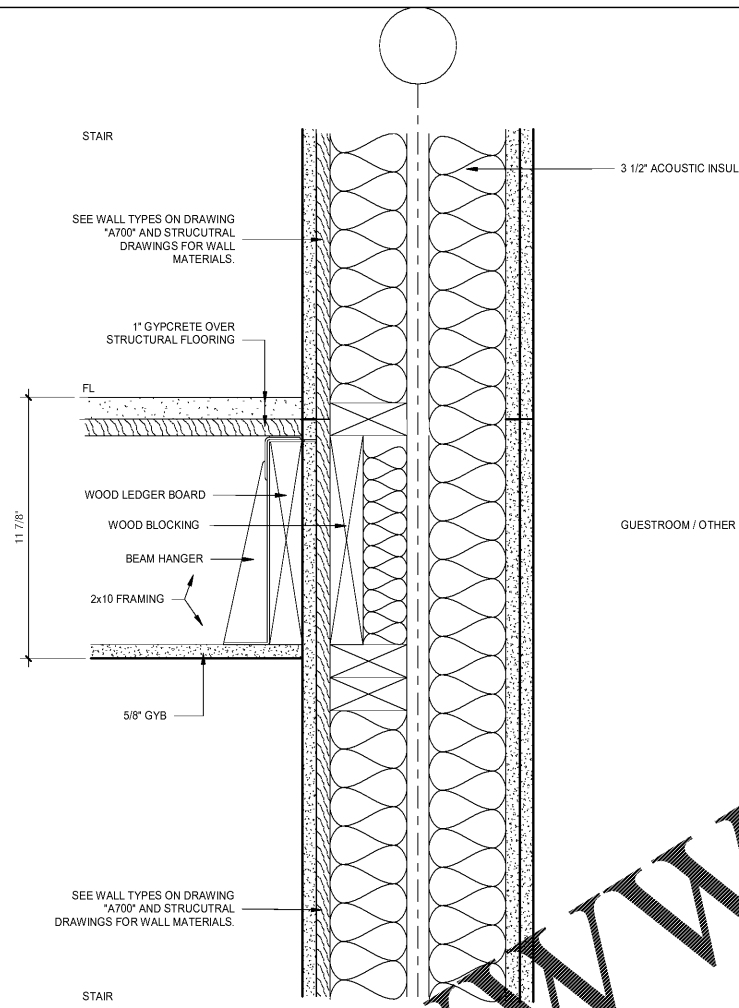
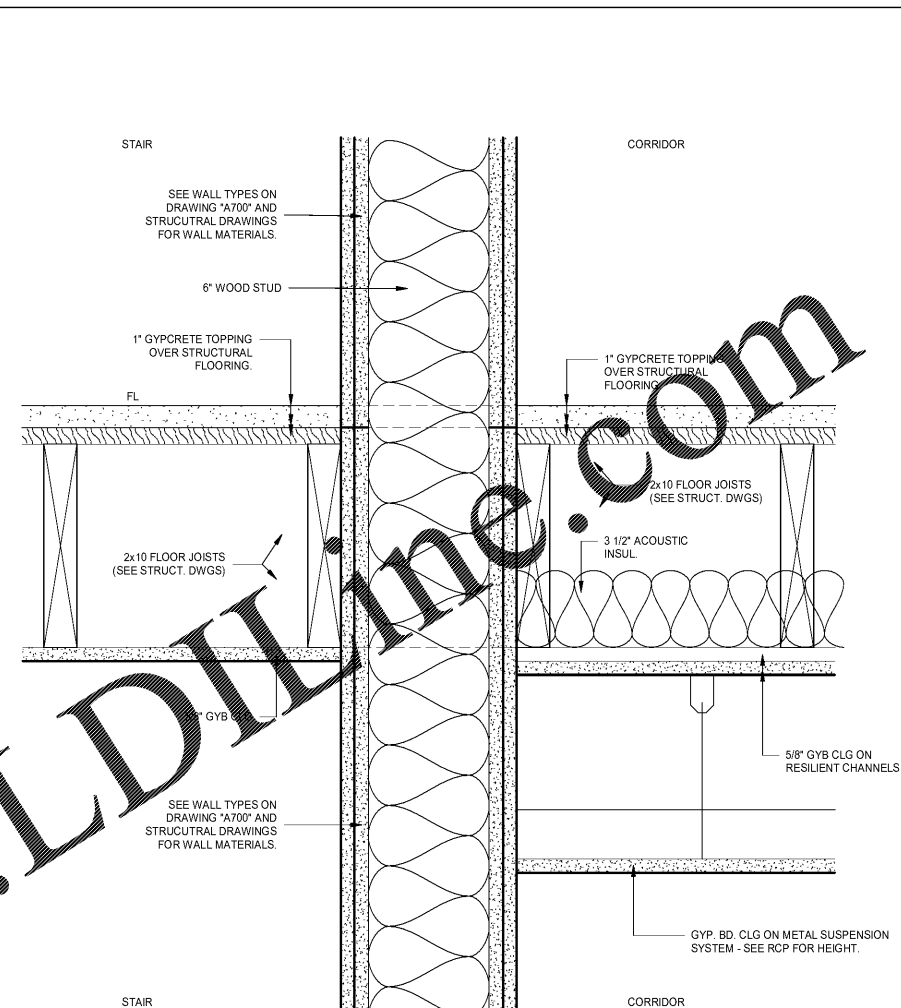


1 INTERIOR WALL/FLOOR TYPICAL STAIR
3" = 1'-0"

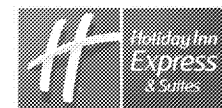


2 INTERIOR WALL/FLOOR TYPICAL STAIR LANDING
3" = 1'-0"



3 INTERIOR WALL/FLOOR TYPICAL STAIR/CORRIDOR
3" = 1'-0"

- CONSTRUCTION NOTES:**
- EIFS THICKNESS IS TYPICALLY 1 3/4" WHERE INDICATED ON EXTERIOR ELEVATION AS EIFS 2. ADJUST DETAIL FOR EIFS THICKNESS 3 1/4". SEE ALSO EIFS TRANSITION DETAILS FOR ADDITIONAL INFORMATION.
 - SEE WALL TYPE DETAILS FOR ADDITIONAL INFORMATION. STAIR AND ELEVATOR WALLS REQUIRE 2 HOUR RATED ASSEMBLIES.
 - EIFS SYSTEM SHALL BE INSTALLED WITH A MOISTURE DRAINAGE SYSTEM. SEE DRAWINGS A701 AND A702. SUBMIT MANUFACTURER INFORMATION WITH MOISTURE DRAINAGE DETAILS TO CODE OFFICIAL FOR REVIEW.
 - THIN BRICK CLADDING SHALL UTILIZE INTEGRAL DRAINAGE CHAMBER WITH THIN TECH AIR VENT AND FLASHING. REFER TO MANUFACTURER DETAILS FOR MORE INFORMATION.
 - USE OF BATT INSULATION OR LOOSE FILL INSULATION AT POOL IS PROHIBITED. USE MED DENSITY CLOSED CELL SPRAY FOAM INSULATION.



No.	Description	Date

DISCLAIMER: PC is providing, by agreement with certain parties, materials stored electronically. The parties recognize that data, plans, specifications, reports, drawings, and other documents are subject to modification, deletion, or replacement without notice. The parties agree that the use of electronic media (including but not limited to CAD documents) are subject to modification, deletion, or replacement without notice. The parties agree that the use of electronic media (including but not limited to CAD documents) are subject to modification, deletion, or replacement without notice. The parties agree that the use of electronic media (including but not limited to CAD documents) are subject to modification, deletion, or replacement without notice. The parties agree that the use of electronic media (including but not limited to CAD documents) are subject to modification, deletion, or replacement without notice.

MEISTER COX ARCHITECTS

INFO@MEISTER-COX.COM
 PHONE: 610-375-1331 FAX: 610-375-4655
 1522 PENN AVENUE WYOMISSING, PA 19310
 WWW.MEISTER-COX.COM



TYPICAL WALL/FLOOR DETAILS
 @ STAIRS

HOLIDAY INN EXPRESS & SUITES
 INTERSECTION OF HAYNES PLACE & LAMM RD.
 WILSON, NC 27893

STATUS:	BIDDING
PROJ. DATE:	06-07-19
PROJ. NO.:	18-176
PRINTED:	6/7/2019 7:11:56 PM
DRAWN BY:	Author
CHECKED BY:	Checker

SHEET NO.
A539
 SCALE: 3" = 1'-0"

Order Plans @

WWW.LDILLINE.COM