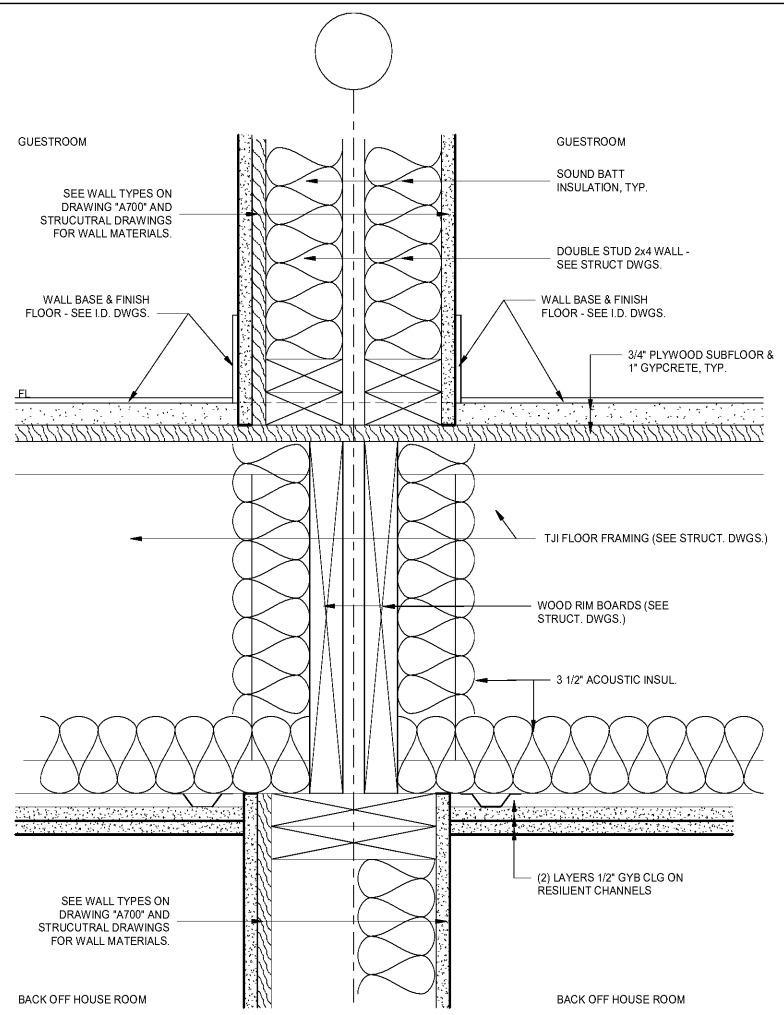
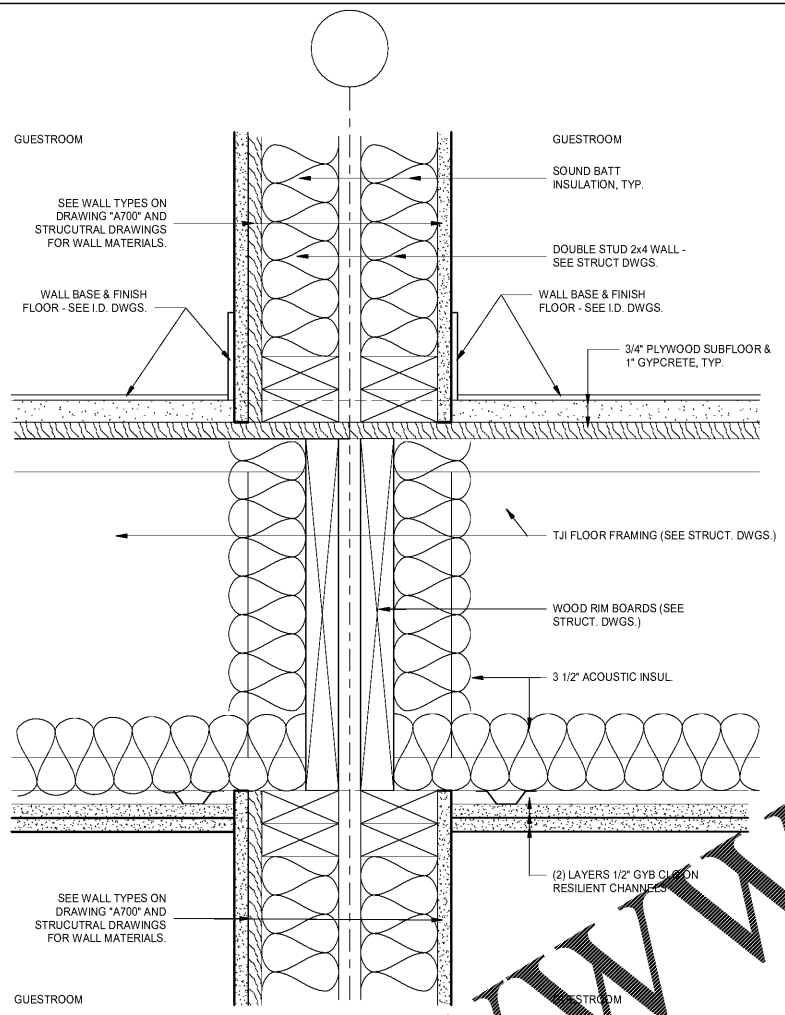


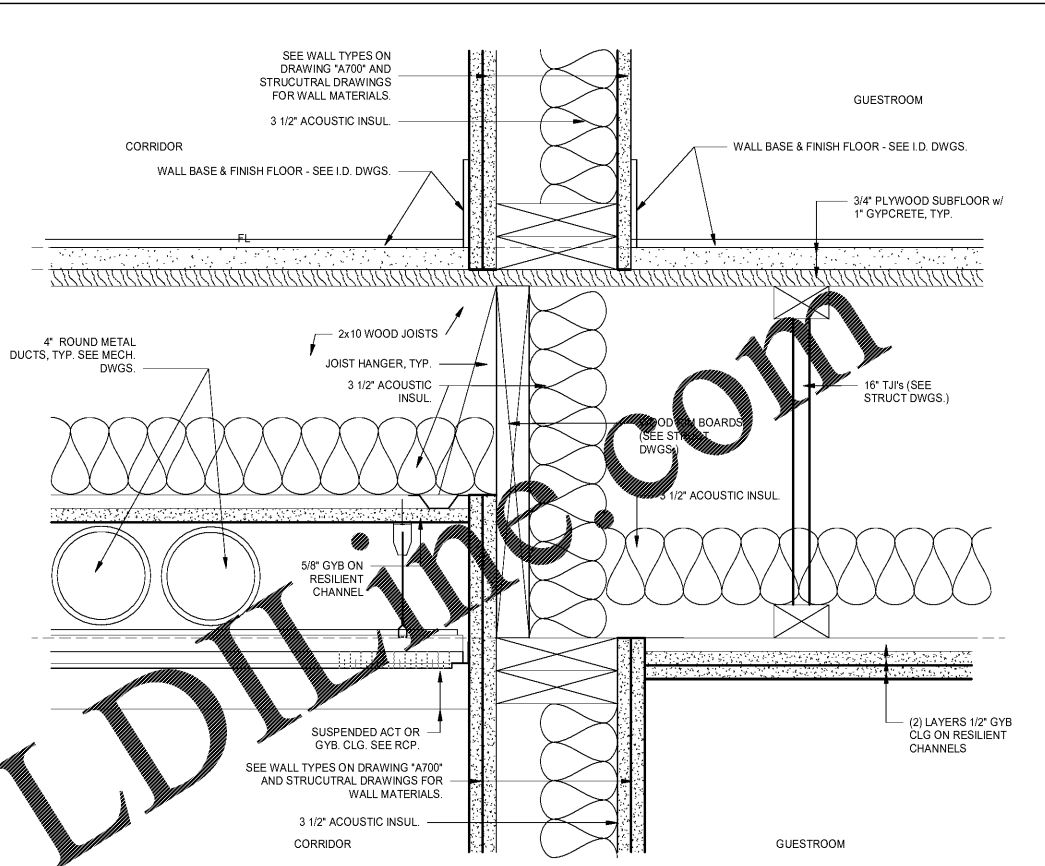
N:\Active Projects\Hospitality\3018 Holiday Inn Express - Wilson, NC\Drawings CAD-Rev\18-176.rvt



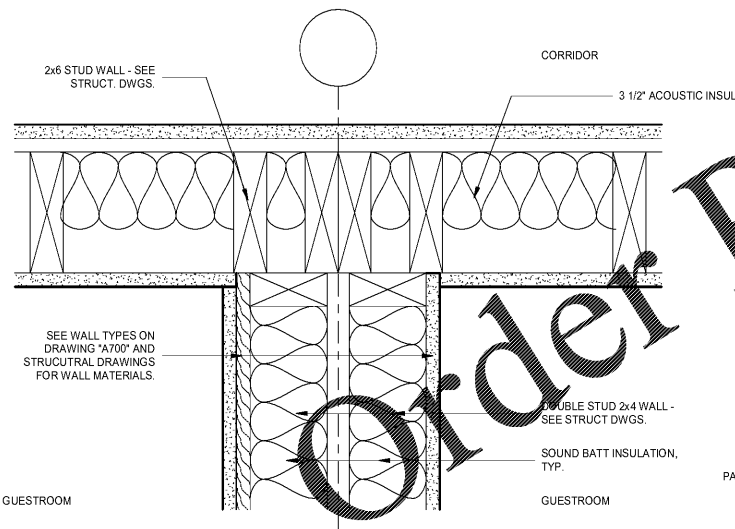
1 INTERIOR WALL/FLOOR TYPICAL GUESTROOM/BOH
3' = 1'-0"



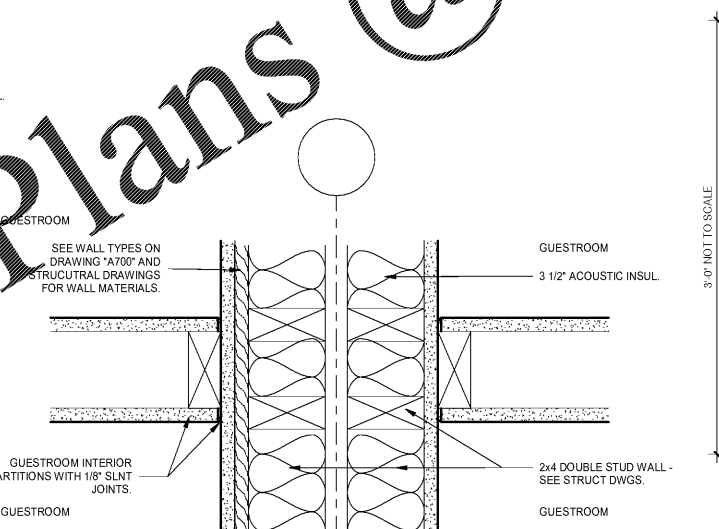
2 INTERIOR WALL/FLOOR TYPICAL GUESTROOM
3' = 1'-0"



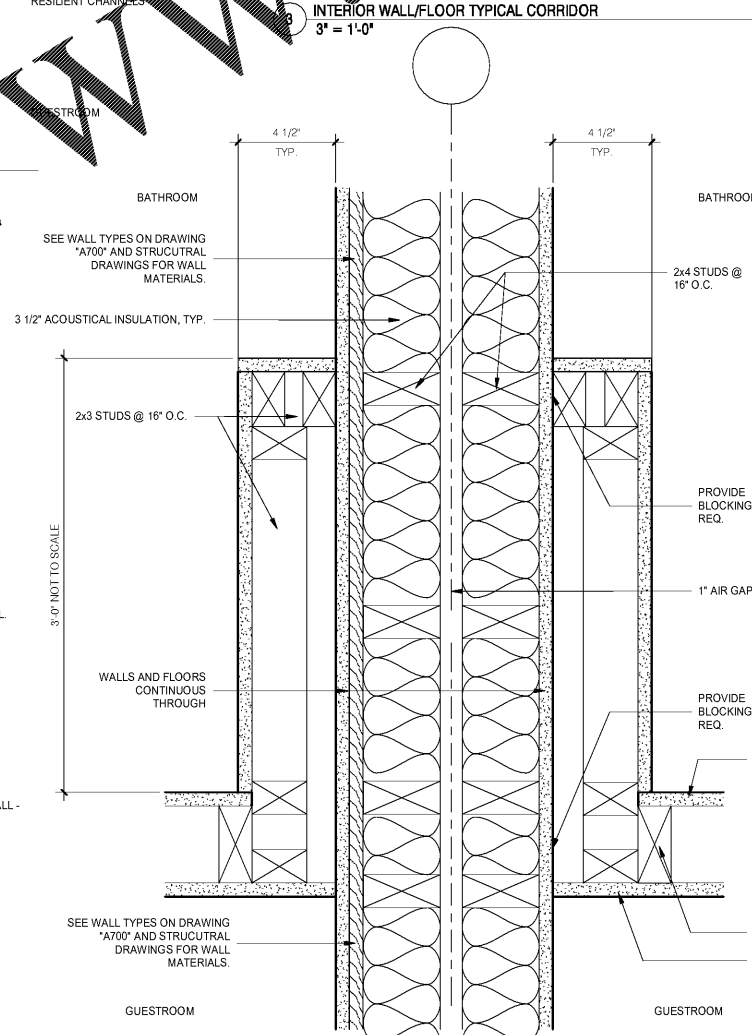
INTERIOR WALL/FLOOR TYPICAL CORRIDOR
3' = 1'-0"



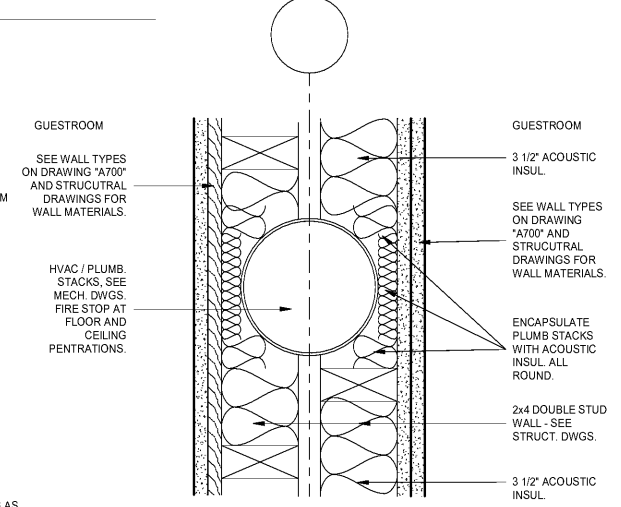
4 INTERIOR WALL TYPICAL GUESTROOM/CORRIDOR
3' = 1'-0"



5 INTERIOR WALL TYPICAL WALL INTERSECTION
3' = 1'-0"



6 INTERIOR WALL TYPICAL BATHROOM PACKOUT
3' = 1'-0"



7 INTERIOR WALL TYPICAL ACOUSTIC PIPE INSUL
3' = 1'-0"

- CONSTRUCTION NOTES:**
- EIFS THICKNESS IS TYPICALLY 1 3/4" WHERE INDICATED ON EXTERIOR ELEVATION AS EIFS 2. ADJUST DETAIL FOR EIFS THICKNESS 3 1/4". SEE ALSO EIFS TRANSITION DETAILS FOR ADDITIONAL INFORMATION.
 - SEE WALL TYPE DETAILS FOR ADDITIONAL INFORMATION. STAIR AND ELEVATOR WALLS REQUIRE 2 HOUR RATED ASSEMBLIES.
 - EIFS SYSTEM SHALL BE INSTALLED WITH A MOISTURE DRAINAGE SYSTEM. SEE DRAWING A701 AND A702. SUBMIT MANUFACTURER INFORMATION WITH MOISTURE DRAINAGE DETAILS TO CODE OFFICIAL FOR REVIEW.
 - THIN BRICK CLADDING SHALL UTILIZE INTEGRAL DRAINAGE CHAMBER WITH THIN TECH AIR VENT AND FLASHING. REFER TO MANUFACTURER DETAILS FOR MORE INFORMATION.
 - USE OF BATT INSULATION OR LOOSE FILL INSULATION AT POOLIS PROHIBITED. USE MED. DENSITY CLOSED CELL SPRAY FOAM INSULATION.

No.	Description	Date

MEISTER COX ARCHITECTS

INFO@MEISTER-COX.COM
PHONE: 610-375-1331 FAX: 610-375-4655
1522 PENN AVENUE WYOMISSING, PA 19310
WWW.MEISTER-COX.COM

TYPICAL WALL/FLOOR DETAILS @ INTERIOR WALLS

HOLIDAY INN EXPRESS & SUITES

INTERSECTION OF HAYNES PLACE & LAMM RD.
WILSON, NC 27893

STATUS:	BIDDING
PROJ. DATE:	06-07-19
PROJ. NO.:	18-176
PRINTED:	6/7/2019 7:11:53 PM
DRAWN BY:	RFF
CHECKED BY:	TGC
SHEET NO.:	A536
SCALE:	3" = 1'-0"

