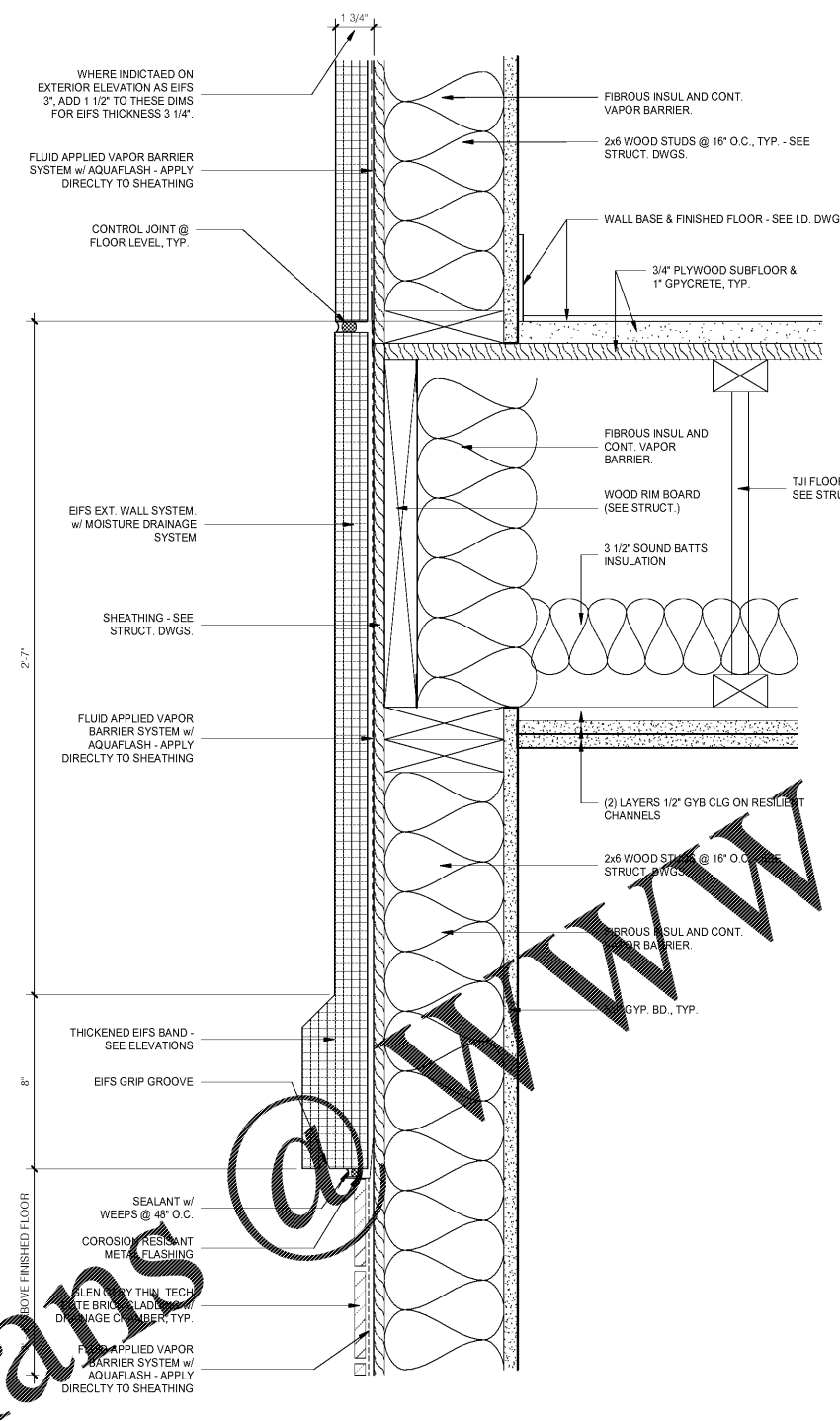
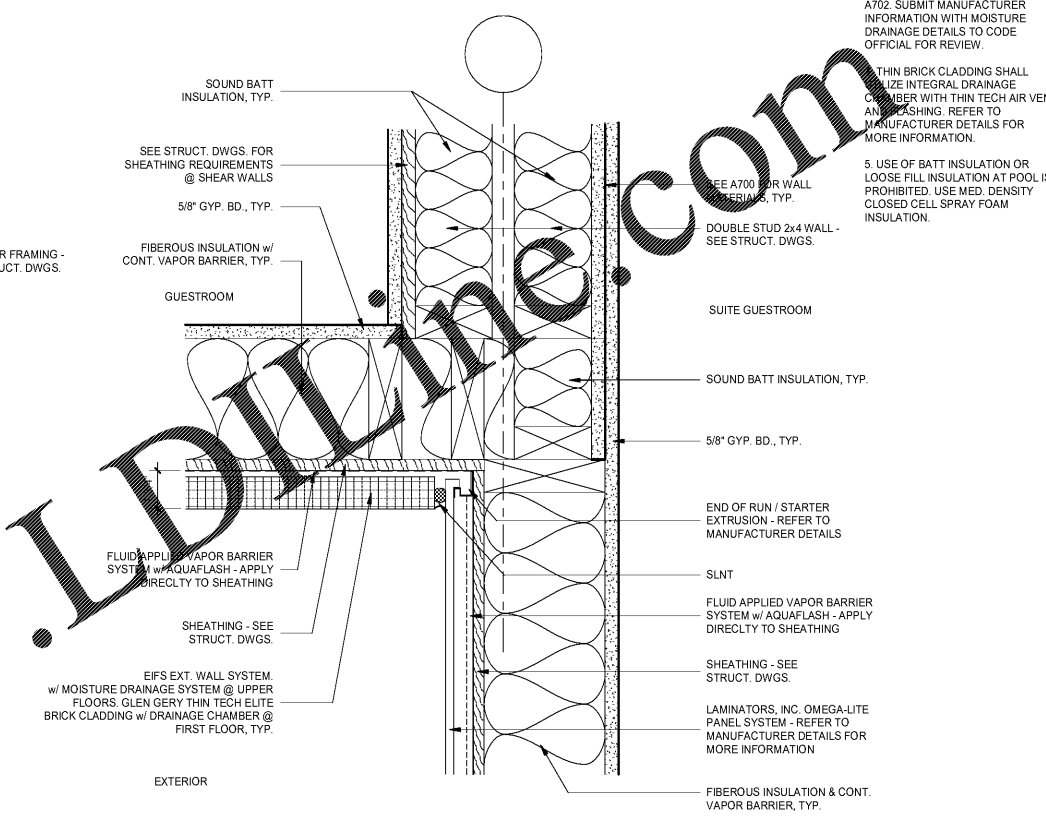


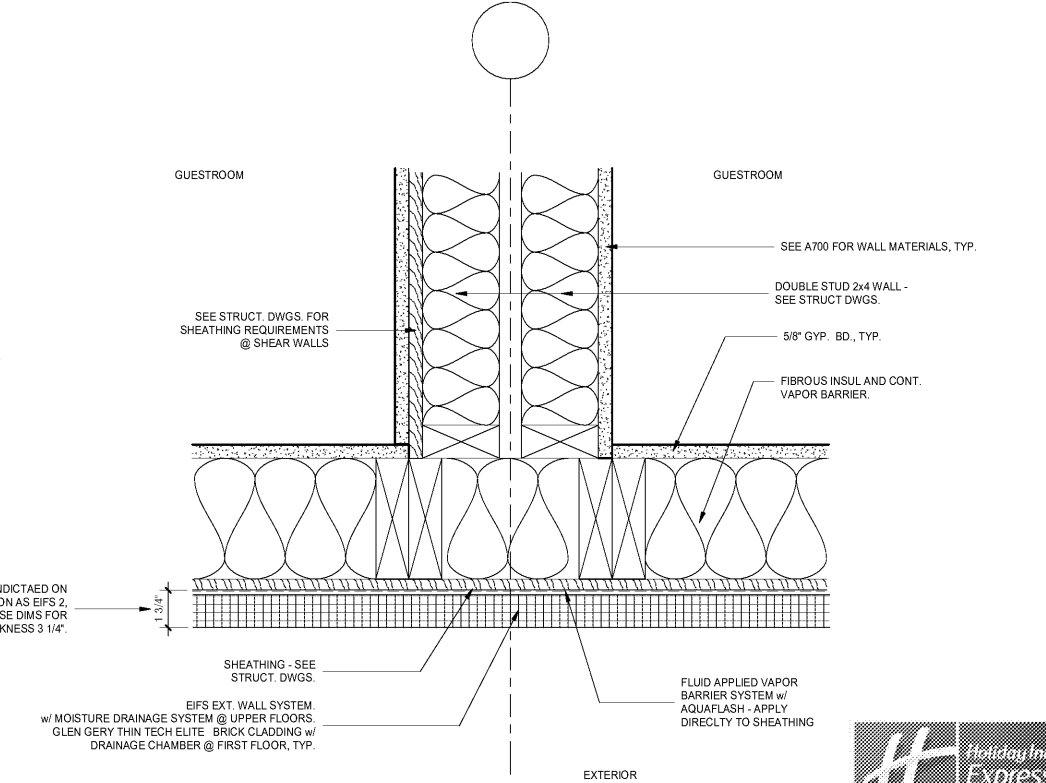
1 EXTERIOR WALL/FLOOR TYPICAL LOAD BEARING
3" = 1'-0"



2 EXTERIOR WALL/FLOOR TYPICAL NON-LOAD BEARING
3" = 1'-0"



4 EXTERIOR/INTERIOR WALL TYPICAL INTERSECTION AT OMEGA LITE
PANEL CORNER
3" = 1'-0"



5 EXTERIOR/INTERIOR WALL TYPICAL INTERSECTION
3" = 1'-0"

- CONSTRUCTION NOTES:**
- EIFS THICKNESS IS TYPICALLY 3/4" WHERE INDICATED ON EXTERIOR ELEVATION AS EIFS 2, ADJUST DETAIL FOR EIFS THICKNESS 3/4". SEE ALSO EIFS TRANSITION DETAILS FOR ADDITIONAL INFORMATION.
 - SEE WALL TYPE DETAILS FOR ADDITIONAL INFORMATION. STAIR AND ELEVATOR WALLS REQUIRE 2 HOUR RATED ASSEMBLIES.
 - EIFS SYSTEM SHALL BE INSTALLED WITH A MOISTURE DRAINAGE SYSTEM. SEE DRAWING A701 AND A702. SUBMIT MANUFACTURER INFORMATION WITH MOISTURE DRAINAGE DETAILS TO CODE OFFICIAL FOR REVIEW.
 - THIN BRICK CLADDING SHALL USE INTEGRAL DRAINAGE CHAMBER WITH THIN TECH AIR VENT AND FLASHING. REFER TO MANUFACTURER DETAILS FOR MORE INFORMATION.
 - USE OF BATT INSULATION OR LOOSE FILL INSULATION AT POOL IS PROHIBITED. USE MED. DENSITY CLOSED CELL SPRAY FOAM INSULATION.

No.	Description	Date

DISCLAIMER: MEISTER COX ARCHITECTS, PC is providing, by agreement with certain parties, materials (revised electronically). The parties recognize that data, plans, specifications, reports, drawings, and other documents (including but not necessarily limited to electronic media) are subject to modification, alteration, correction, transmission, conversion, media degradation, software error or human alteration. Accordingly, all such documents are provided as a guide only and not as a record document. Any reliance thereon is deemed to be the user's responsibility. MEISTER COX ARCHITECTS, PC does not warrant the accuracy of the information provided herein. Services are the only true documents of record.

MEISTER COX ARCHITECTS

INFO@MEISTER-COX.COM
 PHONE: 610-375-1331 FAX: 610-375-4655
 1522 PENN AVENUE WYOMISSING, PA 19310
 WWW.MEISTER-COX.COM

TYPICAL WALL/FLOOR DETAILS
 @ EXTERIOR WALLS

HOLIDAY INN EXPRESS & SUITES

INTERSECTION OF HAYNES PLACE & LAMM RD.
 WILSON, NC 27893

STATUS: BIDDING

PROJ. DATE: 06-07-19

PROJ. NO: 18-176

PRINTED: 6/7/2019 7:11:51 PM

DRAWN BY: RFF

CHECKED BY: TGC

SHEET NO. A535

SCALE: 3" = 1'-0"

Order Plans @ AWW

WWW.IDLINE.COM

