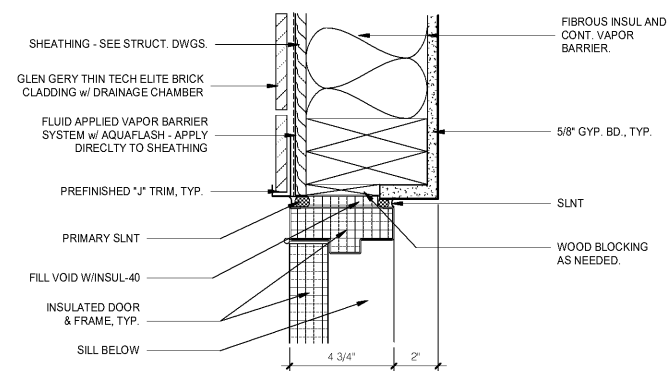
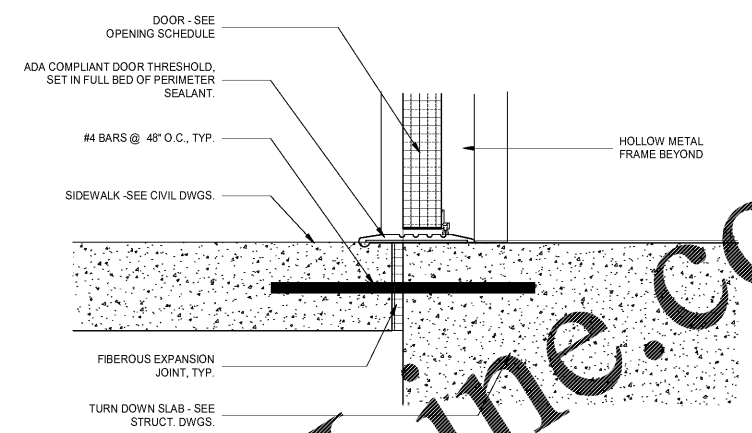


1 EXTERIOR DOOR TYPICAL HEAD
3' = 1'-0"



2 EXTERIOR DOOR TYPICAL JAMB
3' = 1'-0"



6 EXTERIOR DOOR TYPICAL SILL
3' = 1'-0"

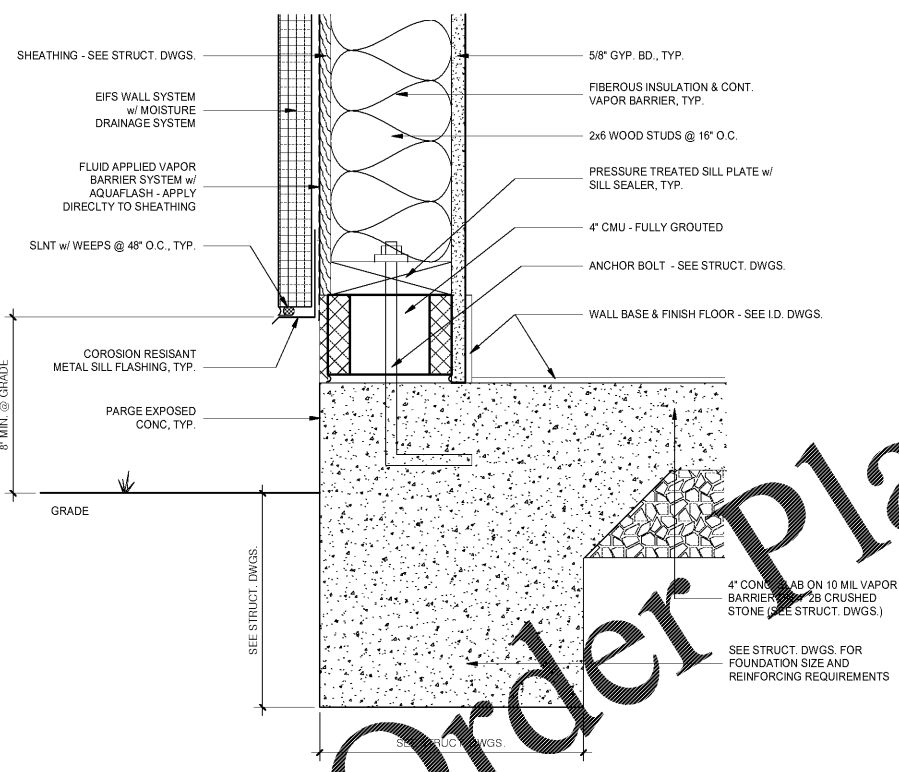
- CONSTRUCTION NOTES:**
- EIFS THICKNESS IS TYPICALLY 1 3/4" WHERE INDICATED ON EXTERIOR ELEVATION AS EIFS 2. ADJUST DETAIL FOR EIFS THICKNESS 3 1/4". SEE ALSO EIFS TRANSITION DETAILS FOR ADDITIONAL INFORMATION.
 - SEE WALL TYPE DETAILS FOR ADDITIONAL INFORMATION. STAIR AND ELEVATOR WALLS REQUIRE 2 HOUR RATED ASSEMBLIES.
 - EIFS SYSTEM SHALL BE INSTALLED WITH A MOISTURE DRAINAGE SYSTEM. SEE DRAWING A701 AND A702. SUBMIT MANUFACTURER INFORMATION WITH MOISTURE DRAINAGE DETAILS TO CODE OFFICIAL FOR REVIEW.
 - BRICK CLADDING SHALL UTILIZE INTEGRAL DRAINAGE CHAMBER WITH THIN TECH AIR VENT AND FLASHING. REFER TO MANUFACTURER DETAILS FOR MORE INFORMATION.
 - USE OF BATT INSULATION OR LOOSE FILL INSULATION AT POOL IS PROHIBITED. USE MED DENSITY CLOSED CELL SPRAY FOAM INSULATION.

No.	Description	Date

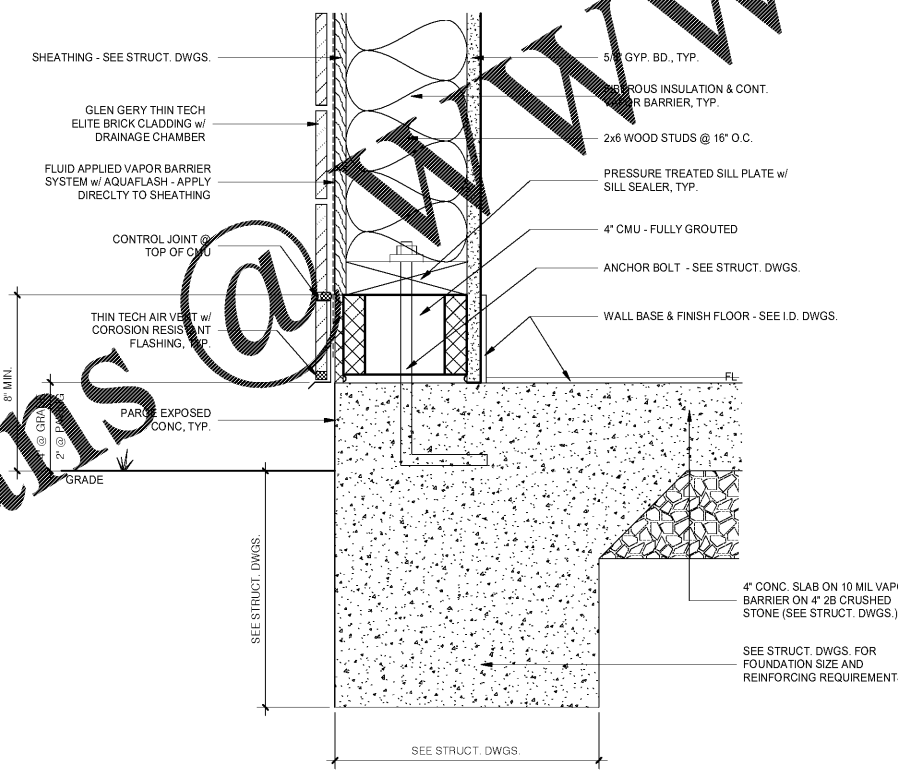
DISCLAIMER: PC is providing, by agreement with certain parties, materials stored electronically. The parties recognize that data, plans, specifications, reports, drawings, and other documents are subject to modification, alteration, deletion, transmission, conversion, media degradation, software error or human alteration. Accordingly, all such documents are deemed to be the original documents for all purposes only and not as an end product or as a record document. Any reliance thereon is deemed to be the user's responsibility. Stripped hard copies of the Architect's instruments of service are the only true documents of record.

MEISTER-COX ARCHITECTS

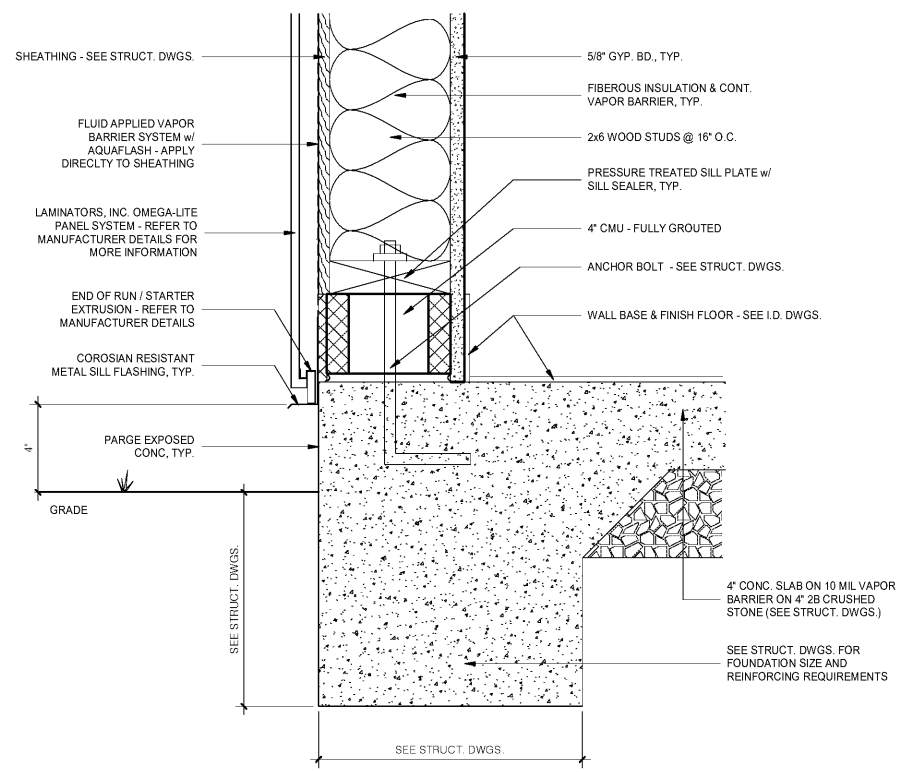
INFO@MEISTER-COX.COM
 PHONE: 610-375-1331 FAX: 610-375-4665
 1522 PENN AVENUE WYOMISSING, PA 19310
 WWW.MEISTER-COX.COM



3 EXTERIOR WALL BASE @ EIFS
3' = 1'-0"



4 TYP. EXTERIOR WALL BASE @ THIN BRICK
3' = 1'-0"



5 EXTERIOR WALL BASE @ METAL PANELS
3' = 1'-0"

TYPICAL EXTERIOR WALL BASE & DOOR DETAILS

HOLIDAY INN EXPRESS & SUITES

INTERSECTION OF HAYNES PLACE & LAMM RD.
WILSON, NC 27783

STATUS:	BIDDING
PROJ. DATE:	06-07-19
PROJ. NO.:	18-176
PRINTED:	6/7/2019 7:11:48 PM
DRAWN BY:	RFF
CHECKED BY:	TGC
SHEET NO.:	A532
SCALE:	3" = 1'-0"

