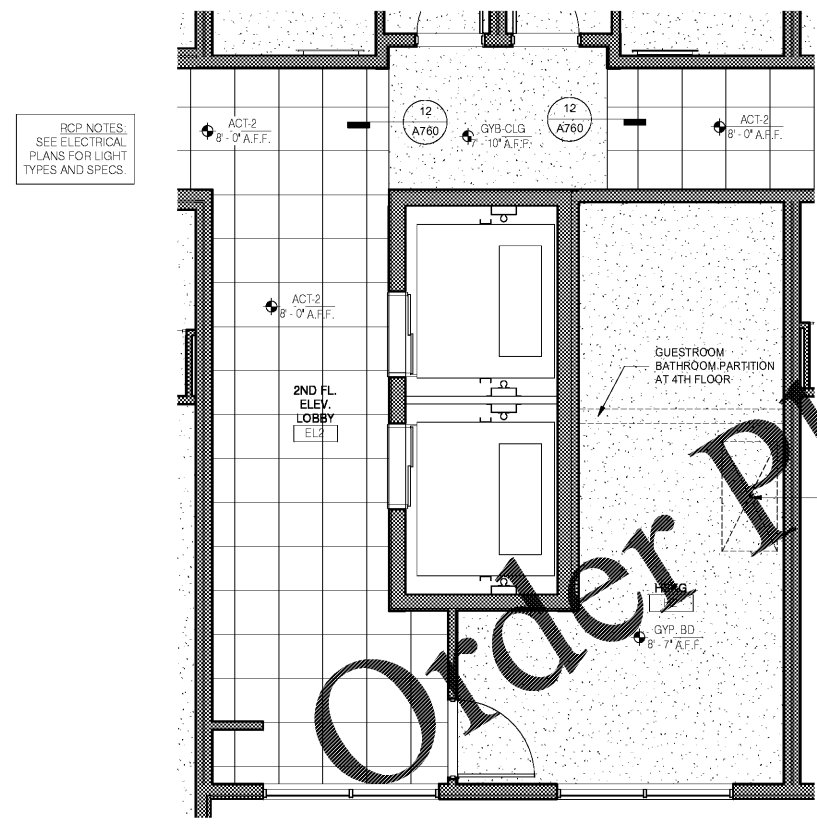
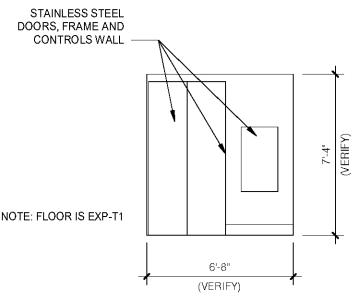


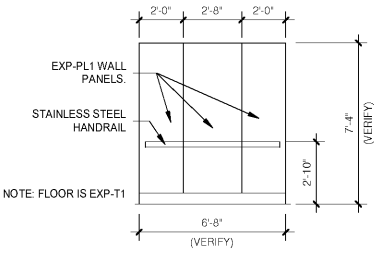
1 LEVEL 1 ELEVATOR LOBBY RCP
1/4" = 1'-0"



2 LEVEL 2 ELEVATOR LOBBY, TYP. LEVELS 2-4.
1/4" = 1'-0"

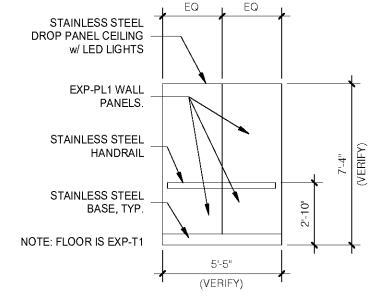


3 ELEVATOR CAB CONTROL WALL
1/4" = 1'-0"

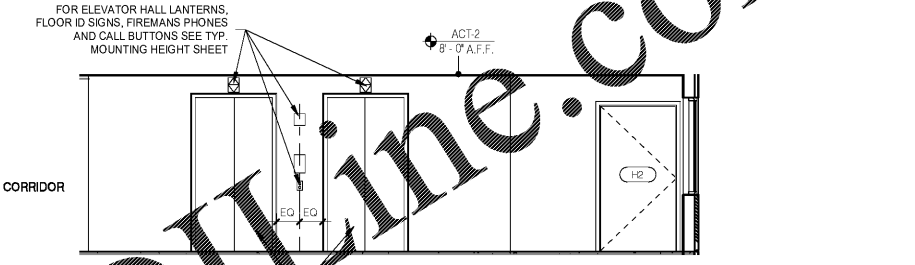


4 ELEVATOR CAB LEFT / RIGHT
1/4" = 1'-0"

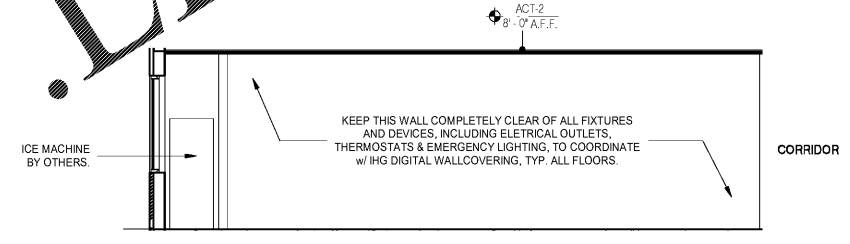
5 ELEVATOR CAB REAR
1/4" = 1'-0"



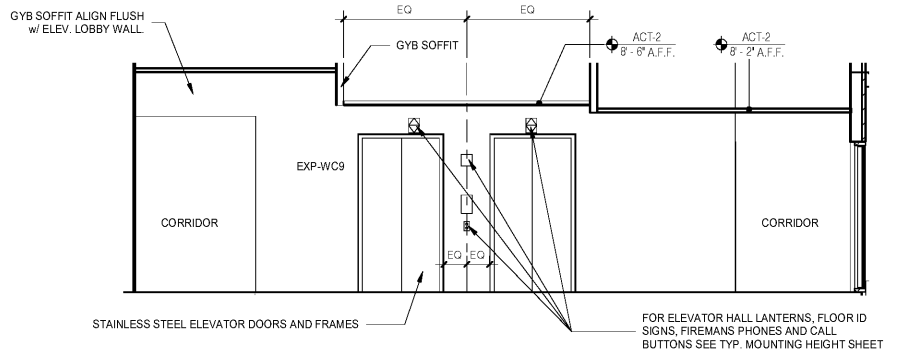
6 GUESTROOM CORRIDOR TYPICAL
1/4" = 1'-0"



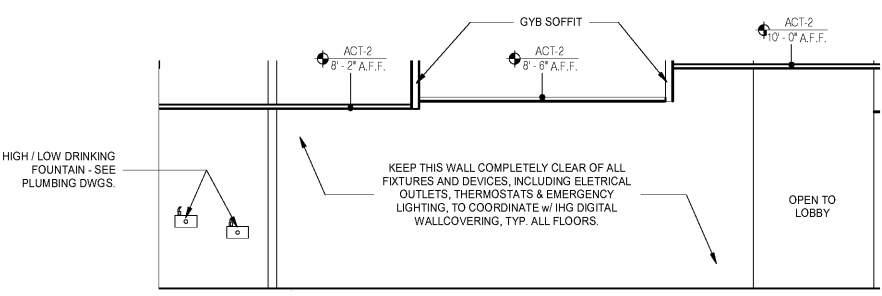
7 ELEVATOR LOBBY UPPER FLOORS
1/4" = 1'-0"



8 ELEVATOR LOBBY UPPER FLOORS BACK
1/4" = 1'-0"



9 ELEVATOR LOBBY FIRST LEVEL
1/4" = 1'-0"



10 ELEVATOR LOBBY LEVEL 1 BACK
1/4" = 1'-0"

No.	Description	Date

DISCLAIMER: PC is providing, by agreement with certain parties, materials derived electronically. The parties recognize that data, plans, specifications, reports, drawings, and other documents are subject to modification, alteration, correction, transmission, conversion, media degradation, software error or human alteration. Accordingly, all such documents are provided as a guide only and are not to be used for legal purposes only and not as an end product or as a record document. Any reliance thereon is deemed to be the user's responsibility. The user shall retain the original hard copies of the Architect's instruments of service as the only true documents of record.

MEISTER-COX ARCHITECTS
 INFO@MEISTER-COX.COM
 PHONE: 610-375-1331 FAX: 610-375-4665
 1522 PENN AVENUE WYOMISSING, PA 19380
 WWW.MEISTER-COX.COM

ELEV. LOBBY RCP AND CORRIDOR ELEVATIONS
 HOLIDAY INN EXPRESS & SUITES
 INTERSECTION OF HAYNES PLACE & LAMM RD.
 WILSON, NC 27893

STATUS: BIDDING
 PROJ. DATE: 06-07-19
 PROJ. NO: 18-176
 PRINTED: 6/7/2019 7:11:40 PM
 DRAWN BY: RFF
 CHECKED BY: TGC
 SHEET NO. A496
 SCALE: 1/4" = 1'-0"

