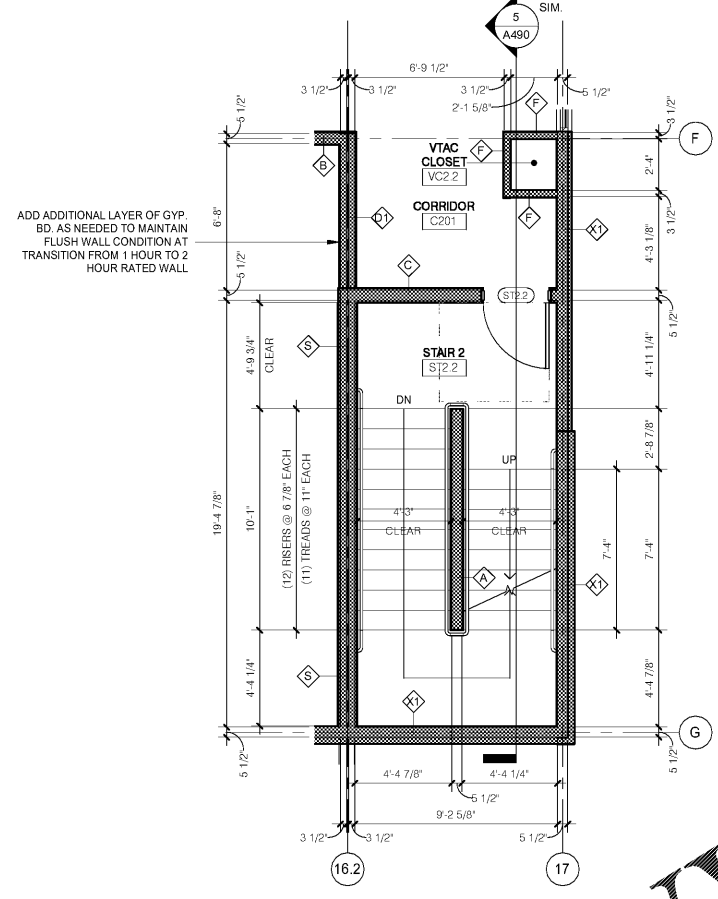
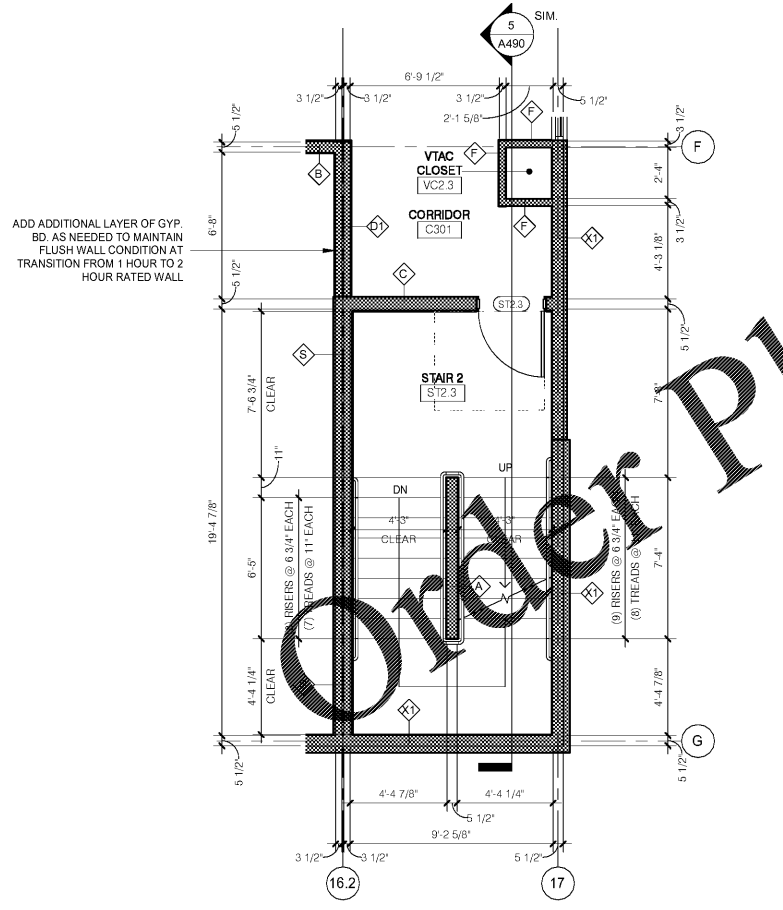


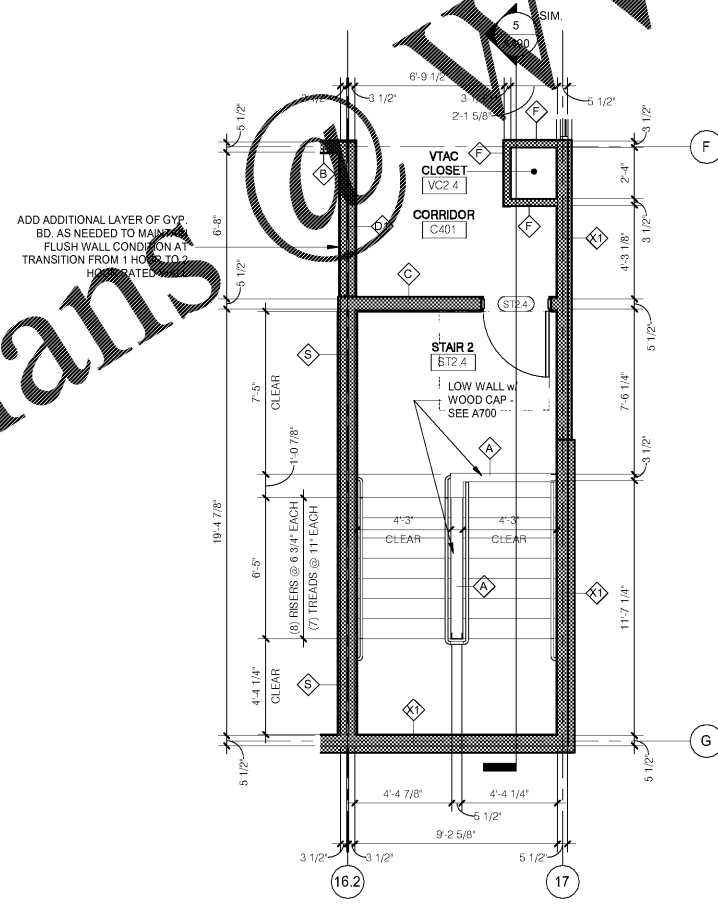
1 STAIR 2 PLAN LEVEL 1  
1/4" = 1'-0"



2 STAIR 2 PLAN LEVEL 2  
1/4" = 1'-0"



3 STAIR 2 PLAN LEVEL 3  
1/4" = 1'-0"



4 STAIR 2 PLAN LEVEL 4  
1/4" = 1'-0"

N:\Active Projects\hospitality\018 Holiday Inn Express - Wilson, NCDrawings CAD-Rev\18-176.rvt

WWW.LDILine.com

No.	Description	Date

MEISTER-COX ARCHITECTS  
 INFO@MEISTER-COX.COM  
 PHONE: 610-375-1331 FAX: 610-375-4555  
 1522 PENN AVENUE WYOMISSING, PA 19310  
 WWW.MEISTER-COX.COM

STAIR 2 PLANS

HOLIDAY INN EXPRESS & SUITES  
 INTERSECTION OF HAYNES PLACE & LAMM RD.  
 WILSON, NC 27893

STATUS:	BIDDING
PROJ. DATE:	06-07-19
PROJ. NO.:	18-176
PRINTED:	6/7/2019 7:11:37 PM
DRAWN BY:	RFF
CHECKED BY:	TGC
SHEET NO.:	A491
SCALE:	1/4" = 1'-0"

