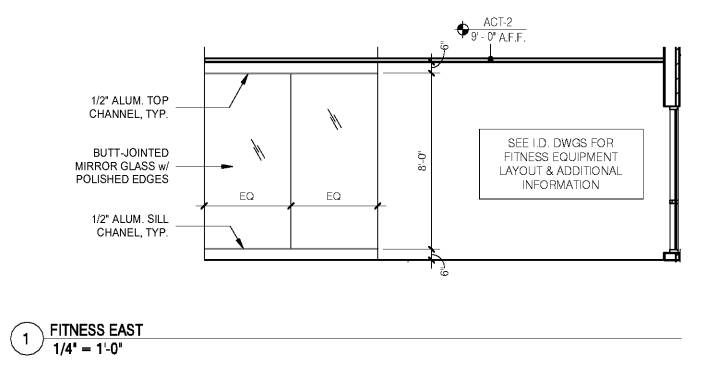
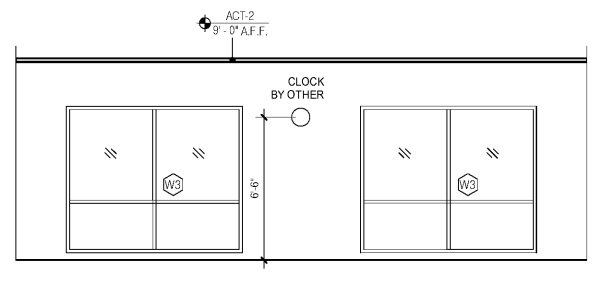


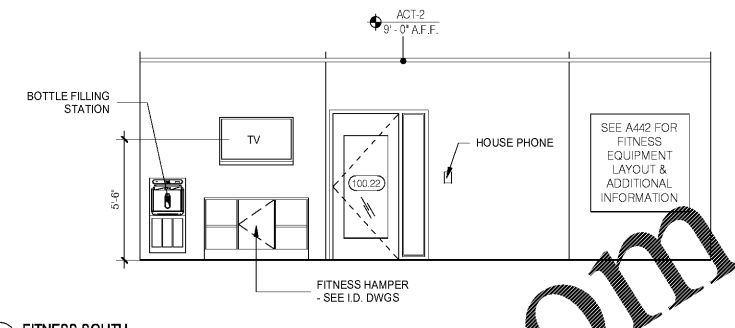
N:\Active Projects\hospitality\018-holiday Inn Express - Wilson, NC\Drawings CAD-Rev\18-176.rvt



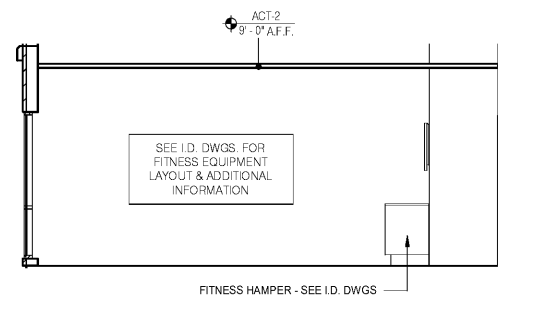
1 FITNESS EAST  
1/4" = 1'-0"



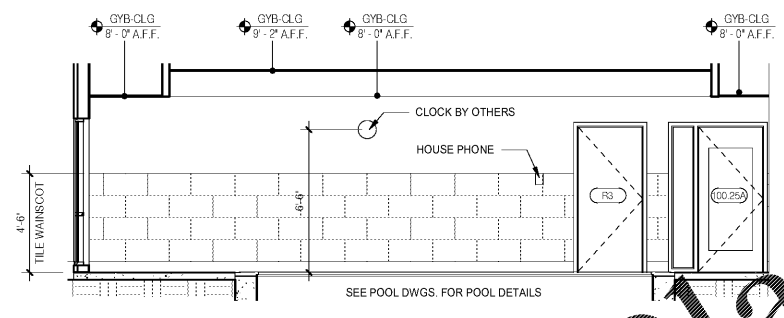
2 FITNESS NORTH  
1/4" = 1'-0"



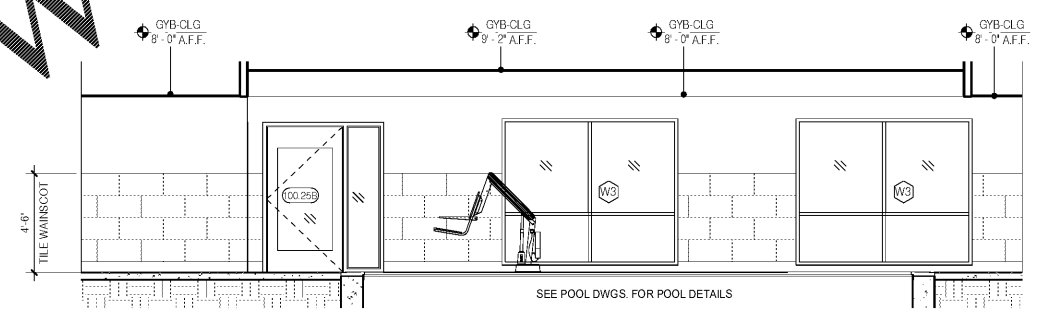
3 FITNESS SOUTH  
1/4" = 1'-0"



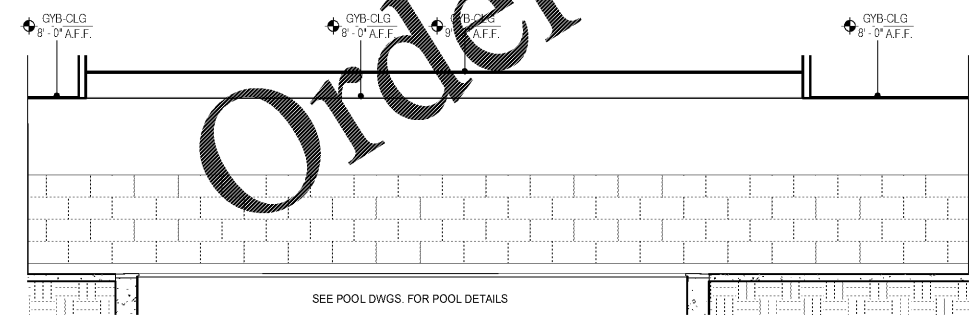
4 FITNESS WEST  
1/4" = 1'-0"



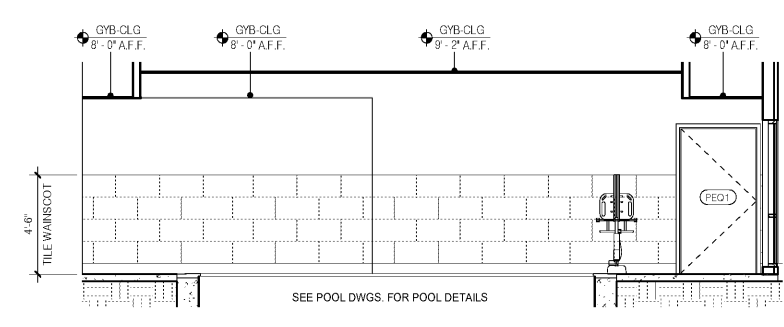
6 POOL WEST  
1/4" = 1'-0"



7 POOL NORTH  
1/4" = 1'-0"



8 POOL SOUTH  
1/4" = 1'-0"



5 POOL EAST  
1/4" = 1'-0"

Order Plans @ www.LDILine.com

No.	Description	Date

DISCLAIMER: This drawing is provided by agreement with certain parties, materials listed electronically. The parties recognize that data, plans, specifications, reports, drawings, and other documents are subject to modification, deletion, and/or removal without notice. All drawings are electronic media (including but not necessarily limited to CAD documents) and are subject to modification, deletion, and/or removal without notice. All drawings are electronic media (including but not necessarily limited to CAD documents) and are subject to modification, deletion, and/or removal without notice. All drawings are electronic media (including but not necessarily limited to CAD documents) and are subject to modification, deletion, and/or removal without notice. All drawings are electronic media (including but not necessarily limited to CAD documents) and are subject to modification, deletion, and/or removal without notice.

**MEISTER-COX ARCHITECTS**  
 INFO@MEISTER-COX.COM  
 PHONE: 610-375-1331 FAX: 610-375-4555  
 1522 PENN AVENUE WYOMISSING, PA 19310  
 WWW.MEISTER-COX.COM

**INTERIOR ELEVATIONS**  
 HOLIDAY INN EXPRESS & SUITES  
 INTERSECTION OF HAYNES PLACE & LAMM RD.  
 WILSON, NC 27893

STATUS:	BIDDING
PROJ. DATE:	06-07-19
PROJ. NO.	18-176
PRINTED:	6/7/2019 7:11:35 PM
DRAWN BY:	Author
CHECKED BY:	Checker
SHEET NO.	A451
SCALE:	1/4" = 1'-0"

