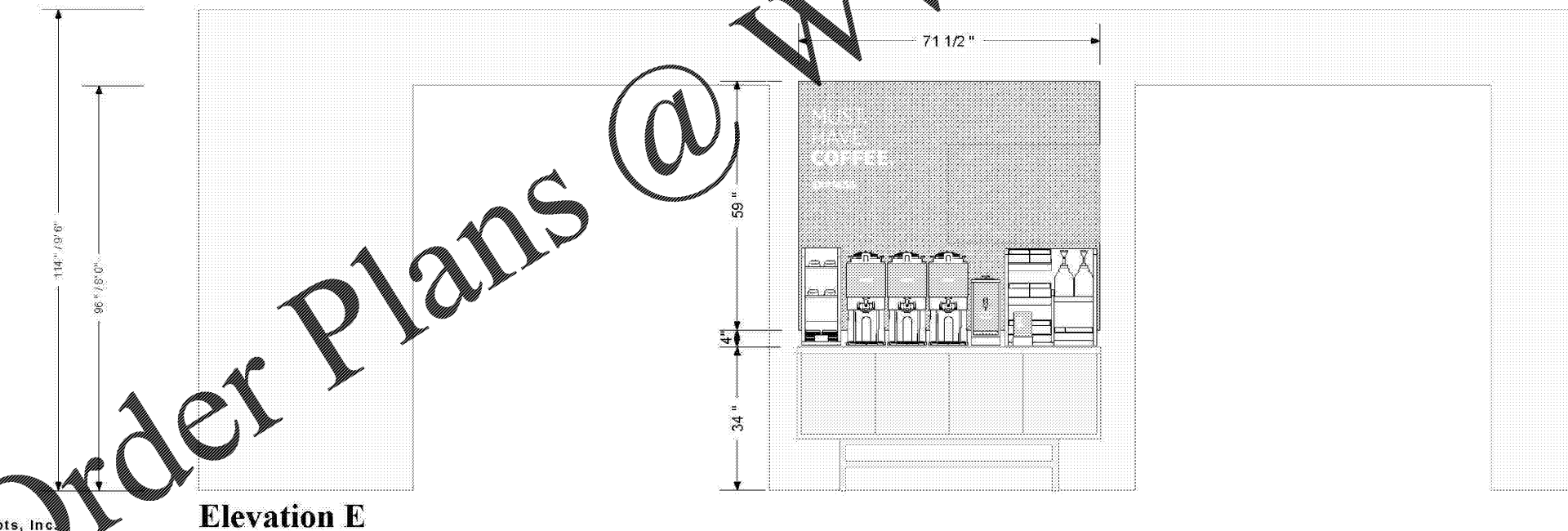
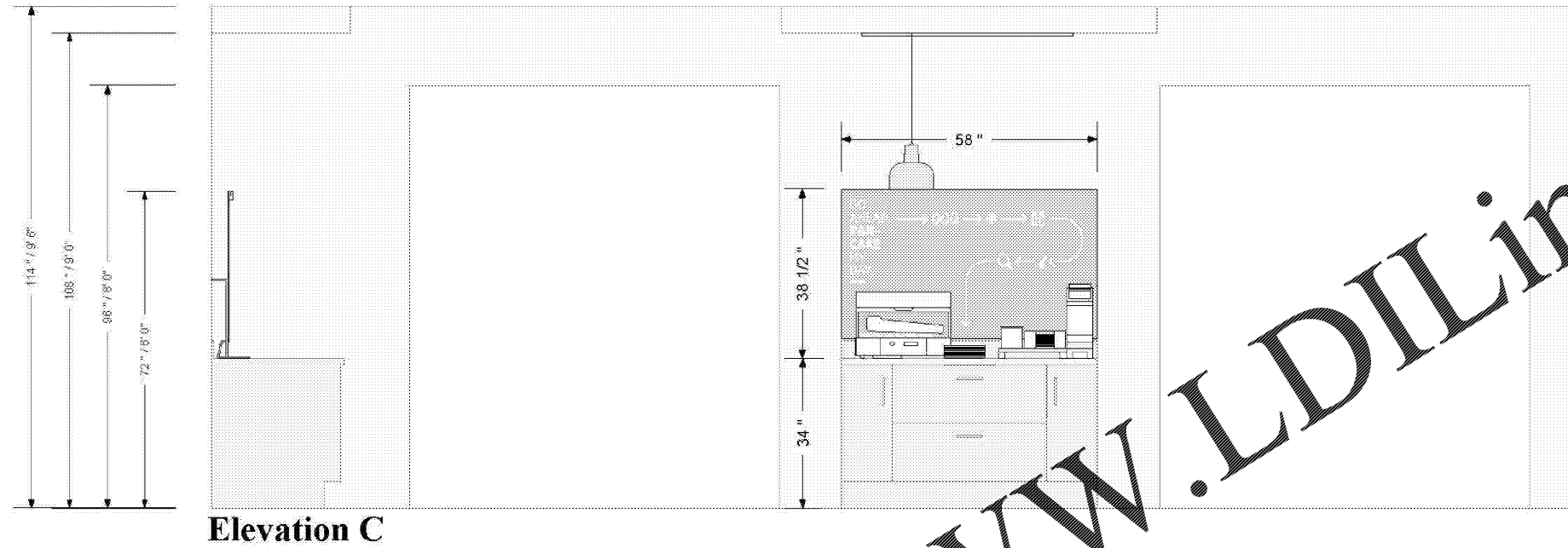


Holiday Inn Express - Breakfast Bar Existing Formula Blue - Pantry Door Left

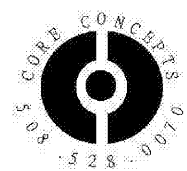
*Proposed Layout (for Concept Development only,
all dimensions and utilities must be verified.)*



NOTE:
THIS DRAWING IS ONLY TO BE USED AS A REFERENCE FOR THE BREAKFAST BAR EQUIPMENT. THE ARCHITECTURAL BACKGROUND IS GENERIC AND DOES NOT REFLECT THIS SPECIFIC PROJECT. SEE A440 FOR ENLARGED BREAKFAST AREA PLAN AND INFORMATION ON CASEWORK AND COUNTERTOPS RELATING TO THIS PROJECT.

Order Plans @

WWW.LDILine.com



Core Concepts, Inc.
305 Union Street
Franklin, MA 01828
508.528.0070 (v)
508.528.7722 (f)

3/8" = 1'
9/14/17 NZ

© 2017 Core Concepts, Inc. All rights reserved.
Local health and zoning codes should be checked before purchasing.

Page 3 of 5

No.	Description	Date

DISCLAIMER: PC is provided by agreement with certain parties, materials stored electronically. The parties recognize that data, plans, specifications, reports, drawings, and other documents may be subject to unauthorized alteration, deletion, modification, corruption, loss, damage, or destruction. All documents are subject to verification, alteration, correction, transmission, conversion, media degradation, software error or human alteration. Accordingly, all such documents are provided as a reference only and not as a record document. Any reliance thereon is deemed to be at the user's risk. This document is the property of the Architect and its instruments of service are the only true documents of record.

MEISTER-COX ARCHITECTS
INFO@MEISTER-COX.COM
PHONE: 610-375-1331 FAX: 610-375-4655
1522 PENN AVENUE WYOMISSING, PA 19310
WWW.MEISTER-COX.COM

BREAKFAST / COFFEE BAR ELEVATIONS
HOLIDAY INN EXPRESS & SUITES
INTERSECTION OF HAYNES PLACE & LAMM RD.
WILSON, NC 27783

STATUS: BIDDING
PROJ. DATE: 06-07-19
PROJ. NO: 18-176
PRINTED: 6/7/2019 7:11:30 PM
DRAWN BY: RFF
CHECKED BY: TGC
SHEET NO:
A440C
SCALE:



N:\Active Projects\hospitality\018 Holiday Inn Express - Wilson, NCDrawings CAD-Rev\18-176.rvt