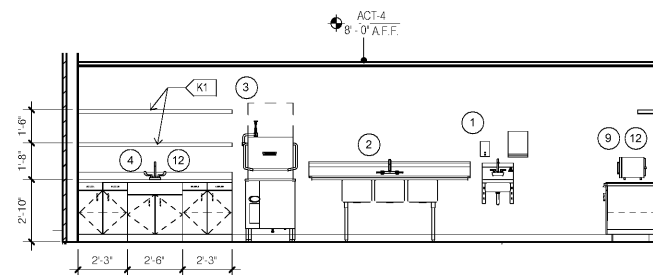
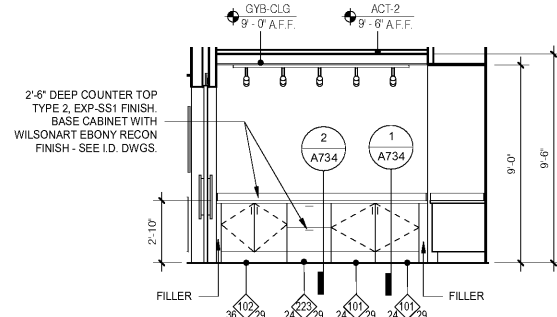


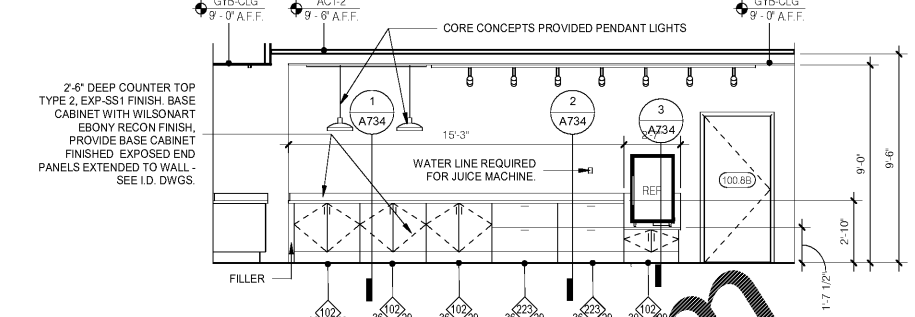
10 PANTRY NORTH
1/4" = 1'-0"



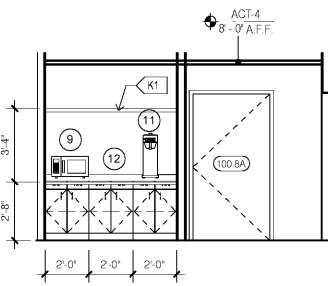
8 PANTRY WEST
1/4" = 1'-0"



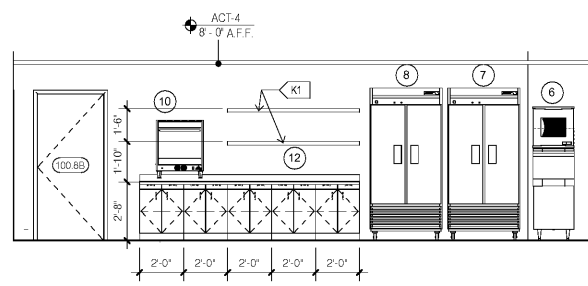
6 BREAKFAST NORTH
1/4" = 1'-0"



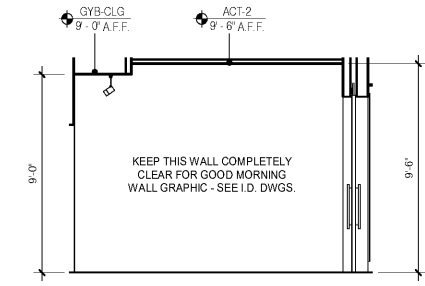
4 BREAKFAST WEST
1/4" = 1'-0"



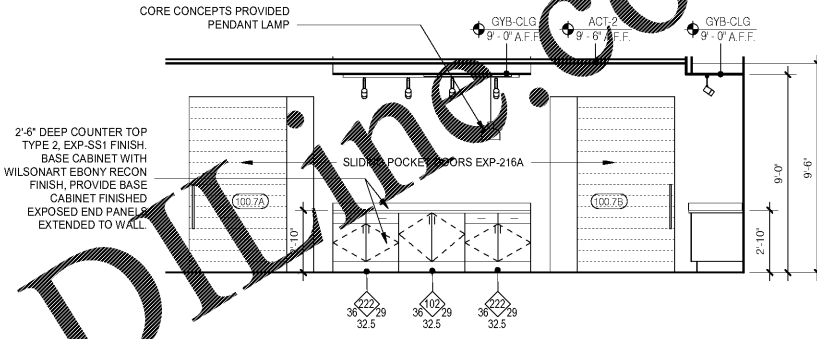
9 PANTRY SOUTH
1/4" = 1'-0"



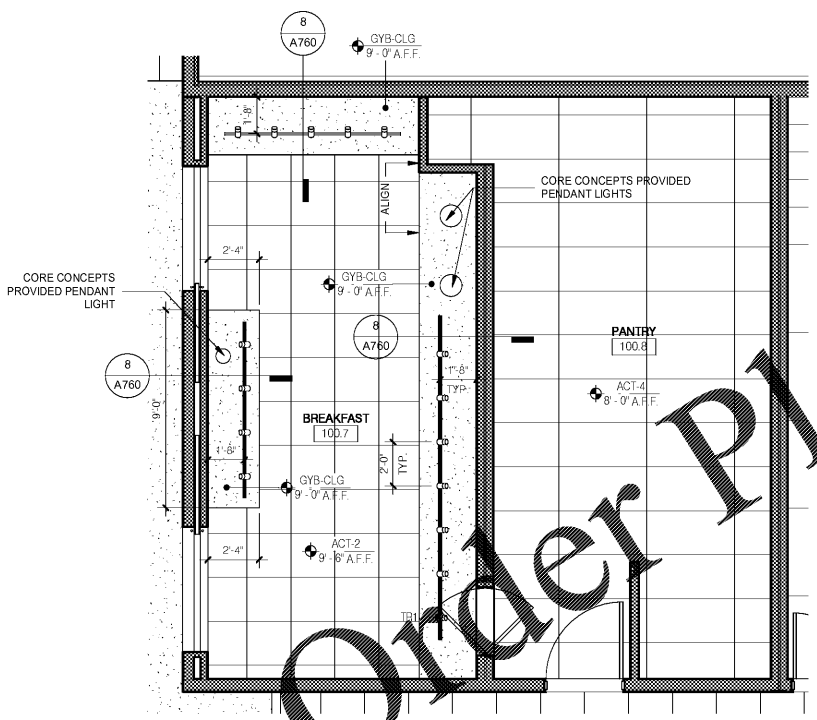
7 PANTRY EAST
1/4" = 1'-0"



5 BREAKFAST SOUTH
1/4" = 1'-0"



BREAKFAST EAST
1/4" = 1'-0"

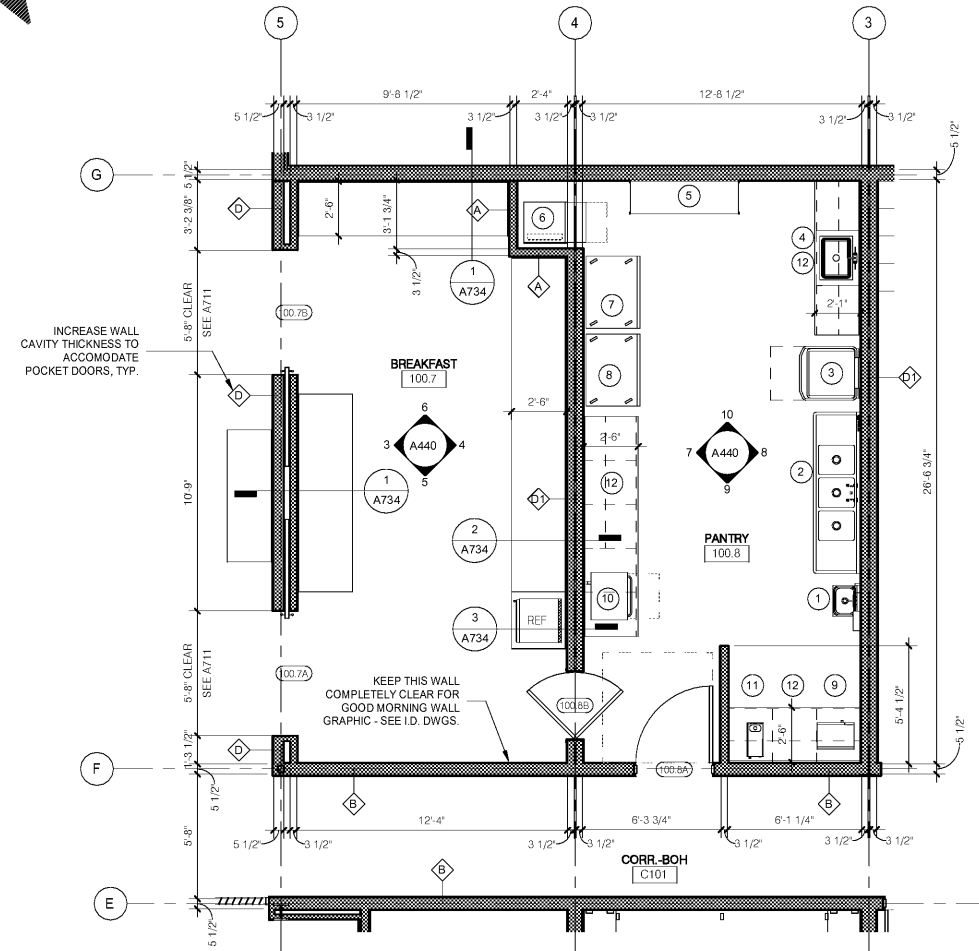


2 BREAKFAST PANTRY BREAK REFLECTED CEILING PLAN
1/4" = 1'-0"

NOTE: COORDINATE BREAKFAST BAR AND PANTRY LAYOUT, EQUIPMENT, AND FINISHES WITH LATEST CORE CONCEPTS INFORMATION. SEE DRAWINGS A440A, A440B, AND A440C.

PANTRY EQUIPMENT	MANUFACTURER	MODEL
1 HAND WASH SINK	AERO HS SERIES	HSD
2 TRIPLE PREP SINK	ELKAY	3C16X20-2-18X
3 DISHWASHER	HOBART	AM15
4 SINK	ARMOR GROUP	US-1824-16
5 SHELVING		
6 ICE MACHINE / STORAGE BIN	SCOTSMAN	C0322 w/ B322S BIN
7 REFRIGERATOR	TRUE	T-35
8 FREEZER	TRUE	T-35F
9 MICROWAVE	PANASONIC	NE-1025 1000 WATT
10 RATIONAL OVEN*	RATIONAL	SELF COOKING CENTER XS 6 2/3 E (6 x 2/3 GN)
11 COFFEE SHUTTLE BREWER*	BUNN	CWA APS w/ AIRPOT
12 BASE CABINETS / COUNTER w/ SHELVING ABOVE		

*REFER TO IGH SPECIFICATIONS AND REQUIREMENTS FOR RATIONAL OVEN AND COFFEE SHUTTLE BREWER.
ALL OTHER PANTRY EQUIPMENT IS BY OWNER. CONFIRM EQUIPMENT SPECIFICATIONS AND LOCATIONS BEFORE ROUGH IN.



1 BREAKFAST-PANTRY-BREAK
1/4" = 1'-0"

No.	Description	Date

DISCLAIMER: PC is providing, by agreement with certain parties, materials, specifications, reports, and electronic media (including but not necessarily limited to CAD documents) are subject to modification, alteration, correction, transmission, conversion, media degradation, software error or human alteration. Accordingly, all such documents are provided as a guide only and not as a record document. Any reliance thereon is deemed to be the responsibility of the user. The user shall retain the original stamped hard copies of the Architect's instruments of service as the only true documents of record.

MEISTER COX ARCHITECTS
 INFO@MEISTER-COX.COM
 PHONE: 610-375-1331 FAX: 610-375-4655
 1522 PENN AVENUE WYOMISSING, PA 19610
 WWW.MEISTER-COX.COM

BREAKFAST AND PANTRY
 HOLIDAY INN EXPRESS & SUITES
 INTERSECTION OF HAYNES PLACE & LAMM RD.
 WILSON, NC 27783

STATUS: BIDDING
 PROJ. DATE: 06-07-19
 PROJ. NO: 18-176
 PRINTED: 6/7/2019 7:11:28 PM
 DRAWN BY: RFF
 CHECKED BY: TGC

SHEET NO.
A440
 SCALE: 1/4" = 1'-0"

