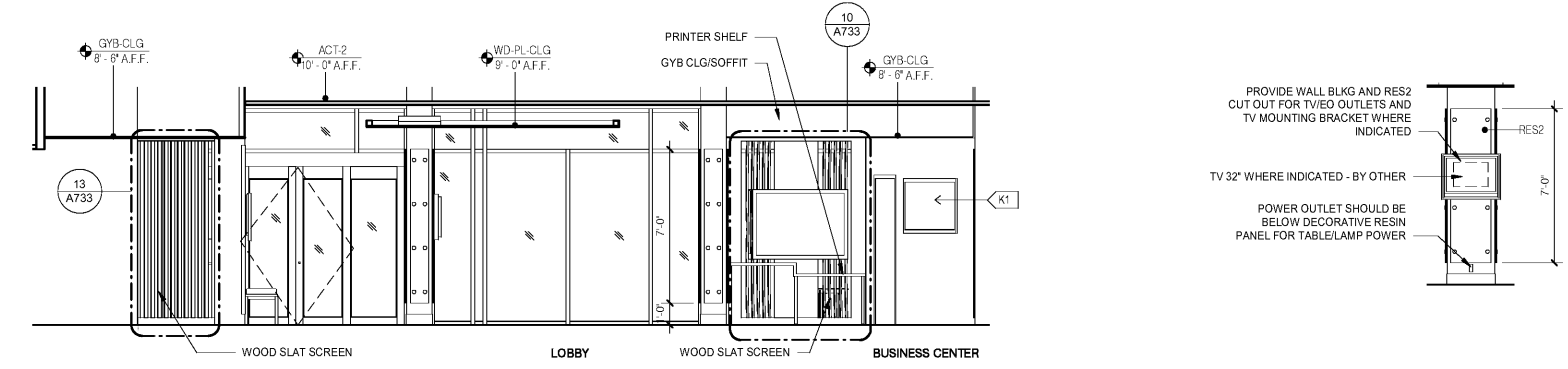
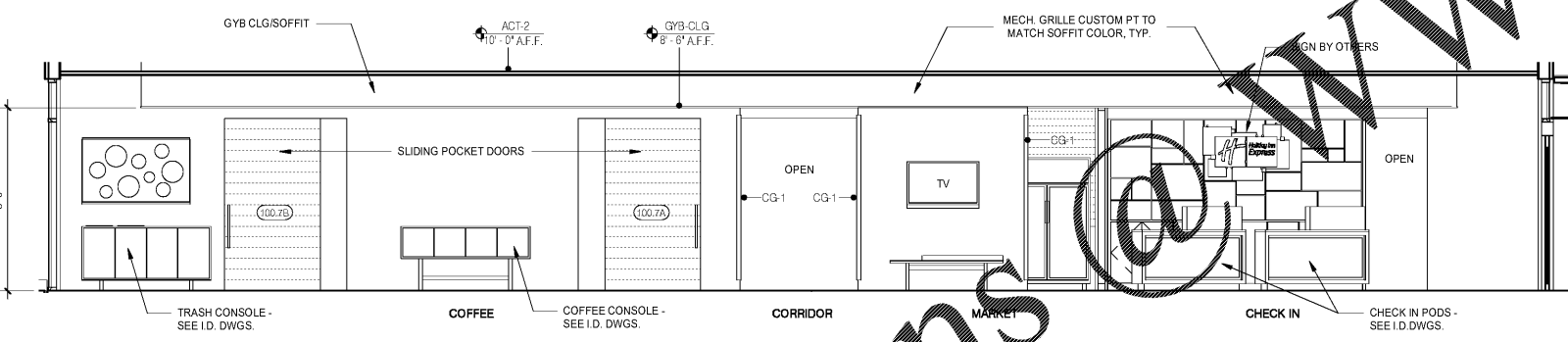


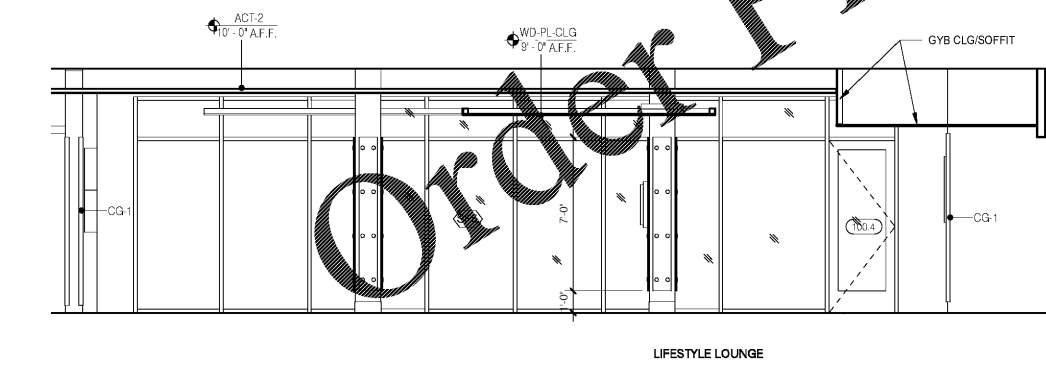
1 LOBBY/GREAT ROOM/LOBBY EAST
1/4" = 1'-0"



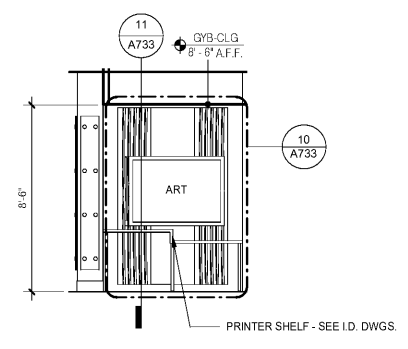
2 LOBBY/GREAT ROOM/LOBBY SOUTH
1/4" = 1'-0"



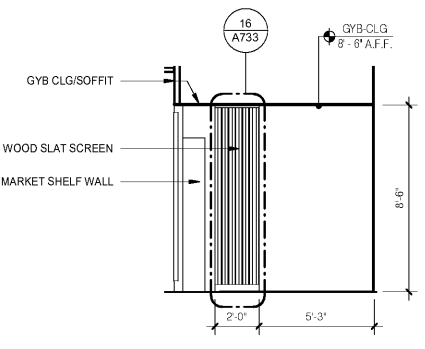
3 LOBBY/GREAT ROOM/LOBBY WEST
1/4" = 1'-0"



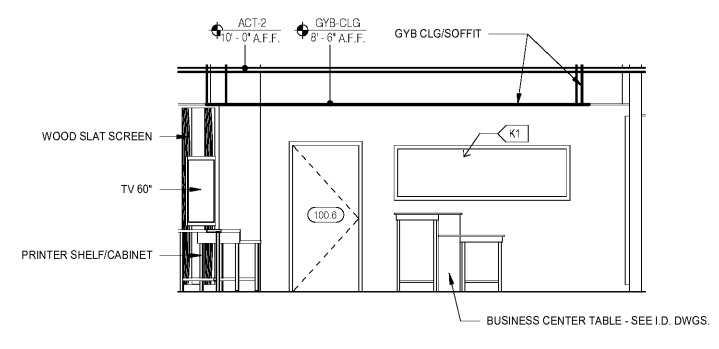
4 LOBBY/GREAT ROOM/LOBBY NORTH
1/4" = 1'-0"



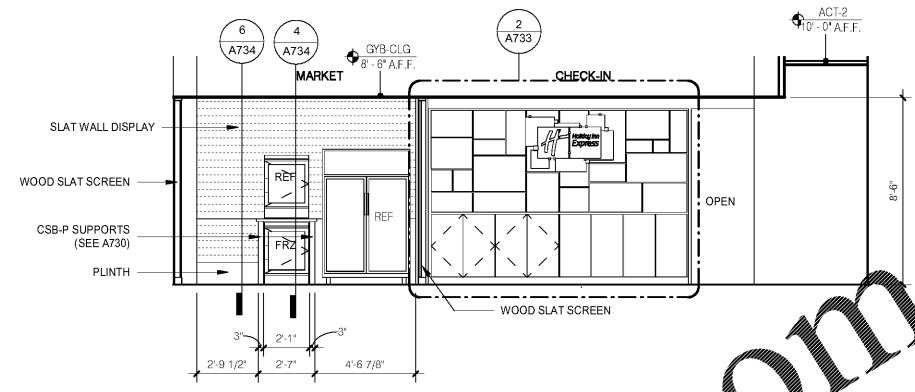
5 BUSINESS PRINTER SHELF ELEVATION
1/4" = 1'-0"



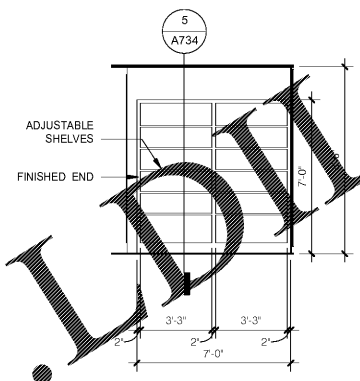
6 CHECK IN SCREEN WALL
1/4" = 1'-0"



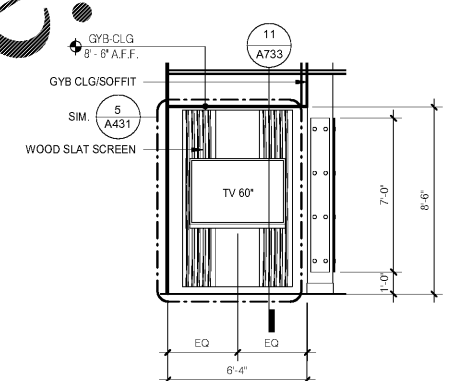
7 LOBBY/GREAT ROOM BUSINESS CENTER
1/4" = 1'-0"



9 CHECK IN/MARKET
1/4" = 1'-0"



10 MARKET - SHELF WALL
1/4" = 1'-0"



8 LOUNGE TV SCREEN @ BUSINESS DIVIDER
1/4" = 1'-0"

11 LOBBY/GREAT ROOM COLUMNS
1/4" = 1'-0"

Order Plans @ WWW.LDLINE.COM

No.	Description	Date

DISCLAIMER: LDLINE, PC is providing, by agreement with certain parties, materials stored electronically. The parties recognize that data, plans, specifications, reports, drawings, and other documents are subject to unauthorized alteration, copying, transmission, conversion, media degradation, software error or human alteration. Accordingly, all such documents are provided as a service and not as a record. Any reliance thereon is deemed to be the user's responsibility. LDLINE, PC and its affiliates shall not be held liable for any errors or omissions in the documents of record.

MEISTER-COX ARCHITECTS
 INFO@MEISTER-COX.COM
 PHONE: 610-375-1331 FAX: 610-375-4665
 1522 PENN AVENUE WYOMISSING, PA 19381
 WWW.MEISTER-COX.COM

LOBBY/GREAT ROOM ELEVATIONS
 HOLIDAY INN EXPRESS & SUITES
 INTERSECTION OF HAYNES PLACE & LAMM RD.
 WILSON, NC 27893

STATUS:	BIDDING
PROJ. DATE:	06-07-19
PROJ. NO.:	18-176
PRINTED:	6/7/2019 7:11:26 PM
DRAWN BY:	RFF
CHECKED BY:	TGC
SHEET NO.:	A431
SCALE:	1/4" = 1'-0"

NOTE: MAXIMUM PROJECTION OF WALL MOUNTED TV'S AND ART IS 4" PER ACCESSIBILITY REQUIREMENTS.

