

**REFLECTED CEILING PLAN NOTES**

- LEVEL 1 GYB-RC CEILING AT 11'-0" IS CONTINUOUS, WITH THE EXCEPTION OF ENCLOSING STEEL BEAMS AND LOAD BEARING WALLS, ABOVE ALL ACT AND GYB-CLG CEILINGS.
- LEVELS 2, 3 AND 4 GYB CLG CEILING AT 8'-0" IS CONTINUOUS ABOVE ACT CEILINGS WITH THE EXCEPTION OF LOAD BEARING WALLS.
- REFER TO MEP DWGS FOR ADDITIONAL LIGHT, HVAC AND PLUMBING FIXTURE TYPES AND SPECIFICATIONS.
- SEE ENLARGED GUESTROOM PLANS FOR MORE INFORMATION.
- RECESSED LIGHT AND OTHER FIXTURES PENETRATING RATED HORIZONTAL FLOOR/CEILING ASSEMBLY REQUIRES GYB HOUSING, SEE A760/15.

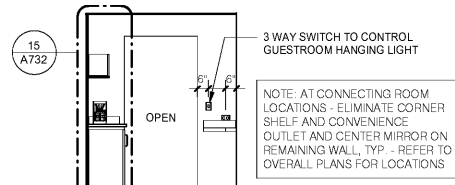
**ENLARGED PLAN GENERAL NOTES:**

- SEE SHEET A400 FOR TYPICAL MOUNTING HEIGHTS.
- SEE ARCHITECTURAL MANUAL FOR FINISHES, MATERIAL AND BUILDING AND BATHROOM ACCESSORY SPECIFICATIONS.
- PAIN MAY BE SUBSTITUTED FOR WALLCOVERING, SEE SPECIFICATIONS.
- SEE ELECTRICAL DRAWINGS FOR ADDITIONAL HEARING IMPAIRED ROOM DEVICES.
- PROVIDE BACKING AND BLOCKING FOR EQUIPMENT AND FURNITURE AS REQUIRED BY MANUFACTURER.
- COORDINATE W/ FF&E PROVIDER TO PROVIDE EXG-402 LIGHT FIXTURE WHICH DOES NOT HAVE A BUILT IN ROCKER SWITCH. LIGHT FIXTURE WILL BE A PLUG IN FIXTURE, AND WILL BE CONTROLLED BY THREE WAY LIGHT SWITCHES AT THE VESTIBULE AND IN THE GUESTROOM. REFER TO ELEVATIONS AND ELECTRICAL DRAWINGS FOR SWITCH LOCATIONS.
- PROVIDE DOOR PRIVACY LATCH WHICH ALLOWS THE DOOR TO CLOSE AND LATCH AT ALL TIMES. DOOR MAY NOT BE PROPPED OPEN USING PRIVACY LATCH (SWING BAR TYPE LATCH NOT PERMITTED)

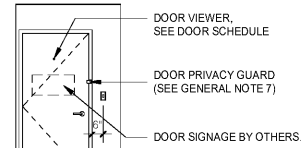
**SUBSTITUTION LIST**

SPECIFIED	APPROVED FOR SUBSTITUTION
EXG-WC1	EXG-PT1
EXG-WC2	EXG-PT1 OR EXG-AK1
EXG-WC3	EXG-PT4 OR EXG-AK2
EXG-WC4	EXG-PT5 OR EXG-AK3
EXG-VF1	EXG-T1
EXG-B1	EXG-B5

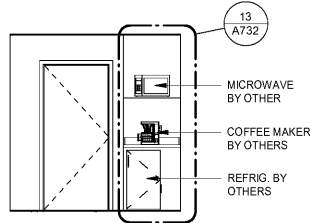
NOTE: THE ELECTRICAL CONTRACTOR IS RESPONSIBLE FOR COORDINATING ALL RECEPTACLE LOCATIONS W/ FF&E PACKAGE. REFER TO FF&E SHOP DRAWINGS FOR LATEST REQUIREMENTS.



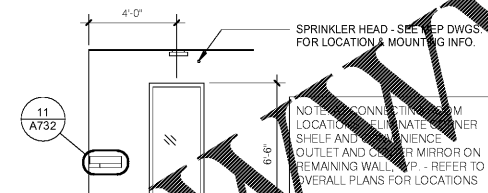
11 QQ SUITE - ENTRY - DOOR OPENING  
1/4" = 1'-0"



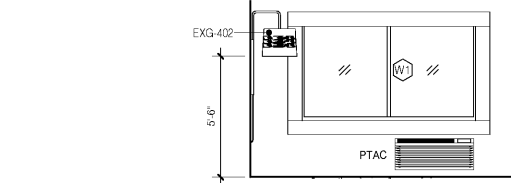
10 QQ SUITE ENTRY DOOR  
1/4" = 1'-0"



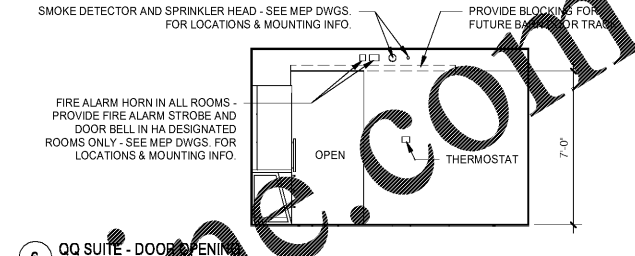
9 QQ SUITE ENTRY REFRESHMENTS  
1/4" = 1'-0"



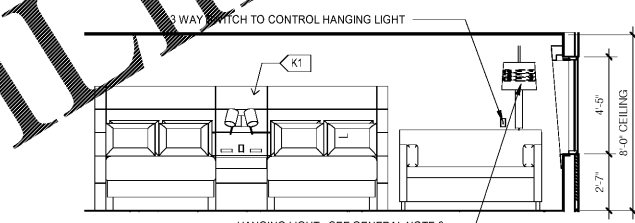
11 QQ SUITE ENTRY MIRROR  
1/4" = 1'-0"



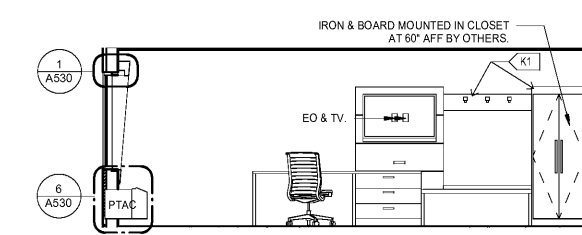
7 QQ SUITE - WINDOW  
1/4" = 1'-0"



6 QQ SUITE - DOOR OPENING  
1/4" = 1'-0"

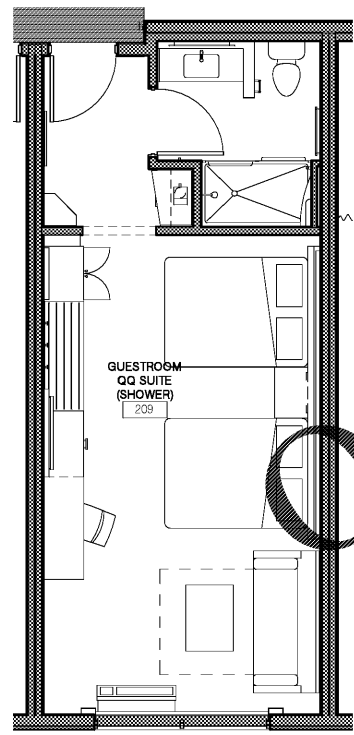


5 QQ SUITE - BED  
1/4" = 1'-0"

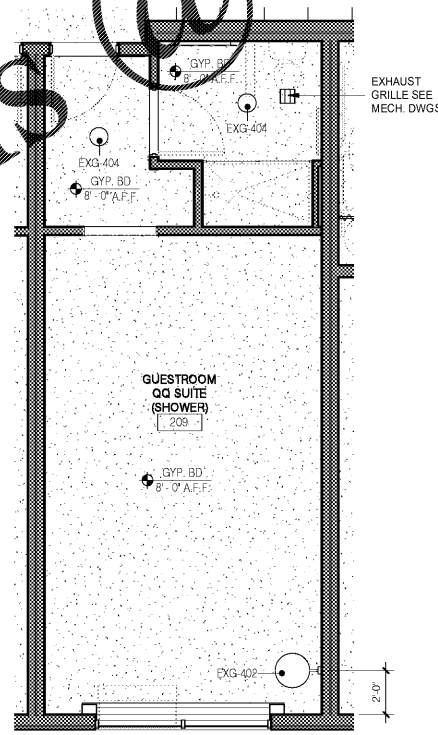


4 QQ SUITE - RACK  
1/4" = 1'-0"

NOTE: FURNITURE LAYOUT IS PROVIDED FOR REFERENCE ONLY. INTERIOR DESIGN DRAWINGS SUPERCEDE THESE DRAWINGS.

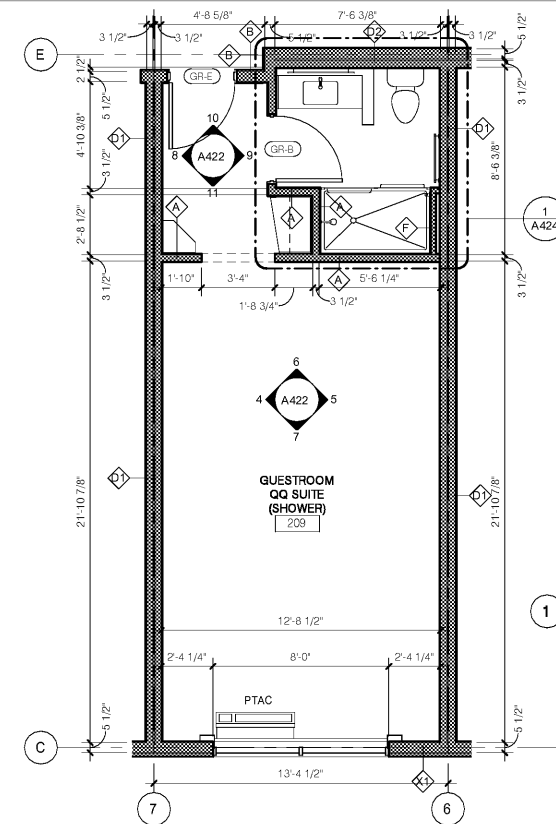


3 GUESTROOM QQ SUITE - FURNITURE  
1/4" = 1'-0"



2 GUESTROOM QQ SUITE - RCP  
1/4" = 1'-0"

- RCP NOTES:**
- SEE ELECTRICAL PLANS FOR LIGHT TYPES AND SPECS.
  - SEE MEP DRAWINGS FOR SMOKE / CO DETECTOR AND SPRINKLER HEAD REQUIREMENTS.
  - PROVIDE WIRING FOR SMOKE DETECTOR IN VESTIBULE. COVER W/ BLANK PLATE FOR FUTURE INSTALLATION.



1 GUESTROOM QQ SUITE  
1/4" = 1'-0"

- NOTES:**
- AT CONNECTING ROOM LOCATIONS - ELIMINATE CORNER SHELF AND CONVENIENCE OUTLET AND CENTER MIRROR ON REMAINING WALL, TYP. - REFER TO OVERALL PLANS FOR LOCATIONS.
  - SEE DRAWING A424 FOR BATHROOM DETAILS & ELEVATIONS.

No.	Description	Date

DISCLAIMER: PC is providing, by agreement with certain parties, materials stored electronically. The parties recognize that data, plans, specifications, reports, drawings, and other documents are subject to unauthorized alteration, copying, transmission, conversion, media degradation, software error or human alteration. Accordingly, all such documents are provided as a service and not as a contract or as a record. Any reliance thereon is deemed to be solely the responsibility of the user. The original documents of record are the only true documents of record.

**MEISTER-COX ARCHITECTS**  
 INFO@MEISTER-COX.COM  
 PHONE: 610-375-1331 FAX: 610-375-4655  
 1522 PENN AVENUE WYOMISSING, PA 19380  
 WWW.MEISTER-COX.COM

**GUESTROOM - QQ SUITE**  
 HOLIDAY INN EXPRESS & SUITES  
 INTERSECTION OF HAYNES PLACE & LAMM RD.  
 WILSON, NC 27893

STATUS: BIDDING  
 PROJ. DATE: 06-07-19  
 PROJ. NO: 18-176  
 PRINTED: 6/7/2019 7:11:18 PM  
 DRAWN BY: RFF  
 CHECKED BY: TGC  
 SHEET NO. A422  
 SCALE: 1/4" = 1'-0"

