

REFLECTED CEILING PLAN NOTES

- 1. LEVEL 1 GYB-RC CEILING AT 11'-0" IS CONTINUOUS, WITH THE EXCEPTION OF ENCLOSING STEEL BEAMS AND LOAD BEARING WALLS, ABOVE ALL ACT AND GYB-CLG CEILINGS.
2. LEVELS 2, 3 AND 4 GYB CLG CEILING AT 8'-0" IS CONTINUOUS ABOVE ACT CEILINGS WITH THE EXCEPTION OF LOAD BEARING WALLS.
3. REFER TO MEP DWGS FOR ADDITIONAL LIGHT, HVAC AND PLUMBING FIXTURE TYPES AND SPECIFICATIONS.
4. SEE ENLARGED GUESTROOM PLANS FOR MORE INFORMATION.
5. RECESSED LIGHT AND OTHER FIXTURES PENETRATING RATED HORIZONTAL FLOOR/CEILING ASSEMBLY REQUIRES GYB HOUSING, SEE A760/15.

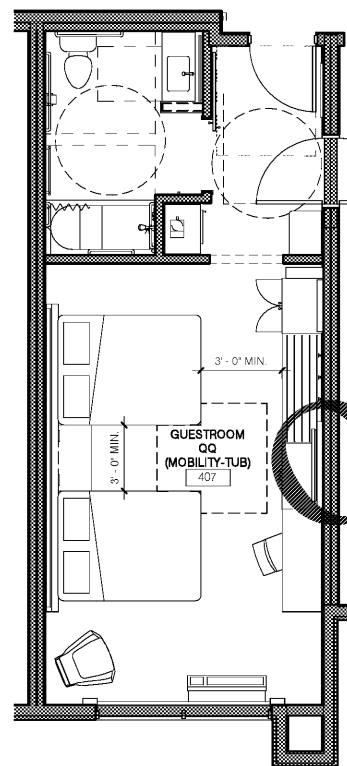
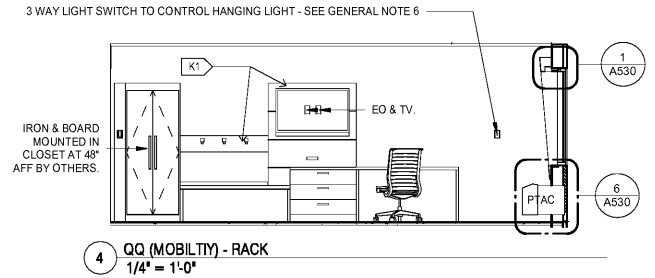
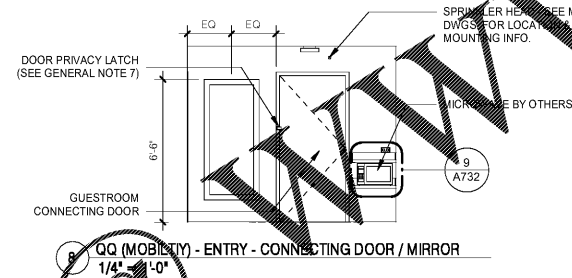
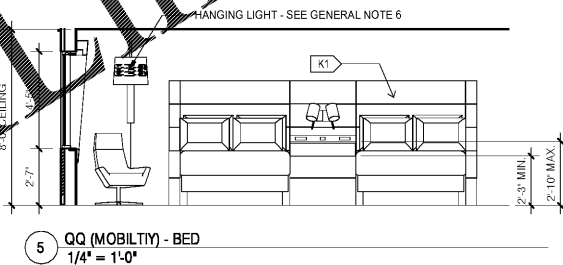
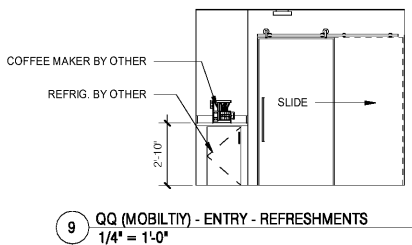
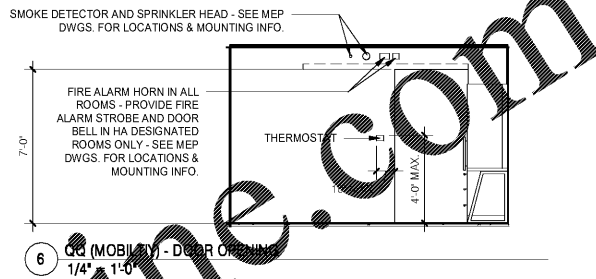
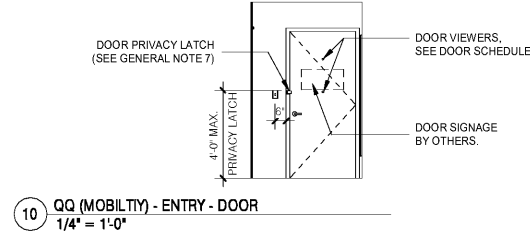
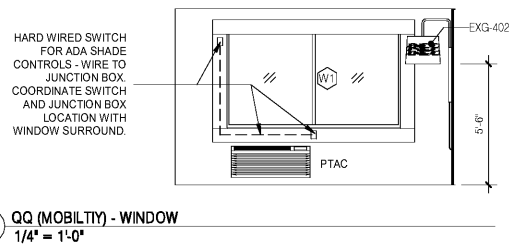
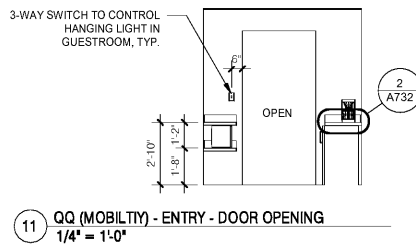
ENLARGED PLAN GENERAL NOTES:

- 1. SEE SHEET A400 FOR TYPICAL MOUNTING HEIGHTS.
2. SEE ARCHITECTURAL MANUAL FOR FINISHES, MATERIAL AND BUILDING AND BATHROOM ACCESSORY SPECIFICATIONS.
3. PAINT MAY BE SUBSTITUTED FOR WALLCOVERING, SEE SPECIFICATIONS.
4. SEE ELECTRICAL DRAWINGS FOR ADDITIONAL HEARING IMPAIRED ROOM DEVICES.
5. PROVIDE BACKING AND BLOCKING FOR EQUIPMENT AND FURNITURE AS REQUIRED BY MANUFACTURER.
6. COORDINATE W/ FF&E PROVIDER TO PROVIDE EXG-402 LIGHT FIXTURE WHICH DOES NOT HAVE A BUILT IN ROCKER SWITCH. LIGHT FIXTURE WILL BE A PLUG IN FIXTURE, AND WILL BE CONTROLLED BY THREE WAY LIGHT SWITCHES AT THE VESTIBULE AND IN THE GUESTROOM. REFER TO ELEVATIONS AND ELECTRICAL DRAWINGS FOR SWITCH LOCATIONS.
7. PROVIDE DOOR PRIVACY LATCH WHICH ALLOWS THE DOOR TO CLOSE AND LATCH AT ALL TIMES. DOOR MAY NOT BE PROPPED OPEN USING PRIVACY LATCH (SWING BAR TYPE LATCH NOT PERMITTED)

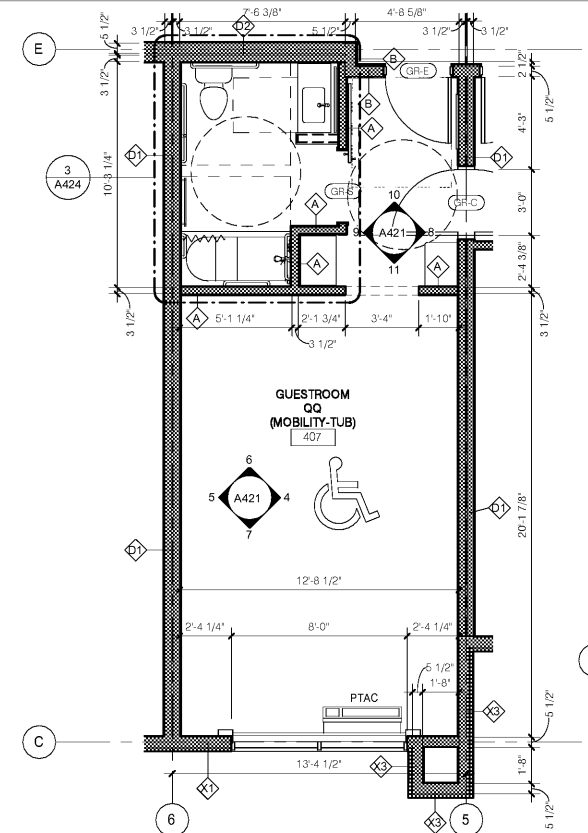
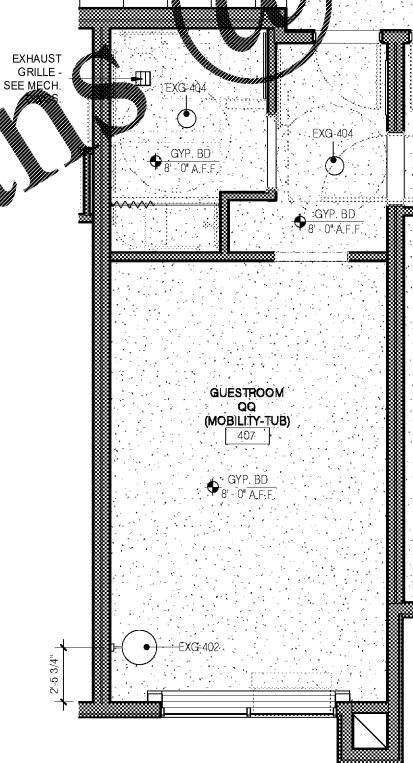
SUBSTITUTION LIST

Table with 2 columns: SPECIFIED and APPROVED FOR SUBSTITUTION. Rows include EXG-WC1, EXG-WC2, EXG-WC3, EXG-WC4, EXG-VF1, EXG-B1 and their respective substitutions.

NOTE: THE ELECTRICAL CONTRACTOR IS RESPONSIBLE FOR COORDINATING ALL RECEPTACLE LOCATIONS W/ FF&E PACKAGE. REFER TO FF&E SHOP DRAWINGS FOR LATEST REQUIREMENTS.



NOTE: FURNITURE LAYOUT IS PROVIDED FOR REFERENCE ONLY. INTERIOR DESIGN DRAWINGS SUPERCEDE THESE DRAWINGS. MAINTAIN MINIMUM CLEARANCES SHOWN ON THESE DRAWINGS AS A MOBILITY ACCESSIBLE ROOMS.



NOTE: SEE DRAWING A424 FOR BATHROOM DETAILS & ELEVATIONS.

Table with 3 columns: No., Description, Date. Contains a list of revisions.

DISCLAIMER: PC is providing, by agreement with certain parties, materials (electronic, reports, etc.) and electronic media (including but not limited to, CAD documents) are subject to... MEISTER-COX ARCHITECTS

MEISTER-COX ARCHITECTS
INFO@MEISTER-COX.COM
PHONE: 610-375-1331 FAX: 610-375-4655
1522 PENN AVENUE WYOMISSING, PA 19380
WWW.MEISTER-COX.COM

GUESTROOM - QQ (MOBILITY)
HOLIDAY INN EXPRESS & SUITES
INTERSECTION OF HAYNES PLACE & LAMM RD.
WILSON, NC 27893

Table with 2 columns: STATUS, PROJ. DATE, PROJ. NO., PRINTED, DRAWN BY, CHECKED BY, SHEET NO., SCALE. Includes project details and sheet number A421.

N:\Active Projects\Hospitality\018 Holiday Inn Express - Wilson, NCDrawings CAD-Rev\A18-176.rvt