

**REFLECTED CEILING PLAN NOTES**

- LEVEL 1 GYB-RC CEILING AT 11'-0" IS CONTINUOUS, WITH THE EXCEPTION OF ENCLOSING STEEL BEAMS AND LOAD BEARING WALLS, ABOVE ALL ACT AND GYB-CLG CEILINGS.
- LEVELS 2, 3 AND 4 GYB CLG CEILING AT 8'-0" IS CONTINUOUS ABOVE ACT CEILINGS WITH THE EXCEPTION OF LOAD BEARING WALLS.
- REFER TO MEP DWGS FOR ADDITIONAL LIGHT, HVAC AND PLUMBING FIXTURE TYPES AND SPECIFICATIONS.
- SEE ENLARGED GUESTROOM PLANS FOR MORE INFORMATION.
- RECESSED LIGHT AND OTHER FIXTURES PENETRATING RATED HORIZONTAL FLOOR/CEILING ASSEMBLY REQUIRES GYB HOUSING, SEE A760/15.

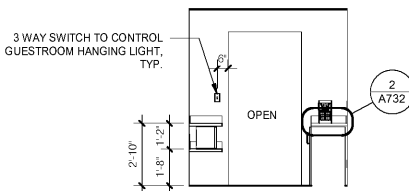
**ENLARGED PLAN GENERAL NOTES:**

- SEE SHEET A400 FOR TYPICAL MOUNTING HEIGHTS.
- SEE ARCHITECTURAL MANUAL FOR FINISHES, MATERIAL AND BUILDING AND BATHROOM ACCESSORY SPECIFICATIONS.
- PAINT MAY BE SUBSTITUTED FOR WALLCOVERING. SEE SPECIFICATIONS.
- SEE ELECTRICAL DRAWINGS FOR ADDITIONAL HEARING IMPAIRED ROOM DEVICES.
- PROVIDE BACKING AND BLOCKING FOR EQUIPMENT AND FURNITURE AS REQUIRED BY MANUFACTURER.
- COORDINATE W/ FF&E PROVIDER TO PROVIDE EXG-402 LIGHT FIXTURE WHICH DOES NOT HAVE A BUILT IN ROCKER SWITCH. LIGHT FIXTURE WILL BE A PLUG IN FIXTURE, AND WILL BE CONTROLLED BY THREE WAY LIGHT SWITCHES AT THE VESTIBULE AND IN THE GUESTROOM. REFER TO ELEVATIONS AND ELECTRICAL DRAWINGS FOR SWITCH LOCATIONS.
- PROVIDE DOOR PRIVACY LATCH WHICH ALLOWS THE DOOR TO CLOSE AND LATCH AT ALL TIMES. DOOR MAY NOT BE PROPPED OPEN USING PRIVACY LATCH (SWING BAR TYPE LATCH NOT PERMITTED)

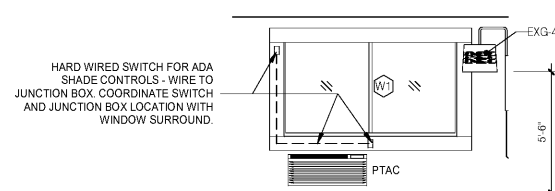
**SUBSTITUTION LIST**

SPECIFIED	APPROVED FOR SUBSTITUTION
EXG-WC1	EXG-PT1
EXG-WC2	EXG-PT1 OR EXG-AK1
EXG-WC3	EXG-PT4 OR EXG-AK2
EXG-WC4	EXG-PT5 OR EXG-AK3
EXG-VF1	EXG-T1
EXG-B1	EXG-B5

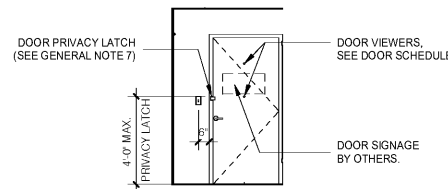
NOTE: THE ELECTRICAL CONTRACTOR IS RESPONSIBLE FOR COORDINATING ALL RECEPTACLE LOCATIONS W/ FF&E PACKAGE. REFER TO FF&E SHOP DRAWINGS FOR LATEST REQUIREMENTS.



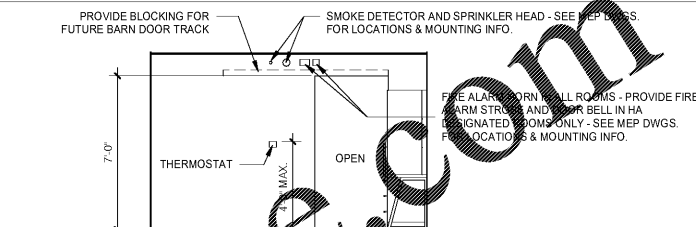
11 KING SUITE (MOBILITY) - ENTRY - DOOR OPENING  
1/4" = 1'-0"



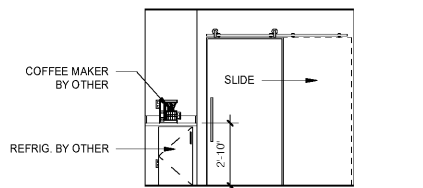
7 KING SUITE (MOBILITY) - WINDOW  
1/4" = 1'-0"



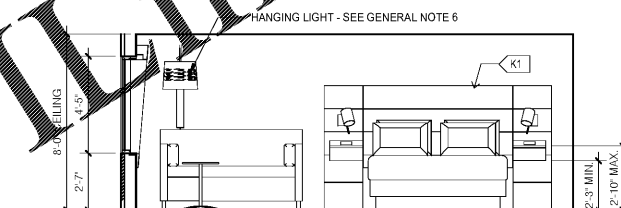
10 KING SUITE (MOBILITY) - ENTRY - DOOR  
1/4" = 1'-0"



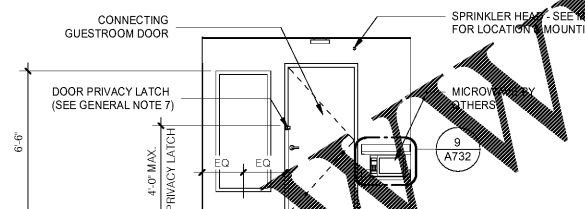
6 KING SUITE (MOBILITY) - DOOR OPENING  
1/4" = 1'-0"



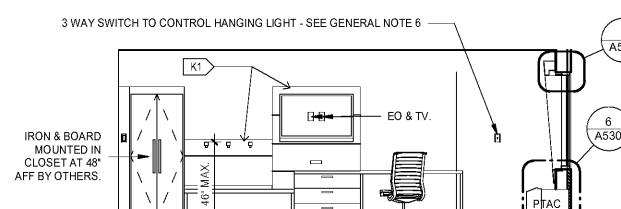
9 KING SUITE (MOBILITY) - ENTRY - REFRESHMENTS  
1/4" = 1'-0"



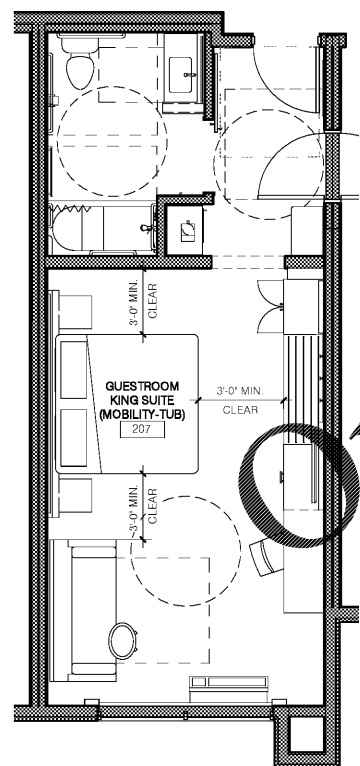
5 KING SUITE (MOBILITY) - BED  
1/4" = 1'-0"



8 KING SUITE (MOBILITY) - ENTRY - CONNECTING DOOR / MIRROR  
1/4" = 1'-0"



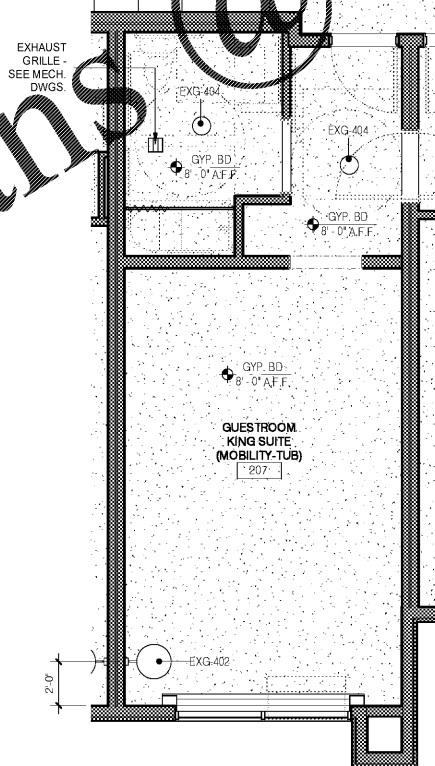
4 ACCESSIBLE KING SUITE - RACK  
1/4" = 1'-0"



3 GUESTROOM - KING SUITE (MOBILITY) - FURNITURE  
1/4" = 1'-0"

NOTE: FURNITURE LAYOUT IS PROVIDED FOR REFERENCE ONLY. INTERIOR DESIGN DRAWINGS SUPERCEDE THESE DRAWINGS. MAINTAIN MINIMUM CLEARANCES SHOWN ON THESE DRAWINGS AS MOBILE ACCESSIBLE ROOMS.

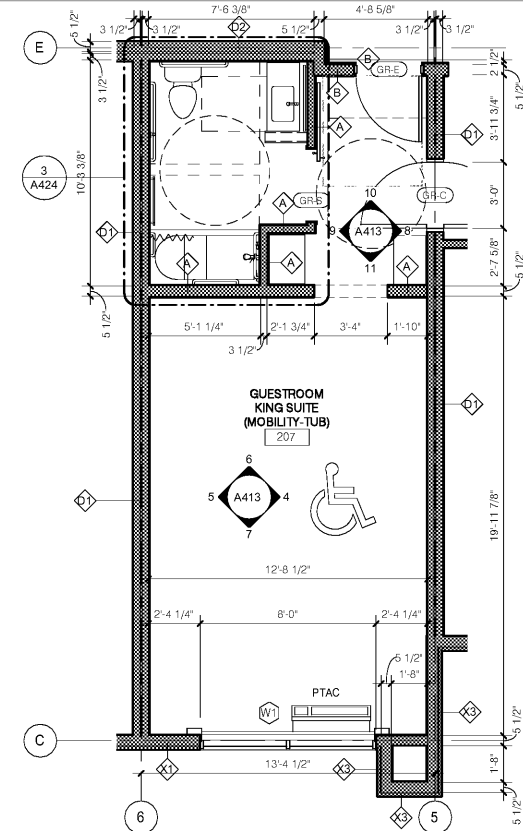
NOTE: PROVIDE OPEN BED FRAME AND ACCESSIBLE WINDOW TREATMENT



2 GUESTROOM - KING SUITE (MOBILITY) - RCP  
1/4" = 1'-0"

**RCP NOTES:**

- SEE ELECTRICAL PLANS FOR LIGHT TYPES AND SPECS.
- SEE MEP DRAWINGS FOR SMOKE / CO DETECTOR AND SPRINKLER HEAD REQUIREMENTS.
- PROVIDE WIRING FOR SMOKE DETECTOR IN VESTIBULE. COVER W/ BLANK PLATE FOR FUTURE INSTALLATION.



1 GUESTROOM - KING SUITE (MOBILITY)  
1/4" = 1'-0"

NOTE: SEE DRAWING A424 FOR BATHROOM DETAILS & ELEVATIONS.

No.	Description	Date

DISCLAIMER: MEISTER-COX ARCHITECTS, PC is providing, by agreement with certain parties, materials (hereinafter "materials") for use in the design of certain parts of a project. The materials are provided for informational purposes only and are not intended to constitute a contract. The materials are provided "as is" and are not intended to constitute a contract. The materials are provided "as is" and are not intended to constitute a contract. The materials are provided "as is" and are not intended to constitute a contract.

**MEISTER-COX ARCHITECTS**  
 INFO@MEISTER-COX.COM  
 PHONE: 610-375-1331 FAX: 610-375-4655  
 1522 PENN AVENUE WYOMISSING, PA 19380  
 WWW.MEISTER-COX.COM

**GUESTROOM - KING SUITE (MOBILITY)**  
 HOLIDAY INN EXPRESS & SUITES  
 INTERSECTION OF HAYNES PLACE & LAMM RD.  
 WILSON, NC 27893

**GUESTROOM - KING SUITE (MOBILITY)**  
 HOLIDAY INN EXPRESS & SUITES  
 INTERSECTION OF HAYNES PLACE & LAMM RD.  
 WILSON, NC 27893

STATUS: BIDDING  
 PROJ. DATE: 06-07-19  
 PROJ. NO: 18-176  
 PRINTED: 6/7/2019 7:11:13 PM  
 DRAWN BY: RFF  
 CHECKED BY: TGC

SHEET NO. **A413**  
 SCALE: 1/4" = 1'-0"

