

REFLECTED CEILING PLAN NOTES

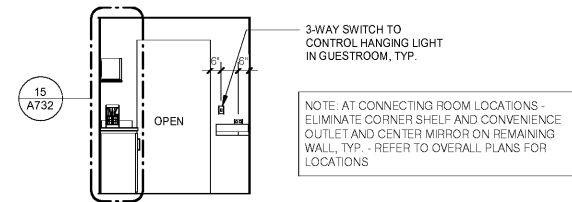
- LEVEL 1 GYB-RC CEILING AT 11'-0" IS CONTINUOUS, WITH THE EXCEPTION OF ENCLOSING STEEL BEAMS AND LOAD BEARING WALLS, ABOVE ALL ACT AND GYB-CLG CEILINGS.
- LEVELS 2, 3 AND 4 GYB CLG CEILING AT 8'-0" IS CONTINUOUS ABOVE ACT CEILINGS WITH THE EXCEPTION OF LOAD BEARING WALLS.
- REFER TO MEP DWGS FOR ADDITIONAL LIGHT, HVAC AND PLUMBING FIXTURE TYPES AND SPECIFICATIONS.
- SEE ENLARGED GUESTROOM PLANS FOR MORE INFORMATION.
- RECESSED LIGHT AND OTHER FIXTURES PENETRATING RATED HORIZONTAL FLOOR/CEILING ASSEMBLY REQUIRES GYB HOUSING, SEE A760/15.

ENLARGED PLAN GENERAL NOTES:

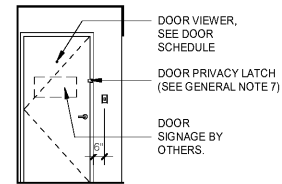
- SEE SHEET A400 FOR TYPICAL MOUNTING HEIGHTS.
- SEE ARCHITECTURAL MANUAL FOR FINISHES, MATERIAL AND BUILDING AND BATHROOM ACCESSORY SPECIFICATIONS.
- PAINT MAY BE SUBSTITUTED FOR WALLCOVERING, SEE SPECIFICATIONS.
- SEE ELECTRICAL DRAWINGS FOR ADDITIONAL HEARING IMPAIRED ROOM DEVICES.
- PROVIDE BACKING AND BLOCKING FOR EQUIPMENT AND FURNITURE AS REQUIRED BY MANUFACTURER.
- COORDINATE W/ FF&E PROVIDER TO PROVIDE EXG-402 LIGHT FIXTURE WHICH DOES NOT HAVE A BUILT IN ROCKER SWITCH. LIGHT FIXTURE WILL BE A PLUG IN FIXTURE, AND WILL BE CONTROLLED BY THREE WAY LIGHT SWITCHES AT THE VESTIBULE AND IN THE GUESTROOM. REFER TO ELEVATIONS AND ELECTRICAL DRAWINGS FOR SWITCH LOCATIONS.
- PROVIDE DOOR PRIVACY LATCH WHICH ALLOWS THE DOOR TO CLOSE AND LATCH AT ALL TIMES. DOOR MAY NOT BE PROPPED OPEN USING PRIVACY LATCH (SWING BAR TYPE LATCH NOT PERMITTED)

SUBSTITUTION LIST	
SPECIFIED	APPROVED FOR SUBSTITUTION
EXG-WC1	EXG-PT1
EXG-WC2	EXG-PT1 OR EXG-AK1
EXG-WC3	EXG-PT4 OR EXG-AK2
EXG-WC4	EXG-PT5 OR EXG-AK3
EXG-VF1	EXG-T1
EXG-B1	EXG-B5

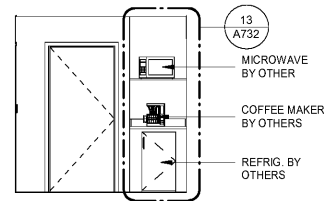
NOTE: THE ELECTRICAL CONTRACTOR IS RESPONSIBLE FOR COORDINATING ALL RECEPTACLE LOCATIONS W/ FF&E PACKAGE. REFER TO FF&E SHOP DRAWINGS FOR LATEST REQUIREMENTS.



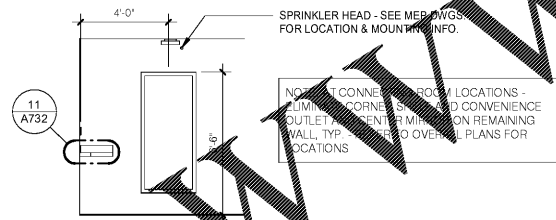
11 KING SUITE - ENTRY - DOOR OPENING
1/4" = 1'-0"



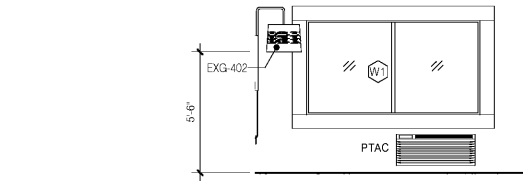
10 KING SUITE - ENTRY - DOOR
1/4" = 1'-0"



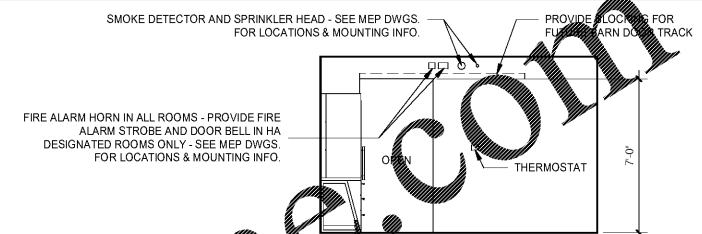
9 KING SUITE - ENTRY - REFRESHMENTS
1/4" = 1'-0"



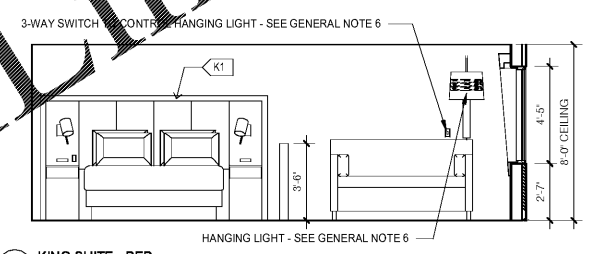
11 KING SUITE - ENTRY - MIRROR
1/4" = 1'-0"



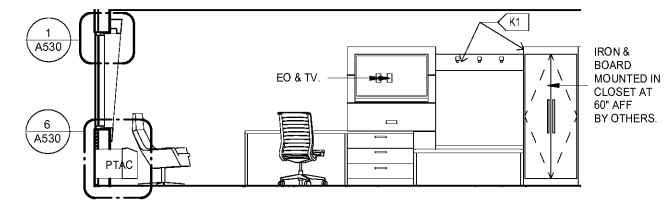
7 KING SUITE - WINDOW
1/4" = 1'-0"



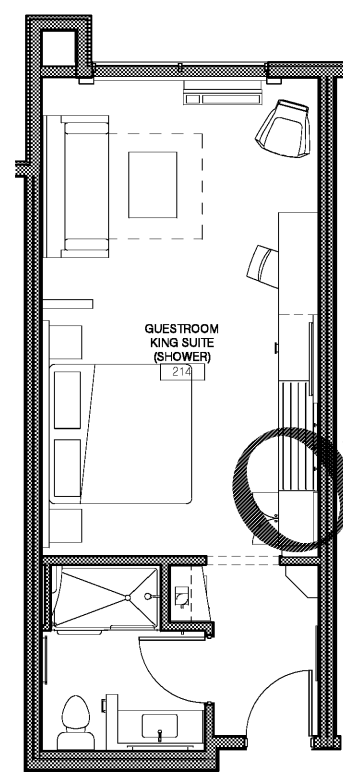
6 KING SUITE - WINDOW
1/4" = 1'-0"



5 KING SUITE - BED
1/4" = 1'-0"

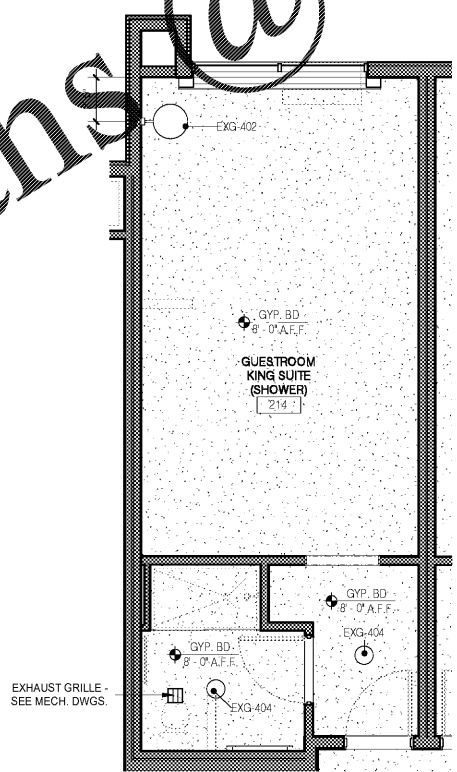


4 KING SUITE - RACK
1/4" = 1'-0"



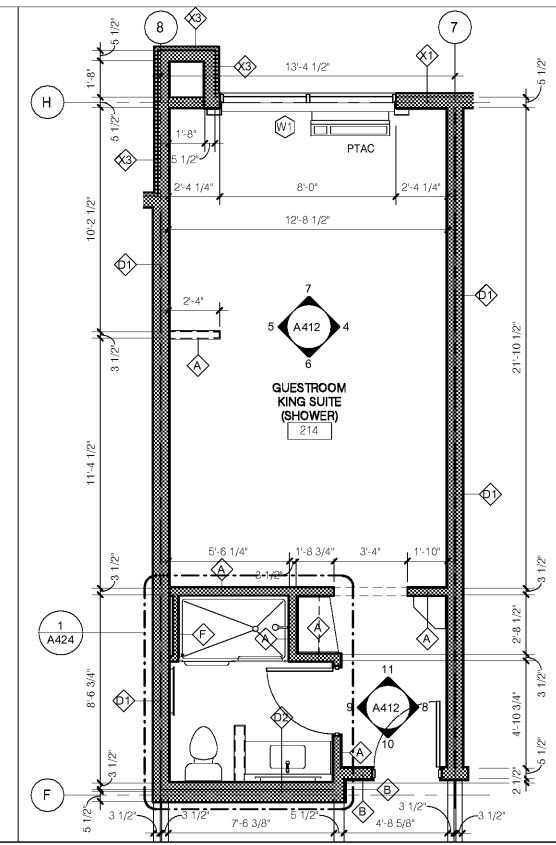
3 GUESTROOM - KING SUITE - FURNITURE
1/4" = 1'-0"

NOTE: FURNITURE LAYOUT IS PROVIDED FOR REFERENCE ONLY. INTERIOR DESIGN DRAWINGS SUPERCEDE THESE DRAWINGS.



2 GUESTROOM - KING SUITE - RCP
1/4" = 1'-0"

- RCP NOTES:**
- SEE ELECTRICAL PLANS FOR LIGHT TYPES AND SPECS.
 - SEE MEP DRAWINGS FOR SMOKE / CO DETECTOR AND SPRINKLER HEAD REQUIREMENTS.
 - PROVIDE WIRING FOR SMOKE DETECTOR IN VESTIBULE. COVER W/ BLANK PLATE FOR FUTURE INSTALLATION.



- NOTES:**
- AT CONNECTING ROOM LOCATIONS - ELIMINATE CORNER SHELF AND CONVENIENCE OUTLET AND CENTER MIRROR ON REMAINING WALL, TYP. - REFER TO OVERALL PLANS FOR LOCATIONS.
 - SEE DRAWING A424 FOR BATHROOM DETAILS & ELEVATIONS.

1 GUESTROOM - KING SUITE
1/4" = 1'-0"

No.	Description	Date

DISCLAIMER: PC is provided by agreement with certain parties, materials, specifications, reports, and electronic media (including but not necessarily limited to CAD documents) are subject to modification, alteration, change, transmission, conversion, media degradation, software error or human alteration. Accordingly, all such documents are not to be used as a final product or as a record document. Any reliance thereon is deemed to be solely the responsibility of the user. The printer's instruments of service are the only true documents of record.

MEISTER-COX ARCHITECTS

INFO@MEISTER-COX.COM
PHONE: 610-375-1331 FAX: 610-375-4655
1522 PENN AVENUE WYOMISSING, PA 19380
WWW.MEISTER-COX.COM

GUESTROOM - KING SUITE

HOLIDAY INN EXPRESS & SUITES

INTERSECTION OF HAYNES PLACE & LAMM RD.
WILSON, NC 27893

STATUS: BIDDING

PROJ. DATE: 06-07-19

PROJ. NO: 18-176

PRINTED: 6/7/2019 7:11:11 PM

DRAWN BY: RFF

CHECKED BY: TGC

SHEET NO. **A412**

SCALE: 1/4" = 1'-0"

