

REFLECTED CEILING PLAN NOTES

- LEVEL 1 GYB-RC CEILING AT 11'-0" IS CONTINUOUS, WITH THE EXCEPTION OF ENCLOSING STEEL BEAMS AND LOAD BEARING WALLS, ABOVE ALL ACT AND GYB-CLG CEILINGS.
- LEVELS 2, 3 AND 4 GYB CLG CEILING AT 8'-0" IS CONTINUOUS ABOVE ACT CEILINGS WITH THE EXCEPTION OF LOAD BEARING WALLS.
- REFER TO MEP DWGS FOR ADDITIONAL LIGHT, HVAC AND PLUMBING FIXTURE TYPES AND SPECIFICATIONS.
- SEE ENLARGED GUESTROOM PLANS FOR MORE INFORMATION.
- RECESSED LIGHT AND OTHER FIXTURES PENETRATING RATED HORIZONTAL FLOOR/CEILING ASSEMBLY REQUIRES GYB HOUSING, SEE A760115.

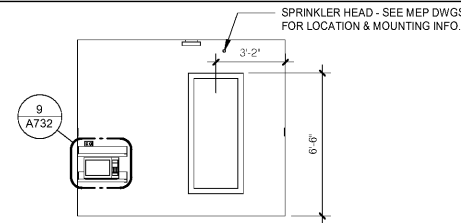
ENLARGED PLAN GENERAL NOTES:

- SEE SHEET A400 FOR TYPICAL MOUNTING HEIGHTS.
- SEE ARCHITECTURAL MANUAL FOR FINISHES, MATERIAL AND BUILDING AND BATHROOM ACCESSORY SPECIFICATIONS.
- PAINT MAY BE SUBSTITUTED FOR WALLCOVERING, SEE SPECIFICATIONS.
- SEE ELECTRICAL DRAWINGS FOR ADDITIONAL HEARING IMPAIRED ROOM DEVICES.
- PROVIDE BACKING AND BLOCKING FOR EQUIPMENT AND FURNITURE AS REQUIRED BY MANUFACTURER.
- COORDINATE W/ FF&E PROVIDER TO PROVIDE EXG-402 LIGHT FIXTURE WHICH DOES NOT HAVE A BUILT IN ROCKER SWITCH. LIGHT FIXTURE WILL BE A PLUG IN FIXTURE, AND WILL BE CONTROLLED BY THREE WAY LIGHT SWITCHES AT THE VESTIBULE AND IN THE GUESTROOM. REFER TO ELEVATIONS AND ELECTRICAL DRAWINGS FOR SWITCH LOCATIONS.
- PROVIDE DOOR PRIVACY LATCH WHICH ALLOWS THE DOOR TO CLOSE AND LATCH AT ALL TIMES. DOOR MAY NOT BE PROPPED OPEN USING PRIVACY LATCH (SWING BAR TYPE LATCH NOT PERMITTED)

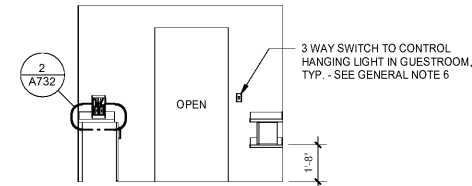
SUBSTITUTION LIST

SPECIFIED	APPROVED FOR SUBSTITUTION
EXG-WC1	EXG-PT1
EXG-WC2	EXG-PT1 OR EXG-AK1
EXG-WC3	EXG-PT4 OR EXG-AK2
EXG-WC4	EXG-PT5 OR EXG-AK3
EXG-VF1	EXG-T1
EXG-B1	EXG-B5

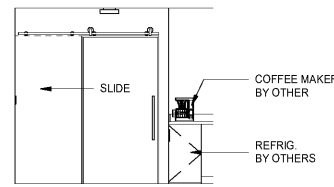
NOTE: THE ELECTRICAL CONTRACTOR IS RESPONSIBLE FOR COORDINATING ALL RECEPTACLE LOCATIONS W/ FF&E PACKAGE. REFER TO FF&E SHOP DRAWINGS FOR LATEST REQUIREMENTS.



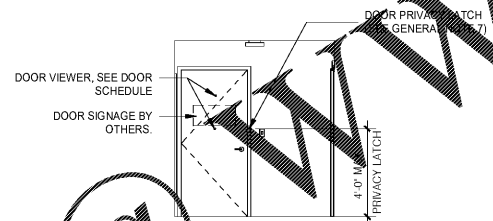
11 KING (MOBILITY) - ENTRY - MIRROR
1/4" = 1'-0"



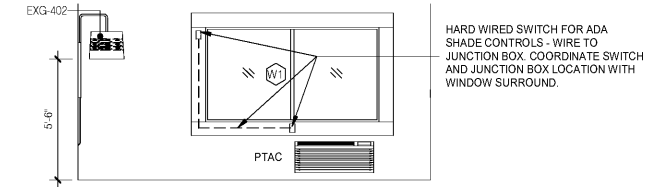
10 KING (MOBILITY) - ENTRY - DOOR OPENING
1/4" = 1'-0"



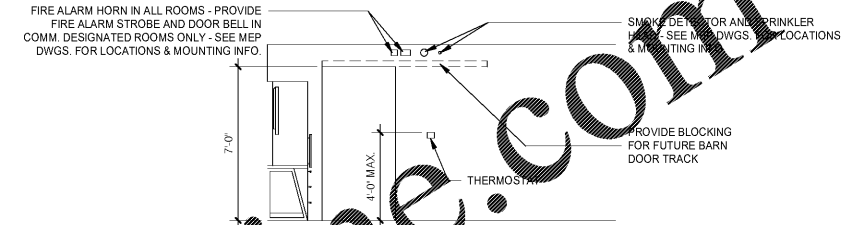
9 KING (MOBILITY) - ENTRY - REFRESHMENTS
1/4" = 1'-0"



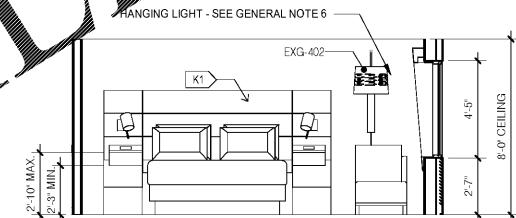
8 KING (MOBILITY) - ENTRY - DOOR / MIRROR
1/4" = 1'-0"



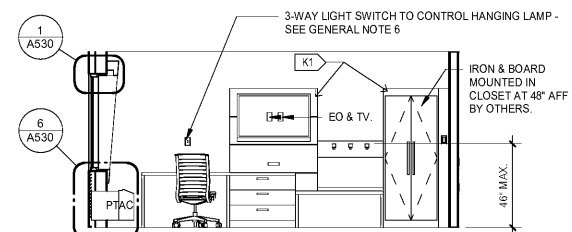
7 KING (MOBILITY) - WINDOW
1/4" = 1'-0"



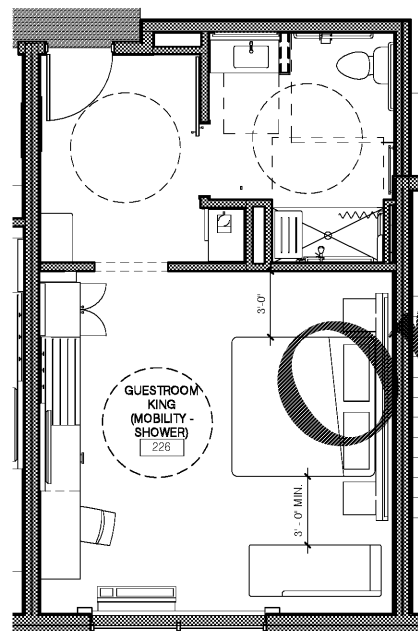
6 KING (MOBILITY) - DOOR OPENING
1/4" = 1'-0"



5 KING (MOBILITY) - BED
1/4" = 1'-0"

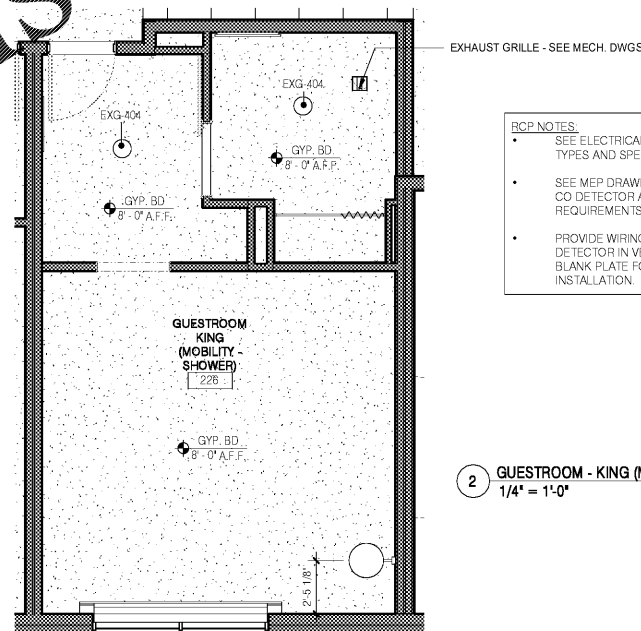


4 KING (MOBILITY) - RACK
1/4" = 1'-0"

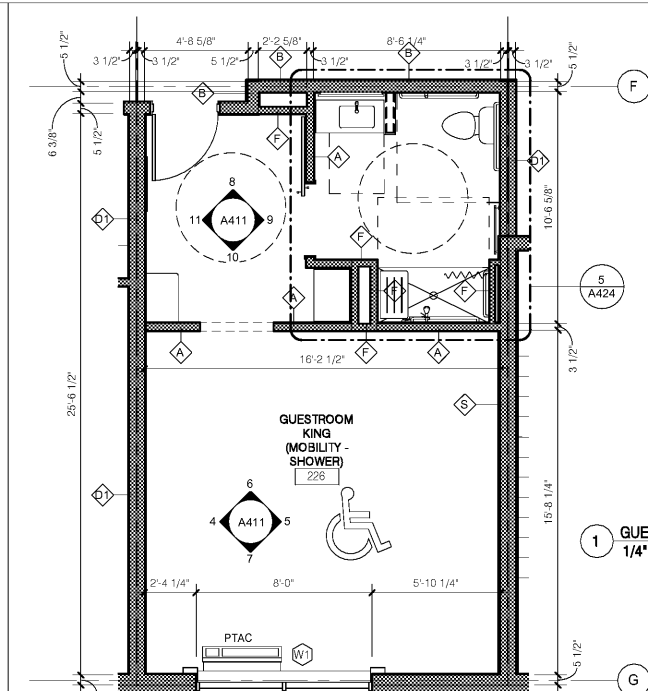


3 GUESTROOM - KING (MOBILITY - ROLL IN) - FURNITURE
1/4" = 1'-0"

NOTE: FURNITURE LAYOUT IS PROVIDED FOR REFERENCE ONLY. INTERIOR DESIGN DRAWINGS SUPERSEDE THESE DRAWINGS. MAINTAIN MINIMUM CLEARANCES SHOWN ON THESE DRAWINGS AT MOBILITY ACCESSIBLE ROOMS.



2 GUESTROOM - KING (MOBILITY - ROLL-IN) - RCP
1/4" = 1'-0"



1 GUESTROOM - KING (MOBILITY - ROLL IN)
1/4" = 1'-0"

No.	Description	Date

DISCLAIMER: PC is providing, by agreement with certain parties, materials derived electronically. The parties recognize that data, plans, specifications, reports, drawings, and other documents are subject to unauthorized alteration, copying, transmission, conversion, media degradation, software error or human alteration. Accordingly, all such documents are provided as a service and not as a record document. Any reliance thereon is deemed to be solely the responsibility of the user. The original documents are the only true documents of record.

MEISTER-COX ARCHITECTS
 INFO@MEISTER-COX.COM
 PHONE: 610-375-1331 FAX: 610-375-4655
 1522 PENN AVENUE WYOMISSING, PA 19380
 WWW.MEISTER-COX.COM

GUESTROOM - KING (MOBILITY - ROLL IN)
 HOLIDAY INN EXPRESS & SUITES
 INTERSECTION OF HAYNES PLACE & LAMM RD.
 WILSON, NC 27893

STATUS: BIDDING
 PROJ. DATE: 06-07-19
 PROJ. NO: 18-176
 PRINTED: 6/7/2019 7:11:10 PM
 DRAWN BY: RFF
 CHECKED BY: TGC
 SHEET NO. **A411**
 SCALE: 1/4" = 1'-0"

