

REFLECTED CEILING PLAN NOTES

- LEVEL 1 GYB-RC CEILING AT 11'-0" IS CONTINUOUS, WITH THE EXCEPTION OF ENCLOSING STEEL BEAMS AND LOAD BEARING WALLS, ABOVE ALL ACT AND GYB-CLG CEILINGS.
- LEVELS 2, 3 AND 4 GYB CLG CEILING AT 8'-0" IS CONTINUOUS ABOVE ACT CEILINGS WITH THE EXCEPTION OF LOAD BEARING WALLS.
- REFER TO MEP DWGS FOR ADDITIONAL LIGHT, HVAC AND PLUMBING FIXTURE TYPES AND SPECIFICATIONS.
- SEE ENLARGED GUESTROOM PLANS FOR MORE INFORMATION.
- RECESSED LIGHT AND OTHER FIXTURES PENETRATING RATED HORIZONTAL FLOOR/CEILING ASSEMBLY REQUIRES GYB HOUSING, SEE A760/15.

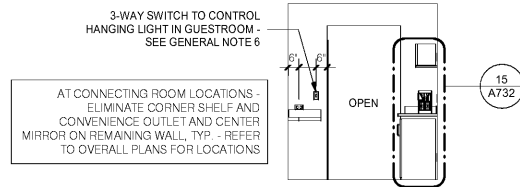
ENLARGED PLAN GENERAL NOTES:

- SEE SHEET A400 FOR TYPICAL MOUNTING HEIGHTS.
- SEE ARCHITECTURAL MANUAL FOR FINISHES, MATERIAL AND BUILDING AND BATHROOM ACCESSORY SPECIFICATIONS.
- PAIN MAY BE SUBSTITUTED FOR WALLCOVERING, SEE SPECIFICATIONS.
- SEE ELECTRICAL DRAWINGS FOR ADDITIONAL HEARING IMPAIRED ROOM DEVICES.
- PROVIDE BACKING AND BLOCKING FOR EQUIPMENT AND FURNITURE AS REQUIRED BY MANUFACTURER.
- COORDINATE W/ FF&E PROVIDER TO PROVIDE EXG-402 LIGHT FIXTURE WHICH DOES NOT HAVE A BUILT IN ROCKER SWITCH. LIGHT FIXTURE WILL BE A PLUG IN FIXTURE, AND WILL BE CONTROLLED BY THREE WAY LIGHT SWITCHES AT THE VESTIBULE AND IN THE GUESTROOM. REFER TO ELEVATIONS AND ELECTRICAL DRAWINGS FOR SWITCH LOCATIONS.
- PROVIDE DOOR PRIVACY LATCH WHICH ALLOWS THE DOOR TO CLOSE AND LATCH AT ALL TIMES. DOOR MAY NOT BE PROPPED OPEN USING PRIVACY LATCH (SWING BAR TYPE LATCH NOT PERMITTED).

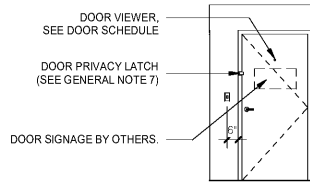
SUBSTITUTION LIST

SPECIFIED	APPROVED FOR SUBSTITUTION
EXG-WC1	EXG-PT1
EXG-WC2	EXG-PT1 OR EXG-AK1
EXG-WC3	EXG-PT4 OR EXG-AK2
EXG-WC4	EXG-PT5 OR EXG-AK3
EXG-VF1	EXG-T1
EXG-B1	EXG-B5

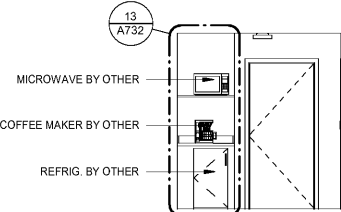
NOTE: THE ELECTRICAL CONTRACTOR IS RESPONSIBLE FOR COORDINATING ALL RECEPTACLE LOCATIONS W/ FF&E PACKAGE. REFER TO FF&E SHOP DRAWINGS FOR LATEST REQUIREMENTS.



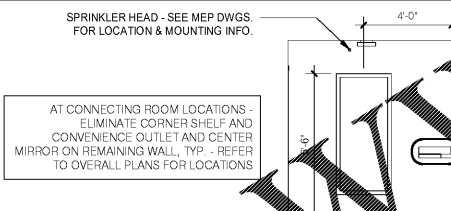
11 KING - ENTRY - DOOR OPENING
1/4" = 1'-0"



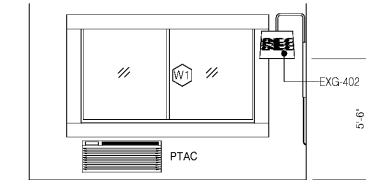
10 KING - ENTRY - DOOR
1/4" = 1'-0"



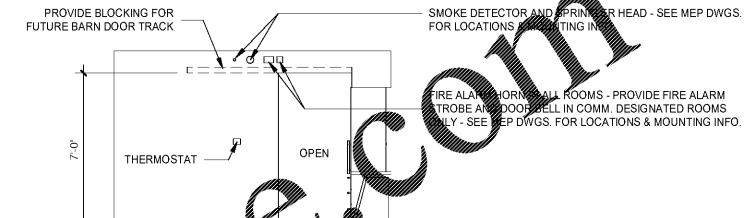
9 KING - ENTRY - REFRESHMENTS
1/4" = 1'-0"



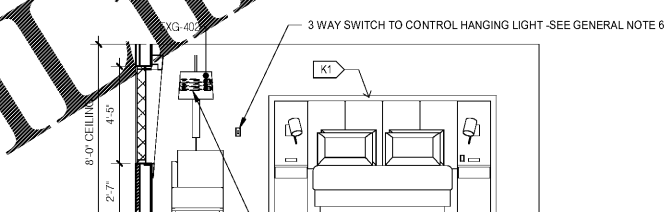
8 KING - ENTRY - MIRROR
1/4" = 1'-0"



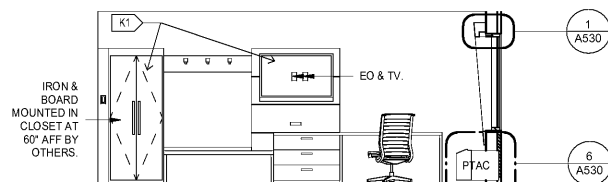
7 KING - WINDOW
1/4" = 1'-0"



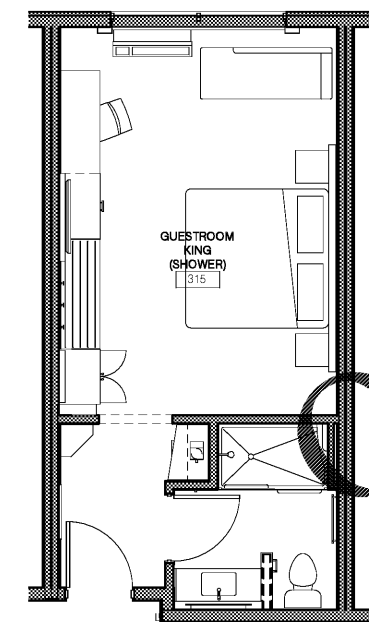
6 KING - DOOR OPENING
1/4" = 1'-0"



5 KING - BED
1/4" = 1'-0"

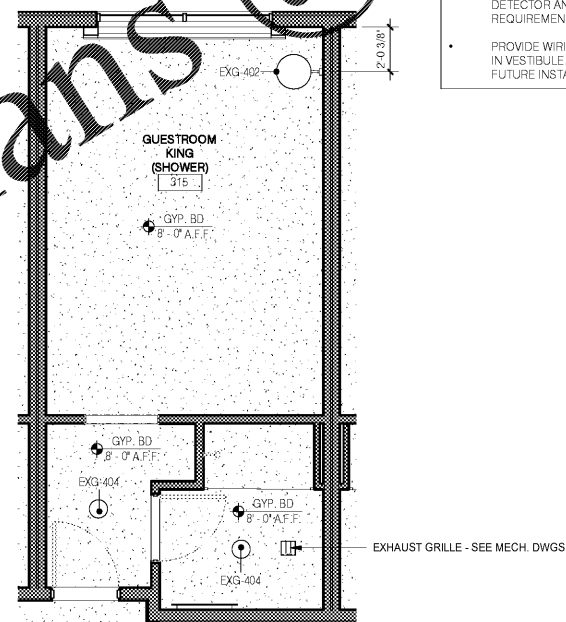


4 KING - RACK
1/4" = 1'-0"



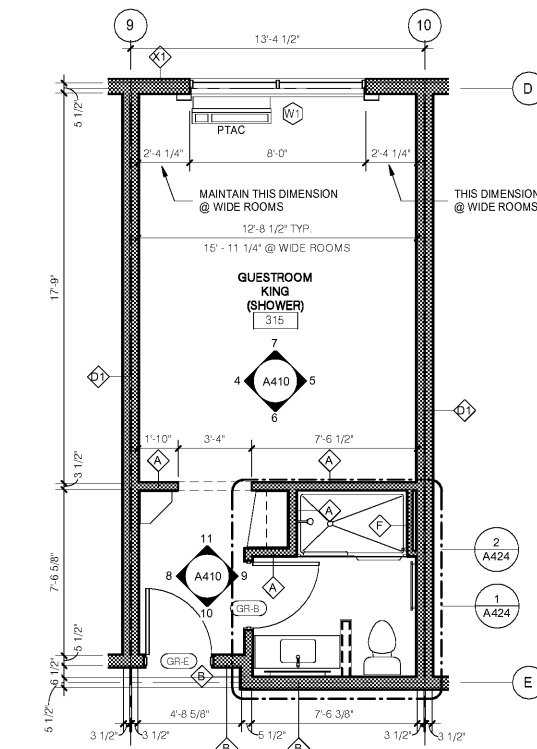
3 GUESTROOM - KING - FURNITURE
1/4" = 1'-0"

NOTE: FURNITURE LAYOUT IS PROVIDED FOR REFERENCE ONLY. INTERIOR DESIGN DRAWINGS SUPERCEDE THESE DRAWINGS.



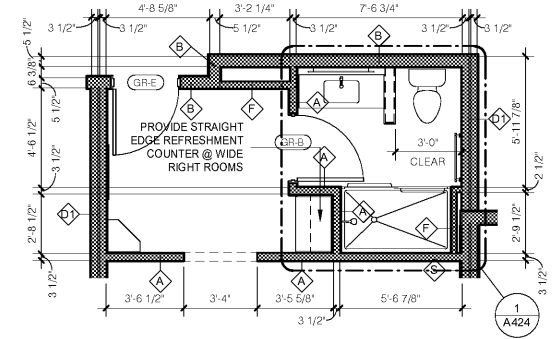
2 GUESTROOM - KING - RCP
1/4" = 1'-0"

- RCP NOTES:**
- SEE ELECTRICAL PLANS FOR LIGHT TYPES AND SPECS.
 - SEE MEP DRAWINGS FOR SMOKE / CO DETECTOR AND SPRINKLER HEAD REQUIREMENTS.
 - PROVIDE WIRING FOR SMOKE DETECTOR IN VESTIBULE. COVER W/ BLANK PLATE FOR FUTURE INSTALLATION.



1 GUESTROOM - KING
1/4" = 1'-0"

- NOTES:**
- KING WIDE ROOMS (LEFT AND RIGHT) ARE SIMILAR TO STANDARD KING ROOMS. THE BATHROOM AND VESTIBULE LAYOUT FOR WIDE LEFT ROOMS IS IDENTICAL TO STANDARD ROOMS. SEE BELOW FOR MODIFIED VESTIBULE DIMENSIONS AT WIDE RIGHT ROOMS.
 - REFER TO OVERALL PLANS FOR BATHTUB VS. SHOWER LOCATIONS. SEE DRAWING A424 FOR GUESTROOM BATHROOM DETAILS & ELEVATIONS.
 - WIDE LEFT ROOM LOCATIONS: 201, 301, 401
 - WIDE RIGHT ROOM LOCATIONS: 326, 426
 - REFER TO OVERALL PLANS.
 - AT CONNECTING ROOM LOCATIONS - ELIMINATE CORNER SHELF AND CONVENIENCE OUTLET AND CENTER MIRROR ON REMAINING WALL, TYP. - REFER TO OVERALL PLANS FOR LOCATIONS



1A GUESTROOM - KING WIDE (RIGHT) - BATHROOM
1/4" = 1'-0"

No.	Description	Date

DISCLAIMER: PC is provided by agreement with certain parties, materials stored electronically. The parties recognize that data, plans, specifications, reports, drawings, etc. are subject to unauthorized alteration, copying, transmission, conversion, media degradation, software error or human alteration. Accordingly, all such documents are deemed to be the property of the provider. Any reliance thereon is deemed to be solely the responsibility of the user. Stripped hard copies of the Architect's instruments of service are the only true documents of record.

MEISTER-COX ARCHITECTS

INFO@MEISTER-COX.COM
PHONE: 610-375-1331 FAX: 610-375-4655
1522 PENN AVENUE WYOMISSING, PA 19380
WWW.MEISTER-COX.COM

GUESTROOM - KING

HOLIDAY INN EXPRESS & SUITES
INTERSECTION OF HAYNES PLACE & LAMM RD.
WILSON, NC 27893

STATUS: BIDDING
PROJ. DATE: 06-07-19
PROJ. NO: 18-176
PRINTED: 6/7/2019 7:11:08 PM
DRAWN BY: RFF
CHECKED BY: TGC

SHEET NO.
A410
SCALE: 1/4" = 1'-0"