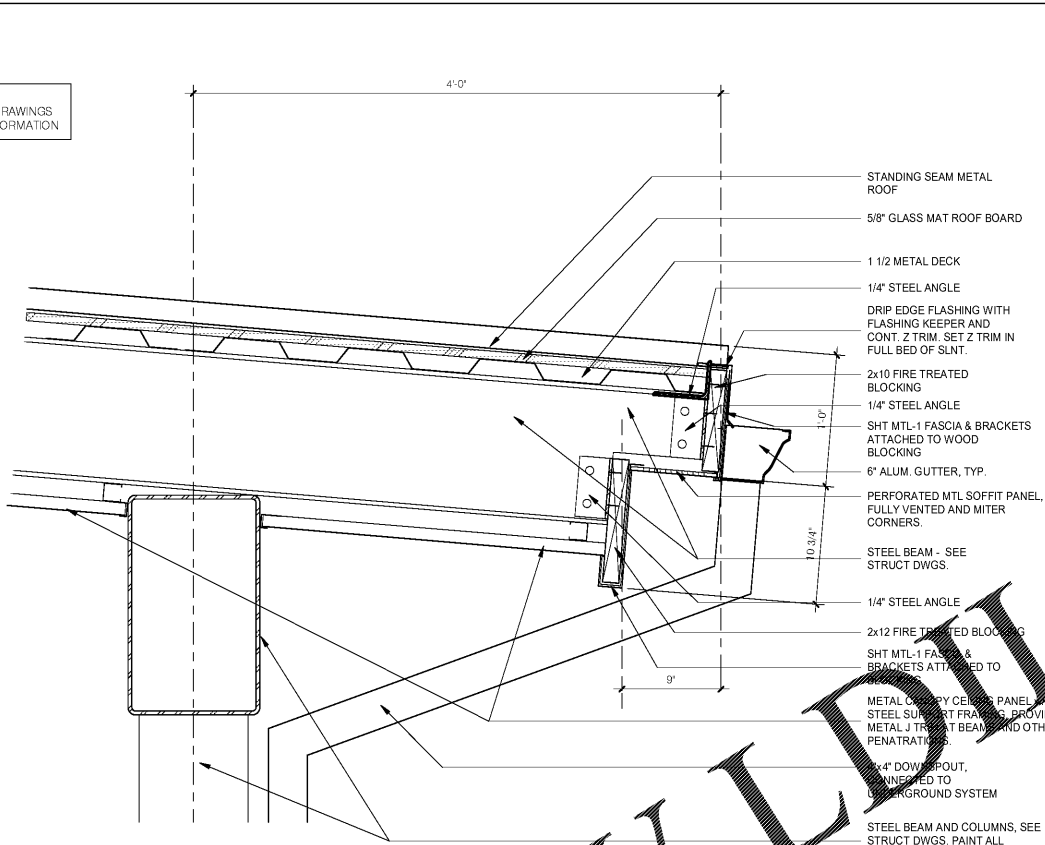
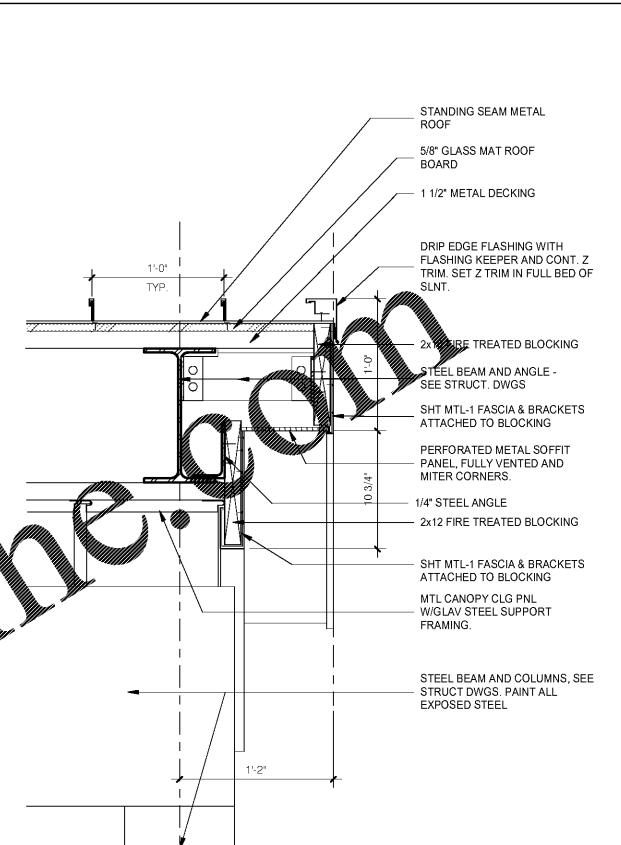


1 CANOPY EDGE HIGH END  
1 1/2" = 1'-0"

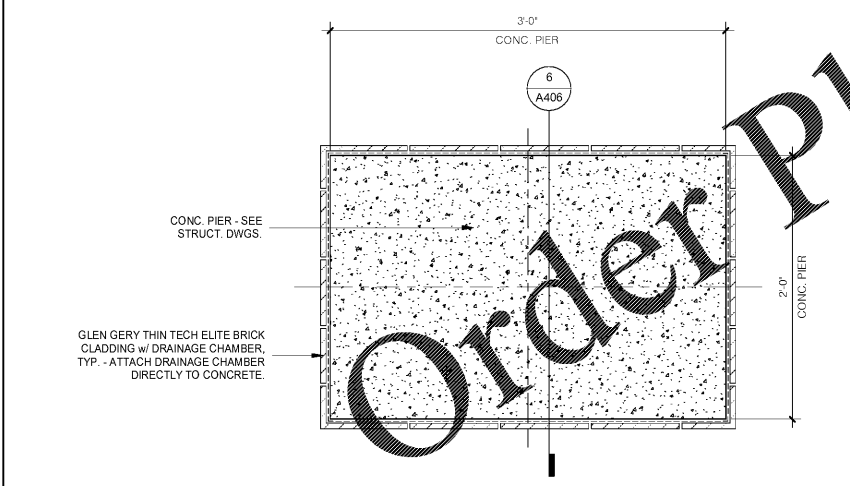
**NOTE:**  
SEE STRUCTURAL DRAWINGS  
FOR ADDITIONAL INFORMATION



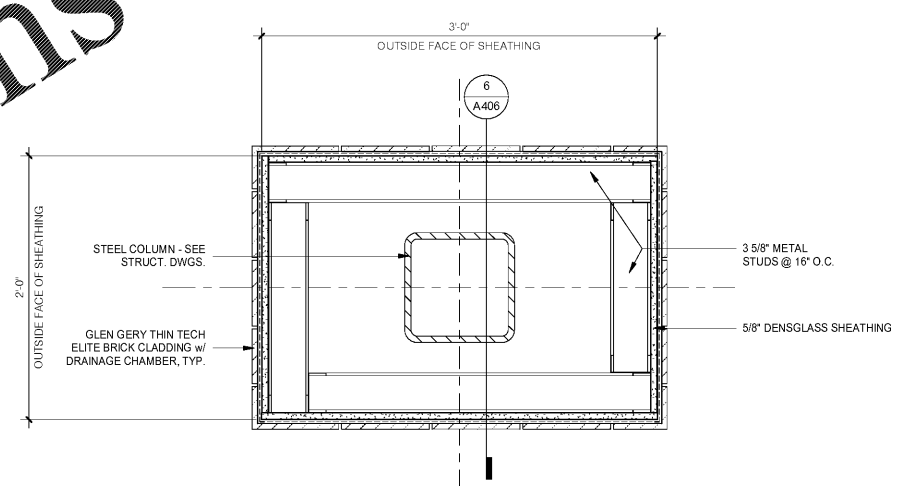
2 CANOPY EDGE LOW END  
1 1/2" = 1'-0"



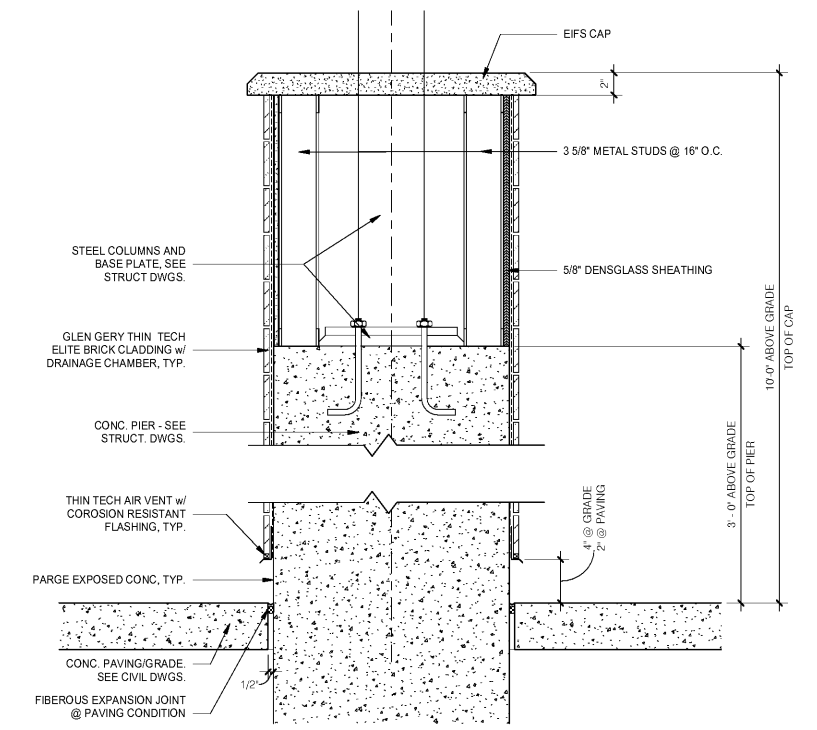
3 CANOPY EDGE  
1 1/2" = 1'-0"



4 CANOPY COLUMN PLAN  
1 1/2" = 1'-0"



5 CANOPY COLUMN PLAN @ METAL STUDS  
1 1/2" = 1'-0"



6 CANOPY COLUMN SECTION  
1 1/2" = 1'-0"

No.	Description	Date

DISCLAIMER: This drawing is provided by agreement with certain parties, materials, methods, etc. The parties recognize that data, plans, specifications, reports, drawings, etc. are subject to change without notice. The parties are not responsible for any errors or omissions in this drawing. The parties are not responsible for any damage or injury resulting from the use of this drawing. The parties are not responsible for any damage or injury resulting from the use of this drawing. The parties are not responsible for any damage or injury resulting from the use of this drawing.

**MEISTER COX ARCHITECTS**  
 INFO@MEISTER-COX.COM  
 PHONE: 610-375-1331 FAX: 610-375-4655  
 1522 PENN AVENUE WYOMISSING, PA 19380  
 WWW.MEISTER-COX.COM

**CANOPY CONSTRUCTION DETAILS**  
**HOLIDAY INN EXPRESS & SUITES**  
 INTERSECTION OF HAYNES PLACE & LAMM RD.  
 WILSON, NC 27893

STATUS:	BIDDING
PROJ. DATE:	06-07-19
PROJ. NO.:	18-176
PRINTED:	6/7/2019 7:11:06 PM
DRAWN BY:	RFF
CHECKED BY:	TGC
SHEET NO.:	A406
SCALE:	1 1/2" = 1'-0"

