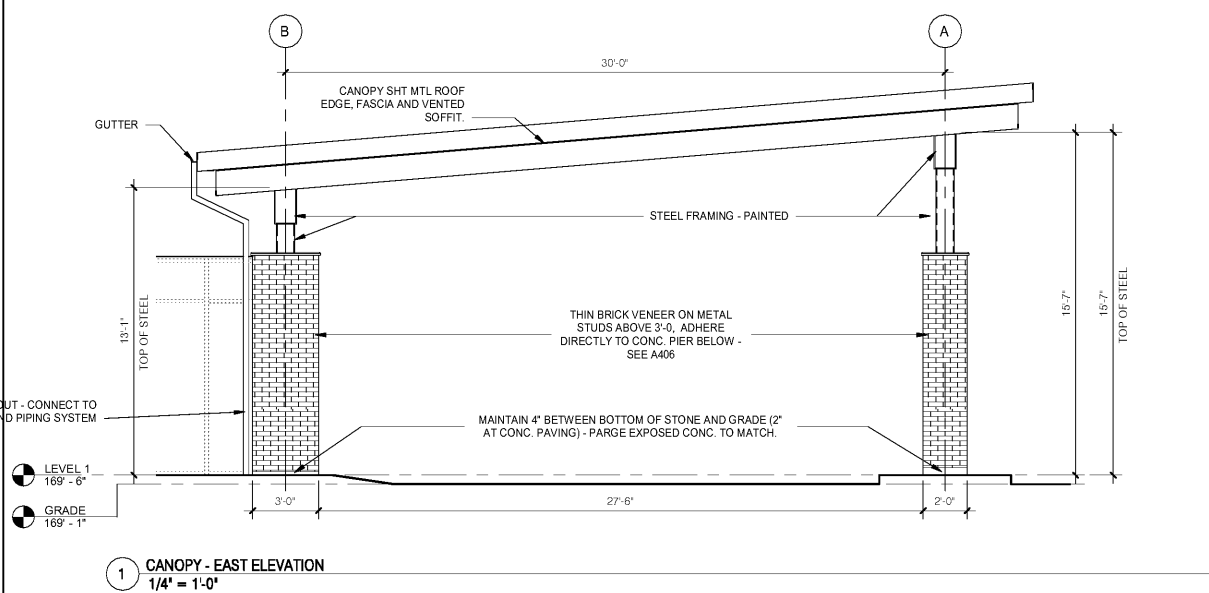
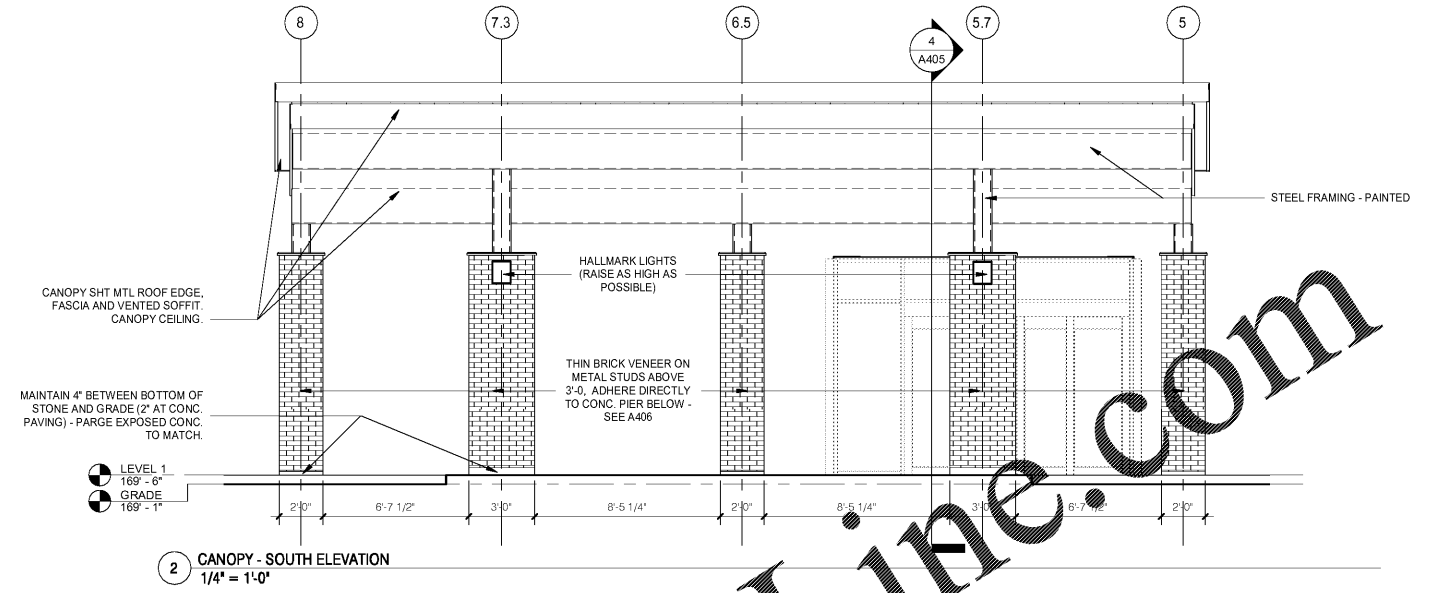


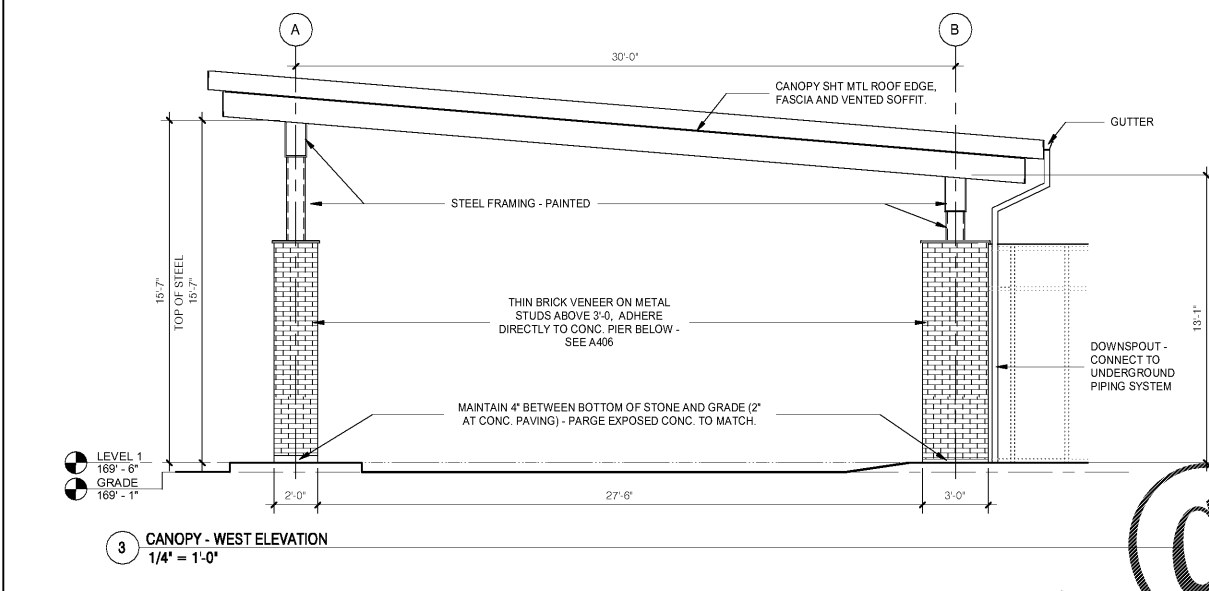
N:\Active Projects\hospitality\018 Holiday Inn Express - Wilson, NC\Drawings CAD-Rev\18-176.rvt



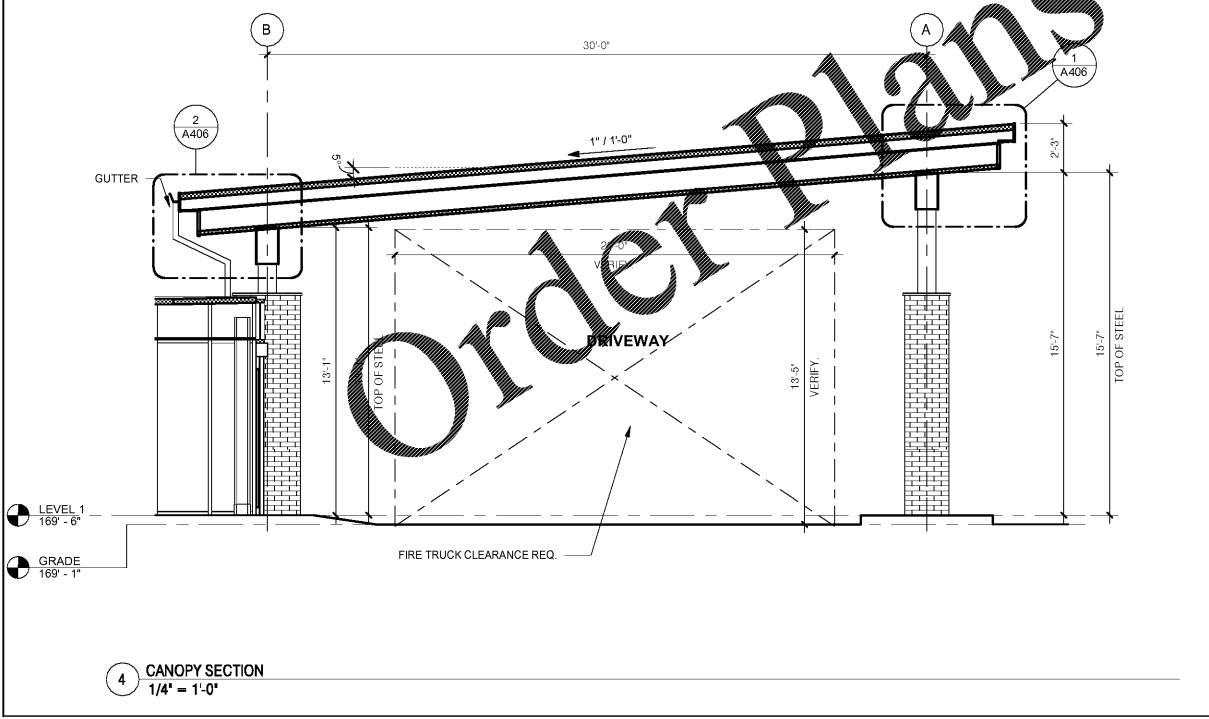
1 CANOPY - EAST ELEVATION  
1/4" = 1'-0"



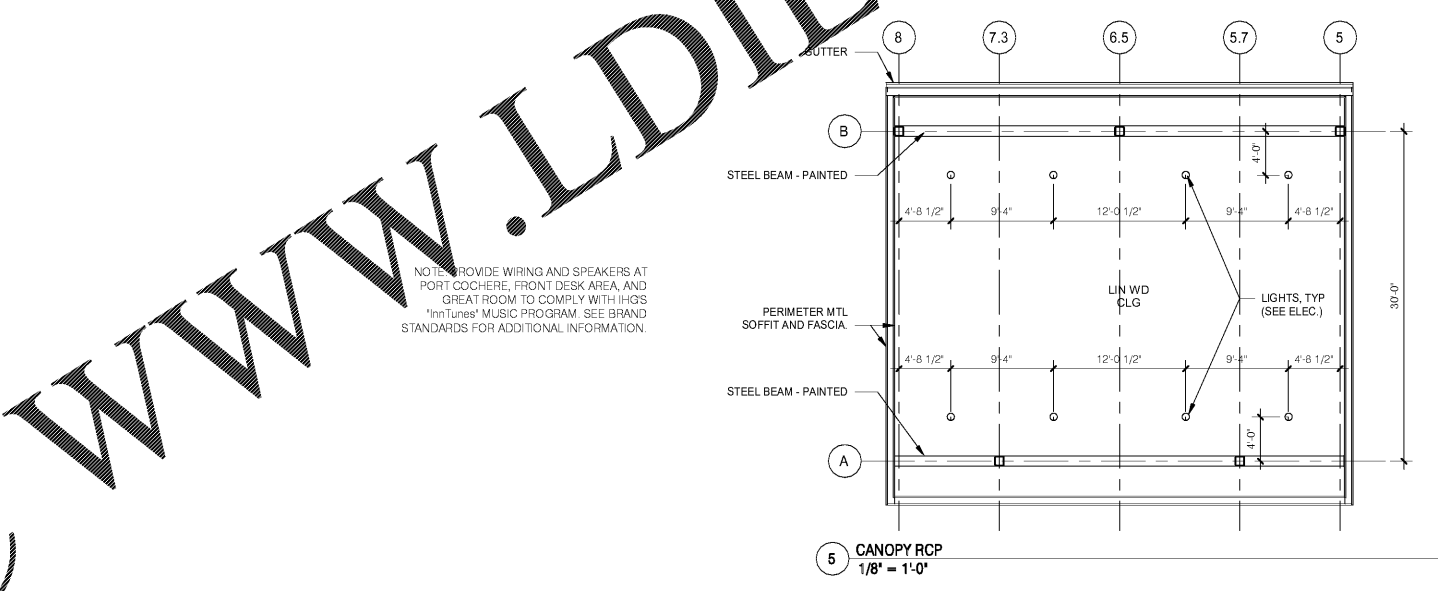
2 CANOPY - SOUTH ELEVATION  
1/4" = 1'-0"



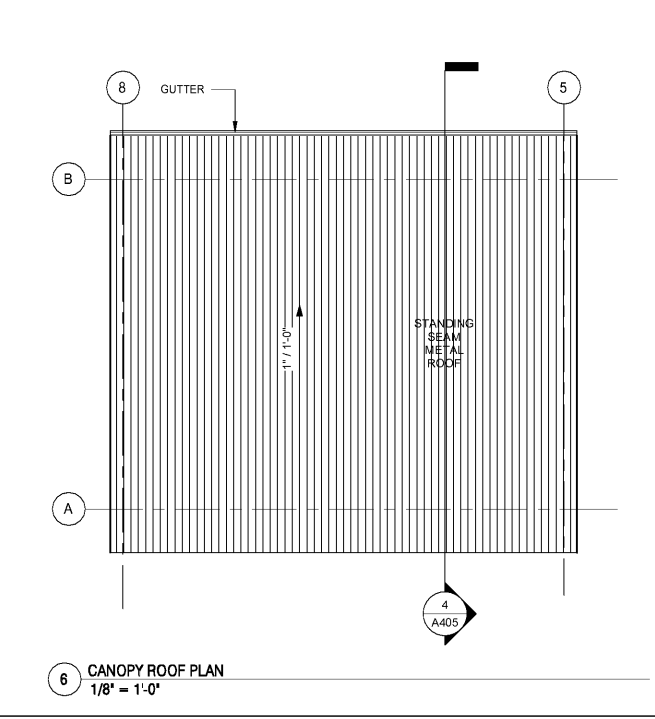
3 CANOPY - WEST ELEVATION  
1/4" = 1'-0"



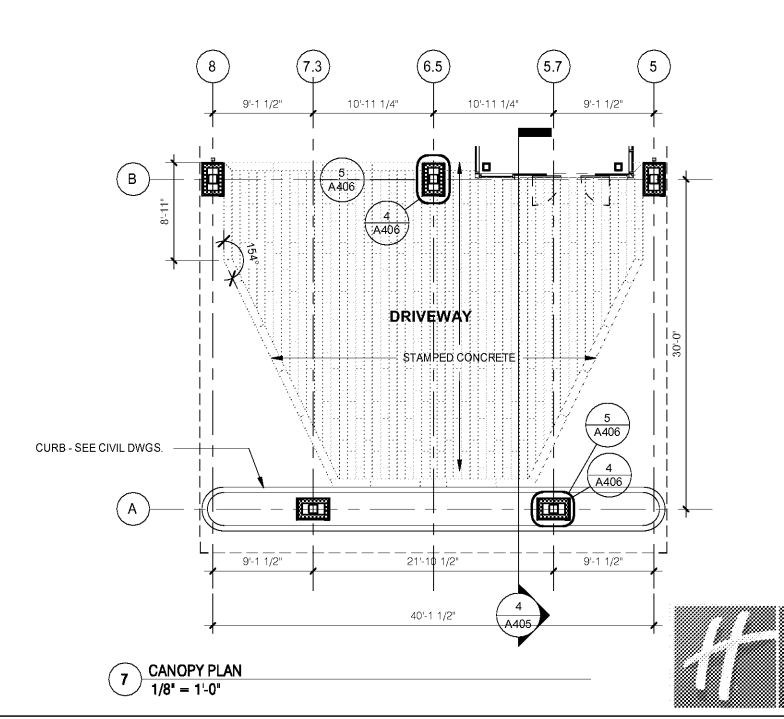
4 CANOPY SECTION  
1/4" = 1'-0"



5 CANOPY RCP  
1/8" = 1'-0"



6 CANOPY ROOF PLAN  
1/8" = 1'-0"



7 CANOPY PLAN  
1/8" = 1'-0"

WWW.LDILINE.COM

No.	Description	Date

MEISTER-COX ARCHITECTS  
 INFO@MEISTER-COX.COM  
 PHONE: 610-375-1331 FAX: 610-375-4655  
 1522 PENN AVENUE WYOMISSING, PA 19380  
 WWW.MEISTER-COX.COM

CANOPY PLANS, SECTION, AND ELEVATIONS  
 HOLIDAY INN EXPRESS & SUITES  
 INTERSECTION OF HAYNES PLACE & LAMM RD.  
 WILSON, NC 27893

STATUS: BIDDING  
 PROJ. DATE: 06-07-19  
 PROJ. NO: 18-176  
 PRINTED: 6/7/2019 7:11:05 PM  
 DRAWN BY: RFF  
 CHECKED BY: TGC  
 SHEET NO. A405  
 SCALE: As indicated

