

**BUILDING AND BATHROOM ACCESSORY PRODUCT SELECTION SCHEDULE**

- CH-1: Bobrick B-6707 satin finished stainless steel finished single utility/coat hook.
- CH-S: Bobrick B-232x24 satin finished stainless steel finished coat hook strip 24" long with 3 hooks.
- CG-1: C-S Group VA-200N Acrovyn 4000 series 1-1/2" corner guard set 4" AFFL or too match room base. Color: 933 Mission White.
- CG-2: C-S Group VA-200N Acrovyn 4000 series 1-1/2" corner guard set 4" AFFL or too match room base. Color: Danube 233.
- CG-3: C-S Group VA-200N Acrovyn 4000 series 1-1/2" corner guard set 4" AFFL or too match room base. Color: Russet #321.
- CG-4: C-S Group VA-200N Acrovyn 4000 series 1-1/2" corner guard set 4" AFFL or too match room base. Color: Celery #311.
- DCS: Bobrick KB110-SSWM horizontal surface mounted baby/diaper changing station with satin stainless steel veneer. Color SST/Grey.
- FSB: Bobrick B-5181 reversible ADA compliant folding shower bench/seat.
- GB: Bobrick B-6806 99 series peened satin stainless steel finished grab bars for accessible toilet and shower stalls, size varies.
- MIR FR SH: Bobrick B-292 1830 series welded satin stainless steel finish framed mirror with 5" shelf, 18" x 30".
- MOP-1: Bobrick B-239 satin stainless steel finished mop and broom holder with utility shelf.
- PC: Personal Computer or Monitor wall mounting bracket provided by owner.
- PTC: Bobrick B-262 classic series satin stainless steel finished surface mounted paper towel cabinet for folded paper.
- SDISP: Bobrick B-2111 classic series surface mounted soap dispensers with satin stainless steel finish.
- SND: Bobrick B-270 confura series surface mounted satin stainless steel finish sanitary napkin dispenser.
- TPH: Bobrick B-6867 classic series surface mounted satin stainless steel finish two roll toilet paper holder.
- US-1: Bobrick B-298 satin stainless steel finished utility shelf 8" x 24".

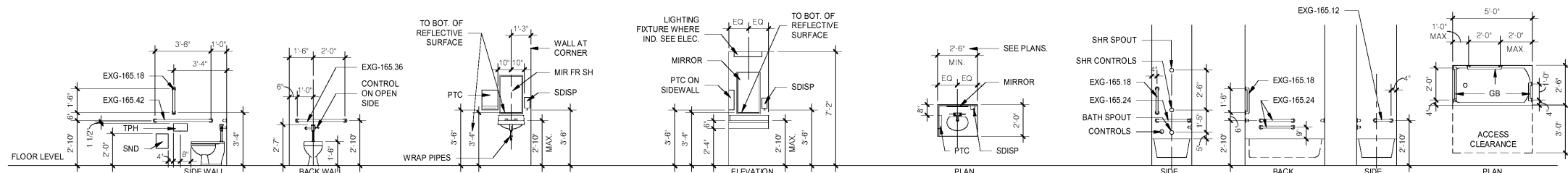
**FIRE PROTECTION PRODUCTS**

- FIRE EXTINGUISHER CABINET (FEC)**
- JL INDUSTRIES AMBASSADOR SERIES SEMI RECESSED CABINET. STEEL CONSTRUCTION, COLOR WHITE.
- TUBE SIZE 10 1/2" X 24" X 5 1/2" WITH 1 1/2" SQUARE EDGE TRIM.
- VERTICAL DUO STYLE DOOR WITH SAFETY GLASS AND VERTICAL DOOR PULL.
- ETCHED VERTICAL LETTERING ON GLASS PANEL.
- 1 HOUR FIRE RATED WHERE LOCATED IN 1 HOUR RATED WALLS.
- PROVIDE FIRE EXTINGUISHER AS SPECIFIED.

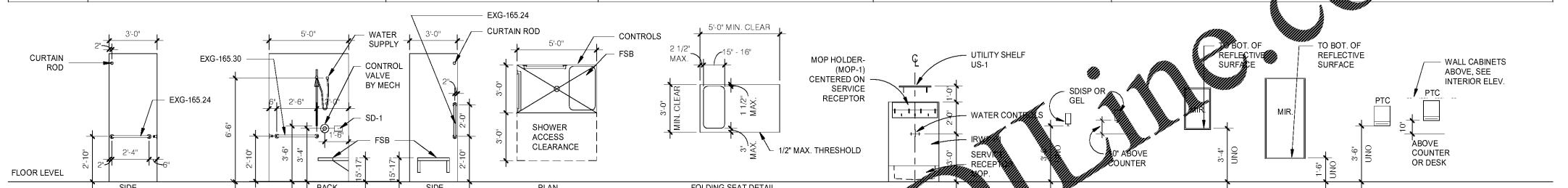
**TYPICAL MOUNTING HEIGHT GENERAL NOTES**

- PROVIDE EQUIPMENT, FIXTURE AND FITTING SUPPORT WOOD OR SHEET METAL BLOCKING IN ACCORDANCE WITH MANUFACTURERS INSTRUCTIONS AND RECOMMENDATIONS, TYP. UNO. SEE ALSO TYPICAL PARTITION BLOCKING DETAILS A900.
- REFER TO PLANS AND SPECIFIC ELEVATION FOR EQUIPMENT, FIXTURE AND FITTING LOCATIONS.

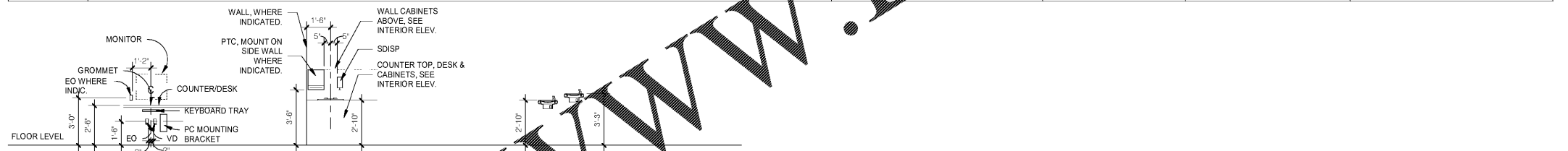
**NOTE: SEE ADA SHEET FOR ADDITIONAL CLEARANCES AND INFORMATION.**



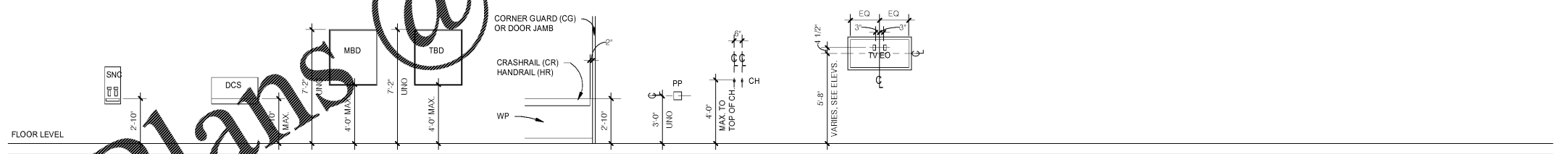
DESCRIPTION	TOILET/WATER CLOSETS ACCESSIBLE	LAVATORY BASIN/BATHROOMS	BATHROOM SINK	LAVATORY BASIN/HANDWASH STATION	BATHTUB
NOTES:	<ol style="list-style-type: none"> <li>SND - SANITARY NAPKIN DISPOSAL. PROVIDE AT UNISEX, &amp; WOMEN'S PATIENT BATHROOMS ONLY.</li> <li>GB - GRAB BARS. AT NON-ACCESSIBLE WATER CLOSETS OMIT GRAB BARS.</li> <li>FLUSH VALVE/CONTROL MUST BE LOCATED ON THE OUTSIDE OR WIDE SIDE OF THE TOILET.</li> <li>GB BLKG TO BE DESIGNED FOR 250 LB LAT. AND DEAD LOADS.</li> </ol>	<ol style="list-style-type: none"> <li>SEE PLAN FOR SPECIFIC LOCATION CONDITION</li> <li>SDISD &amp; PTC-BY OWNER, INSTALLED BY CONTRACTOR</li> <li>ENSURE MIN. 2'-3" X 8" DEEP KNEE SPACE.</li> <li>EXPOSED HOT AND COLD WATER PIPES ARE TO BE INSULATED.</li> </ol>	<ol style="list-style-type: none"> <li>SEE PLAN FOR SPECIFIC LOCATION CONDITION</li> <li>SDISD &amp; PTC-BY OWNER, INSTALLED BY CONTRACTOR</li> <li>ENSURE MIN. 2'-3" X 8" DEEP KNEE SPACE.</li> <li>EXPOSED HOT AND COLD WATER PIPES ARE TO BE INSULATED.</li> </ol>	<ol style="list-style-type: none"> <li>SEE PLAN FOR SPECIFIC LOCATION CONDITION</li> <li>SDISD &amp; PTC BY OWNER, INSTALLED BY CONTRACTOR</li> <li>ENSURE MIN. 2'-3" X 8" DEEP KNEE SPACE.</li> <li>EXPOSED HOT AND COLD WATER PIPES ARE TO BE INSULATED.</li> </ol>	<ol style="list-style-type: none"> <li>REMOVABLE BATHTUB SEAT TO BE PROVIDED WITH BATHTUB.</li> <li>BATHTUB SEAT SHALL BE 17"-19" ABOVE FINISHED FLOOR, MEASURED TO TOP OF SEAT, AND SHALL BE 15" MIN. AND 16" MAX. IN DEPTH. SEAT SHALL BE CAPABLE OF SECURE PLACEMENT.</li> <li>A SHOWER SPRAY UNIT WITH A HOSE 59 INCHES LONG MINIMUM SHALL BE PROVIDED BOTH AS A FIXED-POSITION SHOWER HEAD AND AS A HAND-HELD SHOWER HEAD. SHOWER SPRAY UNIT SHALL HAVE AN ON/OFF CONTROL WITH A NON-POSITIVE SHUT-OFF. AN ADJUSTABLE-HEIGHT SHOWER HEAD ON A VERTICAL BAR IS USED, THE SPRAY SHALL BE INSTALLED AS NOT TO OBSTRUCT THE USE OF GRAB BARS. THE SLIDING MECHANISM SHALL BE OPERABLE WITH ONE HAND WITHOUT TIGHT GRASPING OR TWISTING OF THE WRIST. MAX. 5 LB FORCE TO OPERATE.</li> <li>SHOWER SPRAY UNIT SHALL DELIVER WATER THAT IS 120 DEGREES MAXIMUM IN TEMPERATURE.</li> <li>GB BLKG TO BE DESIGNED FOR 250 LB LAT. AND DEAD LOADS.</li> </ol>



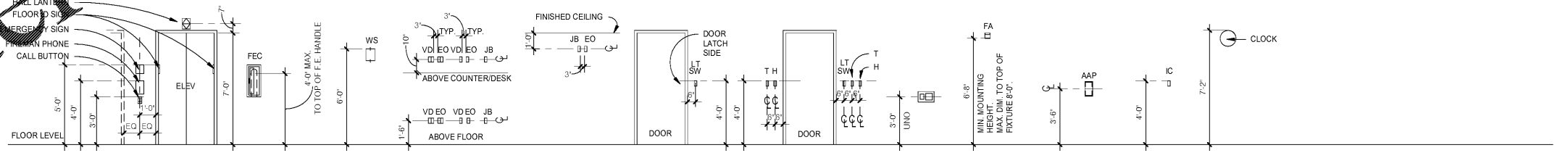
DESCRIPTION	ACCESSIBLE SHOWER - ROLL IN SHOWER WITH SEAT	HOUSEKEEPING CLOSET	SOAP/GEL/FOAM DISP.	MIRROR	MIR-8	PAPER TOWEL CAB/WR
NOTES:	<ol style="list-style-type: none"> <li>36" X 60" CLEAR ACCESSIBLE STANDARD ROLL IN SHOWER. DIMENSIONS ARE MINIMUM CLEAR INSIDE INCLUDING FINISHES.</li> <li>A SHOWER SPRAY UNIT WITH A HOSE 59 INCHES LONG MINIMUM THAT CAN BE USED BOTH AS A FIXED-POSITION SHOWER HEAD AND AS A HAND-HELD SHOWER SHALL BE PROVIDED. THE SHOWER SPRAY UNIT SHALL HAVE AN ON/OFF CONTROL WITH A NON-POSITIVE SHUT-OFF. IF AN ADJUSTABLE-HEIGHT SHOWER HEAD ON A VERTICAL BAR IS USED, THE BAR SHALL BE INSTALLED SO AS NOT TO OBSTRUCT THE USE OF GRAB BARS. THE SLIDING MECHANISM SHALL BE OPERABLE WITH ONE HAND WITHOUT TIGHT GRASPING OR TWISTING OF THE WRIST. MAX. 5 LB FORCE TO OPERATE.</li> <li>SHOWER SPRAY UNIT SHALL DELIVER WATER THAT IS 120 DEGREES MAXIMUM IN TEMPERATURE.</li> <li>GB BLKG TO BE DESIGNED FOR 250 LB LAT. AND DEAD LOADS.</li> <li>THRESHOLDS IN ROLL IN SHOWER COMPARTMENTS SHALL BE 1/2" MAX. IN HEIGHT.</li> </ol>	<ol style="list-style-type: none"> <li>UTILITY SHELF (LONG UNO) WATER CONTROLS AND SERVICE RECEPTOR, REFER TO MECHANICAL DRAWINGS.</li> </ol>	<ol style="list-style-type: none"> <li>XXX</li> </ol>	<ol style="list-style-type: none"> <li>SEE PLANS FOR MIRROR TYPE</li> <li>MIR-1 = 18" X 30" UNO</li> <li>MIR-8 = 30" X 60" UNO</li> <li>MOUNTING HEIGHT TO BOTTOM OF GLASS, TYP. UNO.</li> </ol>	<ol style="list-style-type: none"> <li>MOUNTING HEIGHT IS INDICATED FOR A BOTTOM DISPENSING CABINET. MAX PAPER SOURCE HEIGHT IS 48".</li> </ol>	



DESCRIPTION	PC WORK STATION	COUNTER TOP SINK	DF, DRINKING FOUNTAIN, SPOUT, ELECTRIC WATER COOLER
NOTES:		<ol style="list-style-type: none"> <li>SEE PLAN FOR SPECIFIC LOCATION CONDITION</li> <li>SDISD &amp; PTC-BY OWNER, INSTALLED BY CONTRACTOR</li> <li>ENSURE MIN. 2'-3" X 8" DEEP KNEE SPACE.</li> <li>EXPOSED HOT AND COLD WATER PIPES ARE TO BE INSULATED.</li> </ol>	<ol style="list-style-type: none"> <li>WHEN A SINGLE DRINKING FOUNTAIN IS REQUIRED IT SHALL BE INSTALLED AS AN ACCESSIBLE DF.</li> <li>ENSURE MIN. 2'-3" X 8" DEEP KNEE SPACE.</li> <li>SPOUT HEIGHT FOR ADA IS MAX 36" AFL. FOR STANDING PEOPLE SPOUT MOUNTING HEIGHT IS 38"-43" AFL.</li> </ol>



DESCRIPTION	SANITARY NAPKIN CABINET	DIAPER CHANGING STATION	MARKER BOARD	TACK BOARD	HANDRAIL/CRASH RAILS	PUSH PLATE	COAT HOOKS	FLAT TV SCREEN
NOTES:	<ol style="list-style-type: none"> <li>ENSURE MIN. 4'-0" HIGH OPERABLE CONTROLS AFL.</li> </ol>	<ol style="list-style-type: none"> <li>ENSURE MIN. 2'-3" HIGH X 4'-0" DEEP KNEE SPACE.</li> <li>PULL DOWN HANDLE TO BE LOCATED 48" MAX AFL.</li> </ol>	REFER TO ELEV. FOR SPEC. NUMBER AND SIZE.	REFER TO ELEV. FOR SPEC. NUMBER AND SIZE.	HANDRAIL (HR) OR CRASH RAIL (WP), SEE DETAILS ON SHEET A4.x.01/25,26, AND 27.		6" SEPARATION AT DOUBLE COAT HOOK CONDITION (TYP)	VERIFY DIMENSIONS AND PROVIDE PARTITION BLOCKING TV AND EO, REFER TO MANUF. INSTRUCTIONS. O.A. UNIT CAN NOT PROJECT MORE THAN 4" INTO CIRCULATION AREA.



DESCRIPTION	ELEVATOR	FEC	WALL SCONCE	ELECT/COMM OUTLETS	CCTV CAMERA OUTLETS	LIGHT SWITCH	THERMOSTAT/HUMIDISTAT	CARD READER	FIRE ALARM	ALARM ANNUCIATOR PANEL	INTERCOM	CLOCK
NOTES:	ELEVATOR CAB EMERGENCY CALL BUTTON MUST BE AT 35" AFL AND FLOOR BUTTONS MAY BE NO HIGHER THEN 48" AFL.		FIXTURES CAN NOT PROJECT INTO CORRIDOR MORE THAN 4"	MOUNT HEIGHTS SHOWN FOR ABOVE FLOOR AND ABOVE COUNTER UNO., REFER TO ELEVATIONS FOR LOCATIONS.				REFER ELECTRICAL AND COMMUNICATION DRAWINGS.				

Order Plans @ WWW.LEADLINE.COM

No.	Description	Date

DISCLAIMER: PC is provided by agreement with certain parties. Materials listed electronically. The parties recognize that data, plans, specifications, reports, drawings, and other documents are subject to modification, deletion, or replacement without notice. All documents are electronic and are not to be used for construction purposes only and not as an end product or as a record document. Any reliance thereon is deemed to be solely the responsibility of the user. Services are the only true documents of record.

**MEISTER COX ARCHITECTS**  
 INFO@MEISTER-COX.COM  
 PHONE: 610-375-1331 FAX: 610-375-4655  
 1522 PENN AVENUE WYOMISSING, PA 19380  
 WWW.MEISTER-COX.COM

**TYPICAL MOUNTING HEIGHTS**  
 HOLIDAY INN EXPRESS & SUITES  
 INTERSECTION OF HAYNES PLACE & LAMM RD.  
 WILSON, NC 27893

STATUS:	BIDDING
PROJ. DATE:	06-07-19
PROJ. NO.:	18-176
PRINTED:	6/7/2019 7:11:04 PM
DRAWN BY:	RFF
CHECKED BY:	TGC

SHEET NO. **A400**  
 SCALE: 1/4" = 1'-0"

