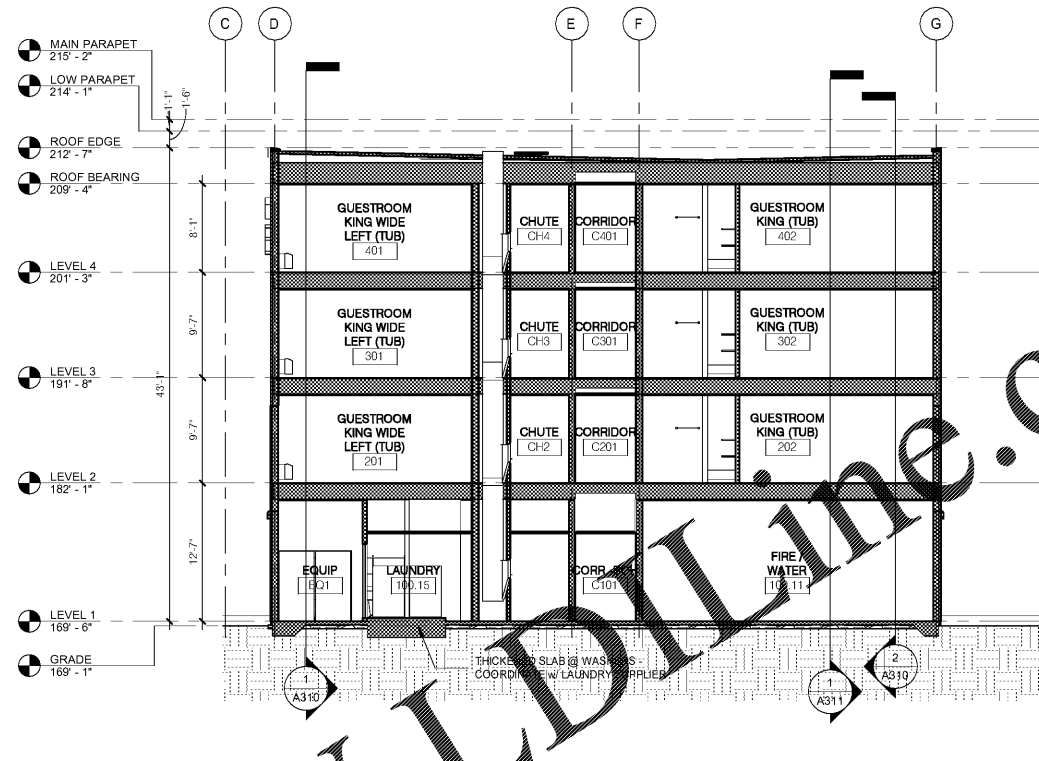
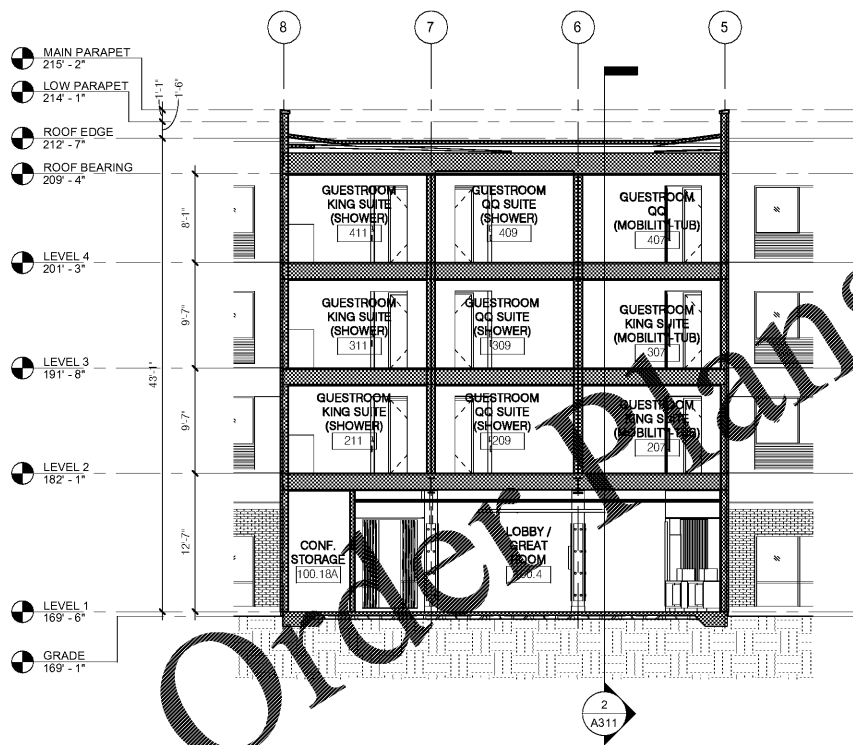


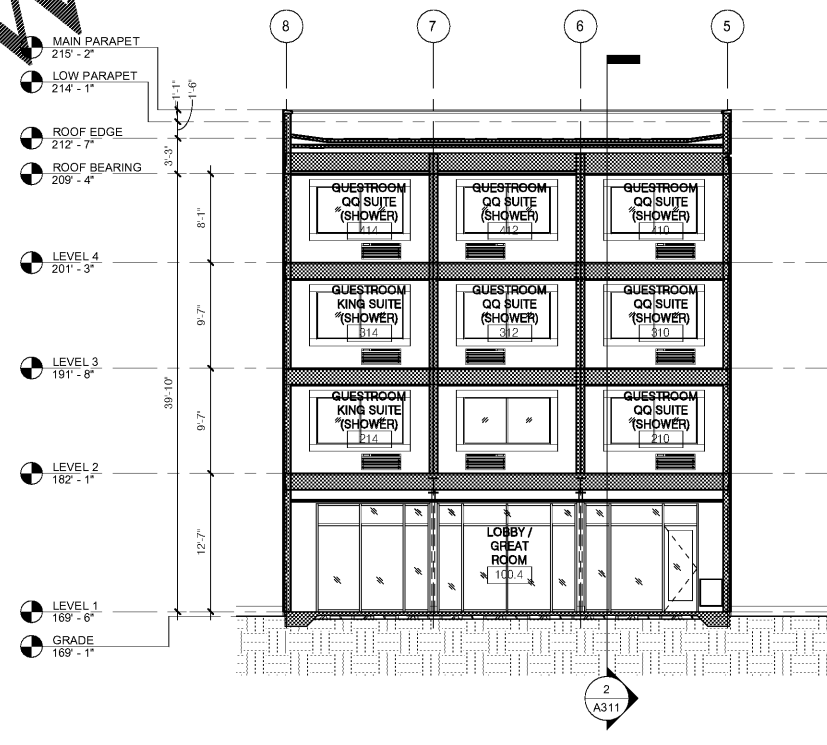
1 BLDG SECTION EAST  
1/8" = 1'-0"



2 BLDG SECTION WEST  
1/8" = 1'-0"



3 BLDG SECTION FRONT BUMP OUT  
1/8" = 1'-0"



4 BLDG SECTION REAR BUMP OUT  
1/8" = 1'-0"

[www.lldline.com](http://www.lldline.com)

No.	Description	Date

DISCLAIMER: PC is providing, by agreement with certain parties, materials stored electronically. The parties recognize that data, plans, specifications, reports, drawings, and other documents are subject to modification, deletion, or replacement without notice. The parties agree that the electronic documents are subject to modification, deletion, or replacement without notice. The parties agree that the electronic documents are subject to modification, deletion, or replacement without notice. The parties agree that the electronic documents are subject to modification, deletion, or replacement without notice.

**MEISTER-COX ARCHITECTS**  
 INFO@MEISTER-COX.COM  
 PHONE: 610-375-1331 FAX: 610-375-4665  
 1522 PENN AVENUE WYOMISSING, PA 19380  
 WWW.MEISTER-COX.COM

**BUILDING SECTIONS**  
 HOLIDAY INN EXPRESS & SUITES  
 INTERSECTION OF HAYNES PLACE & LAMM RD.  
 WILSON, NC 27789

STATUS:	BIDDING
PROJ. DATE:	06-07-19
PROJ. NO.:	18-176
PRINTED:	6/22/2019 10:54:50 AM
DRAWN BY:	RFF
CHECKED BY:	TGC
SHEET NO.:	A312
SCALE:	1/8" = 1'-0"

