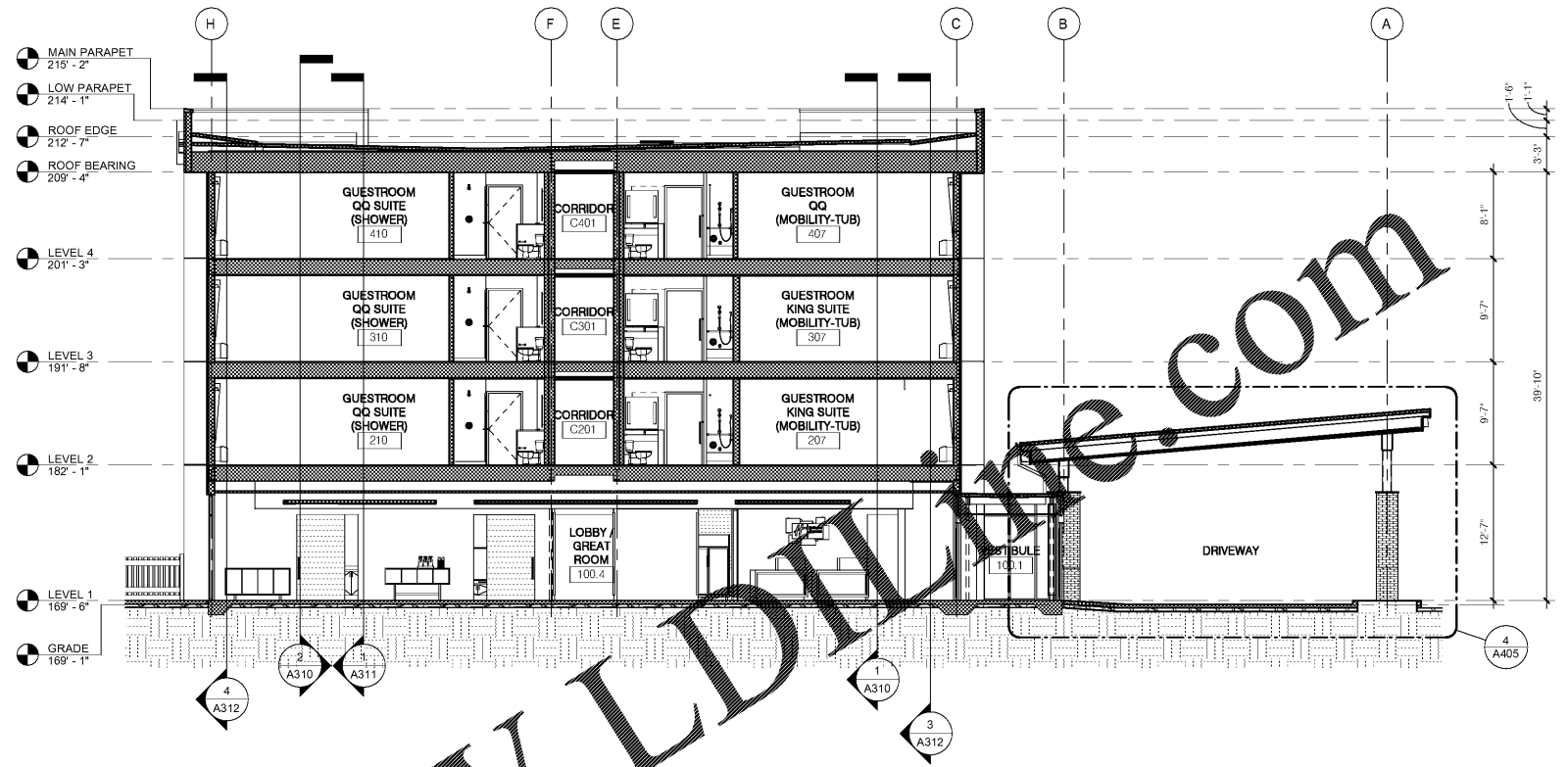


N:\Active Projects\hospitality\2018 Holiday Inn Express - Wilson, NC\Drawings CAD-Rev\18-176.rvt



2 BLDG SECTION 4
1/8" = 1'-0"



1 BLDG SECTION 3
1/8" = 1'-0"

No.	Description	Date

DISCLAIMER: PC is providing, by agreement with certain parties, materials stored electronically. The parties recognize that data, plans, specifications, reports, drawings, and other documents are subject to unauthorized alteration, deletion, or destruction. PC does not warrant the accuracy, completeness, or reliability of the information provided. PC shall not be responsible for any loss or damage to any data, plans, specifications, reports, drawings, or other documents stored electronically. PC shall not be responsible for any loss or damage to any data, plans, specifications, reports, drawings, or other documents stored electronically. PC shall not be responsible for any loss or damage to any data, plans, specifications, reports, drawings, or other documents stored electronically.

MEISTER-COX ARCHITECTS

INFO@MEISTER-COX.COM
 PHONE: 610-375-1331 FAX: 610-375-4655
 1522 PENN AVENUE WYOMISSING, PA 19310
 WWW.MEISTER-COX.COM

BUILDING SECTIONS

HOLIDAY INN EXPRESS & SUITES
 INTERSECTION OF HAYNES PLACE & LAMM RD.
 WILSON, NC 27893

STATUS:	BIDDING
PROJ. DATE:	06-07-19
PROJ. NO.:	18-176
PRINTED:	6/22/2019 10:54:48 AM
DRAWN BY:	RFF
CHECKED BY:	TGC
SHEET NO.:	A311
SCALE:	1/8" = 1'-0"

