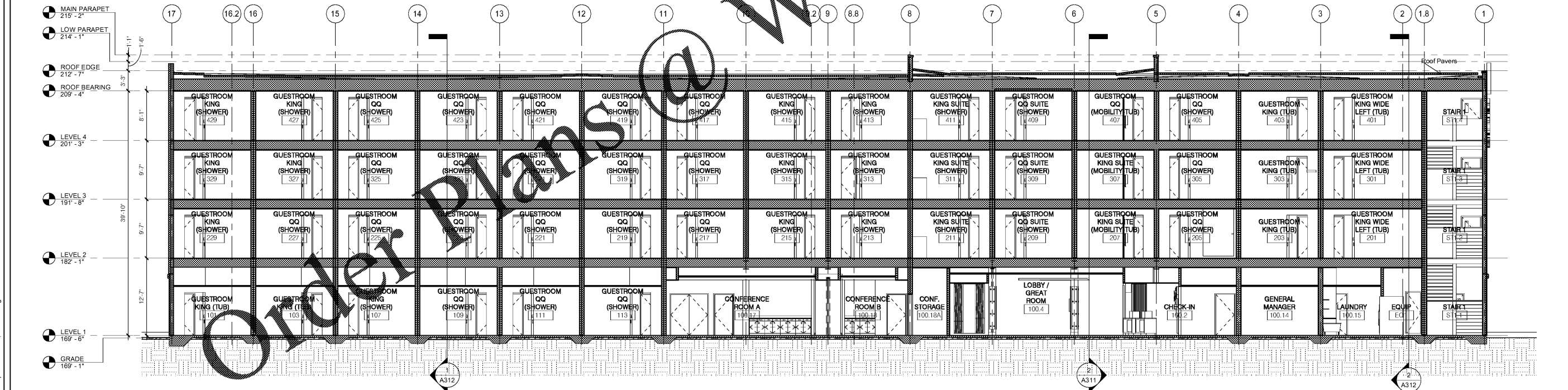


2 BLDG SECTION 2
1/8" = 1'-0"



1 BLDG SECTION 1
1/8" = 1'-0"

DISCLAIMER: PC is providing, by agreement with certain parties, materials stored electronically. The parties recognize that data, plans, specifications, reports, drawings, and other documents are subject to unauthorized alteration, deletion, transmission, conversion, media degradation, software error or human alteration. Accordingly, all such documents are provided as a guide only and are not to be used for any purpose other than as a record product or as a record document. Any reliance thereon is deemed to be the responsibility of the user. The original documents are stored on the server and are the only true documents of record.

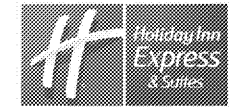
MEISTER-COX ARCHITECTS

INFO@MEISTER-COX.COM
PHONE: 610-375-1331 FAX: 610-375-4665
1522 PENN AVENUE WYOMISSING, PA 19380
WWW.MEISTER-COX.COM

BUILDING SECTIONS

HOLIDAY INN EXPRESS & SUITES
INTERSECTION OF HAYNES PLACE & LAMM RD.
WILSON, NC 27893

STATUS:	BIDDING
PROJ. DATE:	06-07-19
PROJ. NO.:	18-176
PRINTED:	6/22/2019 10:54:45 AM
DRAWN BY:	RFF
CHECKED BY:	TGC
SHEET NO.:	A310
SCALE:	1/8" = 1'-0"



N:\Active Projects\hospitality\018 Holiday Inn Express - Wilson, NC\Drawings CAD-Rev\18-176.rvt