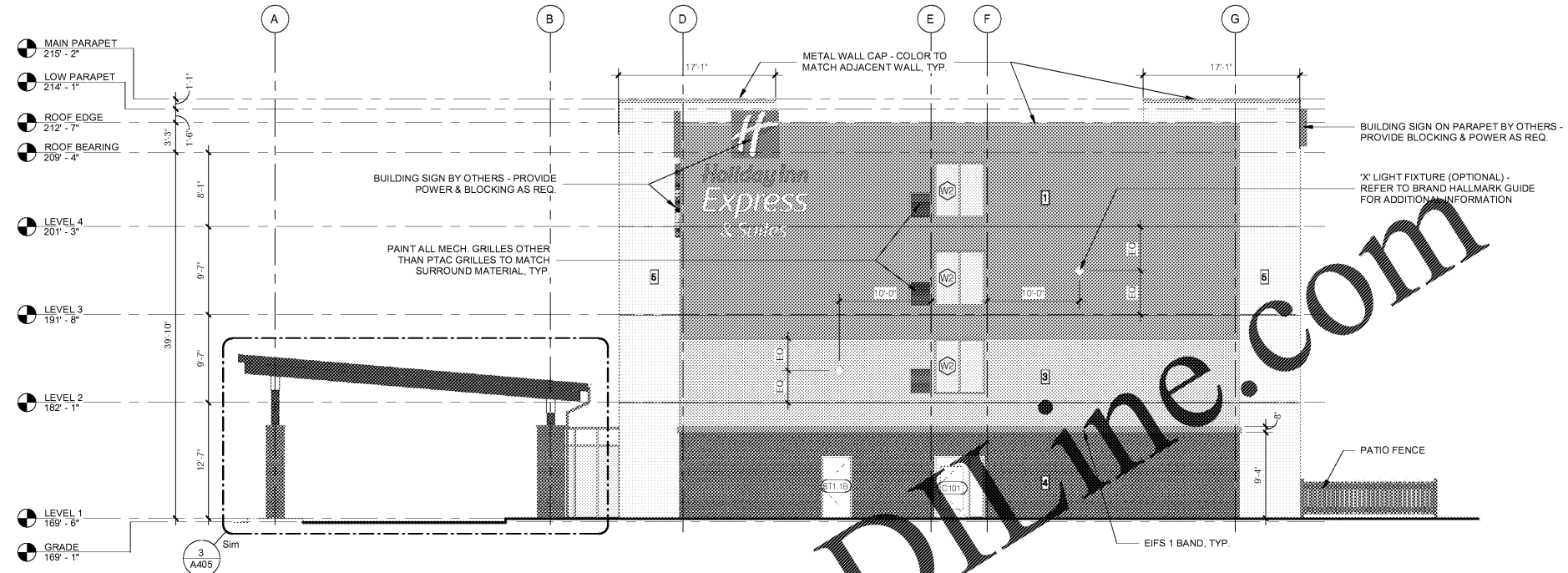
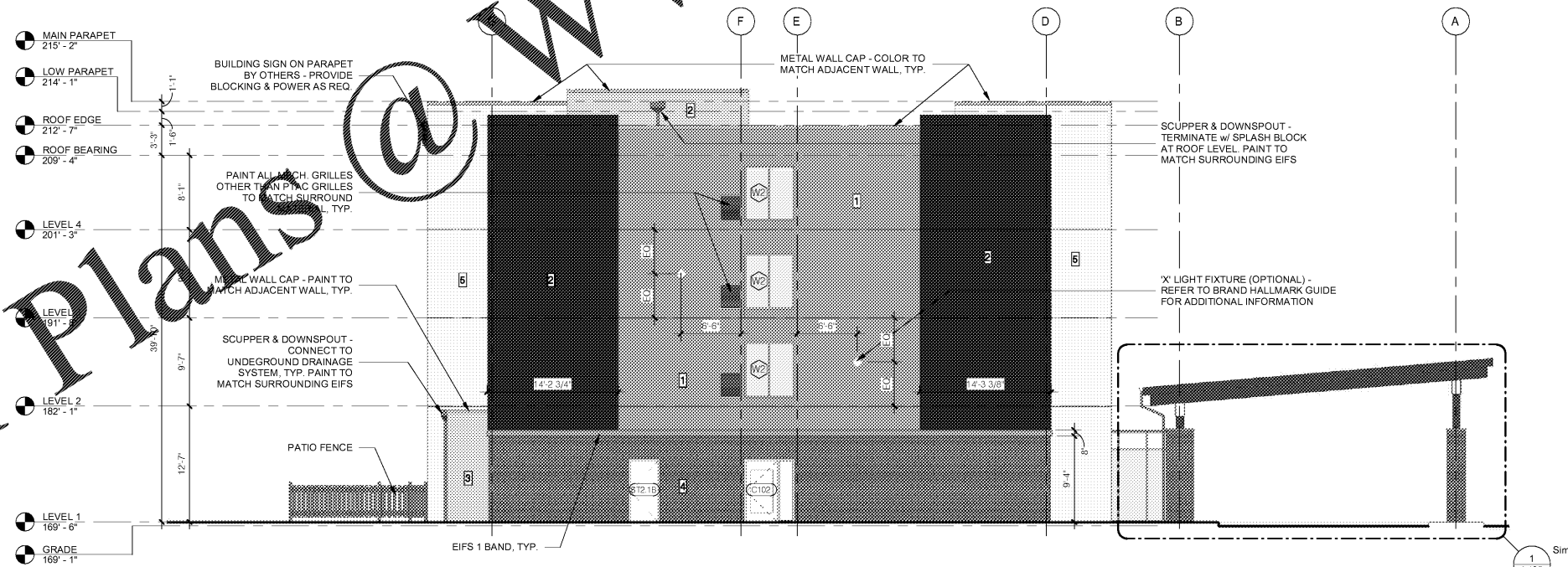


**MATERIAL LEGEND**

- 1 EIFS 1 - PAREX SMOOTH, SAND SMOOTH SURFACE WITH PDR ACRYLIC FINISH. COLOR: PLATEAU 3019L
- 2 EIFS 2 - PAREX SMOOTH, SAND SMOOTH SURFACE WITH PDR ACRYLIC FINISH. COLOR: IVORY 1044L
- 3 EIFS 2 - PAREX SMOOTH, SAND SMOOTH SURFACE WITH PDR ACRYLIC FINISH. COLOR: TUXEDO 3033L
- 4 THIN BRICK VENEER - GLEN GETY THIN TECH ELITE CLADDING SYSTEM w/ DRAINAGE CHAMFER. COLOR: SLATE (W-15-1557) EASTLINE THIN BRICK
- 5 METAL PANEL SYSTEM - LAMINATORS INC. OMEGA LITE PANELS w/ DRY SEAL INSTALLATION METHOD. COLOR: NATURAL SERIES CLEAR MATTE



2 EXTERIOR ELEVATION, WEST  
1/8" = 1'-0"



1 EXTERIOR ELEVATION, EAST  
1/8" = 1'-0"

No.	Description	Date

DISCLAIMER: PC is provided by agreement with certain parties, materials, specifications, reports, and electronic media (including but not necessarily limited to CAD documents) are subject to modification, alteration, correction, transmission, conversion, media degradation, software error or human alteration. Accordingly, all such purposes only and not as an end product or as a record document. Any reliance thereon is deemed to be the user's responsibility. The Architect's instruments of service are the only true documents of record.

**MEISTER-COX ARCHITECTS**

INFO@MEISTER-COX.COM  
 PHONE: 610-375-1331 FAX: 610-375-4665  
 1522 PENN AVENUE WYOMISSING, PA 19610  
 WWW.MEISTER-COX.COM

**EXTERIOR ELEVATIONS**

HOLIDAY INN EXPRESS & SUITES  
 INTERSECTION OF HAYNES PLACE & LAMM RD.  
 WILSON, NC 27893

STATUS:	BIDDING
PROJ. DATE:	06-07-19
PROJ. NO.:	18-176
PRINTED:	6/7/2019 7:10:53 PM
DRAWN BY:	RFF
CHECKED BY:	TGC
SHEET NO.:	A201
SCALE:	As indicated

