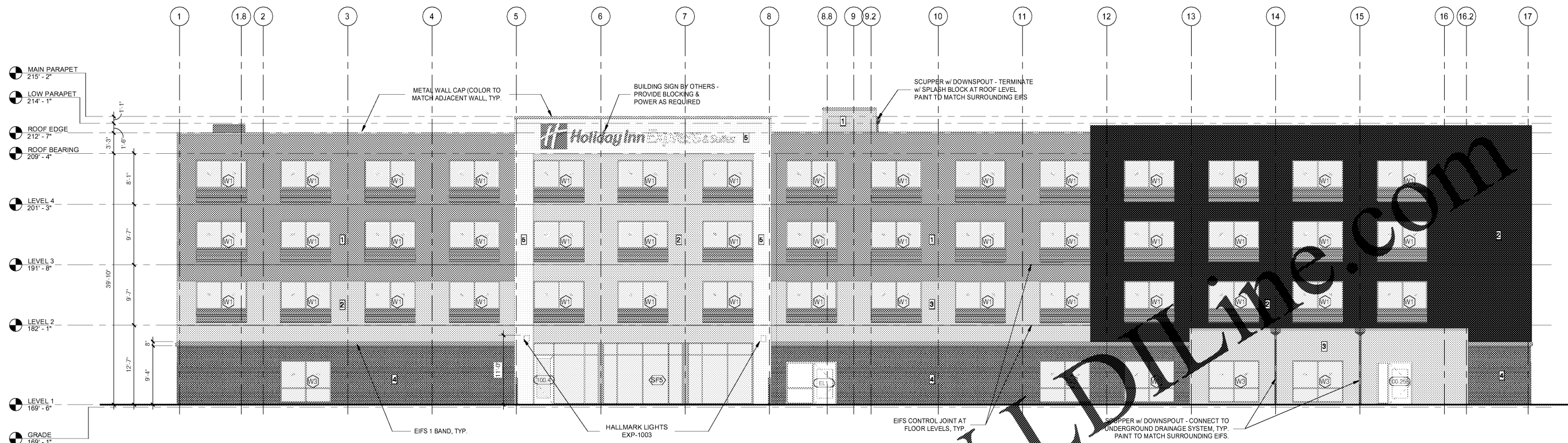


N:\Active Projects\hospitality\018 Holiday Inn Express - Wilson, NC\Drawings CAD-Rev\15-176.rvt



2 EXTERIOR ELEVATION, REAR / WEST
1/8" = 1'-0"

MATERIAL LEGEND

- 1 EIFS 1 - PAREX SMOOTH, SAND SMOOTH SURFACE WITH PDR ACRYLIC FINISH. COLOR: PLATEU 3019L
- 2 EIFS 2 - PAREX SMOOTH, SAND SMOOTH SURFACE WITH PDR ACRYLIC FINISH. COLOR: IVORY 1044L
- 3 EIFS 2 - PAREX SMOOTH, SAND SMOOTH SURFACE WITH PDR ACRYLIC FINISH. COLOR: TUXEDO 3033L
- 4 THIN BRICK VENEER - GLEN GETY THIN TECH ELITE CLADDING SYSTEM w/ DRAINAGE CHAMFER. COLOR: SLATE (W-15-1557) EASTLINE THIN BRICK
- 5 METAL PANEL SYSTEM - LAMINATORS INC. OMEGA LITE PANELS w/ DRY SEAL INSTALLATION METHOD. COLOR: NATURAL SERIES CLEAR MATTE



1 EXTERIOR ELEVATION, FRONT / EAST
1/8" = 1'-0"

No.	Description	Date

DISCLAIMER: This drawing is provided by agreement with certain parties. Materials shown electronically. The parties recognize that data, plans, specifications, reports, drawings, and other documents are subject to modification, deletion, or replacement without notice. The parties agree that the electronic media (including but not limited to) shall be the authoritative source for all information. The parties agree that the electronic media shall be the authoritative source for all information. The parties agree that the electronic media shall be the authoritative source for all information. The parties agree that the electronic media shall be the authoritative source for all information.

MEISTER COX ARCHITECTS

INFO@MEISTER-COX.COM
 PHONE: 610-375-1331 FAX: 610-375-4665
 1622 PENN AVENUE WYOMISSING, PA 19310
 WWW.MEISTER-COX.COM

EXTERIOR ELEVATIONS

HOLIDAY INN EXPRESS & SUITES
 INTERSECTION OF HAYNES PLACE & LAMM RD.
 WILSON, NC 27893

STATUS:	BIDDING
PROJ. DATE:	06-07-19
PROJ. NO.:	18-176
PRINTED:	6/7/2019 7:10:48 PM
DRAWN BY:	RFF
CHECKED BY:	TGC
SHEET NO.:	A200
SCALE:	As indicated

