

**REFLECTED CEILING PLAN LEGEND**

FLUORESCENT LIGHT (2'-0"x4'-0")	EXIT LIGHT	CEILING MTD MICROPHONE	RETURN/EXHAUS T. GRILLE
FLUORESCENT LIGHT (2'-0"x2'-0")	ACCESS PANEL (1'-0"x1'-0" UNO)	SPRINKLER HEADS CONCEALED	LINEAR DIFFUSER
DOWNLIGHT	SMOKE DETECTORS	SPRINKLER HEADS SEMI RECESSED	SUPPLY AIR DIFFUSER
PENDANT LIGHT	SPEAKERS	SPRINKLER HEADS WALL MOUNT	DECORATIVE T'S'S
WALL WASH LIGHT	FIRE ALARM/HORN/STROBE	SPRINKLER HEADS CEILING MOUNT	RECESSED HALOGEN
STRIP LIGHTS	SECURITY CAMERA	WALL MOUNTED EXIT LIGHT (SEE MECHANICAL)	GYP. BOARD CEILING
WALL MOUNT LIGHT	CLOSED CIRCUIT		A.C.T. CEILING TILE
WALL SCONCE			

**REFLECTED CEILING PLAN GENERAL NOTES**

1. SEE M.E.P. DRAWINGS FOR SPECIFICATIONS AND CONFIGURATION OF MECHANICAL, ELECTRICAL & PLUMBING ITEMS.
2. ALL CEILING MATERIAL MUST HAVE CLASS "A" FIRE RATING.
3. SUPPORT WIRES FOR CEILING SUSPENSION SHALL BE ANCHORED TO STRUCTURE ABOVE AND AS REQUIRED. SUPPORT WIRES SHALL NOT BE CONNECTED TO ANY MECHANICAL, ELECTRICAL, PLUMBING OR FIRE PROTECTION PIPING OR EQUIPMENT.
4. SPRINKLER HEADS AT GYPSUM BOARD CEILINGS MUST BE FULLY RECESSED AND COVERED WITH METAL PLATES FINISHED TO MATCH ADJACENT SURFACE.
5. CENTER SPRINKLER HEADS, DIFFUSERS, LIGHT FIXTURES, AND OTHER RECESSED OR SURFACE MOUNTED ITEMS IN CEILING TILES.
6. PAINT OUT ALL DIFFUSERS, SPEAKERS, TRIM RINGS, AND EXPOSED DUCTS TO MATCH CEILING FINISH.
7. ALL GYP. BD. CEILINGS & SOFFITS SHALL HAVE LEVEL 5 FINISH & SHALL BE PAINTED.
8. SEE FINISH PLAN AND SCHEDULE FOR FINISH SPECIFICATIONS.
9. CENTER CEILING GRID IN ROOM UNLESS NOTED OTHERWISE.

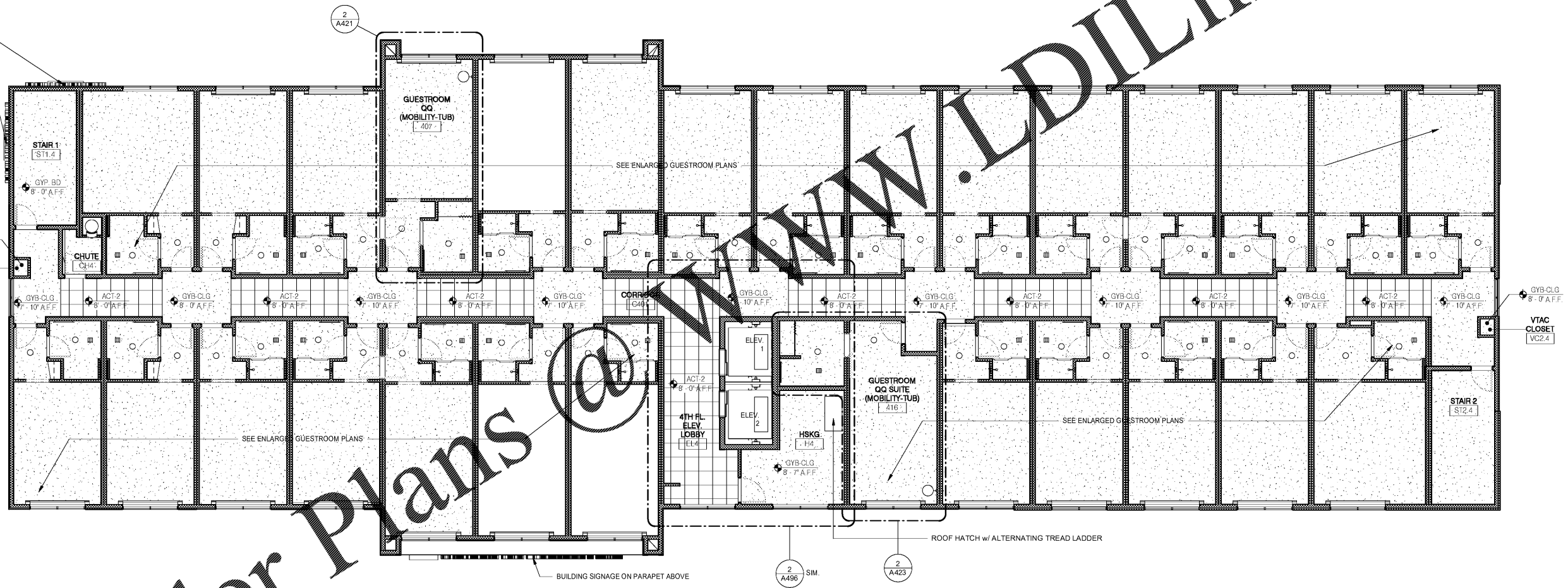
**REFLECTED CEILING PLAN NOTES**

1. LEVEL 1 GYB-RC CEILING AT 11'-0" IS CONTINUOUS, WITH THE EXCEPTION OF ENCLOSING STEEL BEAMS AND LOAD BEARING WALLS, ABOVE ALL ACT AND GYB-CLG CEILINGS.
2. LEVELS 2, 3 AND 4 GYB CLG CEILING AT 8'-0" IS CONTINUOUS ABOVE ACT CEILINGS WITH THE EXCEPTION OF LOAD BEARING WALLS.
3. REFER TO MEP DWGS FOR ADDITIONAL LIGHT, HVAC AND PLUMBING FIXTURE TYPES AND SPECIFICATIONS.
4. SEE ENLARGED GUESTROOM PLANS FOR MORE INFORMATION.
5. RECESSED LIGHT AND OTHER FIXTURES PENETRATING RATED HORIZONTAL FLOOR/CEILING ASSEMBLY REQUIRES GYB HOUSING. SEE A760/10.

ACT 2 2' x 2' GRID  
 ACT 3 2' x 4' GRID  
 ACT 4 2' x 4' GRID (SCRUBBABLE TILE)

SEE BRAND STANDARDS & SPECIFICATIONS FOR ADDITIONAL INFORMATION

BUILDING SIGNAGE - SEE ELEC. DWGS. PROVIDE BLOCKING AS REQ.



Order Plans @ [www.LDILine.com](http://www.LDILine.com)

1 LEVEL 4 - RCP  
 1/8" = 1'-0"

No.	Description	Date

DISCLAIMER: PC is providing, by agreement with certain parties, materials stored electronically. The parties recognize that data, plans, specifications, reports, drawings, and other documents are subject to modification, alteration, deletion, transmission, conversion, media degradation, software error or human alteration. Accordingly, all such documents are provided as a service and not as a record document. Any reliance thereon is deemed to be the responsibility of the user. Stripped hard copies of the Architect's instruments of service are the only true documents of record.

**MEISTER COX ARCHITECTS**  
 INFO@MEISTERCOX.COM  
 PHONE: 610-375-1331 FAX: 610-375-4665  
 1522 PENN AVENUE WYOMISSING, PA 19610  
 WWW.MEISTERCOX.COM

**REFLECTED CEILING PLAN - LEVEL 4**  
 HOLIDAY INN EXPRESS & SUITES  
 INTERSECTION OF HAYNES PLACE & LAMM RD.  
 WILSON, NC 27893

STATUS:	BIDDING
PROJ. DATE:	06-07-19
PROJ. NO.:	18-176
PRINTED:	6/7/2019 7:10:41 PM
DRAWN BY:	RFF
CHECKED BY:	TGC

SHEET NO.  
**A124**  
 SCALE:  
 As indicated

