

REFLECTED CEILING PLAN LEGEND

FLUORESCENT LIGHT (2'-0"x4'-0')	EXIT LIGHT	CEILING MTD MICROPHONE	RETURN/EXHAUS T GRILLE
FLUORESCENT LIGHT (2'-0"x2'-0')	ACCESS PANEL (11'-0"x11'-0" UNO)	SPRINKLER HEADS CONCEALED	LINEAR DIFFUSER
DOWNLIGHT	SMOKE DETECTORS	SPRINKLER HEADS SEMI RECESSED	SUPPLY AIR DIFFUSER
PENDANT LIGHT	SPEAKERS	SPRINKLER HEADS WALL MOUNT	DECORATIVE TS'S
WALL WASH LIGHT	FIRE ALARM/HORN/STROBE	SPRINKLER HEADS CEILING MOUNT	RECESSED HALOGEN
STRIP LIGHTS	SECURITY CAMERA	WALL MOUNTED EXIT LIGHT (SEE MECHANICAL)	GYP. BOARD CEILING
WALL MOUNT LIGHT	CLOSED CIRCUIT		A.C.T. CEILING TILE
WALL SCONCE			

REFLECTED CEILING PLAN GENERAL NOTES

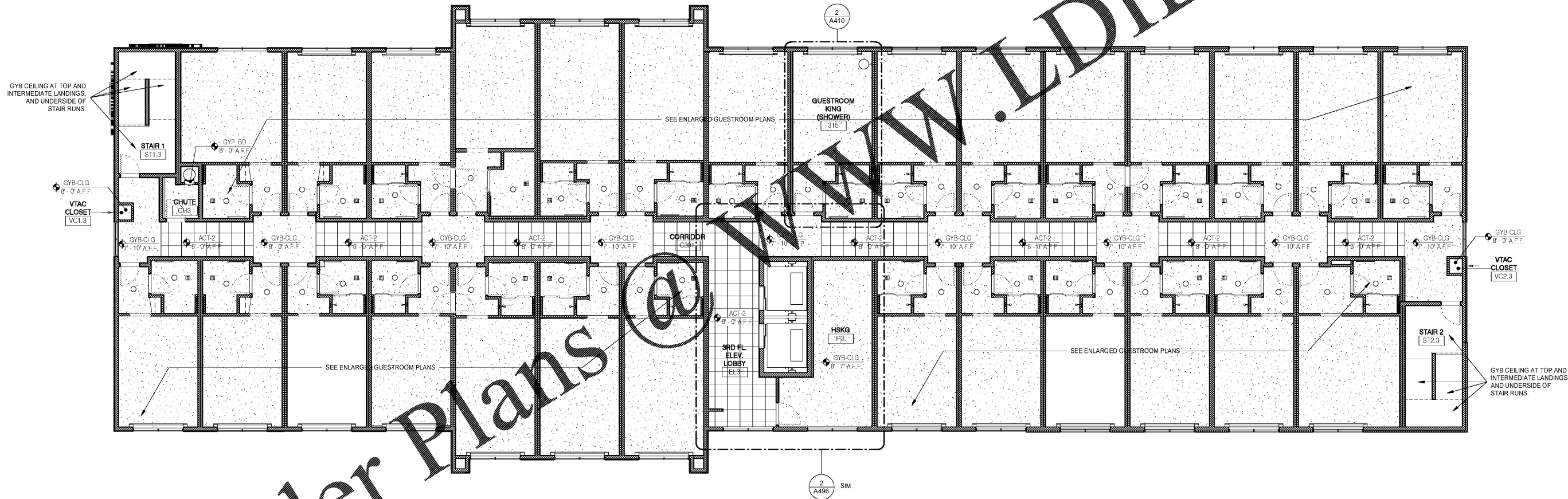
- SEE M.E.P. DRAWINGS FOR SPECIFICATIONS AND CONFIGURATION OF MECHANICAL, ELECTRICAL & PLUMBING ITEMS.
- ALL CEILING MATERIAL MUST HAVE CLASS "A" FIRE RATING.
- SUPPORT WIRES FOR CEILING SUSPENSION SHALL BE ANCHORED TO STRUCTURE ABOVE AND AS REQUIRED. SUPPORT WIRES SHALL NOT BE CONNECTED TO ANY MECHANICAL, ELECTRICAL, PLUMBING OR FIRE PROTECTION PIPING OR EQUIPMENT.
- SPRINKLER HEADS AT GYPSUM BOARD CEILINGS MUST BE FULLY RECESSED AND COVERED WITH METAL PLATES FINISHED TO MATCH ADJACENT SURFACE.
- CENTER SPRINKLER HEADS, DIFFUSERS, LIGHT FIXTURES, AND OTHER RECESSED OR SURFACE MOUNTED ITEMS IN CEILING TILES.
- PAINT OUT ALL DIFFUSERS, SPEAKERS, TRIM RINGS, AND EXPOSED DUCTS TO MATCH CEILING FINISH.
- ALL GYP. BD. CEILINGS & SOFFITS SHALL HAVE LEVEL 5 FINISH & SHALL BE PAINTED.
- SEE FINISH PLAN AND SCHEDULE FOR FINISH SPECIFICATIONS.
- CENTER CEILING GRID IN ROOM UNLESS NOTED OTHERWISE.

REFLECTED CEILING PLAN NOTES

- LEVEL 1 GYB-RC CEILING AT 11'-0" IS CONTINUOUS, WITH THE EXCEPTION OF ENCLOSING STEEL BEAMS AND LOAD BEARING WALLS, ABOVE ALL ACT AND GYB-CLG CEILINGS.
- LEVELS 2, 3 AND 4 GYB CLG CEILING AT 8'-0" IS CONTINUOUS ABOVE ACT CEILINGS WITH THE EXCEPTION OF LOAD BEARING WALLS.
- REFER TO MEP DWGS FOR ADDITIONAL LIGHT, HVAC AND PLUMBING FIXTURE TYPES AND SPECIFICATIONS.
- SEE ENLARGED GUESTROOM PLANS FOR MORE INFORMATION.
- RECESSED LIGHT AND OTHER FIXTURES PENETRATING RATED HORIZONTAL FLOOR/CEILING ASSEMBLY REQUIRES GYB HOUSING. SEE A760/15.

ACT 2 2' x 2' GRID
 ACT 3 2' x 4' GRID
 ACT 4 2' x 4' GRID (SCRUBBABLE TILE)

SEE BRAND STANDARDS & SPECIFICATIONS FOR ADDITIONAL INFORMATION



Order Plans @ www.LDILine.com

1 LEVEL 3 - RCP
 1/8" = 1'-0"

No.	Description	Date

DISCLAIMER: PC is provided by agreement with certain parties, materials stored electronically. The parties recognize that data, plans, specifications, reports, drawings, and other documents are subject to modification, alteration, deletion, or destruction without notice. The parties agree that the electronic documents are not to be used for any purpose other than that intended by the provider. Any reliance on these documents is deemed to be the user's responsibility. The provider is not responsible for any damage or loss of data or information. Services are the only true documents of record.

MEISTER COX ARCHITECTS

INFO@MEISTERCOX.COM
 PHONE: 610-375-1331 FAX: 610-375-4655
 1522 PENN AVENUE WYOMISSING, PA 19310
 WWW.MEISTERCOX.COM

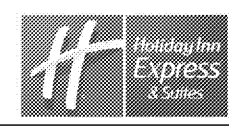
REFLECTED CEILING PLAN - LEVEL 3

HOLIDAY INN EXPRESS & SUITES

INTERSECTION OF HAYNES PLACE & LAMM RD.
 WILSON, NC 27893

STATUS: BIDDING
 PROJ. DATE: 06-07-19
 PROJ. NO: 18-176
 PRINTED: 6/7/2019 7:10:37 PM
 DRAWN BY: RFF
 CHECKED BY: TGC

SHEET NO.
A123
 SCALE: As indicated



N:\Active Projects\hospitality\2018 Holiday Inn Express - Wilson, NC\Drawings CAD-Rev\18-176.rvt