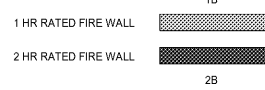


**LIFE SAFETY PLAN NOTES:**

- ROOMS WITH MAXIMUM OCCUPANCY NOTED SHALL BE POSTED AT ENTRY TO THE SPACE.
- THE CARPORT IS NOT OCCUPIED, BUT SHALL BE CONSIDERED A2 OCCUPANCY.
- THE FLOOR/CEILING ASSEMBLY SHALL BE 1 HOUR RATED, EXCEPT WHERE 2 HOURS ARE REQUIRED (AT ELEVATOR EQUIPMENT ROOM AND AT STAIR OFFSETS).
- THE SPRINKLER SYSTEM SHALL MEET NFPA 13 REQUIREMENTS THROUGHOUT THE BUILDING AND CANOPIES.
- FIRE EXTINGUISHERS ARE TO BE SPACED AT 75 FEET MAXIMUM IN CORRIDORS.
- IN ADDITION TO CORRIDOR LOCATIONS, FIRE EXTINGUISHERS ARE REQUIRED AT THE FOLLOWING LOCATIONS:
  - LAUNDRY/BREAK ROOM
  - PANTRY
  - FRONT DESK AREA
  - MECH / ELEC ROOMS
  - POOL EQUIPMENT ROOM
- MANUAL FIRE ALARM PULL STATIONS ARE REQUIRED AT THE FOLLOWING LOCATIONS:
  - ALL EXTERIOR EXIT DOORS AT GRADE
  - ALL UPPER FLOOR STAIR ACCESS POINTS
  - WITHIN 15 FEET OF THE FRONT DESK AREA
- CARBON MONOXIDE DETECTORS ARE REQUIRED AT THE FOLLOWING LOCATIONS:
  - WHERE THERE IS A FUEL BURNING APPLIANCE
  - IN GUESTROOMS ADJACENT TO THE ROOM WHERE THERE IS A FUEL BURNING APPLIANCE
  - IN CORRIDORS OR COMMON AREAS ADJACENT TO THE ROOM WHERE THERE IS A FUEL BURNING APPLIANCE
- CARBON MONOXIDE DETECTORS ARE TO COMMUNICATE WITH REMOTE PANEL AT FRONT DESK OR OTHER CONTINUOUSLY STAFFED LOCATION.
- WHERE WALLS ARE TO BE 1 HOUR RATED FOR BEARING PURPOSES ONLY, DOORS DO NOT REQUIRE ANY RATING. SEE DOOR SCHEDULE FOR DOOR RATING REQUIREMENTS.
- SEE ELECTRICAL DRAWINGS FOR EMERGENCY LIGHT AND EXIT LIGHT LOCATIONS.

**RATED WALL LEGEND**



**TACTILE SIGNAGE LEGEND**

- EXIT
- TOILET
- STAIR
- FLOOR LEVEL INDICATOR (SEE NOTES 1 & 2)
- ELEVATOR EMERGENCY SIGN - DO NOT USE IN CASE OF FIRE
- ROOF ACCESS

**NOTES:**

- AT EACH STAIR TOWER SIGN, PROVIDE VERBIAGE TO INDICATE THAT ROOF ACCESS IS LOCATED IN THE HOUSEKEEPING ROOM BEHIND THE ELEVATOR ON THE FOURTH FLOOR (TYP. 8 LOCATIONS)
- AT ELEVATOR LOCATIONS, PROVIDE FLOOR LEVEL INDICATOR WITH BRAILLE ON EACH ELEVATOR JAMB (TYP. 4 LOCATIONS PER FLOOR). PROVIDE A RAISED STAIR INDICATING THE FIRST FLOOR LEVEL.
- TACTILE SIGNS WITH BRAILLE SHALL BE PROVIDED AT ALL PERMANENT ROOM ENTRANCES. COORDINATE WITH IHG APPROVED SIGN PROVIDER. SUBMIT INTERIOR SIGNAGE PACKAGE FOR ARCHITECT REVIEW.

**AREA SEPARATION NOTES**

- A-2 OCCUPANCY
  - PROVIDE 1 HOUR FLOOR / CEILING ASSEMBLY TO PROVIDE SEPARATION OF A-2 AND R-1 PER SECTION 508.4.3 SEPARATED OCCUPANCIES.
  - GUESTROOMS REQUIRE 1 HOUR WALL AND FLOOR / CEILING ASSEMBLIES.
  - LAUNDRY ROOM WILL REQUIRE ONE HOUR WALL AND FLOOR / CEILING ASSEMBLIES.
  - ELECTRIC ROOM WILL REQUIRE 1 HOUR WALL AND FLOOR / CEILING ASSEMBLIES.
  - STAIRS, ELEVATOR, AND LINEN CHUTE ARE VERTICAL SHAFTS AND WILL REQUIRE 2 HOUR WALL AND FLOOR / CEILING ASSEMBLIES.
- R-1 OCCUPANCY
  - GUESTROOMS REQUIRE ONE HOUR WALL AND FLOOR / CEILING ASSEMBLIES.
  - STAIRS, ELEVATOR, MECHANICAL SHAFTS, AND LINENCHUTE ARE VERTICAL SHAFTS AND WILL REQUIRE 2 HOUR WALL AND FLOOR / CEILING ASSEMBLIES.

**FLOOR / CEILING PENETRATION NOTES**

- DUCT PENETRATIONS THROUGH FLOOR / CEILING OR ROOF / CEILING ASSEMBLIES WITHIN 100 SQUARE FOOT AREA ARE LIMITED TO 100 SQUARE INCHES.
- HOLES FOR PENETRATIONS TO BE NO LARGER THAN 1/4" OF ANNUAL SPACE AROUND PENETRANT.
- SPACE AROUND PENETRANT TO BE FIRE CAULKED OR FIRE COLLARED DEPENDING ON PENETRANT SIZE AND LOCATION.
- ANY RECONFIGURATION OF PENETRATIONS SHALL BE SUBMITTED TO ARCHITECT FOR PRE-APPROVAL.

**EXIT WIDTH NOTES**

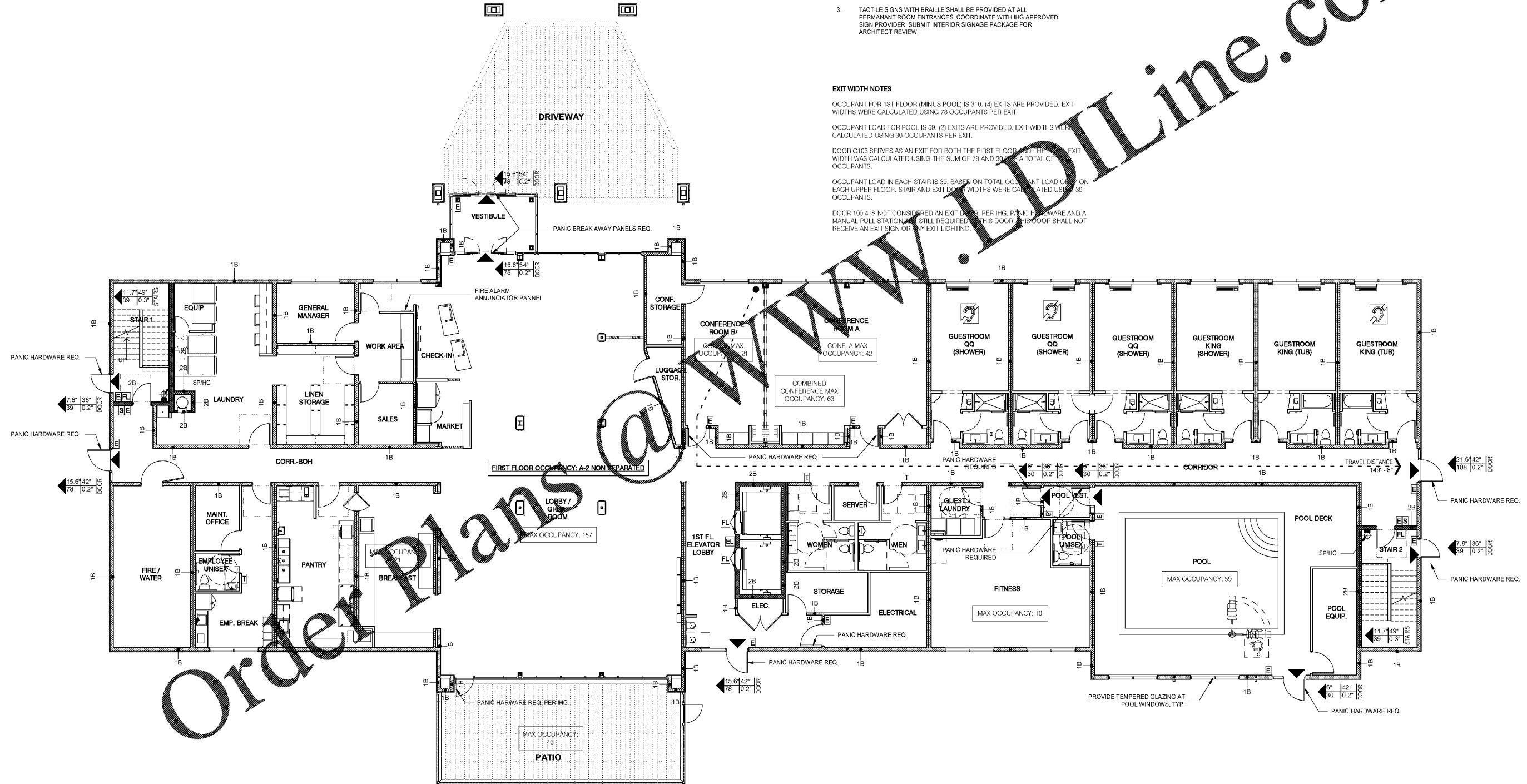
OCCUPANT FOR 1ST FLOOR (MINUS POOL) IS 310. (4) EXITS ARE PROVIDED. EXIT WIDTHS WERE CALCULATED USING 78 OCCUPANTS PER EXIT.

OCCUPANT LOAD FOR POOL IS 59. (2) EXITS ARE PROVIDED. EXIT WIDTHS WERE CALCULATED USING 30 OCCUPANTS PER EXIT.

DOOR C103 SERVES AS AN EXIT FOR BOTH THE FIRST FLOOR AND THE POOL. EXIT WIDTH WAS CALCULATED USING THE SUM OF 78 AND 30 OCCUPANTS (A TOTAL OF 108 OCCUPANTS).

OCCUPANT LOAD IN EACH STAIR IS 39, BASED ON TOTAL OCCUPANT LOAD OF 78 ON EACH UPPER FLOOR. STAIR AND EXIT DOOR WIDTHS WERE CALCULATED USING 39 OCCUPANTS.

DOOR 100.4 IS NOT CONSIDERED AN EXIT UNDER PER IHG, PANIC HARDWARE AND A MANUAL PULL STATION IS STILL REQUIRED FOR THIS DOOR. THIS DOOR SHALL NOT RECEIVE AN EXIT SIGN OR ANY EXIT LIGHTING.



Order Plans @ www.IDIline.com

No.	Description	Date

DISCLAIMER: PC is providing, by agreement with certain parties, materials stored electronically. The parties recognize that data, plans, specifications, reports, drawings, and other documents are subject to unauthorized alteration, copying, transmission, conversion, media degradation, software error or human alteration. Accordingly, all such documents are provided as a service and not as a record. Any reliance thereon is deemed to be solely the responsibility of the user. The user shall retain a hard copy of the original documents of record. Service are the only true documents of record.

**MEISTER COX ARCHITECTS**

INFO@MEISTERCOX.COM  
 PHONE: 610-375-1331 FAX: 610-375-4655  
 1522 PENN AVENUE WYOMISSING, PA 19380  
 WWW.MEISTERCOX.COM

**LIFE SAFETY PLAN - LEVEL 1**

**HOLIDAY INN EXPRESS & SUITES**

INTERSECTION OF HAYNES PLACE & LAMM RD.  
 WILSON, NC 27893

STATUS:	BIDDING
PROJ. DATE:	06-07-19
PROJ. NO.:	18-176
PRINTED:	6/7/2019 7:10:00 PM
DRAWN BY:	RFF
CHECKED BY:	TGC
SHEET NO.:	A031
SCALE:	As indicated

