

BUILDING SIGN SCHEDULE

FRONT EXTERIOR ELEVATION:
 TYPE: OR 49' / 24' AP LINEAR
 DETAIL: REFER TO 5/SG2.1

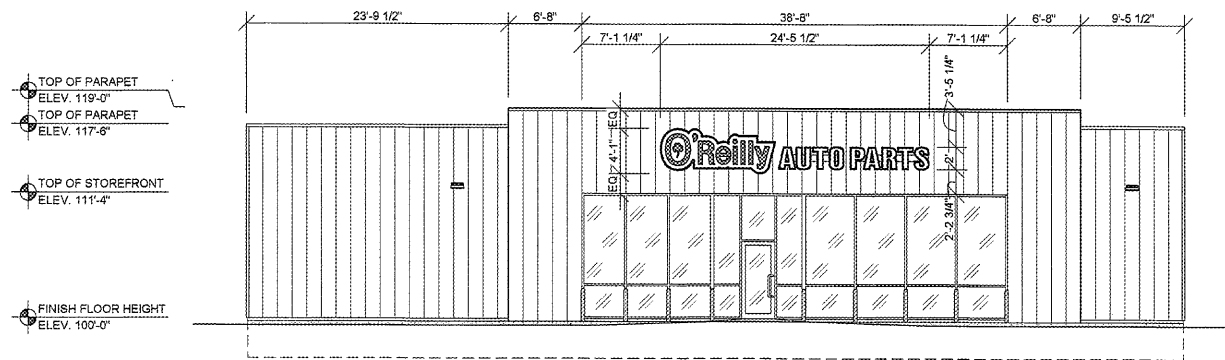
RIGHT EXTERIOR ELEVATION:
 TYPE: NO SIGN
 DETAIL:

REAR EXTERIOR ELEVATION:
 TYPE: NO SIGN
 DETAIL:

LEFT EXTERIOR ELEVATION:
 TYPE: NO SIGN
 DETAIL:

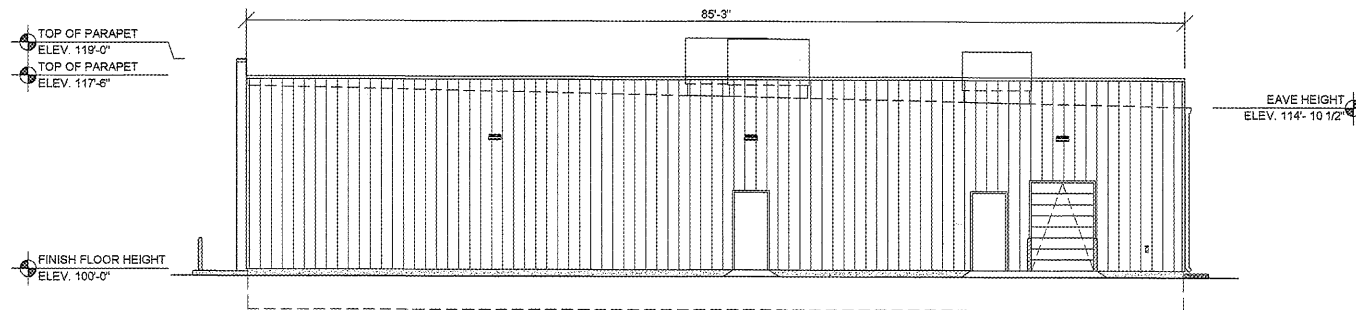
GENERAL NOTES

- (A) CONTACT OWNER'S OR TENANT'S DESIGNATED PROJECT ADMINISTRATOR FOR QUESTIONS OR CLARIFICATIONS.
- (B) BUILDING PERMANENT SIGNAGE OWNER FURNISHED AND INSTALLED. (REFER TO SCOPE OF WORK SCHEDULE). SIGNAGE GRAPHICS PROVIDED FOR REFERENCE ONLY (N.I.C.) AND CONTRACTOR'S COORDINATION WITH SPECIFIC PROJECT CONSTRUCTION CONDITIONS. CONTRACTOR TO PROVIDE BACKING AND ROUGH-IN ELECTRICAL AS REQUIRED FOR INSTALLATION. REFER TO A2.1 FOR EXTERIOR BUILDING FINISH.
- (C) REQUIRED GOVERNMENTAL PERMITS FOR PERMANENT TYPE SIGNAGE TO BE PROVIDED BY OWNER OR OTHERS (N.I.C.).



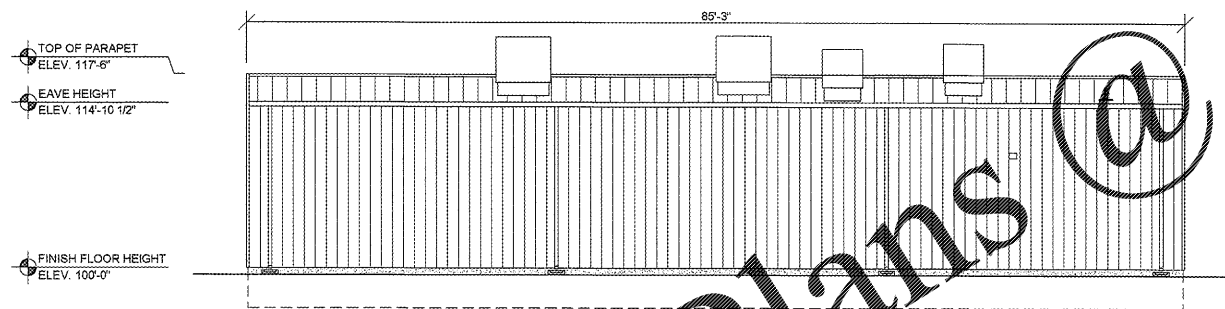
1 FRONT EXTERIOR ELEVATION

SG2.1 SCALE: 1/8" = 1'-0"



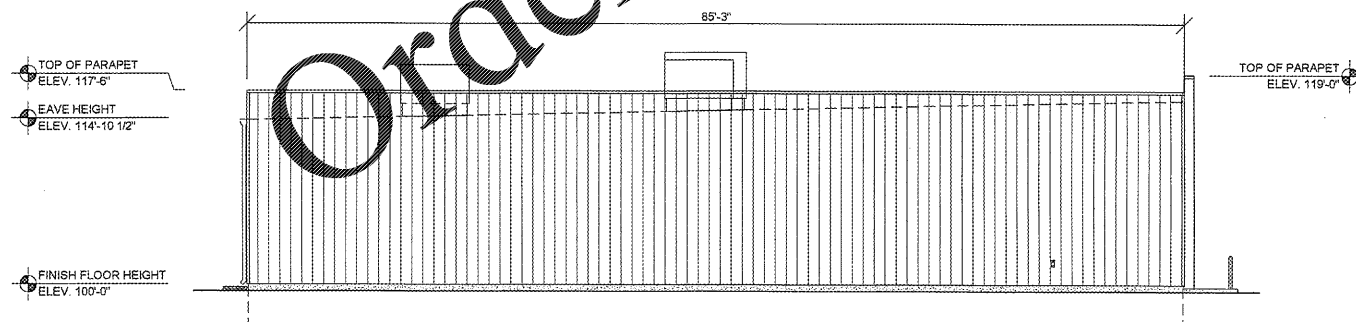
2 RIGHT EXTERIOR ELEVATION

SG2.1 SCALE: 1/8" = 1'-0"



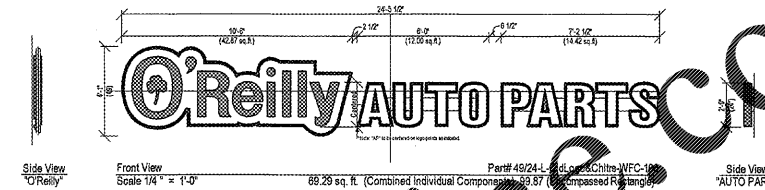
3 REAR EXTERIOR ELEVATION

SG2.1 SCALE: 1/8" = 1'-0"



4 LEFT EXTERIOR ELEVATION

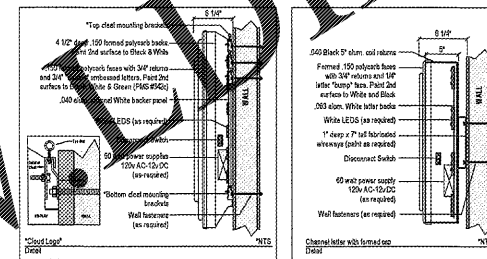
SG2.1 SCALE: 1/8" = 1'-0"



Side View
 "O'Reilly"
 Front View
 Scale 1/4" = 1'-0"
 Part# 49/24-L-CldLogo&Chlrs-WFC-100
 69.29 sq. ft. (Combined Individual Components: 69.87' (Compressed Rectangle)
 Side View
 "AUTO PARTS"

"O'Reilly" Cloud Logo with "AP" channel letters on 7" (h) x 1" (d) wireways. Wireway paint to: T5.
 "O'Reilly" Cloud Logo is formed polycarb with double embossment with 2nd surface painted graphic. Color match to: Green (PMS# 342c), Black and White.
 "AP" to have formed polycarb caps with 1/4" "feet" "ramps". Black 5" aluminum coil returns. 2nd surface Black and White paint. WHITE LED illumination.

NOTE: This is the 49/24-L-CldLogo&Chlrs-WFC-100 with modified reduced spacing (100 sq. ft.) layout.



5 FRONT WALL SIGN DETAILS

SG1.1 SCALE: 1/4" = 1'-0"

Formed Cloud Logo with "AP" Formed Caps & Channel Returns
 Part# 49/24-L-CldLogo&Chlrs-WFC-100

Order Plans @ WWW.DIPLINE.COM

DESIGN BY OTHERS FOR REFERENCE ONLY

CRAIG A. SCHNEIDER, AIA
 ARCHITECT
 1736 East Sunshine, Suite 417
 Springfield, Missouri 65804
 417.862.0558
 Fax: 417.862.3265
 e-mail: architect@estheticschneider.com

PROJECT:
 NEW O'REILLY AUTO PARTS STORE
 US HWY 43
 WINFIELD, AL
 BUILDING EXTERIOR SIGNAGE

O'Reilly AUTO PARTS
 CORPORATE OFFICES
 233 SOUTH PATTERSON
 SPRINGFIELD, MISSOURI 65802
 (417) 862-2674 TELEPHONE

COMM # 4308
 DATE: 5-3-19
 REVISION
 DATE:

SG2.1