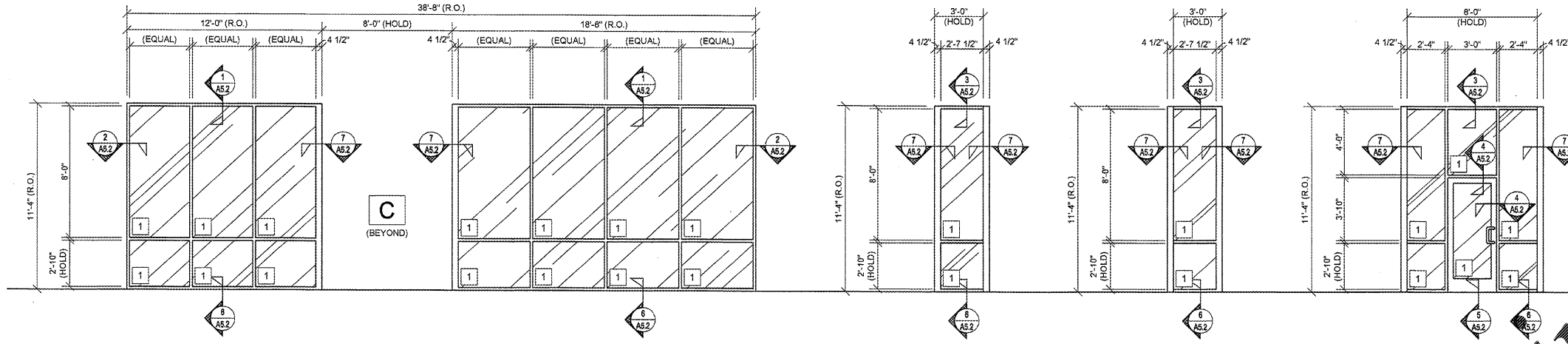


# WINDOW TYPES



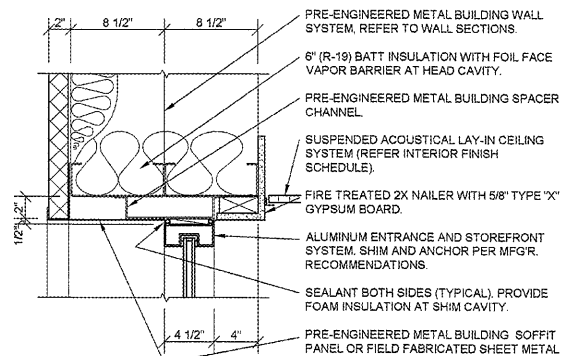
**A** ALUMINUM STOREFRONT FRAMING (2' X 4 1/2") SYSTEM, THERMALLY BROKEN, FIXED UNIT.

**B1** ALUMINUM STOREFRONT FRAMING (2' X 4 1/2") SYSTEM, THERMALLY BROKEN, FIXED UNIT.

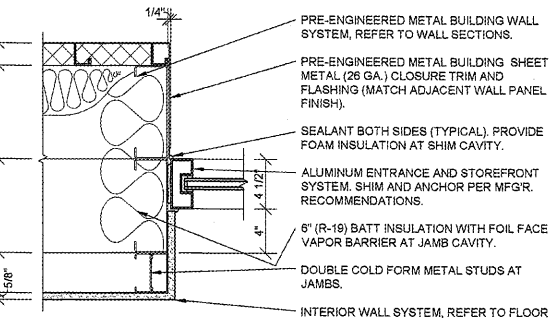
**B2** ALUMINUM STOREFRONT FRAMING (2' X 4 1/2") SYSTEM, THERMALLY BROKEN, FIXED UNIT.

**C** ALUMINUM STOREFRONT FRAMING (2' X 4 1/2") SYSTEM, THERMALLY BROKEN, FIXED UNIT.

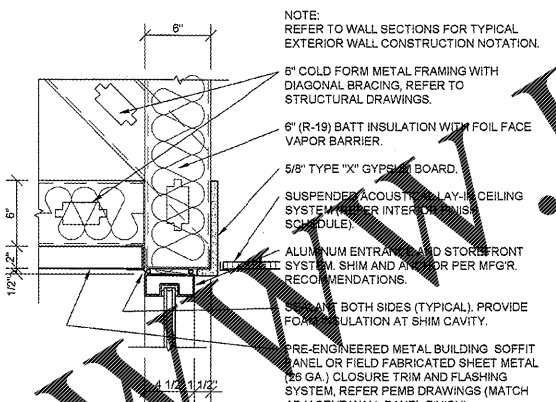
NOTE: REFER TO WALL SECTIONS FOR TYPICAL EXTERIOR WALL CONSTRUCTION NOTATION.



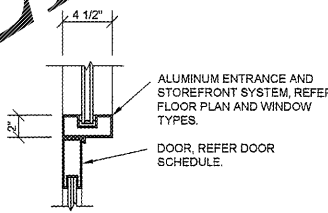
**1 HEAD DETAIL**  
A5.2 SCALE: 1 1/2" = 1'-0"



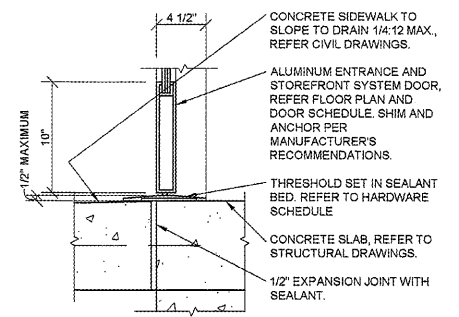
**2 JAMB DETAIL**  
A5.2 SCALE: 1 1/2" = 1'-0"



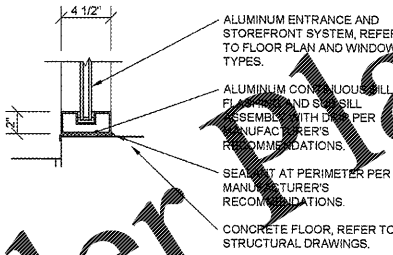
**3 HEAD DETAIL**  
A5.2 SCALE: 1 1/2" = 1'-0"



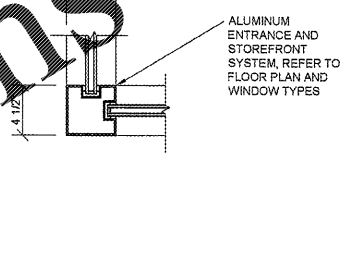
**4 HEAD / JAMB DETAIL**  
A5.2 SCALE: 1 1/2" = 1'-0"



**5 SILL DETAIL**  
A5.2 SCALE: 1 1/2" = 1'-0"



**6 SILL DETAIL**  
A5.2 SCALE: 1 1/2" = 1'-0"



**7 JAMB DETAIL**  
A5.2 SCALE: 1 1/2" = 1'-0"

## GENERAL NOTES

- A REFER TO PROJECT MANUAL FOR ADDITIONAL REQUIREMENTS.
- B REFER TO BUILDING CODE SUMMARY FOR PROJECT STRUCTURAL DESIGN CRITERIA. WINDOW FRAMING AND ANCHORING SYSTEMS SHALL BE DESIGNED BY MANUFACTURER TO CONFORM TO PERFORMANCE AND TESTING REQUIREMENTS SPECIFIED.
- C REFER TO FLOOR PLAN, ELEVATIONS, AND SECTIONS FOR ADDITIONAL REQUIREMENTS.
- D WINDOW TYPE ELEVATIONS SHOWN VIEWED FROM EXTERIOR SIDE.
- E REFER TO EXTERIOR FINISH SCHEDULES FOR ALUMINUM WINDOW FRAMING COLORS. PERIMETER FINISH COLOR TO MATCH WINDOW FRAMING COLOR UNLESS OTHERWISE INDICATED.
- F ALL DIMENSIONS TO FACE UNLESS OTHERWISE INDICATED. FIELD VERIFY FOR ROUGH OPENINGS PRIOR TO FABRICATION.
- G REFER TO DOOR AND HARDWARE SCHEDULES FOR ADDITIONAL REQUIREMENTS.
- H SECURITY GLAZING MAY BE REQUIRED. CONTACT PROJECT ADMINISTRATOR FOR VERIFICATION (REFER TO SCOPE OF WORK SCHEDULE). PROVIDE ADDITIONAL SUPPORT FRAMING SYSTEM AS REQUIRED.
- I WHEN WIND SPEED IS EQUAL TO OR GREATER THAN 120 MPH, A STORM PANEL SYSTEM SHALL BE OWNER FURNISHED AND INSTALLED. CONTACT PROJECT ADMINISTRATOR TO VERIFY AND COORDINATE WITH SYSTEM PROVIDED BY OTHERS. (REFER TO SCOPE OF WORK SCHEDULE). PROVIDE ADDITIONAL SUPPORT FRAMING SYSTEM AS REQUIRED.
- J CONTRACTOR'S OPTION TO DIRECT ORDER AND PURCHASE WINDOW FRAMING SYSTEM AND GLAZING FROM THE FOLLOWING SUPPLIER (REFER TO SCOPE OF WORK SCHEDULE):

**COULTER & COMPANY**  
13711 E. 68TH ST. N.  
OWASSO, OK 74055  
PHONE: (918) 272-4494  
FAX: (918) 272-7908  
EMAIL: carl@coulterglass.com  
CONTACT: Carl Yorman

## GLAZING SCHEDULE

- 1 1" INSULATED SAFETY GLAZING (1/4" CLEAR EXTERIOR PANE / 1/4" CLEAR INTERIOR PANE) SHADING COEFFICIENT 0.81

Order Plans @ WWW.LDILINE.COM



**CRAIG A. SCHNEIDER, AIA**  
ARCHITECT  
1736 East Sunshine, Suite 417  
Springfield, Missouri 65804  
417.862.0558  
417.862.3265  
architect@estrettschneider.com

PROJECT:  
**NEW O'REILLY AUTO PARTS STORE**  
US HWY 43  
WINFIELD, AL  
**WINDOW SCHEDULE**

**O'Reilly AUTO PARTS**  
CORPORATE OFFICES  
233 SOUTH PATTERSON  
SPRINGFIELD, MISSOURI 65802  
(417) 862-2674 TELEPHONE

COMM #	4308
DATE:	5-3-19
REVISION	
DATE:	