

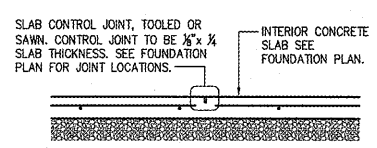
KEYNOTES

- 1 SLAB HARPIN. SEE DETAIL 9/S3.1
- 2 PROVIDE #4x4'-0" DOWEL TURN 45 DEGREES AT SLAB INSIDE CORNERS
- 3 CONTROL OR CONSTRUCTION JOINT SEE DETAILS 1 & 2/S2
- 4 SIDEWALK: PROVIDE 4" THICK CONCRETE REINFORCED W/ #3'S @ 18" O.C. EACH WAY (PLACED AT MID-HEIGHT OF SLAB) OVER COMPACTED SUB-BASE MATERIAL (AS DIRECTED BY THE GEOTECHNICAL REPORT OR ONSITE GEOTECHNICAL ENGINEER) PROPERLY PREPARED SUBGRADE. SEE CIVIL DRAWINGS FOR JOINT REQUIREMENTS, EXTENTS OF FLATWORK, AND TOP OF CONCRETE SPOT ELEVATIONS.
- 5 STEEL BOLLARD: SEE SITE DEVELOPMENT PLANS AND DETAILS. (WHERE APPLICABLE, ALIGN WITH CENTERLINE OF STOREFRONT MULLIONS AND JAMBS OF OVERHEAD DOOR.)
- 6 4"x4" (MIN.) DOORPAD: PROVIDE 4" THICK CONCRETE REINFORCED W/ #3'S @ 18" O.C. EACH WAY (PLACED AT MID-HEIGHT OF SLAB) OVER COMPACTED SUB-BASE MATERIAL (AS DIRECTED BY THE GEOTECHNICAL REPORT OR ONSITE GEOTECHNICAL ENGINEER) ON PROPERLY PREPARED SUBGRADE. CENTER PAD ON DOOR. SEE CIVIL DRAWINGS FOR TOP OF CONCRETE SPOT ELEVATIONS.
- 7 6" WIDE DOORPAD: PROVIDE 4" THICK CONCRETE REINFORCED W/ #3'S @ 18" O.C. EACH WAY (PLACED AT MID-HEIGHT OF SLAB) OVER COMPACTED SUB-BASE MATERIAL (AS DIRECTED BY THE GEOTECHNICAL REPORT OR ONSITE GEOTECHNICAL ENGINEER) ON PROPERLY PREPARED SUBGRADE. EXTEND CONCRETE 1'-6" PAST DOOR JAMB. SEE CIVIL DRAWINGS FOR TOP OF CONCRETE SPOT ELEVATIONS.
- 8 ISOLATION JOINT. SEE DETAIL 3/S2 (SPACING NOT TO EXCEED 30'-0" O.C.)
- 9 DETECTABLE WARNING SURFACE (IF REQUIRED), REFER TO CIVIL DRAWINGS FOR ADDITIONAL INFORMATION.

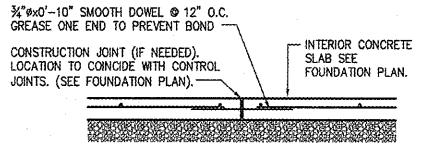
FOUNDATION SCHEDULE

MARK	FOOTING SIZE (W x L x H)	FOOTING REINFORCEMENT		BOTTOM OF FOOTING ELEVATION	PILASTER SIZE	PILASTER REINFORCEMENT		TOP OF PILASTER ELEVATION	MARK
		LONG.	TRANS.			VERT.	TIES		
F1	3'-0"x3'-0"x1'-6"	(4) #5's	(4) #5's	97'-6"					F1
F2	3'-6"x3'-6"x1'-6"	(5) #5's	(5) #5's	97'-6"					F2
F3	5'-6"x5'-6"x1'-6"	(6) #4 EACH WAY TOP & BOT.		96'-0"	SEE 7/S3.2	(12) #6	SEE 8/S3.2	99'-4"	F3
F4	3'-0"x3'-0"x1'-6"	(4) #5's	(4) #5's	97'-6"					F4
F5	3'-0"x3'-0"x1'-6"	(4) #5's	(4) #5's	97'-6"					F5
F6	3'-6"x3'-6"x1'-6"	(5) #5's	(5) #5's	97'-6"					F6

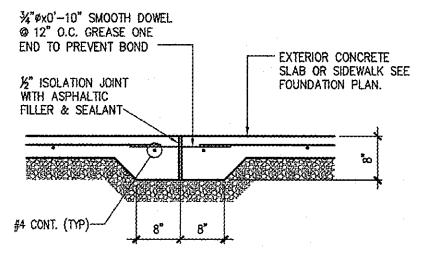
- NOTES:
1. ALL ANCHOR BOLTS SHALL BE SIZE, QUANTITY AND SPACING AS SPECIFIED BY THE PRE-ENGINEERED METAL BUILDING MANUFACTURER. MAINTAIN 3" MINIMUM CONCRETE COVER AROUND BOLTS. TIES SHALL WRAP AROUND ANCHOR BOLTS.
 2. COLUMN BASE PLATES ARE TO REST ON TOP OF SLAB. PROVIDE LEVEL BEARING SURFACE FOR EVEN CONTACT.
 3. COLUMN FOOTING REINFORCEMENT TO BE INTEGRAL WITH CONTINUOUS FOUNDATION REINFORCEMENT (WHERE APPLICABLE).
 4. ALL SPREAD FOOTINGS ARE TO BE CENTERED BENEATH COLUMNS UNLESS NOTED OTHERWISE.
 5. PROVIDE ANCHOR BOLT TEMPLATES AT COLUMN.



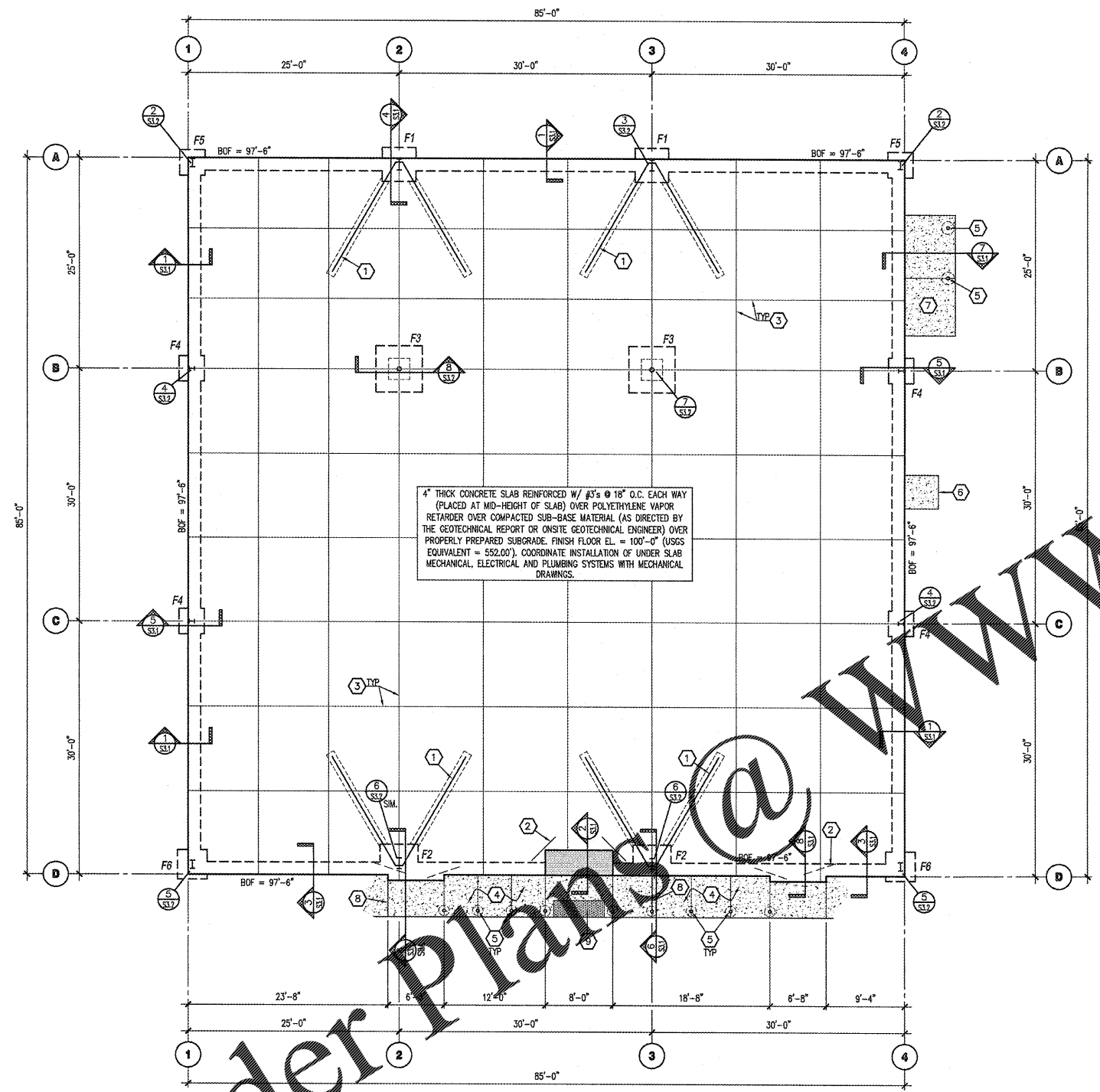
1 TYP. CONTROL JOINT DETAIL
SCALE: 3/4" = 1'-0"



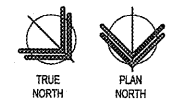
2 TYP. CONSTR. JOINT DETAIL
SCALE: 3/4" = 1'-0"



3 SIDEWALK ISOLATION JOINT
SCALE: 3/4" = 1'-0"



FOUNDATION PLAN
SCALE: 1/8" = 1'-0"



PRE-ENGINEERED METAL BUILDING JAMB POSTS AND SECONDARY POSTS NOT SHOWN. SEE PRE-ENGINEERED METAL BUILDING DRAWINGS FOR ADDITIONAL POST LOCATIONS. REFER TO DETAIL 1/S3.2 (SIM) FOR ANCHORAGE.

Order plans @ WWW.IDOnline.com