

CRAIG A. SCHNIDER, AIA
ARCHITECT
 1736 East Sunshine, Suite 417
 Springfield, Missouri 65904
 417.862.8558
 417.862.3265
 e-mail: architect@estheticschneider.com

PROJECT:
NEW O'REILLY AUTO PARTS STORE
US HWY 43
WINFIELD, AL
LANDSCAPE PLAN

O'Reilly AUTO PARTS
 CORPORATE OFFICES
 233 SOUTH PATTERSON
 SPRINGFIELD, MISSOURI 65902
 (417) 862-2674 TELEPHONE

COMM # 4308
 DATE: 5-3-19
 REVISION
 DATE:

L1.1

GENERAL NOTES

- A REFER TO PROJECT MANUAL FOR ADDITIONAL REQUIREMENTS.
- B SITE CONDITIONS BASED UPON SURVEY PROVIDED BY OWNER. CONTRACTOR TO FIELD VERIFY EXISTING CONDITIONS BY DETAILED INSPECTION PRIOR TO SUBMITTING BID AND BEGINNING CONSTRUCTION. NOTIFY ARCHITECT IF EXISTING CONDITIONS DEVIATE SUBSTANTIALLY FROM THOSE INDICATED HEREIN.
- C REFER TO CIVIL DRAWINGS FOR ADDITIONAL REQUIREMENTS. COORDINATE WORK WITH OTHER SITE RELATED DEVELOPMENT DRAWINGS.
- D ALL PLANTING TYPES SHALL COMPLY WITH LOCAL GOVERNING CODES AND REGULATIONS. CONFORM TO REQUIREMENTS OF PLANT LIST AND TO THE AMERICAN ASSOCIATION OF NURSEYMEN "AMERICAN STANDARD NURSER STOCK" AND "HORTICULTURAL STANDARDS" AS TO SPECIES, AGE, SIZE AND PLANTING RECOMMENDATIONS.
- E NO MATERIAL SUBSTITUTIONS SHALL BE MADE WITHOUT THE ARCHITECT'S PRIOR WRITTEN APPROVAL. ALTERNATE MATERIALS OF SIMILAR SIZE AND CHARACTER MAY BE CONSIDERED IF SPECIFIED PLANT MATERIALS CANNOT BE OBTAINED.
- F PLANT LOCATIONS ARE APPROXIMATE. ADJUST AS NECESSARY TO AVOID CONFLICTS.
- G PROVIDE 4" TOPSOIL AT ALL SOD, SEED AND PLANTING AREAS. GRADE SHALL BE ADJUSTED FOR SOD THICKNESS. REFER TO CIVIL SITE GRADING PLAN FOR SLOPE REQUIREMENTS.
- H WHEN CLAY SOIL IS ENCOUNTERED IN THE ESTABLISHED AREA OF THE LAWN OR THE INSTALLATION OF PLANT MATERIAL IT SHALL BE IMPROVED IN ACCORDANCE WITH STANDARD TRADE PRACTICE.
- I RE-ESTABLISH TURF IN AREAS DISTURBED BY GRADING OR UTILITY TRENCHING IN THE RIGHT-OF-WAY.
- J UPON INSTALLATION, GENERAL CONTRACTOR TO CONFIRM THAT LIGHT POLES, LANDSCAPING AND UTILITIES DO NOT CONFLICT WITH SIGN LOCATION SHOWN. IF ANY POTENTIAL CONFLICT IS DISCOVERED, GENERAL CONTRACTOR IS TO CONTACT OWNER'S REPRESENTATIVE BEFORE PROCEEDING WITH THE WORK.

KEY NOTES

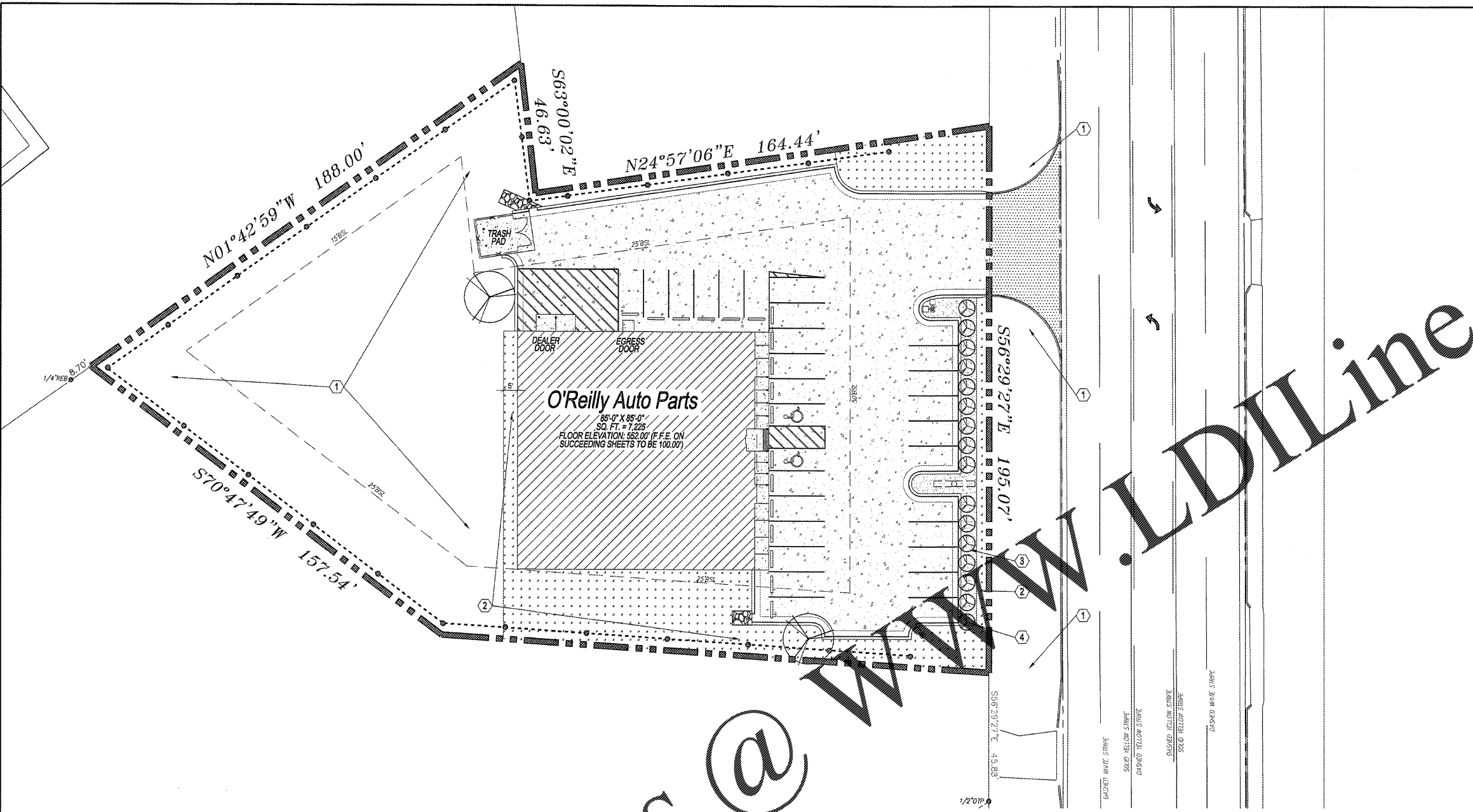
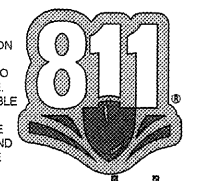
- 1 AREA OF HYDRO MULCH OR SEED AND STRAW. UNLESS NOTED OTHERWISE, ALL AREAS DISTURBED BY CONSTRUCTION ARE FIRST TO BE FINE GRADED AND THEN FOLLOWED BY HYDRO MULCH OR SEED AND STRAW OVER MIN. 4" TOPSOIL STOCKPILED FROM SITE OR HAULED IN AS REQUIRED.
- 2 AREA OF SOD, REFER TO DETAIL 1L1.2.
- 3 CREEK GRAVEL, REFER TO DETAIL 2L1.2.
- 4 LANDSCAPE EDGING, REFER TO DETAIL 2L1.2. PROVIDE AT ALL GROUND COVER TYPE TRANSITIONS.

SYMBOLS LEGEND

NOTE: REFER TO SURVEY SHEET FOR SYMBOLS LEGEND OF EXISTING CONDITIONS.

- NEW AREA OF LANDSCAPE GRAVEL
- NEW AREA OF SOD
- NEW SHRUB PLANTING
- NEW TREE PLANTING

CAUTION:
 INFORMATION ON THIS DRAWING CONCERNING TYPE AND LOCATION OF UNDERGROUND AND OTHER UTILITIES IS NOT GUARANTEED TO BE ACCURATE OR ALL INCLUSIVE. THE CONTRACTOR IS RESPONSIBLE FOR MAKING HIS OWN DETERMINATION AS TO THE TYPE AND LOCATION OF UNDERGROUND AND OTHER UTILITIES AS MAY BE NECESSARY TO AVOID DAMAGE THERETO.



1 LANDSCAPE PLAN
 L1.1 SCALE: 1" = 20'-0"



PLANTING SCHEDULE

REFER TO PROJECT MANUAL FOR ADDITIONAL REQUIREMENTS
 ALL PLANTINGS MAY BE SUBSTITUTED DUE TO REGION OR LOCAL REQUIREMENTS IF NECESSARY

MARK	COMMON NAME	BOTANICAL NAME	SIZE	DETAIL	NOTES
	OCTOBER GLORY RED MAPLE	ACER RUBRUM 'OCTOBER GLORY'	2 1/2" CALIPER MIN.	5/L1.2	WELL BRANCHED, FULL HEAD, 10' HEIGHT MIN., B & B
	LITTLE LEAF BOXWOOD	BUXUS MICROPHYLLA	2' HEIGHT MIN.	4/L1.2	FULL PLANT

Order Plans @

WWW.LDILine.com