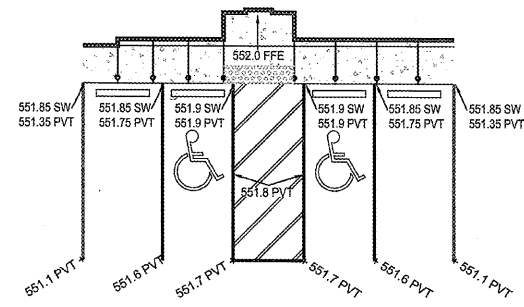
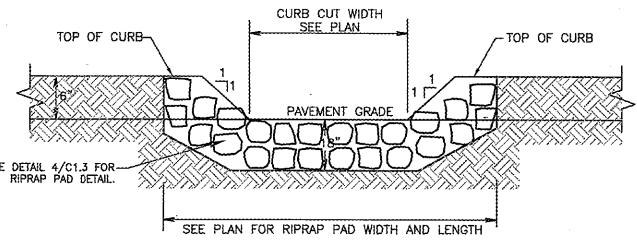


RECEIVED  
MAY 02 2018  
1736 EAST SUNSHINE ST. SUITE 417  
SPRINGFIELD, MO

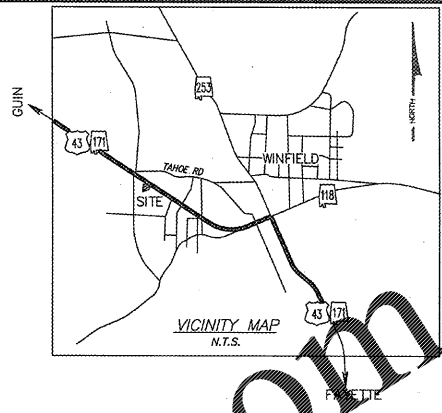


**1 HANDICAP PARKING DETAIL**  
C1.1 SCALE: 1" = 10'

HANDICAP AREA TO BE ADA COMPLIANT. SLOPES SHALL NOT EXCEED 2.0% IN ANY DIRECTION IN THIS AREA.



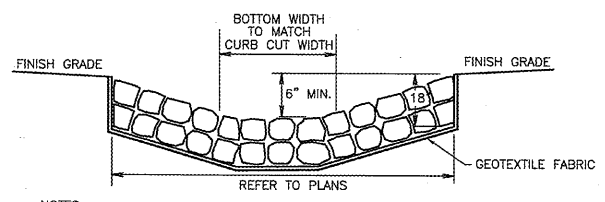
**2 CURB CUT WITH RIPRAP PAD**  
C1.1 SCALE: NOT TO SCALE



**ANDERSON ENGINEERING**  
EMPLOYEE OWNED  
ENGINEERS, SURVEYORS, LABORATORIES, DRILLING  
236 W. WOODWARD ST. WINFIELD, MISSOURI 65751  
PHONE: 417-862-2265  
FAX: 417-862-2265  
BY: JPH  
CND: NSB  
18SP10268

ALABAMA ONE CALL  
NO. 24881  
PROFESSIONAL  
ARCHITECT  
CRAIG A. SCHNEIDER, AIA  
ARCHITECT

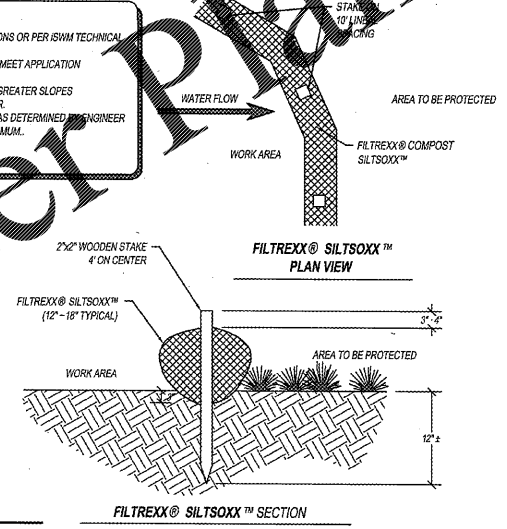
CRAIG A. SCHNEIDER, AIA  
ARCHITECT  
1736 East Sunshine, Suite 417  
Springfield, Missouri 65804  
417-862-0556  
417-862-2265  
e-mail: architect@eterfyschneider.com



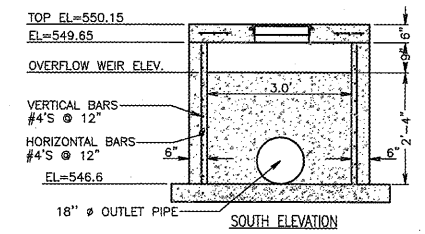
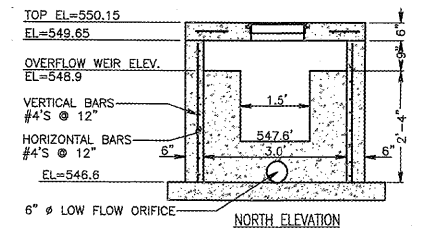
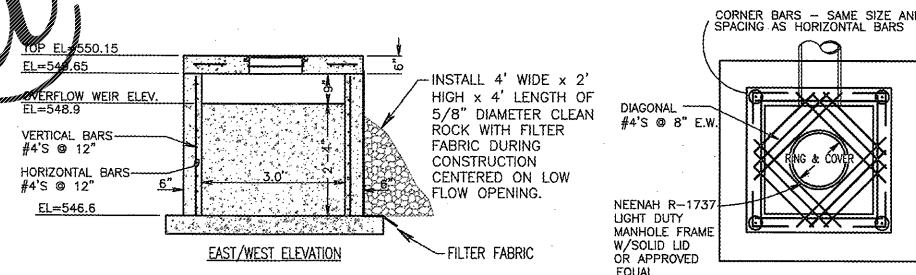
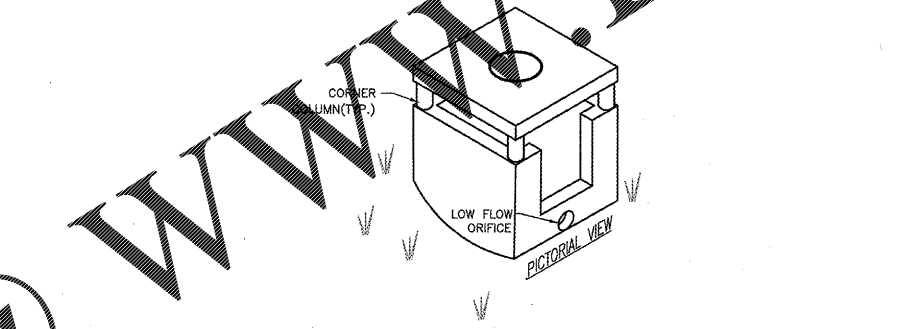
- NOTES:
- HAND PLACE RIP-RAP IN ALL PLACES AS INDICATED ON THE PLAN.
  - THE STONE FOR RIP-RAP SHALL CONSIST OF FIELD STONE OR ROUGH UNHEWN QUARRY STONE AS NEARLY AS UNIFORM, IN SECTION AS PRACTICAL.
  - THE STONES SHALL BE DENSE, RESISTANT TO THE ACTION OF AIR AND WATER, AND SUITABLE IN ALL ASPECTS FOR THE PURPOSE INTENDED UNLESS OTHERWISE SPECIFIED.
  - ALL STONES USED AS RIP-RAP SHALL WEIGH BETWEEN 50-150 POUNDS EACH, AND AT LEAST 60 PERCENT OF THE STONES SHALL WEIGH MORE THAN 100 POUNDS EACH.
  - STONES SHALL BE A MINIMUM OF 12" IN DIAMETER AND PLACED A MINIMUM OF 18" BELOW FINISH GRADE.
  - RIPRAP PAD SHALL HAVE NO SLOPE FOR THE LENGTH OF THE RIPRAP PAD.
  - FINISHED GRADE ADJACENT TO THE RIPRAP PAD SHALL BE A MINIMUM OF 6" ABOVE THE RIPRAP PAD BOTTOM.

**3 RIPRAP PAD**  
C1.2 SCALE: NOT TO SCALE

- NOTE:
- ALL MATERIAL TO MEET FILTREXX® SPECIFICATIONS OR PER ISWM TECHNICAL MANUAL FOR ORGANIC FILTER TUBES.
  - SILTSOXX™ COMPOST/SOIL/ROCKSEED FILL TO MEET APPLICATION REQUIREMENTS.
  - SILTSOXX™ DEPICTED IS FOR MINIMUM SLOPES. GREATER SLOPES MAY REQUIRE LARGER SOCKS PER THE ENGINEER.
  - COMPOST MATERIAL TO BE DISPERSED ON SITE, AS DETERMINED BY ENGINEER.
  - USE OF MULTIPLE SOCKS MUST OVERLAP 18" MINIMUM.



**4 FILTREXX SILTSOXX™**  
C1.2 SCALE: NOT TO SCALE



- GENERAL NOTES:
- ALL EXPOSED CORNERS TO HAVE 3/4" CHAMFER
  - ALL #4 & #5 REINFORCING BARS TO HAVE 1-1/2" COVER, LARGER SIZES TO HAVE 2" COVER.
  - PIPES SHALL CONNECT TO THE ENDS OR SIDES OF THE INLET. CONNECTION SHALL NOT BE MADE AT THE CORNERS OF THE INLET.
  - ALL REINFORCING BARS TO BE GRADE 60.
  - DURING CONSTRUCTION APPLY WIRE MESH AND 4"-6" SIZE CLEAN STONE AGAINST LOW FLOW FOR USE AS A SEDIMENT BASIN. AFTER CONSTRUCTION IS COMPLETED CLEAN OUT SEDIMENT FROM BASIN AND REMOVE WIRE MESH AND STONES.

**5 DETENTION OUTLET STRUCTURE**  
C1.2 SCALE: NOT TO SCALE

SYMBOLS LEGEND			
REFER TO SURVEY (SV1) FOR EXISTING CONDITION SYMBOLS LEGEND AND SITE CONTROL.			
---	552	EXISTING GRADE LINES	NEW SPOT ELEVATIONS LIST: GRADE SIDEWALK TOP OF WALL TOP OF CURB TOP OF PAVEMENT NEW GRADE CONCRETE EXISTING TOP OF CURB EXISTING GRADE EXISTING PAVEMENT EXISTING SIDEWALK FLOW LINE TOP OF BERM
---	552	PROPOSED NEW GRADE LINES	
[Hatched Box]		NEW BUILDING CONSTRUCTION	ABBREVIATION: NONE SW TW TC PVT CB CONC ETC ESD EPVT ESW FL TOP
[Circle]		NEW POLE SIGN LOCATION	
[Rectangle]		NEW CONCRETE PAVING BLOCK	TEMPORARY SIGNAGE: 1. NAIL IN POLE, ADJACENT TO NORTH CORNER OF SUBJECT PROPERTY. ELEVATION = 551.81 2. NAIL IN POLE, ADJACENT TO NORTHEAST CORNER OF SUBJECT PROPERTY. ELEVATION = 551.15
[Square]		TEMPORARY EROSION CONTROL FENCE	
[Arrow]		SURFACE FLOW ARROW	

PROJECT:  
NEW O'REILLY AUTO PARTS STORE  
US HWY 43  
WINFIELD, AL  
SITE GRADING DETAILS

O'Reilly AUTO PARTS  
CORPORATE OFFICES  
233 SOUTH PATTERSON  
SPRINGFIELD, MISSOURI 65802  
(417) 862-2674 TELEPHONE

COMM # 4308  
DATE: 5-03-19  
REVISION  
DATE:  
C1.2