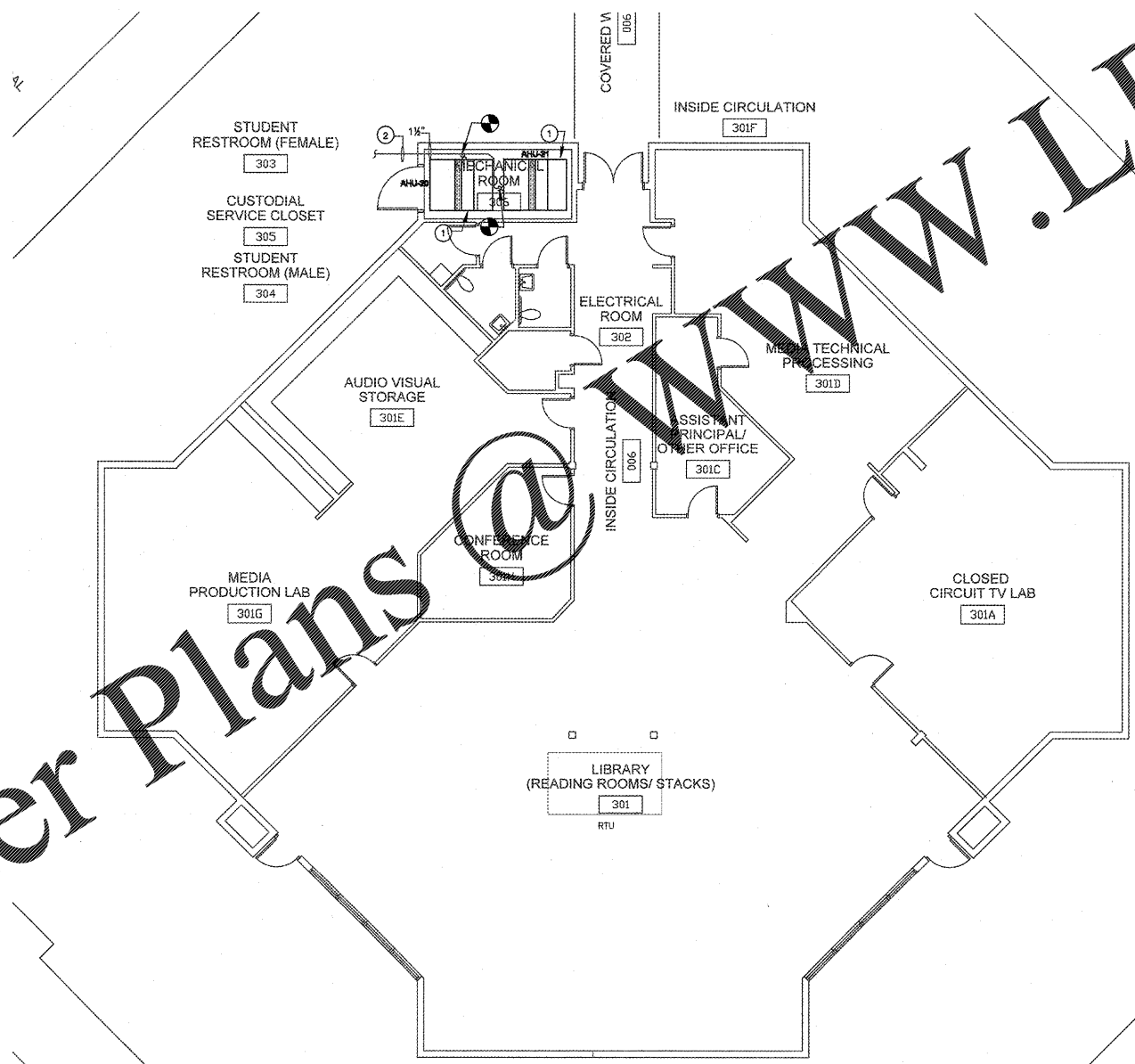


HAMMOND & ASSOCIATES, INC.
 CONSULTING ENGINEERS
 7348 NW 5TH STREET
 PLANTATION, FLORIDA 33317
 TEL: (954) 327-7111 FAX (954) 327-7154
 ERIC J. HAMMOND P.E.
 MECHANICAL / ELECTRICAL ENGINEER
 P.E. #39048
 EB 5315

CRAIN ATLANTIS
 ENGINEERING, INC.
 CONSULTING ENGINEERS & ARCHITECTS
 210 SW 10TH AVENUE
 DEERFIELD BEACH, FLORIDA 33441
 A 26001858 EB - 27488

Order Plans @ WWW.LDILine.com



LEGEND:
 ● POINT OF NEW CONNECTION

DRAWING KEY NOTES:
 ① LOCATION OF NEW AIR HANDLING UNIT. PROVIDE NEW CONDENSATE PIPING AS INDICATED AND CONNECT TO EXISTING LINE.
 ② EXISTING 2" CONDENSATE LINE BELOW GRADE.

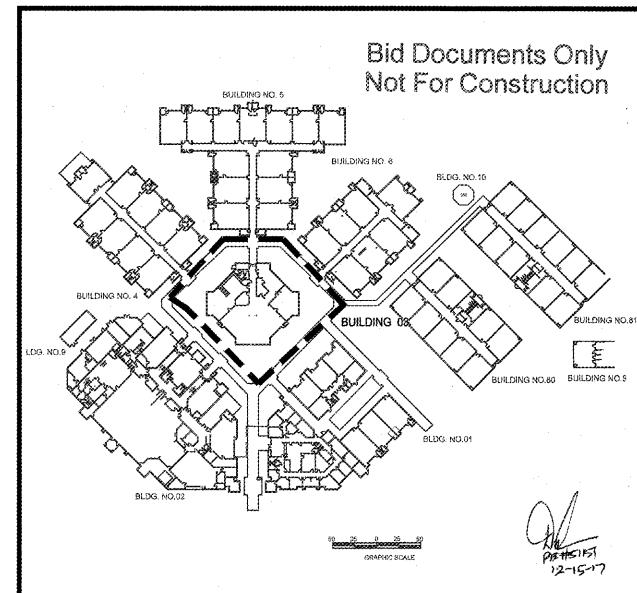
RECEIVED
 DEC 19 2017
 BUILDING DEPARTMENT
 BCPS

NO.	REVISIONS

SEA CASTLE
 ELEMENTARY SCHOOL
 9600 MIRAMAR BOULEVARD
 MIRAMAR, FLORIDA 33025



THE SCHOOL BOARD OF BROWARD COUNTY



2 PARTIAL PLUMBING FLOOR PLAN BUILDING 03
 SCALE: 1/8" = 1'-0"

1 KEY PLAN
 SCALE: 1" = 100'-0"

PARTIAL PLUMBING
 FLOOR PLAN BUILDING 03

100% SUBMITTAL
 JOB PHASE: P.001632
 SBBC PROJECT: P.001632
 DATE: 12.13.16
 SCALE: AS SHOWN
 DRAWN BY: HA
 CHECKED BY: EH
 CAE PROJECT NO. 201555

FL. LICENSE PE# 39048

ERIC HAMMOND
 PROFESSIONAL ENGINEER
 SEAL

DRAWING No.

P-103

THIS IS A VIOLATION OF THE LAW FOR ANY PERSON, UNLESS ACTING UNDER THE DIRECTION OF A LICENSED ARCHITECT, TO ALTER THESE PLANS AND SPECIFICATIONS. THIS DOCUMENT CONTAINS PROPERTY INFORMATION AND SHALL NOT BE USED OR REPRODUCED, IN WHOLE OR IN PART, WITHOUT THE PRIOR WRITTEN CONSENT OF CRAIN ATLANTIS ENGINEERING, INC. COPYRIGHT 2014 CRAIN ATLANTIS ENGINEERING, INC.