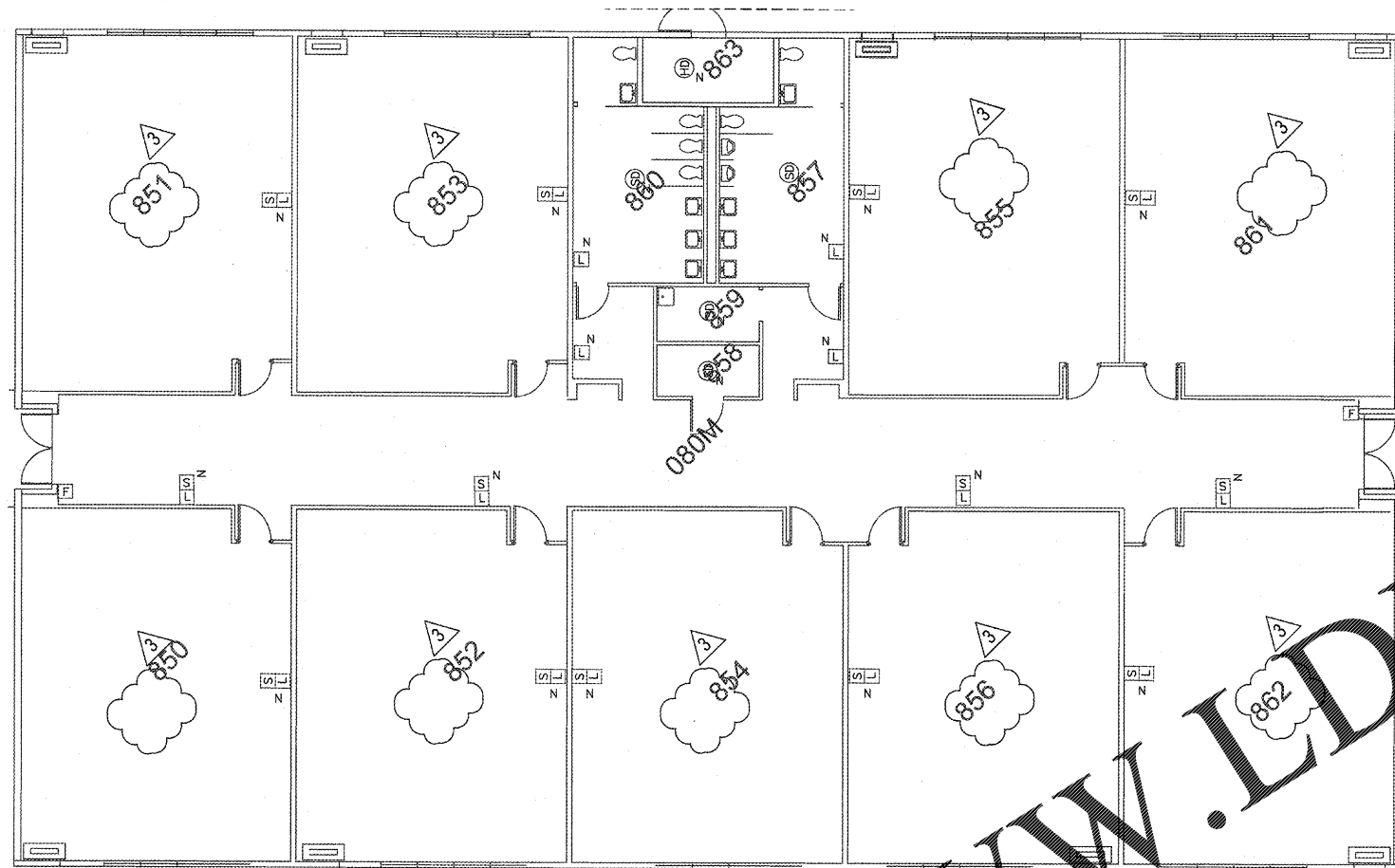


**FIRE ALARM GENERAL NOTES**

1. ALL FIRE ALARM DEVICES ARE NEW UNLESS OTHERWISE NOTED.
2. THE BATTERY BACK UP FOR ALARM AND SUPERVISORY FUNCTIONS SHALL BE ADEQUATE TO PROVIDE POWER AS REQUIRED BY CODE.
3. THE FIRE ALARM CONTRACTOR SHALL SUBMIT TO THE ENGINEER OF RECORD FOR REVIEW AND APPROVAL PRIOR TO SUBMITTAL TO THE BUILDING DEPARTMENT SIGNED AND SEALED SHOP DRAWINGS AND CALCULATIONS BY A LICENSED FLORIDA PROFESSIONAL ENGINEER FOR THE FIRE ALARM SYSTEM.
4. CONTRACTOR SHALL NOTIFY TO THE OWNER OR OWNERS REPRESENTATIVE AND A/E OF ANY EXISTING ALARM, SUPERVISORY OR TROUBLE CONDITION IN THE ALARM PANEL PRIOR TO COMMENCING WORK ON THE FIRE ALARM SYSTEM. ALARM PANEL SHALL BE CLEARED OF ALL TROUBLES BEFORE COMMENCING WORK.
5. REMOTE DUCT DETECTOR INDICATOR/TEST STATIONS IN ACCORDANCE W/ BCPS 13845 3.1 FOR ALL NEW AND REPLACEMENT AIR HANDLERS SHALL BE MOUNTED INSIDE THE MECHANICAL ROOM ADJACENT TO THE DOOR OPENING HARDWARE, UNIFORMLY SURFACE MOUNTED BETWEEN 48" TO 54" ABOVE THE FLOOR.
6. PROVIDE AN EMERGENCY VOICE EVACUATION SYSTEM IN DINING, MULTI-PURPOSE ROOM, OR ANY SPACE WHERE OCCUPANCY EXCEEDS 300 PEOPLE.



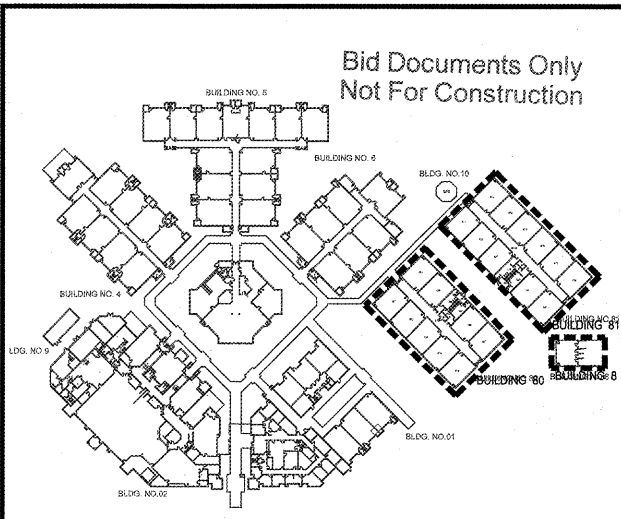
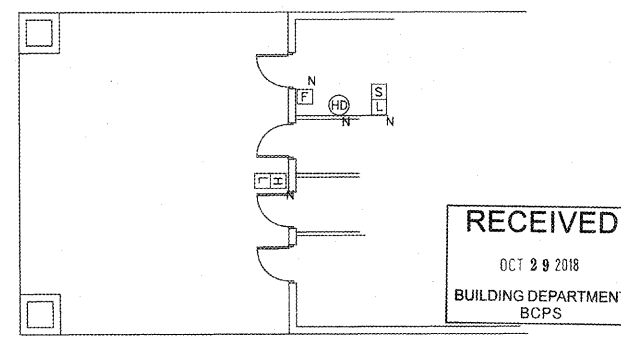
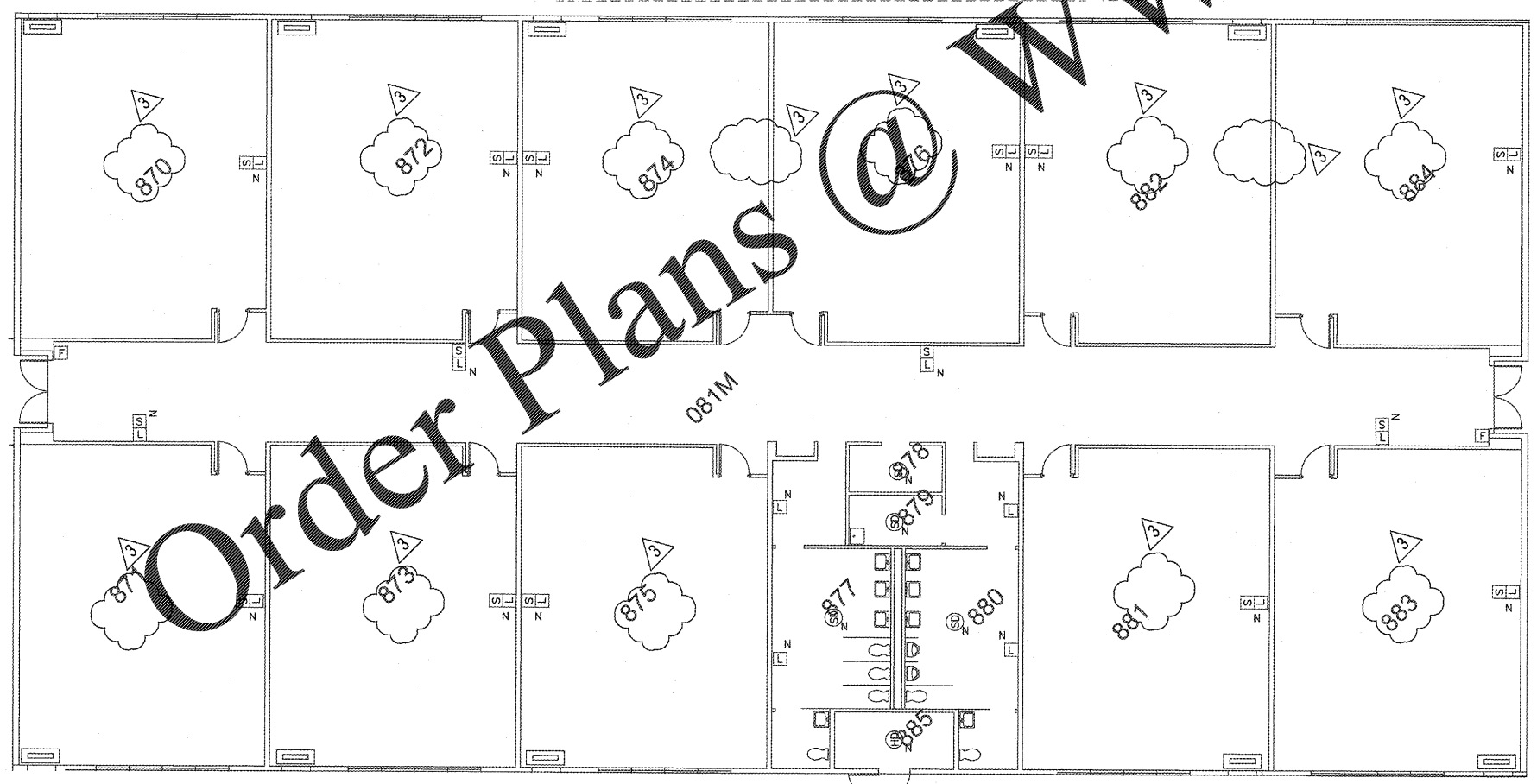
HAMMOND & ASSOCIATES, INC.  
 CONSULTING ENGINEERS  
 7348 NW 5TH STREET  
 PLANTATION, FLORIDA 33317  
 TEL: (954) 327-7111 FAX (954) 327-7154  
 ERIC J. HAMMOND P.E.  
 MECHANICAL / ELECTRICAL ENGINEER  
 P.E. #39048  
 EB 5315

**FIRE ALARM ABBREVIATIONS**

- E EXISTING TO REMAIN
- ETR EXISTING TO BE RELOCATED
- ETBR EXISTING TO BE REMOVED
- N NEW
- R RELOCATED
- RC ELEVATOR RECALL
- PV POST INDICATOR VALVE
- DDCV DOUBLE DETECTOR CHECK VALVE

**FIRE ALARM SYMBOLS**

- [FACP] FIRE ALARM CONTROL PANEL
- [FAAP] FIRE ALARM ANNUNCIATOR PANEL
- [PS1] FIRE ALARM POWER SUPPLY 1
- [PS2] FIRE ALARM POWER SUPPLY 2
- [F] ADDRESSABLE MANUAL PULL STATION
- [S] ADDRESSABLE PHOTOELECTRIC SMOKE DETECTOR
- [D] ADDRESSABLE DUCT DETECTOR
- [R] REMOTE ALARM/TEST SWITCH
- [HD] ADDRESSABLE HEAT DETECTOR
- [TS] TAMPER SWITCH
- [FS] FLOW SWITCH
- [L/S] SPEAKER/STROBE DEVICE
- [L] STROBE LIGHT
- [R] RELAY
- [M] MONITOR MODULE



2 PARTIAL FIRE ALARM FLOOR PLAN BUILDING 08, 80, 81  
 SCALE: 1/8" = 1'-0"

1 KEY PLAN  
 SCALE: 1" = 100'-0"

CRAIN ATLANTIS  
 ENGINEERING, INC.  
 CONSULTING ENGINEERS & ARCHITECTS  
 13500 BIRCHMOUNT AVENUE, SUITE 5441  
 BEVERLY HILLS, FLORIDA 33441  
 A 20001659 EB - 27498

REVISIONS	BUILDING DEPARTMENT COMMENTS	BUILDING DEPARTMENT COMMENTS	BUILDING DEPARTMENT COMMENTS
02/23/18			
07/10/18			
06/06/18			

SEA CASTLE  
 ELEMENTARY SCHOOL  
 9600 MIRAMAR BOULEVARD  
 MIRAMAR, FLORIDA 33025  
 THE SCHOOL BOARD OF BROWARD COUNTY

PARTIAL FIRE ALARM  
 FLOOR PLAN BUILDING 8, 80, 81

100% SUBMITTAL  
 JOB PHASE: SBBC PROJECT: P.001632 AS SHOWN  
 DATE: 12/13/16 SCALE: AS SHOWN  
 DRAWN BY: HA  
 CHECKED BY: EH  
 ICAE PROJECT NO. 2015.55

DRAWING No.  
**E-307**

THIS IS A VIOLATION OF THE LAW FOR ANY PERSON, UNLESS ACTING UNDER THE DIRECTION OF A LICENSED ARCHITECT, TO ADAPT THESE PLANS AND SPECIFICATIONS, OR TO ADAPT THESE PLANS AND SPECIFICATIONS, TO ANY OTHER PROJECT, WITHOUT THE WRITTEN CONSENT OF CRAIN ATLANTIS ENGINEERING, INC. COPYRIGHT 2014 CRAIN ATLANTIS ENGINEERING, INC.