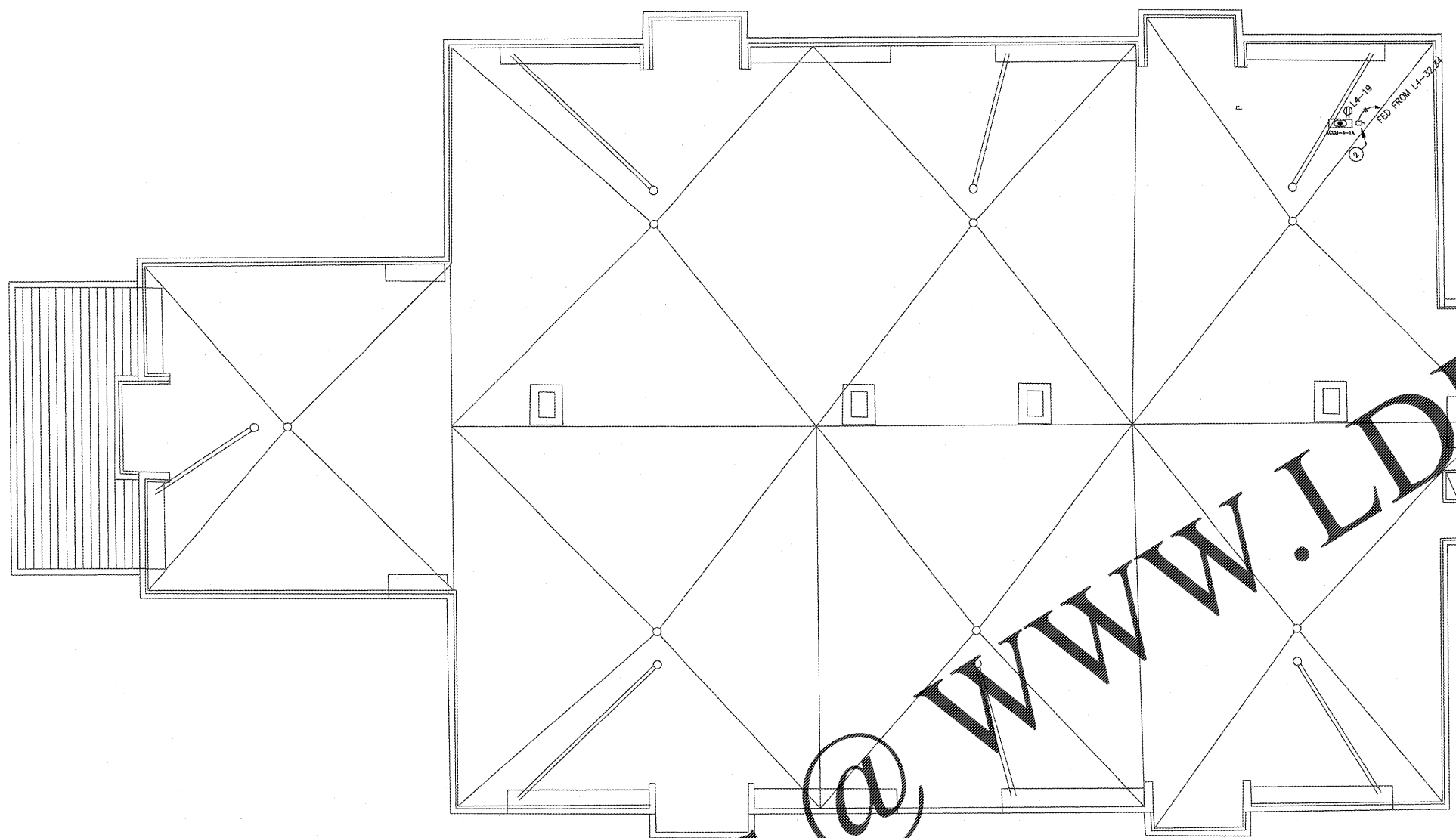


HAMMOND & ASSOCIATES, INC.
 CONSULTING ENGINEERS
 7348 NW 5TH STREET
 PLANTATION, FLORIDA 33317
 TEL: (954) 327-7111 FAX (954) 327-7154
 ERIC J. HAMMOND P.E.
 MECHANICAL / ELECTRICAL ENGINEER
 P.E. #39048
 EB 5315

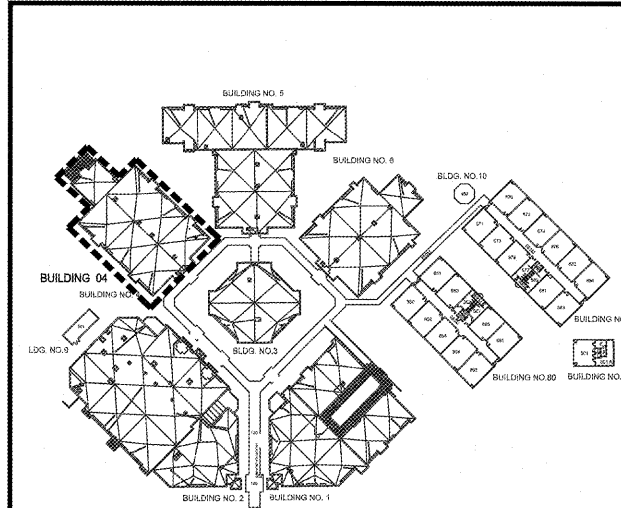
CRAIN ATLANTIS
 ENGINEERING, INC.
 CONSULTING ENGINEERS & ARCHITECTS
 210 SW NINTWA AVENUE
 DEERFIELD BEACH, FLORIDA 33441
 AA 26001858 EB - 27488



DRAWING KEY NOTES:
 ① LOCATION OF NEW RTU LOCATED ON ROOF. PROVIDE NEW DISCONNECT, CONDUIT, AND WIRING AS REQUIRED.
 ② LOCATION OF NEW GFI OUTLET. FED FROM EXISTING CIRCUIT.

RECEIVED
 MAR 06 2018
 BUILDING DEPARTMENT
 BCPS

Bid Documents Only
 Not For Construction



Order Plans @ www.LDILine.com

2 MECHANICAL DEMOLITION ROOF PLAN BUILDING 03
 SCALE: 1/8" = 1'-0"

1 KEY PLAN
 SCALE: 1" = 100'-0"

REVISIONS

NO.	DATE	DESCRIPTION
1	02/23/18	BUILDING DEPARTMENT COMMENTS

SEA CASTLE
 ELEMENTARY SCHOOL
 9600 MIRAMAR BOULEVARD
 MIRAMAR, FLORIDA 33025



THE SCHOOL BOARD OF BROWARD COUNTY

ELECTRICAL ROOF
 PLAN BUILDING 04

100% SUBMITTAL
 JOB PHASE: P-001632
 SBDC PROJECT: P-001632
 DATE: 12.13.16
 SCALE: AS SHOWN
 DRAWN BY: HA
 CHECKED BY: EH
 CAE PROJECT NO. 2015.55

FL. LICENSE PE# 39048
 ERIC J. HAMMOND
 PROFESSIONAL ENGINEER
 STATE OF FLORIDA

DRAWING No.
E-204

THIS IS A VIOLATION OF THE LAW FOR ANY PERSON, UNLESS ACTING UNDER THE DIRECTION OF A LICENSED ARCHITECT, TO ALTER THESE PLANS AND SPECIFICATIONS. THIS DOCUMENT CONTAINS PROPERTY INFORMATION AND SHALL NOT BE USED OR REPRODUCED, OR ITS CONTENTS DISCLOSED, IN WHOLE OR IN PART, WITHOUT THE PRIOR WRITTEN CONSENT OF CRAIN ATLANTIS ENGINEERING, INC. COPYRIGHT 2014 CRAIN ATLANTIS ENGINEERING, INC.