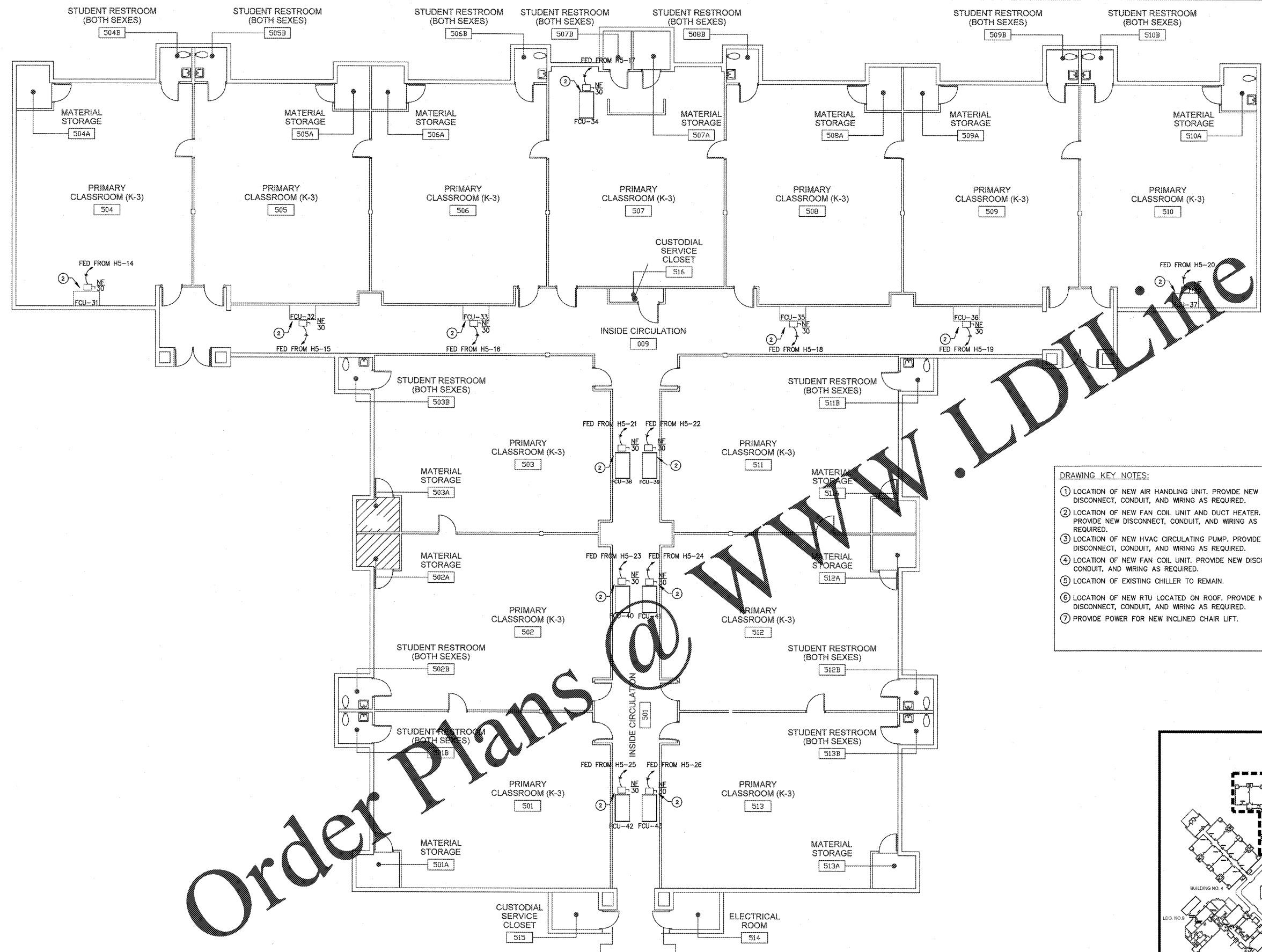


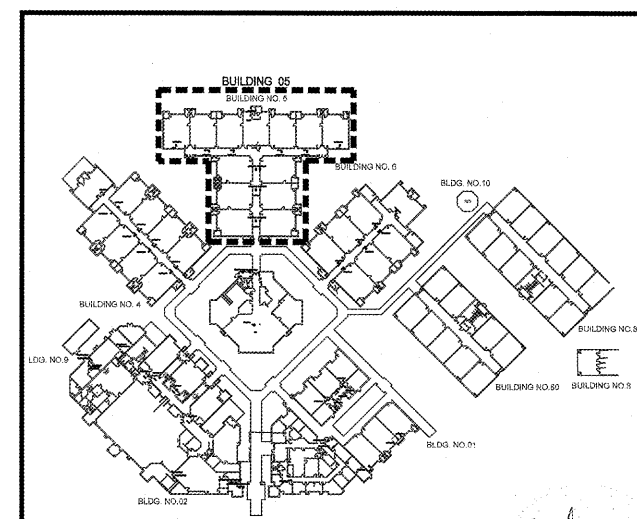
HAMMOND & ASSOCIATES, INC.
 CONSULTING ENGINEERS
 7348 NW 5TH STREET
 PLANTATION, FLORIDA 33317
 TEL: (954) 327-7111 FAX: (954) 327-7154
 ERIC J. HAMMOND P.E.
 MECHANICAL / ELECTRICAL ENGINEER
 P.E. #39048
 EB 5315

CRAIN ATLANTIS
 ENGINEERING, INC.
 CONSULTING ENGINEERS & ARCHITECTS
 210 SW NINFA AVENUE
 DEERFIELD BEACH, FLORIDA 33441
 AA 8601808 EB - 27488



- DRAWING KEY NOTES:**
- ① LOCATION OF NEW AIR HANDLING UNIT. PROVIDE NEW DISCONNECT, CONDUIT, AND WIRING AS REQUIRED.
 - ② LOCATION OF NEW FAN COIL UNIT AND DUCT HEATER. PROVIDE NEW DISCONNECT, CONDUIT, AND WIRING AS REQUIRED.
 - ③ LOCATION OF NEW HVAC CIRCULATING PUMP. PROVIDE NEW DISCONNECT, CONDUIT, AND WIRING AS REQUIRED.
 - ④ LOCATION OF NEW FAN COIL UNIT. PROVIDE NEW DISCONNECT CONDUIT, AND WIRING AS REQUIRED.
 - ⑤ LOCATION OF EXISTING CHILLER TO REMAIN.
 - ⑥ LOCATION OF NEW RTU LOCATED ON ROOF. PROVIDE NEW DISCONNECT, CONDUIT, AND WIRING AS REQUIRED.
 - ⑦ PROVIDE POWER FOR NEW INCLINED CHAIR LIFT.

RECEIVED
 DEC 19 2017
 BUILDING DEPARTMENT
 BCPS



Order Plans @ www.LDILine.com

SEA CASTLE
 ELEMENTARY SCHOOL
 9600 MIRAMAR BOULEVARD
 MIRAMAR, FLORIDA 33025

THE SCHOOL BOARD OF BROWARD COUNTY

PARTIAL ELECTRICAL
 FLOOR PLAN BUILDING 05

JOB PHASE: 100% SUBMITTAL
 SBC PROJECT: P 001632
 DATE: 12.13.16
 SCALE: AS SHOWN
 DRAWN BY: HA
 CHECKED BY: E.H.
 FL LICENSE PE# 39048
 CAE PROJECT No. 2015.05

ERIC HAMMOND
 PROFESSIONAL ENGINEER
 SEAL

DRAWING No.
E-105

THIS IS A VIOLATION OF THE LAW FOR ANY PERSON, UNLESS ACTING UNDER THE DIRECTION OF A LICENSED ARCHITECT, TO ALTER, REPRODUCE, OR IN ANY MANNER, WITHOUT THE PRIOR WRITTEN CONSENT OF CRAIN ATLANTIS ENGINEERING, INC. COPYRIGHT 2014 CRAIN ATLANTIS ENGINEERING, INC.