

HAMMOND & ASSOCIATES, INC.
 CONSULTING ENGINEERS
 7348 NW 5TH STREET
 PLANTATION, FLORIDA 33317
 TEL: (954) 327-7111 FAX (954) 327-7154
 ERIC J. HAMMOND P.E.
 MECHANICAL / ELECTRICAL ENGINEER
 P.E. #39048
 EB 5315

- DRAWING KEY NOTES:**
- 1 LOCATION OF NEW AIR HANDLING UNIT. PROVIDE NEW DISCONNECT, CONDUIT, AND WIRING AS REQUIRED.
 - 2 LOCATION OF NEW FAN COIL UNIT AND DUCT HEATER. PROVIDE NEW DISCONNECT, CONDUIT, AND WIRING AS REQUIRED.
 - 3 LOCATION OF NEW HVAC CIRCULATION PUMP. PROVIDE NEW DISCONNECT, CONDUIT, AND WIRING AS REQUIRED.
 - 4 LOCATION OF NEW FAN COIL UNIT. PROVIDE NEW DISCONNECT, CONDUIT, AND WIRING AS REQUIRED.
 - 5 LOCATION OF EXISTING CHAIR LIFT TO REMAIN.
 - 6 LOCATION OF NEW RTU LOCATION ON ROOF. PROVIDE NEW DISCONNECT, CONDUIT, AND WIRING AS REQUIRED.
 - 7 PROVIDE POWER FOR NEW INCLINED CHAIR LIFT. ELECTRICAL SERVICE TO BE COORDINATED WITH SHOP DRAWING. SUBMIT CHAIR LIFT TO BE PROVIDED WITH AUXILIARY BATTERY BACK-UP FOR EMERGENCY OPERATION.
 - 8 LOCATION OF NEW AIR CONDITIONING CONDENSING UNIT. PROVIDE NEW DISCONNECT, CONDUIT, AND WIRING AS REQUIRED.
 - 9 LOCATION OF NEW GFI OUTLET.
 - 10 LOCATION OF NEW GFI OUTLET. FED FROM EXISTING CIRCUIT.
 - 11 LOCATION OF NEW ROOFTOP EXHAUST FAN. PROVIDE NEW DISCONNECT, CONDUIT, AND WIRING AS REQUIRED.

CRAIN ATLANTIS ENGINEERING, INC.
 CONSULTING ENGINEERS & ARCHITECTS
 210 SW PALM AVENUE
 SUITE 200
 MIAMI, FLORIDA 33135
 TEL: (305) 371-5011
 FAX: (305) 371-5011
 A 22001850 EB - 27489
 COPYRIGHT 2014 CRAIN ATLANTIS ENGINEERING, INC.

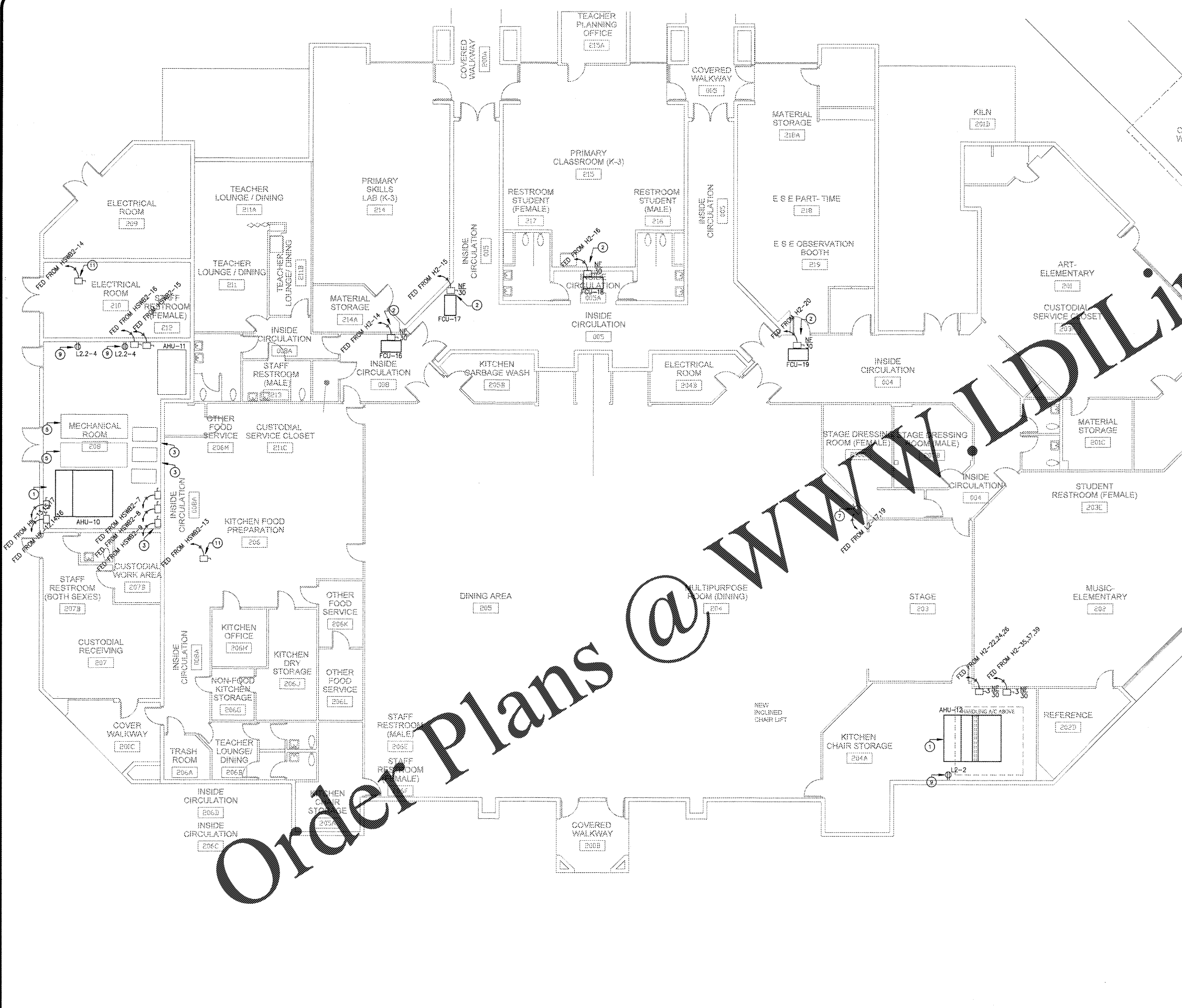
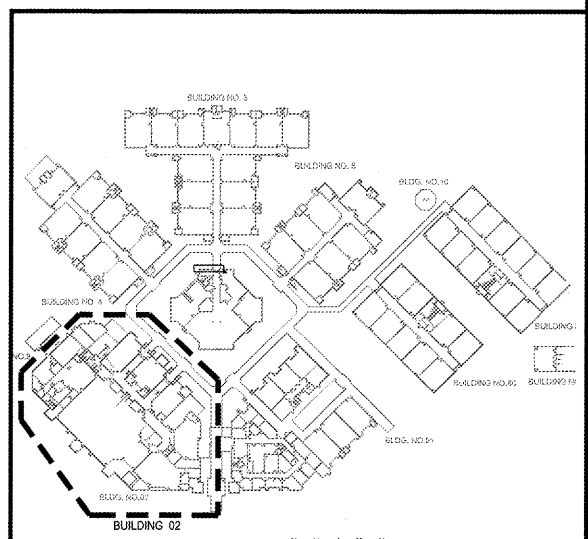
REVISIONS	BUILDING DEPARTMENT COMMENTS	BUILDING DEPARTMENT COMMENTS
Δ 10/23/18		
Δ 07/10/18		

SEA CASTLE ELEMENTARY SCHOOL
 9600 MIRAMAR BOULEVARD
 MIRAMAR, FLORIDA 33025

THE SCHOOL BOARD OF BROWARD COUNTY

RECEIVED
 JUL 18 2018
 BUILDING DEPARTMENT
 BCPS

Bid Documents Only
 Not For Construction



Order Plans @ www.lidilinc.com

100% SUBMITTAL
 P-001632
 JOB PHASE: SBCC PROJECT
 DATE: 12.13.18
 SCALE: AS SHOWN
 HA HA E.H.
 DRAWN BY: E.H.
 CHECKED BY: E.H.
 CAE PROJECT No. 2015.55

SEAL
 DRAWING No.
E-102

THIS IS A VIOLATION OF THE LAW FOR ANY PERSON, UNLESS ACTING UNDER THE DIRECTION OF A LICENSED ARCHITECT, TO ALTER THESE PLANS AND SPECIFICATIONS. THIS DOCUMENT CONTAINS PROPERTY INFORMATION AND SHALL NOT BE USED OR REPRODUCED, OR ITS CONTENTS DISCLOSED, IN WHOLE OR IN PART, WITHOUT THE PRIOR WRITTEN CONSENT OF CRAIN ATLANTIS ENGINEERING, INC.