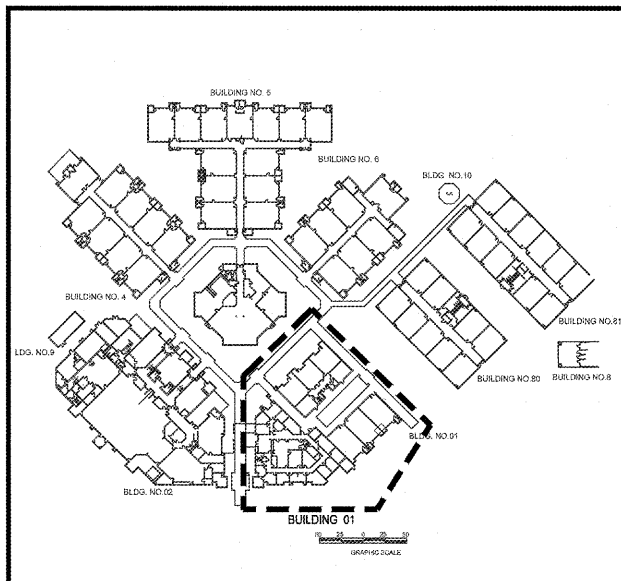


- DRAWING KEY NOTES:**
- LOCATION OF NEW AIR HANDLING UNIT. PROVIDE DISCONNECT, CONDUIT, AND WIRING AS REQUIRED.
 - LOCATION OF NEW COIL UNIT AND DUCT HEATER. PROVIDE NEW DISCONNECT, CONDUIT AND WIRING AS REQUIRED.
 - LOCATION OF NEW HVAC CIRCULATING PUMP. PROVIDE NEW DISCONNECT, CONDUIT AND WIRING AS REQUIRED.
 - LOCATION OF NEW FAN COIL UNIT. PROVIDE NEW DISCONNECT CONDUIT, AND WIRING AS REQUIRED.
 - LOCATION OF EXISTING CHILLER TO REMAIN.
 - LOCATION OF NEW RTU LOCATED ON ROOF. PROVIDE NEW DISCONNECT, CONDUIT, AND WIRING AS REQUIRED.
 - PROVIDE POWER FOR NEW INCLINED CHAIR LIFT. ELECTRICAL SERVICE TO BE COORDINATED WITH SHOP DRAWING SUBMITTAL.
 - LOCATION OF NEW AIR CONDITIONING CONDENSING UNIT. PROVIDE NEW DISCONNECT, CONDUIT, AND WIRING AS REQUIRED.
 - LOCATION OF NEW GFI OUTLET.
 - LOCATION OF NEW GFI OUTLET. FED FROM EXISTING CIRCUIT.
 - LOCATION OF NEW ROOFTOP EXHAUST FAN. PROVIDE NEW DISCONNECT, CONDUIT, AND WIRING AS REQUIRED.

RECEIVED
 MAR 06 2018
 BUILDING DEPARTMENT
 BCPS



2 PARTIAL ELECTRICAL FLOOR PLAN BUILDING 01
 SCALE: 1/8" = 1'-0"

1 KEY PLAN
 SCALE: 1" = 100'-0"

Bid Documents Only
 Not For Construction

REVISIONS	BUILDING DEPARTMENT COMMENTS
02/23/18	
A	

SEA CASTLE
 ELEMENTARY SCHOOL
 9600 MIRAMAR BOULEVARD
 MIRAMAR, FLORIDA 33025



THE SCHOOL BOARD OF BROWARD COUNTY

PARTIAL ELECTRICAL
 FLOOR PLAN BUILDING 01

JOB PHASE: 100% SUBMITTAL
 888C PROJECT: P.001632
 DATE: 12.13.16
 SCALE: AS SHOWN
 DRAWN BY: HA
 CHECKED BY: E.H.
 CAE PROJECT NO. 2015.55

ERIC J. HAMMOND
 PROFESSIONAL ENGINEER
 SEAL

DRAWING No.

E-101

IT IS A VIOLATION OF THE LAW FOR ANY PERSON, UNLESS ACTING UNDER THE DIRECTION OF A LICENSED ARCHITECT, TO ALTER THESE PLANS AND SPECIFICATIONS. THIS DOCUMENT CONTAINS PROPERTY INFORMATION AND SHALL NOT BE USED OR REPRODUCED, IN WHOLE OR IN PART, WITHOUT THE PRIOR WRITTEN CONSENT OF CRAIN ATLANTIS ENGINEERING, INC.