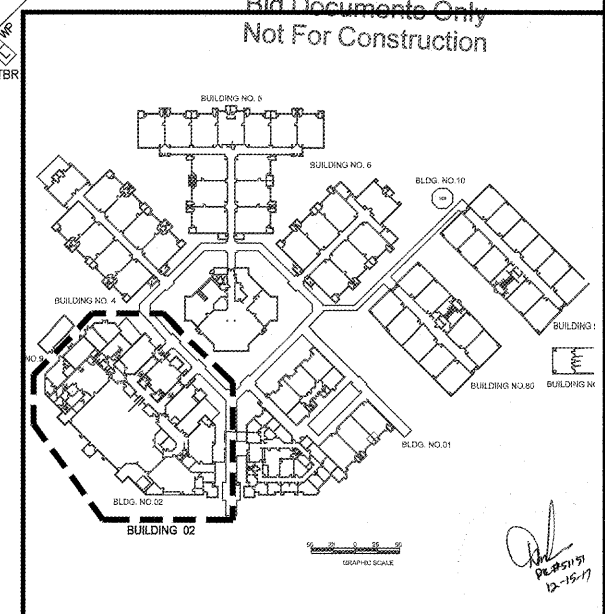


FIRE ALARM SYMBOLS	
[FACP]	FIRE ALARM CONTROL PANEL
[FAAP]	FIRE ALARM ANNUNCIATOR PANEL
[PS1]	FIRE ALARM POWER SUPPLY 1
[PS2]	FIRE ALARM POWER SUPPLY 2
[F]	ADDRESSABLE MANUAL PULL STATION
[SD]	ADDRESSABLE PHOTOELECTRIC SMOKE DETECTOR
[D]	ADDRESSABLE DUCT DETECTOR
[R]	REMOTE ALARM/TEST SWITCH
[HD]	ADDRESSABLE HEAT DETECTOR
[TS]	TAMPER SWITCH
[FS]	FLOW SWITCH
[LH]	HORN/STROBE DEVICE
[L]	STROBE LIGHT
[R]	RELAY
[M]	MONITOR MODULE

FIRE ALARM ABBREVIATIONS	
E	EXISTING TO REMAIN
ETR	EXISTING TO BE RELOCATED
ETBR	EXISTING TO BE REMOVED
N	NEW
R	RELOCATED
RC	ELEVATOR RECALL
PV	POST INDICATOR VALVE
DDCV	DOUBLE DETECTOR CHECK VALVE



RECEIVED
 DEC 19 2017
 BUILDING DEPARTMENT
 BCPS

CRAIN ATLANTIS
 ENGINEERING, INC.
 CONSULTING ENGINEERS & ARCHITECTS
 210 SW 14TH AVENUE
 DEERFIELD BEACH, FLORIDA 33441
 (561) 877-0011
 FAX 561-877-0011
 EA 26001858 EB - 27489

SEA CASTLE
 ELEMENTARY SCHOOL
 9600 MIRAMAR BOULEVARD
 MIRAMAR, FLORIDA 33025



THE SCHOOL BOARD OF BROWARD COUNTY

PARTIAL DEMOLITION
 FIRE ALARM FLOOR PLAN
 BUILDING 02

JOB PHASE: 100% SUBMITTAL
 SBBC PROJECT: P-001632
 DATE: 12.13.16
 SCALE: AS SHOWN
 DRAWN BY: HA
 CHECKED BY: E.H.
 CAE PROJECT NO. 2016.55
 FL LICENSE PE# 39048

ERIC HAMMOND
 PROFESSIONAL ENGINEER
 SEAL

DRAWING No.

DE-302

Order Plans @ WWW.EDLine.com