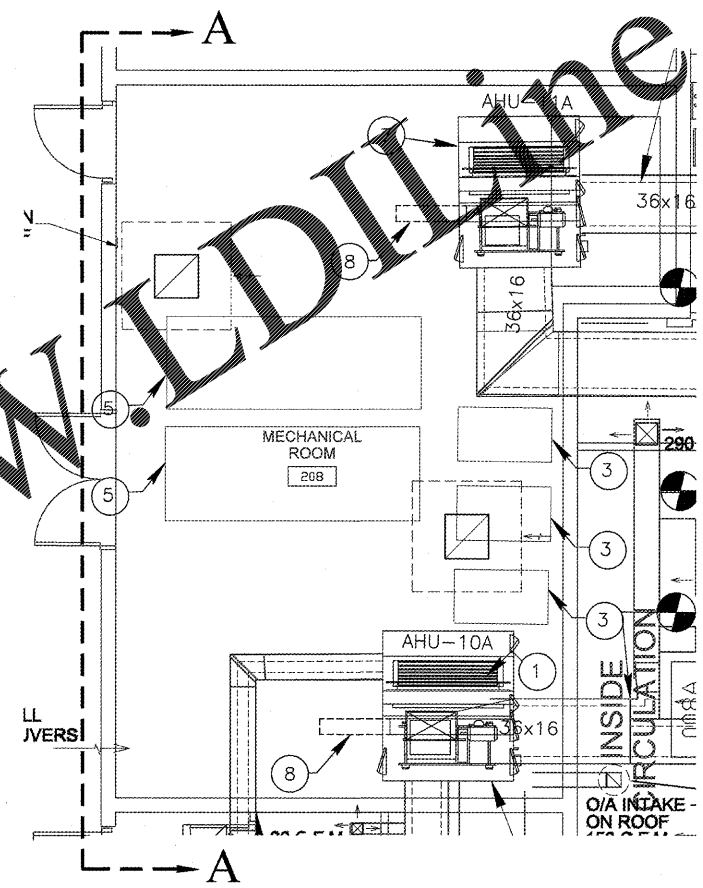


1 SECTION A--A MECHANICAL RM 208, BLDG 02  
 SCALE: 3/8" = 1'-0"



2 ENLARGEMENT OF MECHANICAL RM 208 BLDG 02  
 SCALE: 3/8" = 1'-0"

RECEIVED  
 MAR 06 2018  
 BUILDING DEPARTMENT  
 BCPS

Order Plans @ WWW.LDLINE.COM

Bid Documents Only  
 Not For Construction

- DRAWING KEY NOTES:
- ① LOCATION OF NEW AIR HANDLING UNIT.
  - ② LOCATION OF NEW FAN COIL UNIT AND NEW DUCT HEATER.
  - ③ LOCATION OF NEW HVAC CIRCULATING PUMP.
  - ④ NOT USED.
  - ⑤ EXISTING CHILLER TO REMAIN.
  - ⑥ NOT USED.
  - ⑦ EXISTING AIR HANDLER UNIT TO REMAIN.
  - ⑧ COIL PULL AREA

CHANGES MADE TO  
 ENTIRE SHEET

SEA CASTLE  
 ELEMENTARY SCHOOL  
 9600 MIRAMAR BOULEVARD  
 MIRAMAR, FLORIDA 33025



THE SCHOOL BOARD OF BROWARD COUNTY

MECHANICAL ROOM  
 ENLARGEMENT  
 AND SECTION PLAN

JOB PHASE: 100% SUBMITTAL  
 SBBC PROJECT: P-001632  
 DATE: 12.13.16  
 SCALE: AS SHOWN  
 DRAWN BY: HA  
 CHECKED BY: E.H.  
 CAE PROJECT NO. 2016.55

FL LIC. NO. 12568  
 ERIC J. HAMMOND  
 PROFESSIONAL ENGINEER  
 SEAL

DRAWING No.  
 M-200