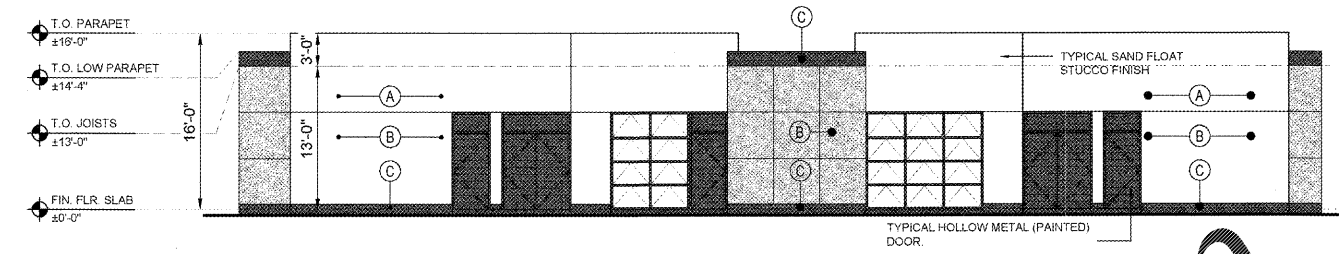
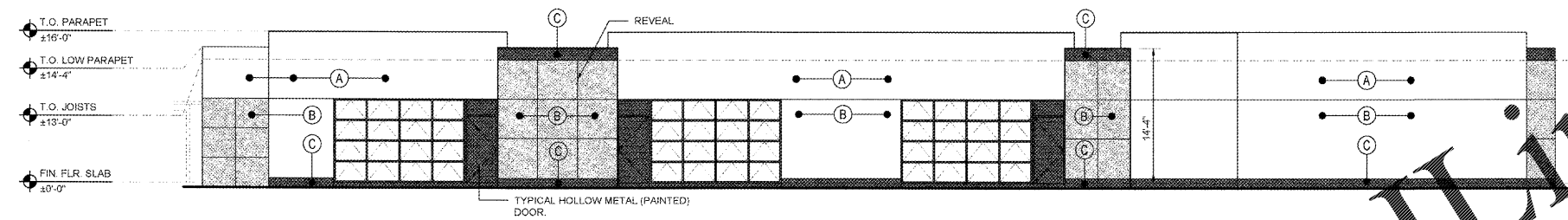


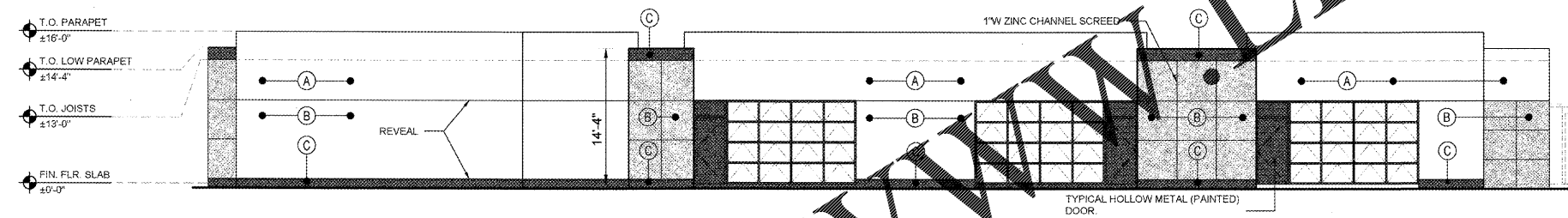
F NORTH ELEV. - BUILDING #6
SCALE: 1/8"=1'-0"



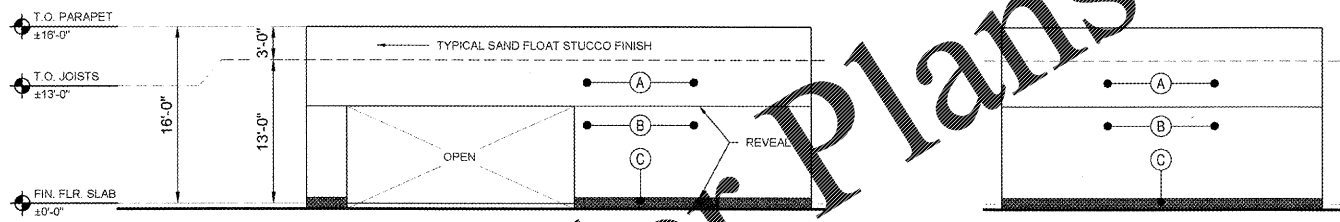
H SOUTH ELEV. - BUILDING #6
SCALE: 1/8"=1'-0"



G WEST ELEV. - BUILDING #6
SCALE: 1/8"=1'-0"

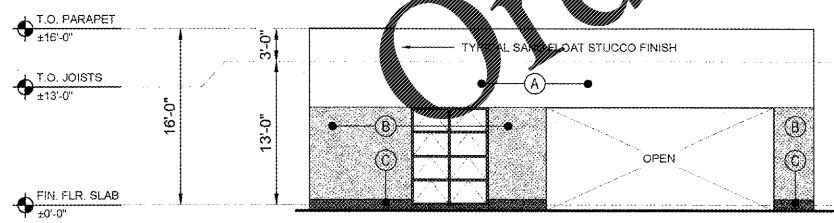


I EAST ELEV. - BUILDING #6
SCALE: 1/8"=1'-0"

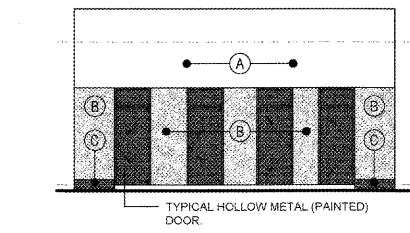


J WEST ELEV. - BUILDING #8
SCALE: 1/8"=1'-0"

K SOUTH ELEV. - BUILDING #8
SCALE: 1/8"=1'-0"



L EAST ELEV. - BUILDING #8
SCALE: 1/8"=1'-0"



M NORTH ELEV. - BUILDING #8
SCALE: 1/8"=1'-0"

PAINT SCHEDULE		
(A)	INDICATE PAINT COLOR	LOW-SHEEN (EGGSHELL) ACRYLIC LATEX PAINT FOR EXTERIOR
(B)	INDICATE PAINT COLOR	SEMIGLOSS WATER BORNE ACRYLIC-LATEX ENAMEL FOR EXTERIOR.
(C)	INDICATE PAINT COLOR	SEMIGLOSS WATER BORNE ACRYLIC-LATEX ENAMEL FOR EXTERIOR.

- NOTES**
- CONTRACTOR TO TAKE A PAINT SAMPLE CHIP FOR TESTING; TO MATCH EXISTING BUILDING COLOR.
 - THE PAINT MANUFACTURE MUST COMPLY WITH THE SBBC SPECIFICATION SECTION 09900-PAINTING AND SECTION 09910 REMEDIAL PAINTING.
 - PROVIDE A FULL-COAT BENCH MARK SAMPLE (MOCK UPS) FOR EACH TYPE OF COATING FINAL APPROVAL OF COLORS WILL BE FROM BENCH MARK SAMPLE.
 - SINGLE SOURCE RESPONSIBILITY: PROVIDE PRIMERS + PAINTS FOR EXTERIOR ITEMS AND SURFACES BY THE SAME MANUFACTURE.

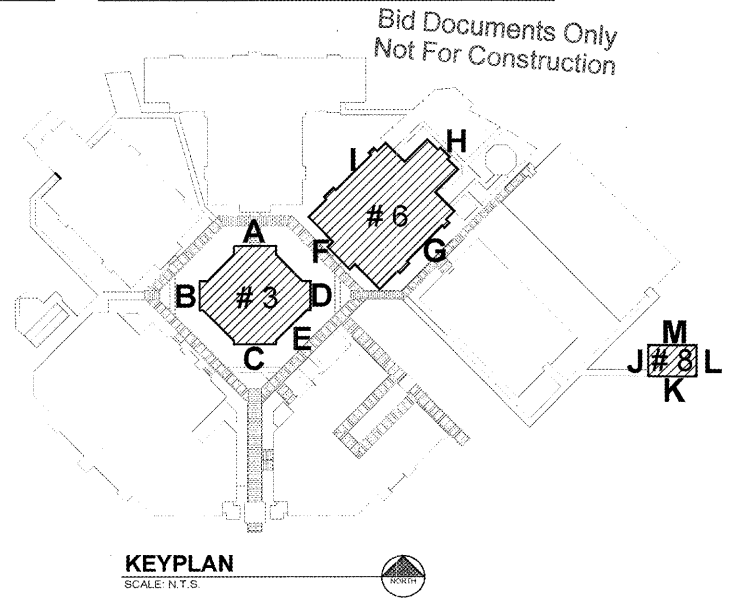
NOTE:
G.C. TO SURVEY ALL TILT-UP PANEL EXPANSION JOINTS AND REPAIR W/ NEW BACKER ROD AND SEALANT AS NECESSARY. PROVIDE SEPARATE LINE ITEM BID PRICE PER LINEAL FT. TO OWNER FOR APPROVAL.

SCOPE OF WORK:
ENTIRE PAINT EXTERIOR BUILDING ENVELOPE ON THE FOLLOWING BUILDINGS: BUILDING 3, BUILDING 6 AND BUILDING 8. REFER TO SPECIFICATIONS.

TOTAL PAINTING APROX.
BUILDING #3 = 4,769 SQ.SF.
BUILDING #6 = 8,500 SQ.SF.
BUILDING #8 = 1,161 SQ.SF.

100% CONSTRUCTION DOCUMENTS
12-13-2017

NOTE:
ALL DIMENSIONS AND EXACT LOCATION OF ALL EXISTING EQUIPMENT AND ASSOCIATED PARTS AND ACCESSORIES ARE TO BE FIELD VERIFIED BY THE CONTRACTOR.



RECEIVED
DEC 19 2017
BUILDING DEPARTMENT
BCPS

Order Plans @ WWW.LDILine.com

CRAIN ATLANTIS ENGINEERING, INC.
CONSULTING ENGINEERS & ARCHITECTS
210 SW WATER AVENUE
DEERFIELD BEACH, FLORIDA 33441
(561) 971-2411
FL 26010543 CD - 27486

NO.	DATE	DESCRIPTION

SEA CASTLE ELEMENTARY SCHOOL
9600 MIRAMAR BOULEVARD
MIRAMAR, FLORIDA 33025
THE SCHOOL BOARD OF BROWARD COUNTY

EXTERIOR ELEVATIONS

100% CONSTRUCTION DOCUMENTS
SBBC PROJECT: P.001632
DATE: 12-13-2017
SCALE: AS SHOWN
DRAWN BY: C.A.E.
CHECKED BY: A.O./R.P.
CAE PROJECT No. 201655

STATE OF FLORIDA
CHARLES CEPEDA
REGISTERED ARCHITECT
AR # 94196

DRAWING No.
A-7.1

IT IS A VIOLATION OF THE LAW FOR ANY PERSON UNLESS ACTING UNDER THE DIRECTION OF A LICENSED ARCHITECT, TO ALTER THESE PLANS AND SPECIFICATIONS. THIS DOCUMENT CONTAINS PROPERTY INFORMATION AND SHALL NOT BE USED OR REPRODUCED, OR ITS CONTENTS DISCLOSED, IN WHOLE OR IN PART, WITHOUT THE PRIOR WRITTEN CONSENT OF CRAIN ATLANTIS ENGINEERING, INC. COPYRIGHT 2014 CRAIN ATLANTIS ENGINEERING, INC.