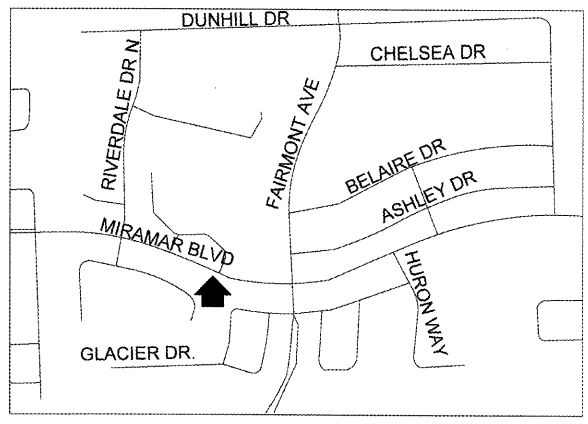


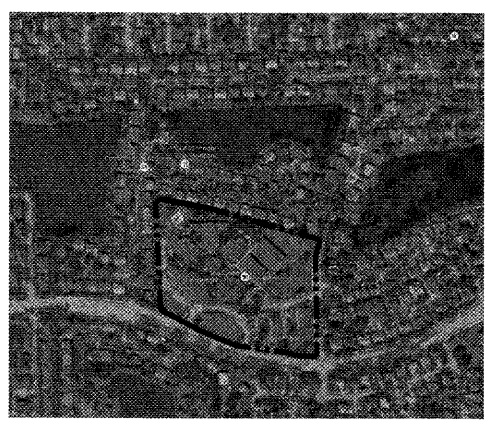
SEA CASTLE ELEMENTARY SCHOOL

9600 MIRAMAR BOULEVARD, MIRAMAR, FLORIDA 33025

Facility: Sea Castle ES
 Project Name: GOB Renovations
 Project Manager: Ron Barton
 Architect: Crain Atlantis
 Site#: 2871
 BDN#: 201714100PR0343R02
 Sap/WO#: P001632
 Plan Change#: _____
 Shop Drawings: _____
 Date Received: 03-06-18
 Copies: 4
 Items#: 2 of 2
 ID Number ISS: 4802
 Permit#: _____



LOCATION PLAN
SCALE: N.T.S.



AERIAL VIEW
SCALE: N.T.S.

GOB RENOVATIONS PROJECT NUMBER P.001632 SCHOOL BOARD OF BROWARD COUNTY, FLORIDA

APR 18 2019
 HEERY
 Broward County Schools

DOCUMENT CONTROL
 RECEIVED/SCANNED
 JUL 16 2018
 HEERY
 Broward County Schools

RECEIVED
 MAR 06 2018
 BUILDING DEPARTMENT
 BCPS

REFERENCE CODES:
 TO COMPLY WITH
 FLORIDA BUILDING CODE 2014,
 FIFTH EDITION
 101.4.1 FUEL GAS - 101.4.2 MECHANICAL
 101.4.3 PLUMBING
 SREF 2014

THE SCHOOL BOARD OF BROWARD COUNTY MEMBERS

- 2017
- Bid Documents Only
 Not For Construction
- ABBY M. FREEDMAN, CHAIR
 - NORA RUPERT, VICE CHAIR
 - DONNA P. KORN
 - ROBIN BARTLEMAN
 - ANN MURRAY
 - PATRICIA GOOD
 - HEATHER P. BRINKWORTH
 - DR. ROSALIND OSGOOD
 - Laurie Rich Levinson
 - ROBERT W. RUNCIE, SUPERINTENDENT OF SCHOOLS

CRAIN ATLANTIS ENGINEERING INC.
 CONSULTING ENGINEERS & ARCHITECTS
 210 SW NATURA AVENUE
 DEERFIELD BEACH, FLORIDA 33441
 (954) 917-0411
 EB-27488 AA-26001858

HAMMOND & ASSOCIATES, INC.
 CONSULTING ENGINEERS
 7348 NW 5TH STREET
 PANTON, FLORIDA 33073
 TEL: (954) 327-7111 FAX: (954) 327-7154
 MICHAEL J. HAMMOND, P.E.
 MECHANICAL / ELECTRICAL ENGINEER
 #3902

NOTE:
 ALL DIMENSIONS AND EXACT LOCATION OF ALL EXISTING EQUIPMENT AND ASSOCIATED PARTS AND ACCESSORIES ARE TO BE FIELD VERIFIED BY THE CONTRACTOR.

GENERAL CONTRACTOR SHALL VERIFY SCOPE OF WORK PRIOR TO COMMENCEMENT OF THE WORK. GC SHALL NOTIFY IN WRITING THE SBBC PROJECT MANAGER AND ARCHITECT OF RECORD OF ANY DISCREPANCIES, ERRORS, OR CONTRADICTIONS FOUND IN THE SCOPE OF WORK, EXTENUATING CIRCUMSTANCES, OR ANY CONDITIONS PREVENTING THE ORDERLY EXECUTION OF THE SCOPE OF WORK INCLUDING, BUT NOT LIMITED TO THE FOLLOWING: ACCESS TO AREAS OF WORK, SEVERE WEATHER CONDITIONS, WORK STRIKES, SCOPE ITEMS ALREADY PERFORMED BY OTHERS, CIVIL DISTURBANCES, LOCAL POWER OUTAGES, ACTS OF GOD, ETC.

100% CONSTRUCTION DOCUMENTS - PHASE V
 12-13-2017

CRAIN ATLANTIS ENGINEERING, INC.
 CONSULTING ENGINEERS & ARCHITECTS
 210 SW NATURA AVENUE
 DEERFIELD BEACH, FLORIDA 33441
 A 20091808 ES - 27488

REVISIONS

02/23/2018	BUILDING DEPARTMENT COMMENTS
A	

SEA CASTLE ELEMENTARY SCHOOL
 9600 MIRAMAR BOULEVARD
 MIRAMAR, FLORIDA 33025

THE SCHOOL BOARD OF BROWARD COUNTY

TITLE SHEET

100% CONSTRUCTION DOCUMENTS
 SBBC PROJECT: P.001632
 DATE: 12/13/2017
 SCALE: AS SHOWN
 DRAWN BY: C.A.E.
 CHECKED BY: A.O./R.P.
 C.A.E. PROJECT NO. 2016.55

STATE OF FLORIDA
 CHARLES CEPEDA
 REGISTERED ARCHITECT
 2-26-18
 AR # 94196

DRAWING No. **T-1.0**

IT IS A VIOLATION OF THE LAW FOR ANY PERSON, UNLESS ACTING UNDER THE DIRECTION OF A LICENSED ARCHITECT, TO ALTER THESE PLANS AND SPECIFICATIONS. THIS DOCUMENT CONTAINS PROPRIETARY INFORMATION AND SHALL NOT BE USED OR REPRODUCED OR ITS CONTENTS DISCLOSED, IN WHOLE OR IN PART, WITHOUT THE PRIOR WRITTEN CONSENT OF CRAIN ATLANTIS ENGINEERING, INC. COPYRIGHT 2017 CRAIN ATLANTIS ENGINEERING, INC.