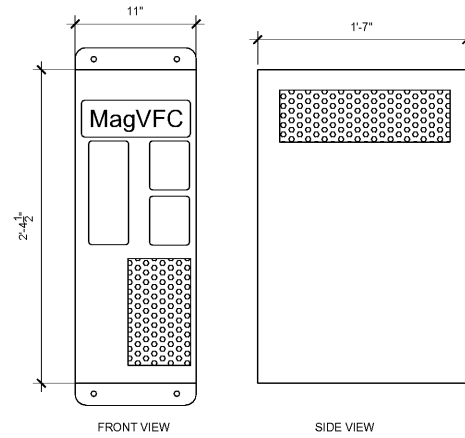
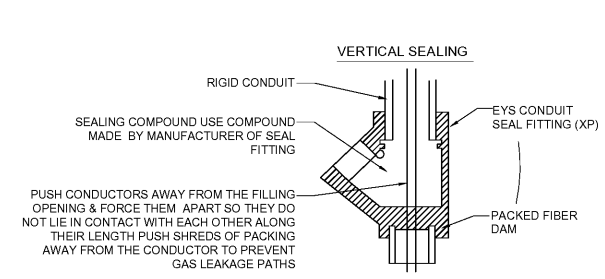


Order Plans @



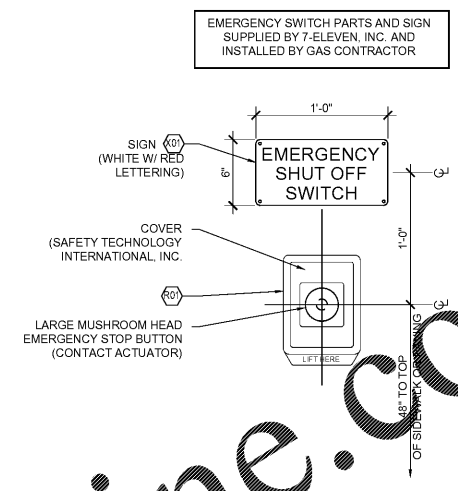
FE PETRO MAGVFC - VARIABLE FREQUENCY CONTROLLER. SEE MANUAL FOR WIRING INSTRUCTIONS.

4 MAG VFC DETAILS
NTS

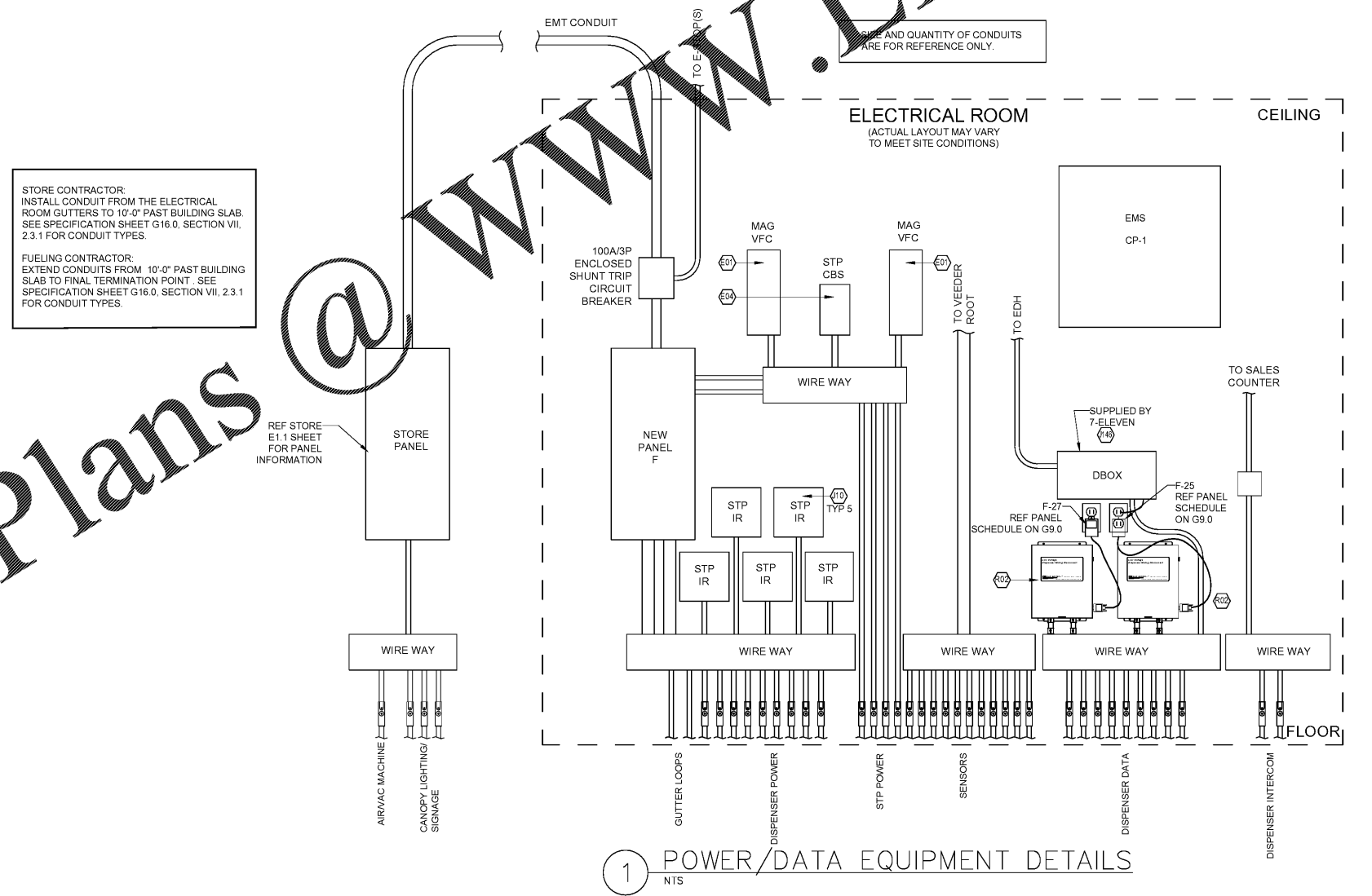


NOTE:
PROVIDE EXPLOSION PROOF SEALS. IN ACCORDANCE WITH ARTICLE 501, CLASS 1, DIVISION 2 OF THE LATEST NATIONAL ELECTRICAL CODE TYPICAL FOR ALL UNDERGROUND CONDUIT STUB-UPS INTO EQUIPMENT
SEAL OFF ALL CONDUIT ENTERING OR LEAVING CAVITIES OR ENCLOSURES OF DISPENSERS AND ASSOCIATED EQUIPMENT. IN ADDITION, ALL CONDUITS COMING FROM THE BUILDING THROUGH A HAZARDOUS LOCATION ALSO REQUIRE SEAL-OFFS AT BOTH ENDS.

3 SEAL FITTING INSTALLATION
NTS



2 EMERGENCY SHUT OFF W/ COVER
NTS



1 POWER/DATA EQUIPMENT DETAILS
NTS

Job#:	SEI-26848
Scale:	AS NOTED
Date:	05/06/19
Drawn By:	RMK
Checked By:	KMS

DESCRIPTION	
Rev. #	
Date	
Proto 11-05-18	
7-ELEVEN, INC. 3200 HACKBERRY ROAD, IRVING TEXAS 75063	
7-ELEVEN #38777 US 301 & FORT HAMER ROAD PARRISH, FL 34219	
MISCELLANEOUS ELECTRICAL DETAILS	

Job#:	SEI-26848
Scale:	AS NOTED
Date:	05/06/19
Drawn By:	RMK
Checked By:	KMS

Documents prepared by Core States Group are to be used only for the specific project and no other projects, by owner or any other party, without the consent of Core States Group. Core States Group is not responsible for the user's own risk. If used in a hazardous location, the user is advised to consult with a qualified electrical contractor. Core States Group will hold no liability for claims and losses.

Job#: SEI-26848
Scale: AS NOTED
Date: 05/06/19
Drawn By: RMK
Checked By: KMS

PRELIMINARY DRAWINGS
FOR YOUR INFORMATION
NOT FOR CONSTRUCTION

SHEET:
G10.0
FUELING - USA